



THE DIANA

1800s Romanesque/Victorian

Mary Connor Kitchens
DES 482 Advanced Interior Design II
Professor Meirav Goldhour
Senior Capstone May 2022

RESEARCH

The Victorian Period (the early 1800s to early 1900s) is home to architecture that is a combination of Gothic Revival, Italianate, Second Empire, Queen Anne, Stick Style, Romanesque style, and Shingle Style.

This was also the time of the Industrial Revolution, political reform, and social reform. Queen Victoria also took the throne in 1837 at age 18 and was queen until her death in 1901. Also, during this period, the British nation had a powerful government, a growing state, and an expanding empire.

SITE LOCATION

Scrabble Road, Bagdad, KY 40003 - Shelby County
Lot 23 with 12 acres
Backbone Creek directly behind the property line



INSPIRATION PHOTOS



BUILDING NOTES

- i. Occupancy Classification: R-3
- ii. Occupancy Load Factor: 200 Gross
- iii. Construction Type 4 (mill construction)
- iv. Historic Building: Level 2 Alteration
- vii. Not on National Historic Registrar
- viii. Located in Tornado Alley

EXISTING ELEVATION



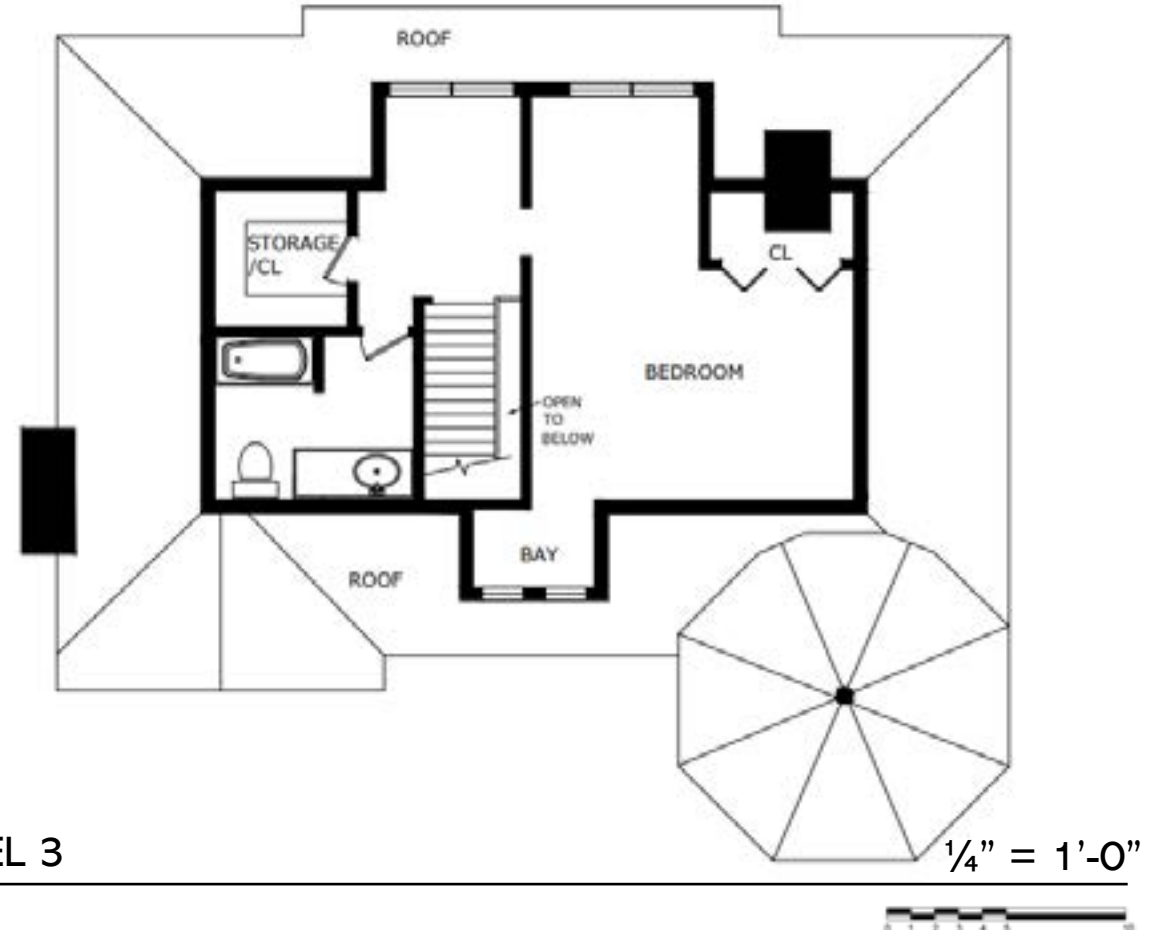
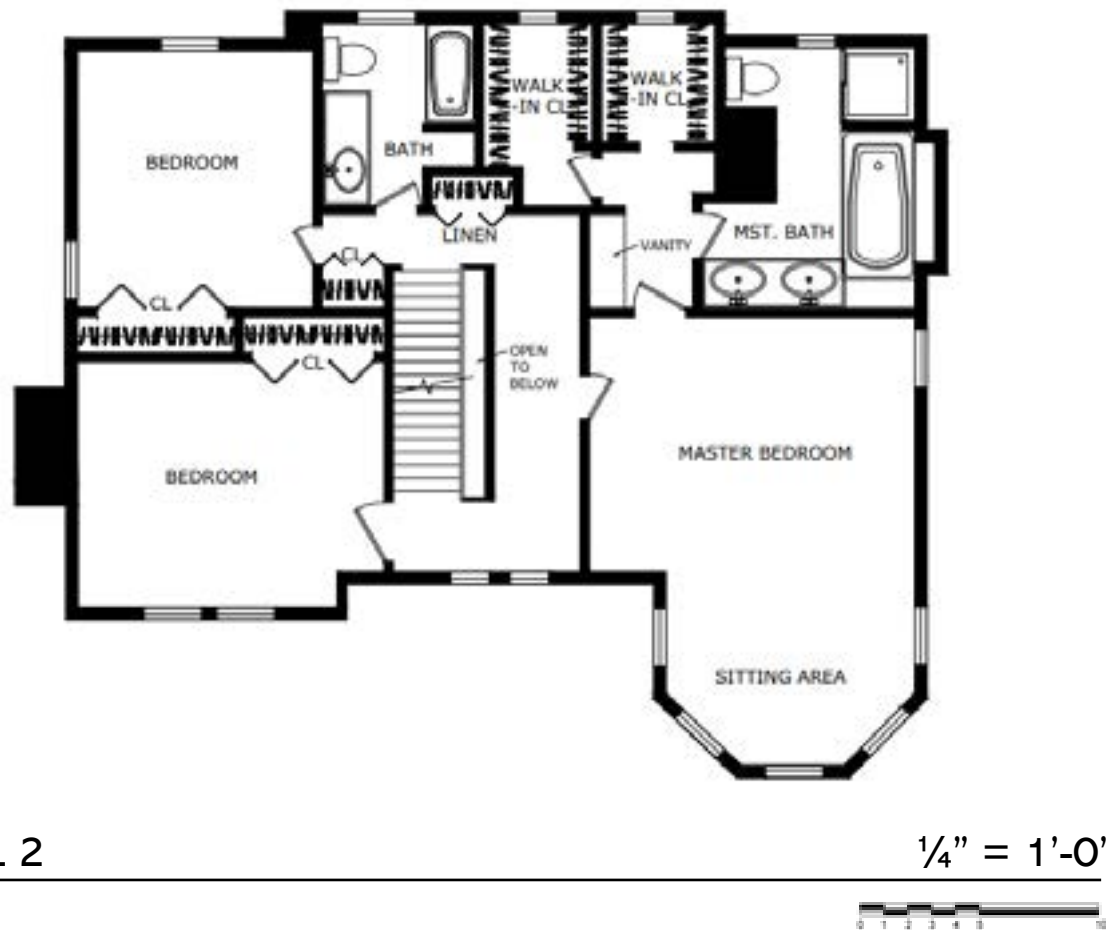
PARTIAL COLOR SCHEME



ORIGINAL FLOOR PLANS

General Notes

- Excess of closets
- Excess of doors/doorways
- Odd shaped 3rd story bay
- Some doorways not to code



CONCEPT STATEMENT

The Diana is a three-story Victorian/Romanesque house built in the 1800s. Its stunning architecture embodies two bays with floor-to-ceiling windows accompanied by a bell roof and verandas found on the front and rear of the house. The historical home concept is to overall keep as much of the historical integrity as possible. Therefore, the two fireplaces will remain in their place, the floors will contain the original oak aside from the bathrooms, there will be archways leading into the kitchen, and minimal recessed lighting. However, unnecessary closets and hallways will be demolished to create a more open floor plan. To enhance its historical features, the design for the space will be based on the 1930s-1960s interior designer, Dorothy Draper. Her work encompasses bold and vibrant textures, colors, and patterns. The bedrooms will be more muted, but the main areas of the space will capture the bold eccentricities of Draper's work. For lighting, ornate, bronze chandeliers will be chosen. Furthermore, there is no direct color scheme, as this style embodies all, but variations of blue will be used to tie each room together for a cohesive flow.



CRITERIA MATRIX & PROGRAMMING

Primary Spaces

- parlor
- drawing room
- master bed
- kitchen
- dining
- pantry

Secondary Spaces

- bedroom 2
- bedroom 3
- laundry
- multipurpose room
- bathrooms
- master closet

Criteria Matrix THE DIANA	Criteria Matrix							Additional Comments	Accessibility Features
	BD Footage Area	Adaptability	High Traffic Area	Design/Interior Style	Equipment Features	Special Considerations	Accessibility Features		
(1) Main Entry	32 sq. ft.	3,4,5	Y	H	M		Part of Foyer		
(2) Rear Entry	26 sq. ft.	4,7,8,9	M	H	N		Near Kitchen w/ Fireplace		
(3) Parlor	231 sq. ft.	1,5,6,9	Y	H	M		Bay Windows	Dimmable LED Lighting Wood-Burning Fireplace	
(4) Drawing Room	298 sq. ft.	1,5,7,8	Y	H	N		Fireplace	Dimmable LED Lighting	
(5) Powder Bath	32 sq. ft.	2,3,4,6,7,8,9	M	N	Y				
(6) Laundry Room	80 sq. ft.	1,2,3,5,6,9	L	L	Y				
(7) Dining Room	157 sq. ft.	2,4,5,9	Y	H	M		Set of Double Doors to outside	Dimmable LED Lighting	
(8) Kitchen	266 sq. ft.	2,4,5,8	Y	M	Y			Dimmable LED Lighting	
(9) Pantry	72 sq. ft.	2,3,8,9,9	L	L	N				
(10) Master Bedroom	326 sq. ft.	11,12	L	H	N		Bay Windows	Dimmable LED Lighting	
(11) Master Bathroom	182 sq. ft.	10,12	L	L	Y		Separate Vanity included (7'x6')		
(12) Master Closet	106 sq. ft.	10,11	L	L	N		Two walk-ins		
(13) Bedroom #1	208 sq. ft.	14,15	L	M	H			Dimmable LED Lighting	
(14) Bedroom #2	185 sq. ft.	13,15	L	M	M			Dimmable LED Lighting	
(15) Bathroom #1	72 sq. ft.	13,16	L	L	Y				
(16) Multipurpose Room	263 sq. ft.	17	M	H	Y		Added feature	Dimmable LED Lighting	
(17) Bedroom #2	66 sq. ft.	16	M	L	Y				

LEGEND

H HIGH
M MEDIUM
L LOW

Y YES
N NO

● PRIMARY
◐ SECONDARY
◑ REASONABLY CONVENIENT
○ Not Applicable

FIRST FLOOR

SECOND FLOOR

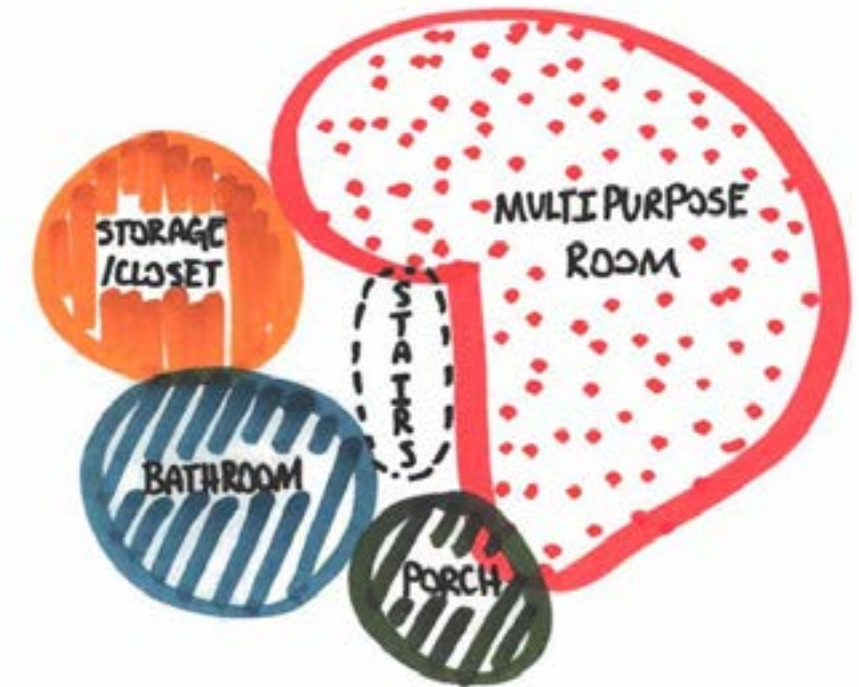
THIRD FLOOR



LEVEL 1

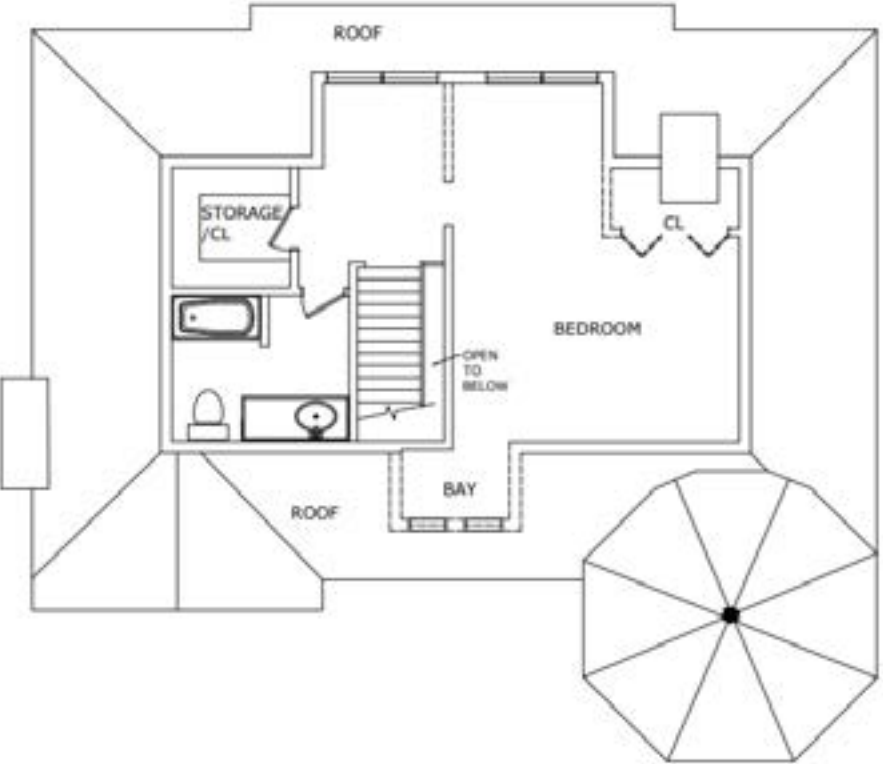
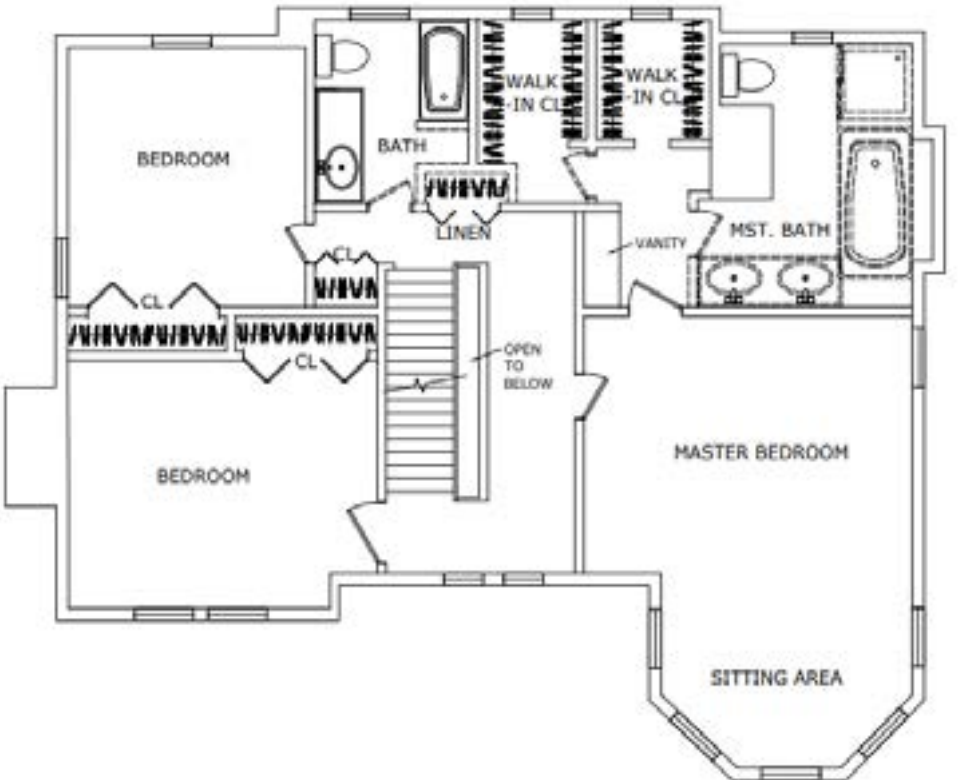
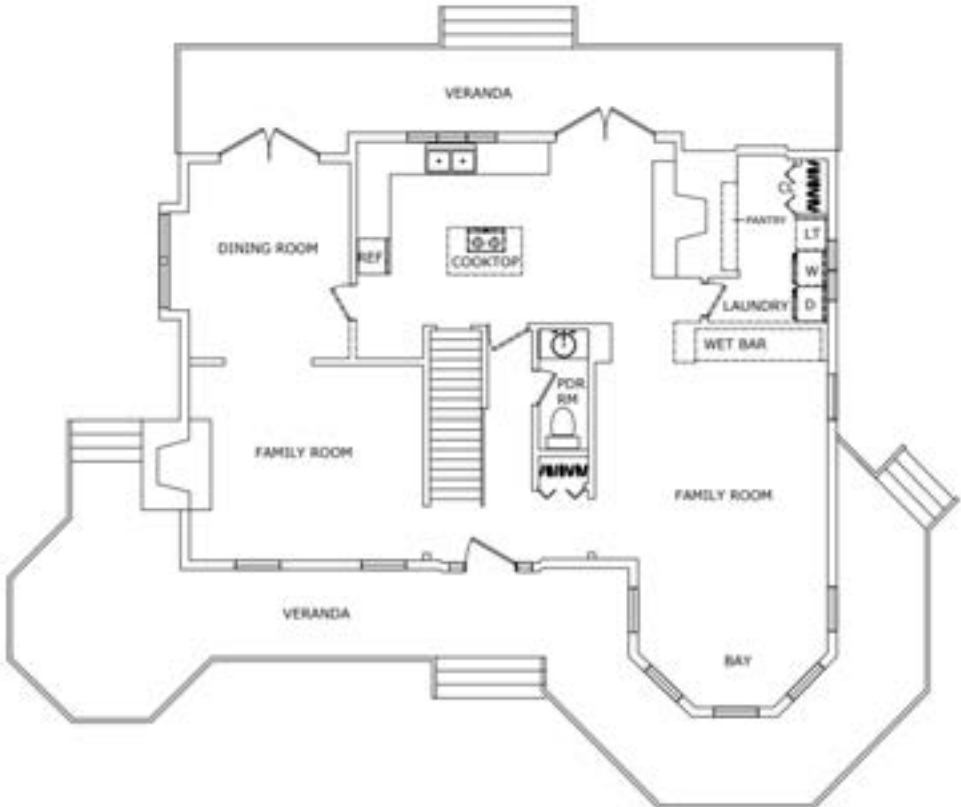


LEVEL 2



LEVEL 3

DEMO PLANS



General Notes

- Removing unnecessary doorways
- Removing wet bar
- Moving laundry
- Making doorways up to code

General Notes

- Removing unnecessary doorways
- Reconfiguring bathroom
- Removing unnecessary closets
- Making doorways up to code

General Notes

- Removing unnecessary walls – nonloadbearing
- Removing unnecessary closet space
- Closing off bay and making porch



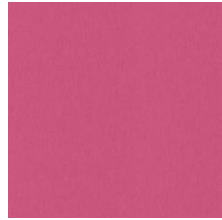
NEW BUILD LEVEL 1



FABRICUT
Cobleskill, Cabernet



THIBAUT
Chamomile T14314



FABRICUT
Artisan, Magenta



RUGGABLE
Watercolor Floral Rug

General Notes

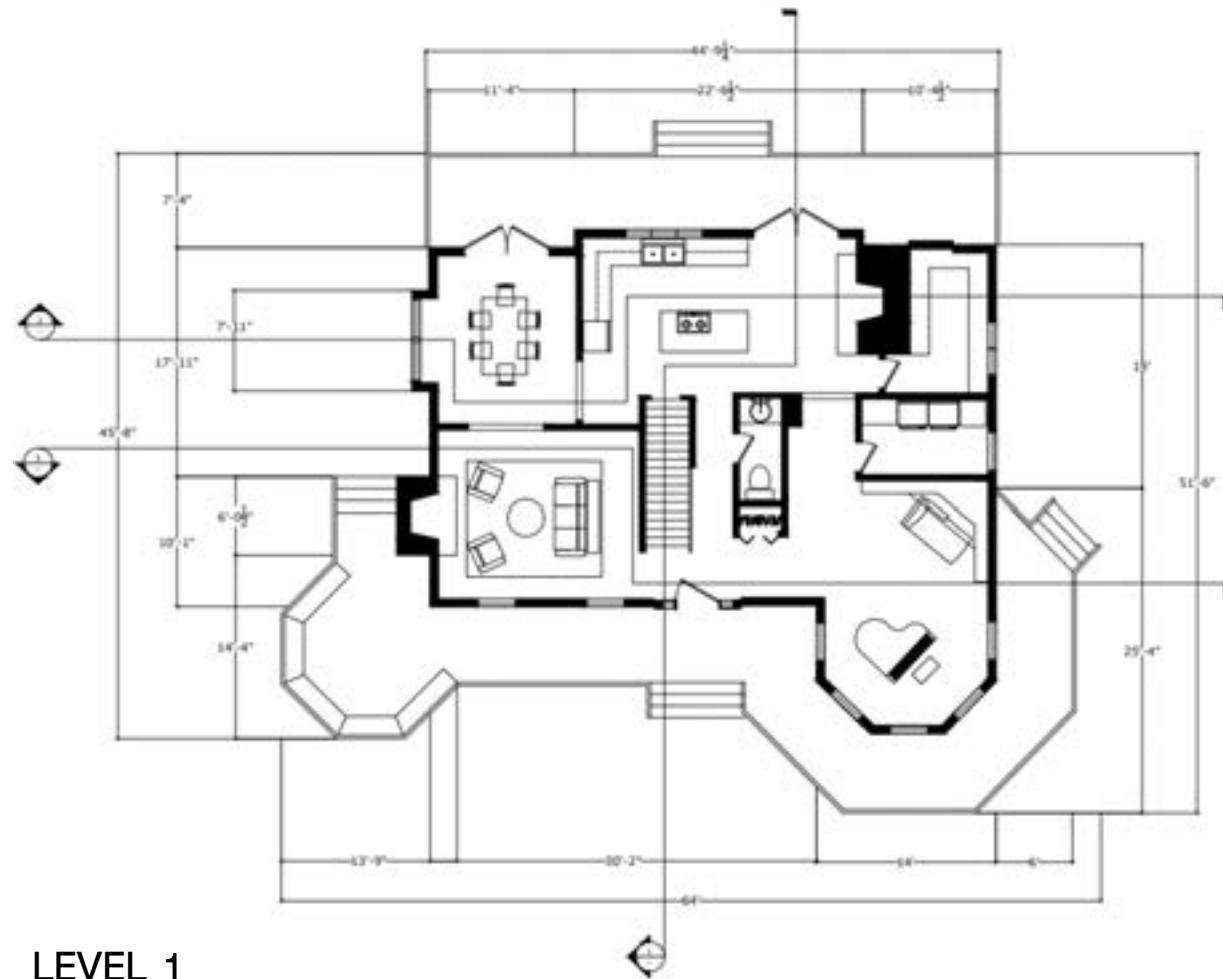
- Moved and extended kitchen island
- Created new laundry room
- Created a walk-in pantry
- Doors and doorways are up to code
- Archways created to divide space without the use of doors



LEVEL 1

1/4" = 1'-0"

LEVEL 1 DIMENSIONED PLAN

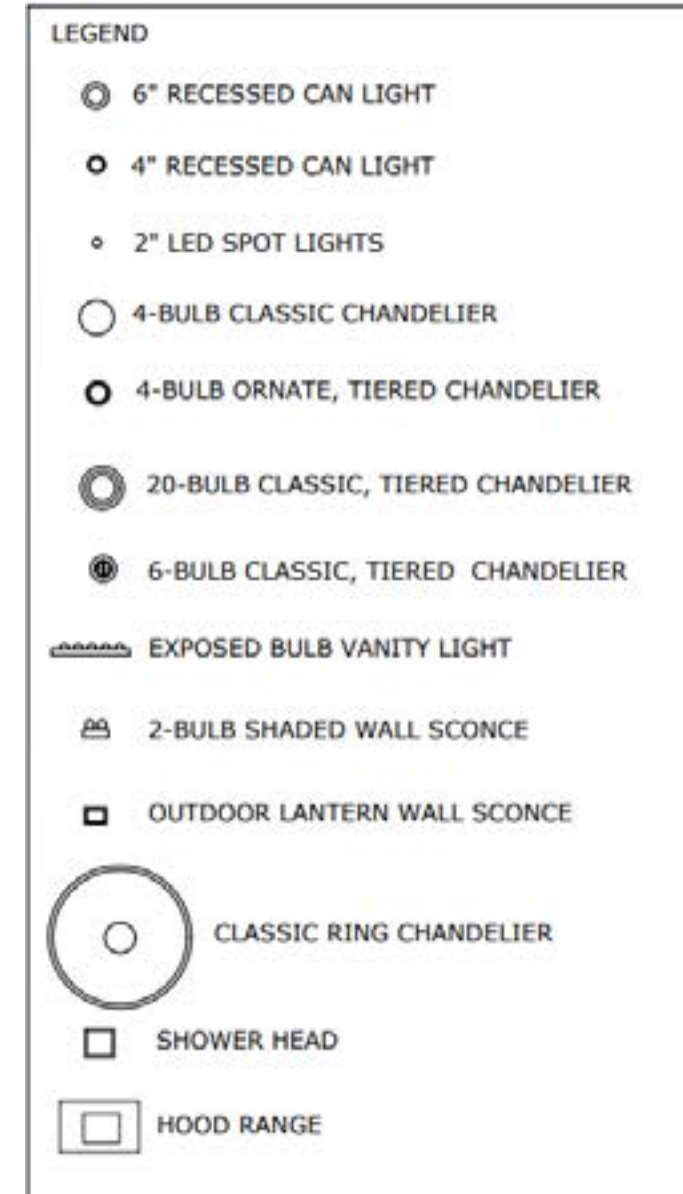
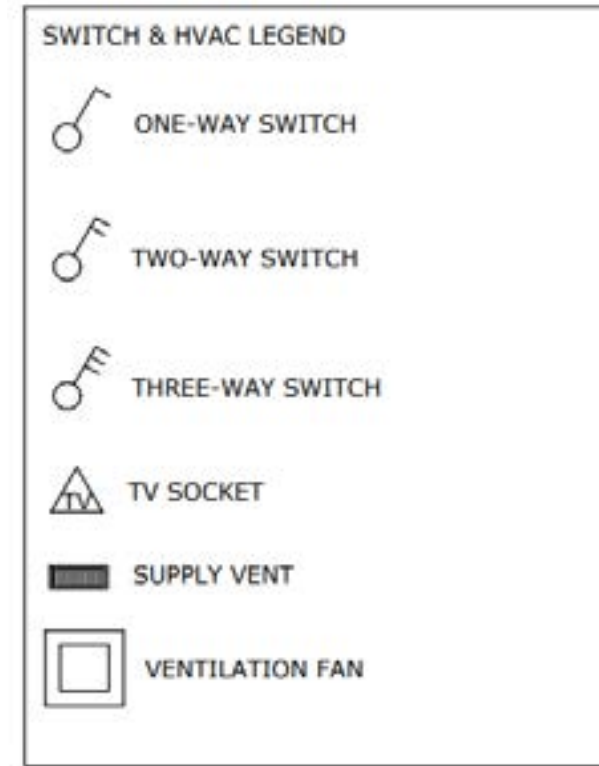
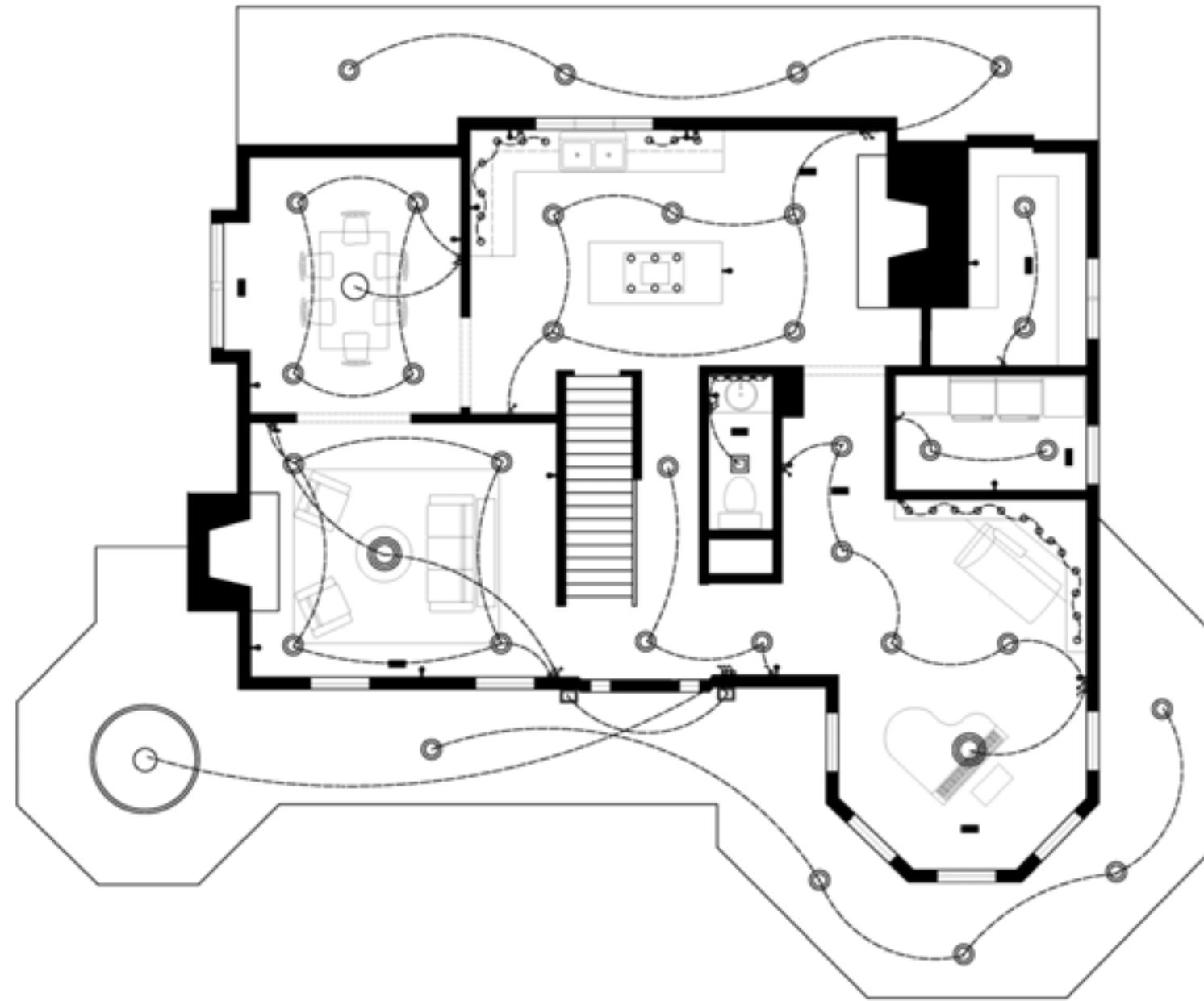


LEVEL 1

1/4" = 1'-0"



REFLECTED CEILING PLAN – LEVEL 1













LEVEL 1

1/4" = 1'-0"

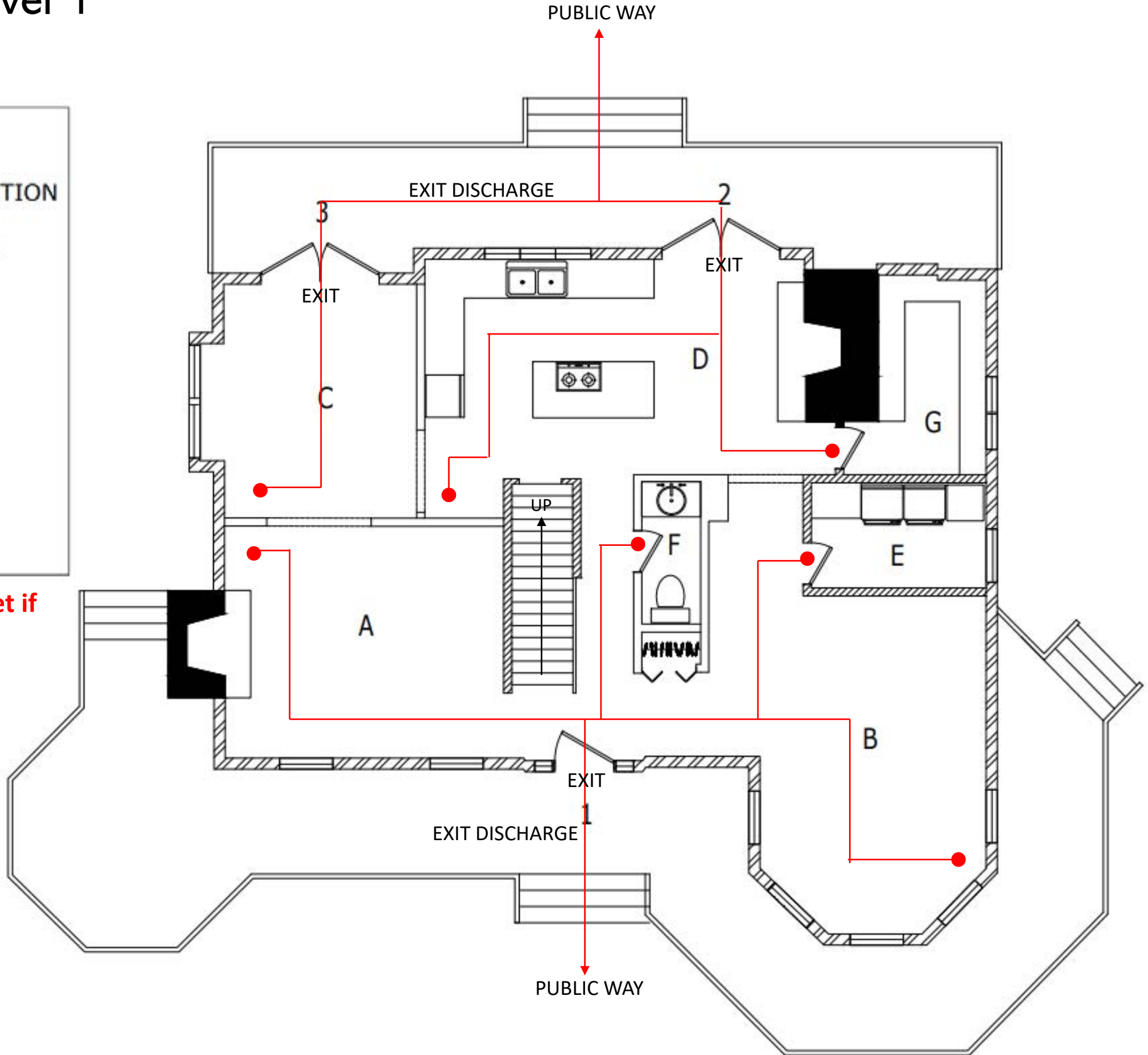


LIFE SAFETY PLAN – Level 1

LEGEND

-  1-HR RATING FIRE PARTITION
-  2-HR RATING FIRE WALL
-  PATH OF EGRESS
-  A1 - 24'2"
-  B1 - 24'1"
-  C3 - 14'0"
-  D2 - 21'7"
-  E1 - 25'5"
-  F1 - 16'3"
-  G2 - 29'5"

Max of egress travel is 75 feet; 30 feet if two options for egress.

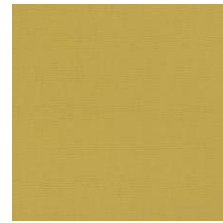


LEVEL 1

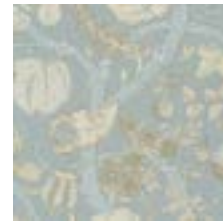
1/4" = 1'-0"



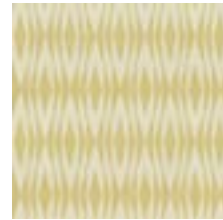
NEW BUILD LEVEL 2



FABRICUT
Wrangler, Dandelion



THIBAUT
Macbeth T72623

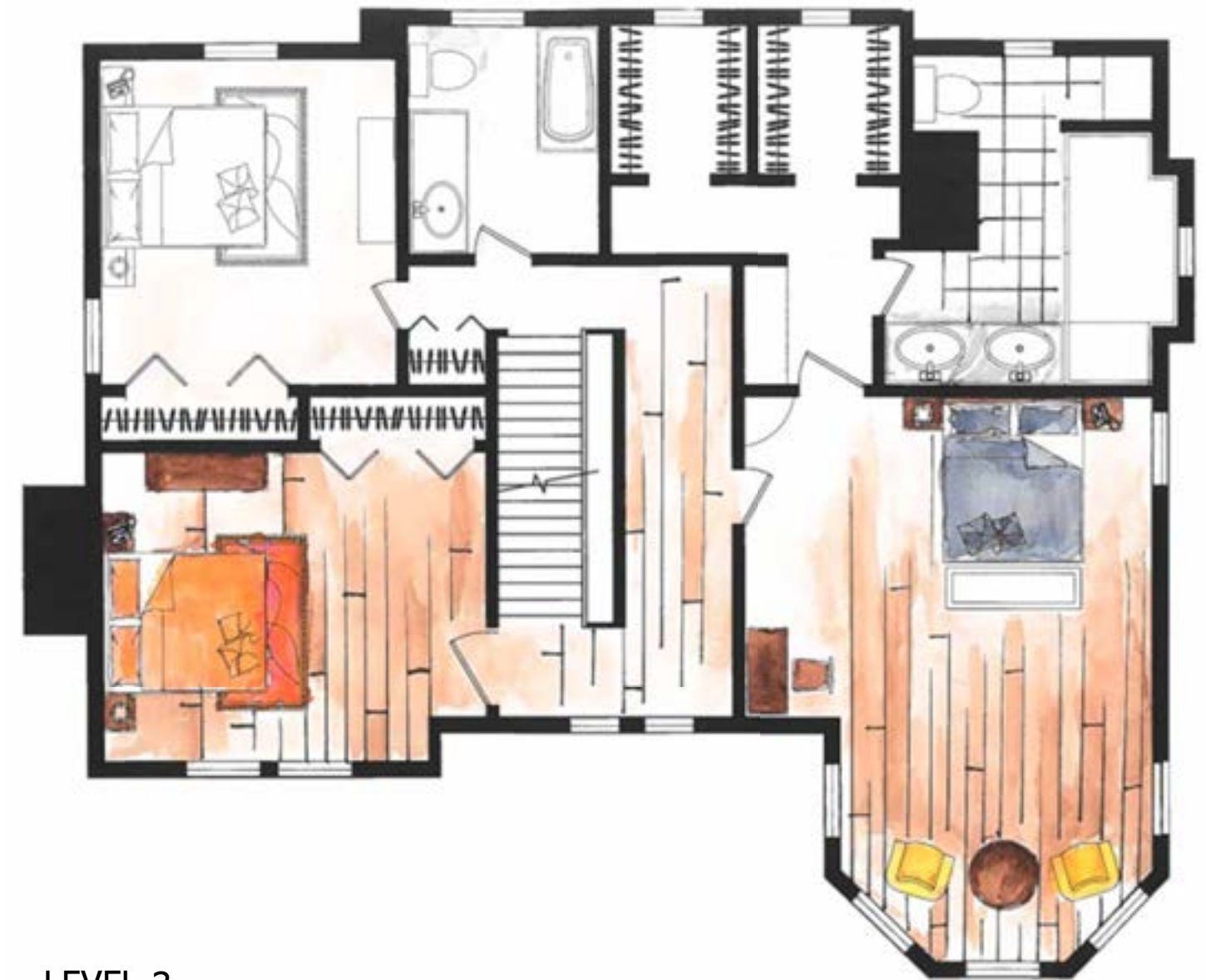


FABRICUT
El Camino, Jasmine



English Style Traditional
Wingback Chair
Chairish

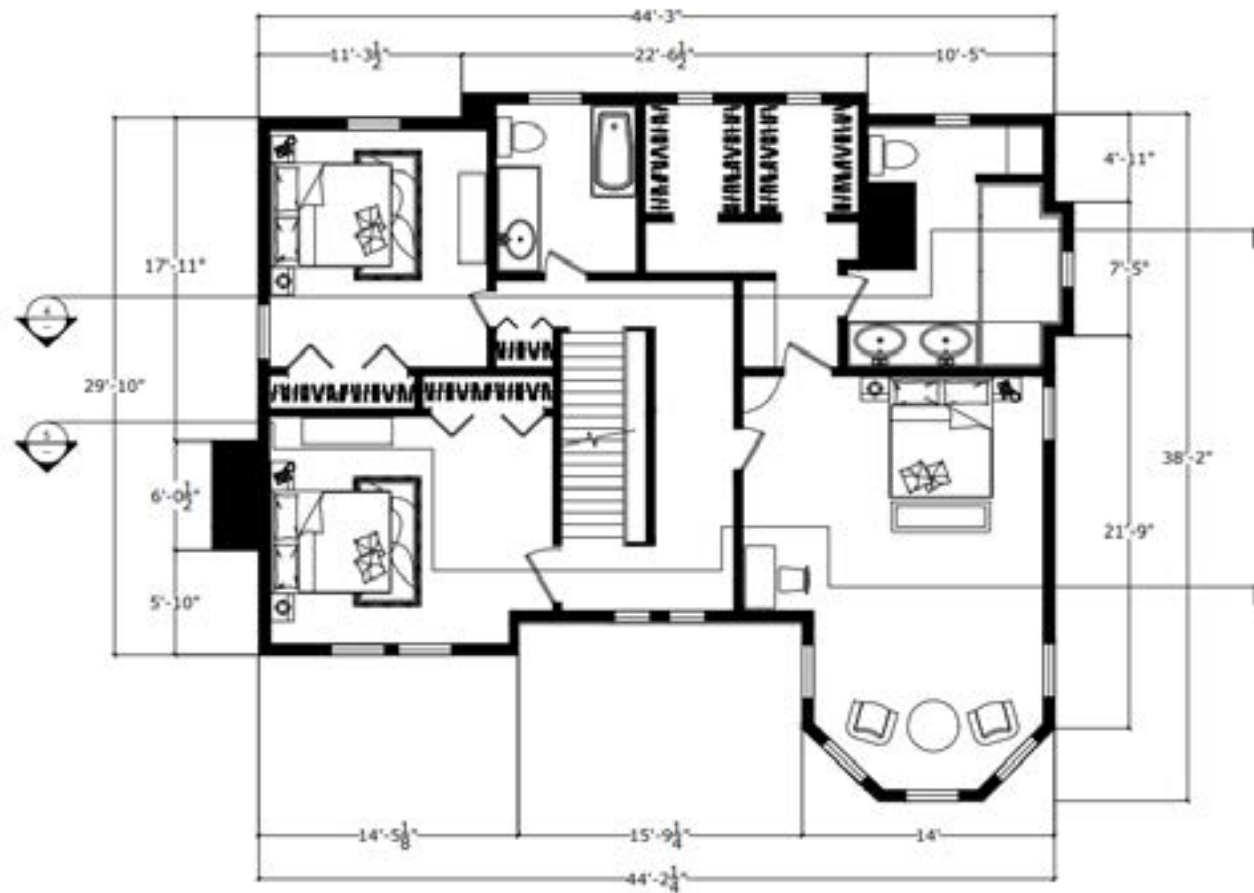
- General Notes**
- Removed linen closet and extended bathroom
 - Extended shower in master bath with storage tower – bathtub removed
 - New window added to master bath
 - Doors and doorways are up to code
 - Walk-in closets are made similar – removed extra feet



LEVEL 2

1/4" = 1'-0" 0 1 2 3 4 5 10

LEVEL 2 DIMENSIONED PLAN

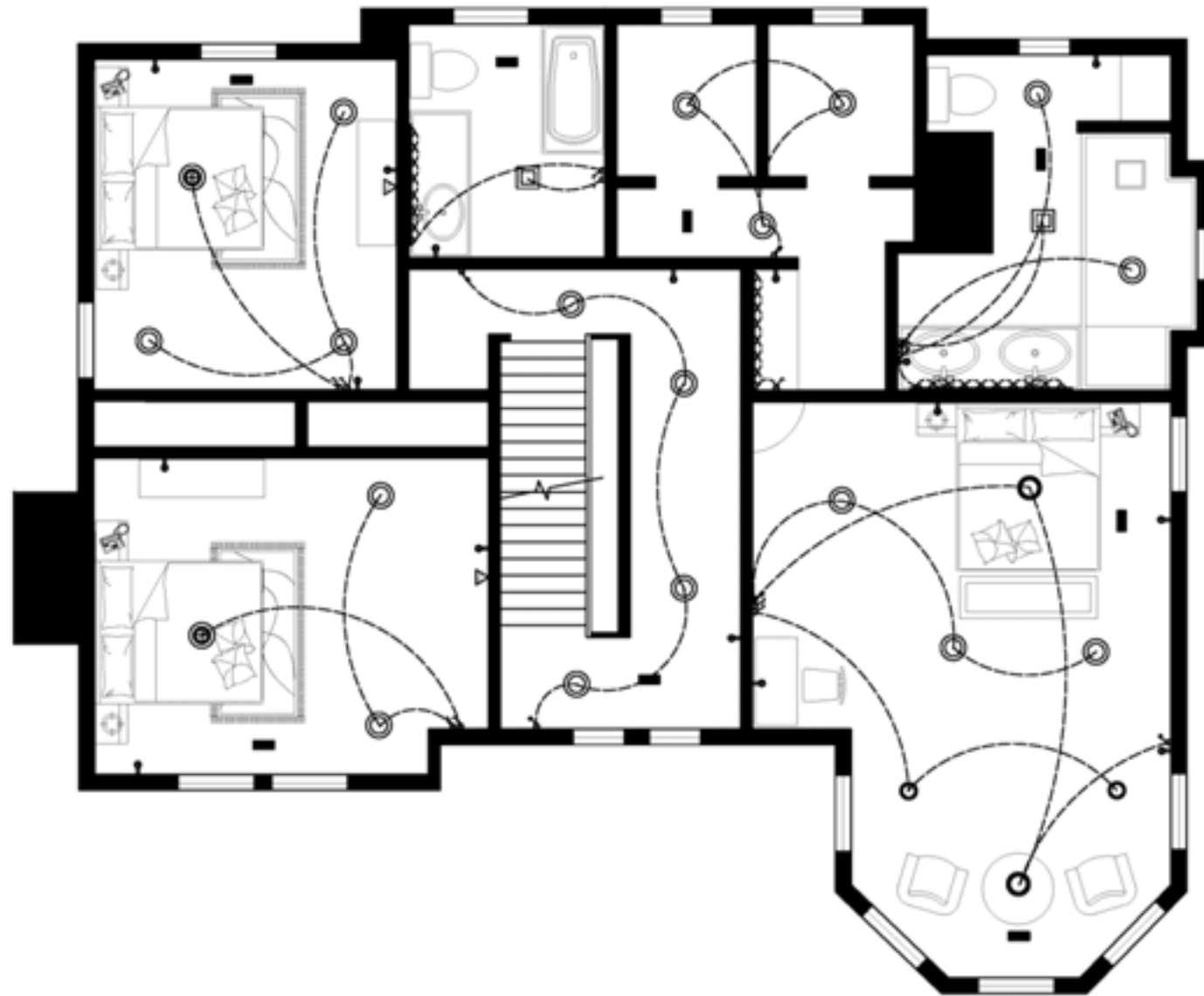


LEVEL 2







1/4" = 1'-0" 0 1 2 3 4 5 10
















REFLECTED CEILING PLAN – LEVEL 2



SWITCH & HVAC LEGEND

-  ONE-WAY SWITCH
-  TWO-WAY SWITCH
-  THREE-WAY SWITCH
-  TV SOCKET
-  SUPPLY VENT
-  VENTILATION FAN

LEGEND

-  6" RECESSED CAN LIGHT
-  4" RECESSED CAN LIGHT
-  2" LED SPOT LIGHTS
-  4-BULB CLASSIC CHANDELIER
-  4-BULB ORNATE, TIERED CHANDELIER
-  20-BULB CLASSIC, TIERED CHANDELIER
-  6-BULB CLASSIC, TIERED CHANDELIER
-  EXPOSED BULB VANITY LIGHT
-  2-BULB SHADED WALL SCONCE
-  OUTDOOR LANTERN WALL SCONCE
-  CLASSIC RING CHANDELIER
-  SHOWER HEAD
-  HOOD RANGE










LEVEL 2

1/4" = 1'-0"

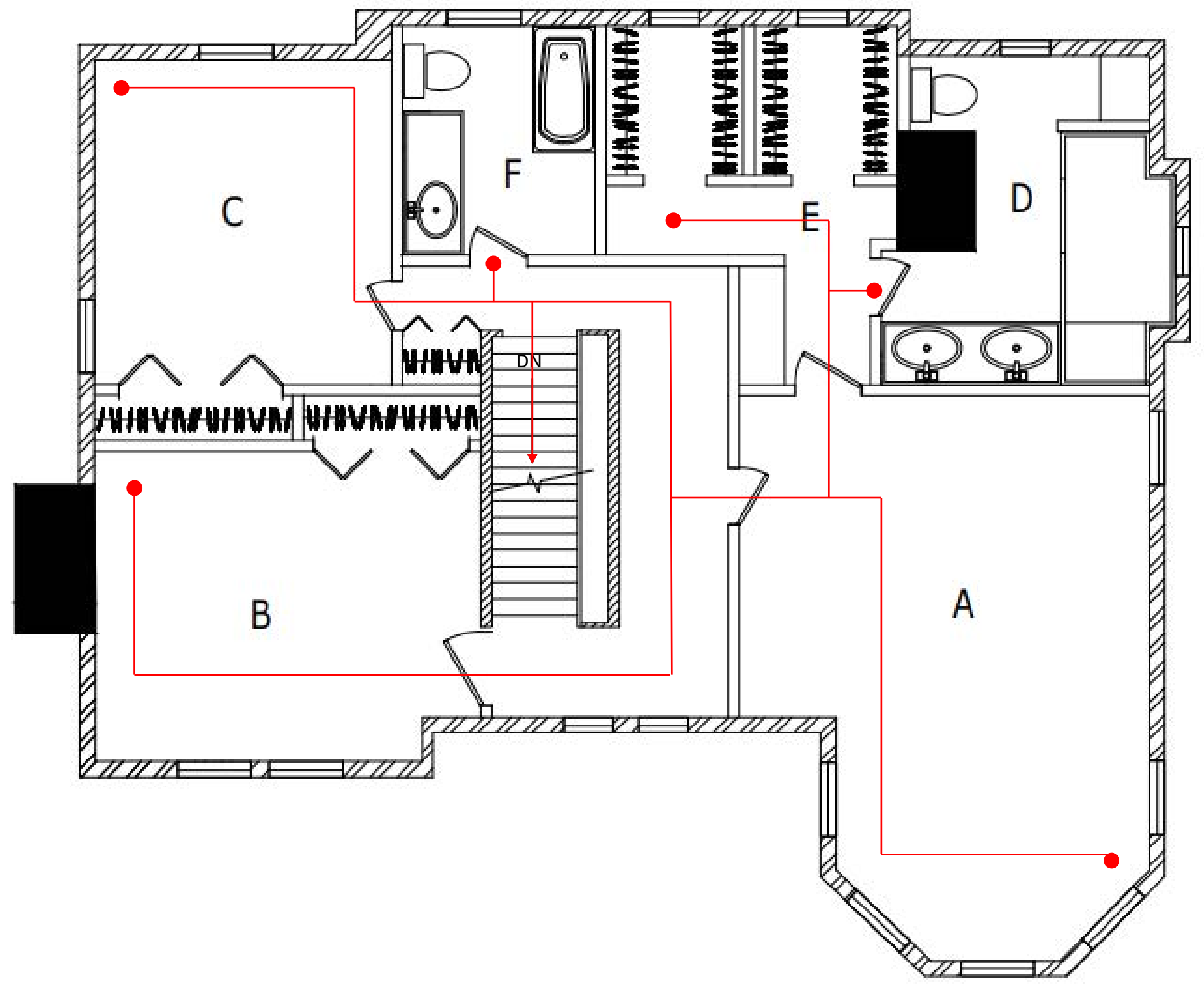


LIFE SAFETY PLAN – Level 2

LEGEND

-  1-HR RATING FIRE PARTITION
-  2-HR RATING FIRE WALL
-  PATH OF EGRESS
-  A1 - 48'3"
-  B1 - 56'6"
-  C1 - 34'8"
-  D1 - 61'11"
-  E1 - 51'6"
-  F1 - 27'6"

Max of egress travel is 75 feet; 30 feet if two options for egress.



LEVEL2

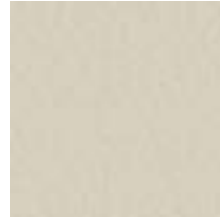
1/4" = 1'-0"



NEW BUILD LEVEL 3



THIBAUT
Windsor T14301



FABRICUT
Jamestown, Putty



**Henley Tufted L-Shaped
Corner Sectional**
Pottery Barn



FLOOR & DÉCOR
Red Oak Wire-Brushed

General Notes

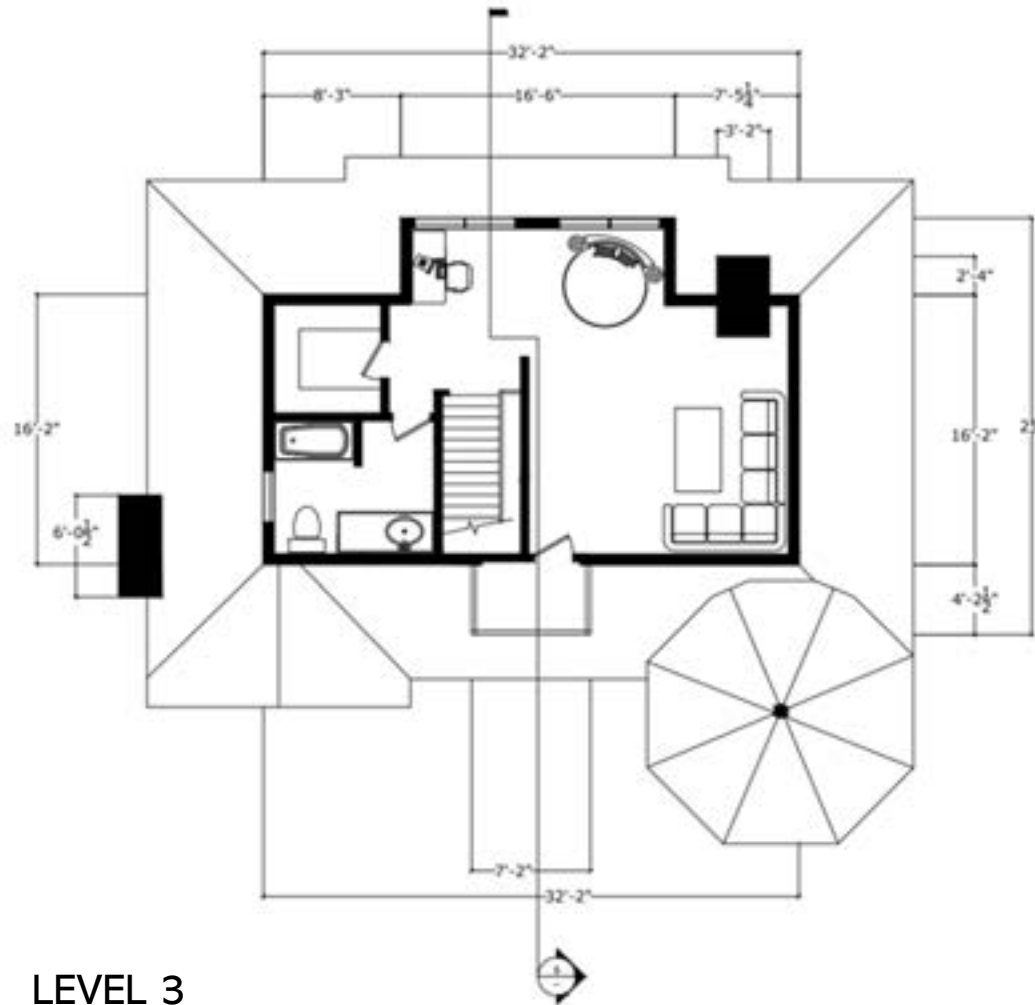
- Removed excess nonloadbearing walls in multipurpose room
- Bay is closed off and now an outdoor porch
- Doors and doorways are up to code
- New window added to bathroom



LEVEL 3

1/4" = 1'-0"

LEVEL 3 DIMENSIONED PLAN

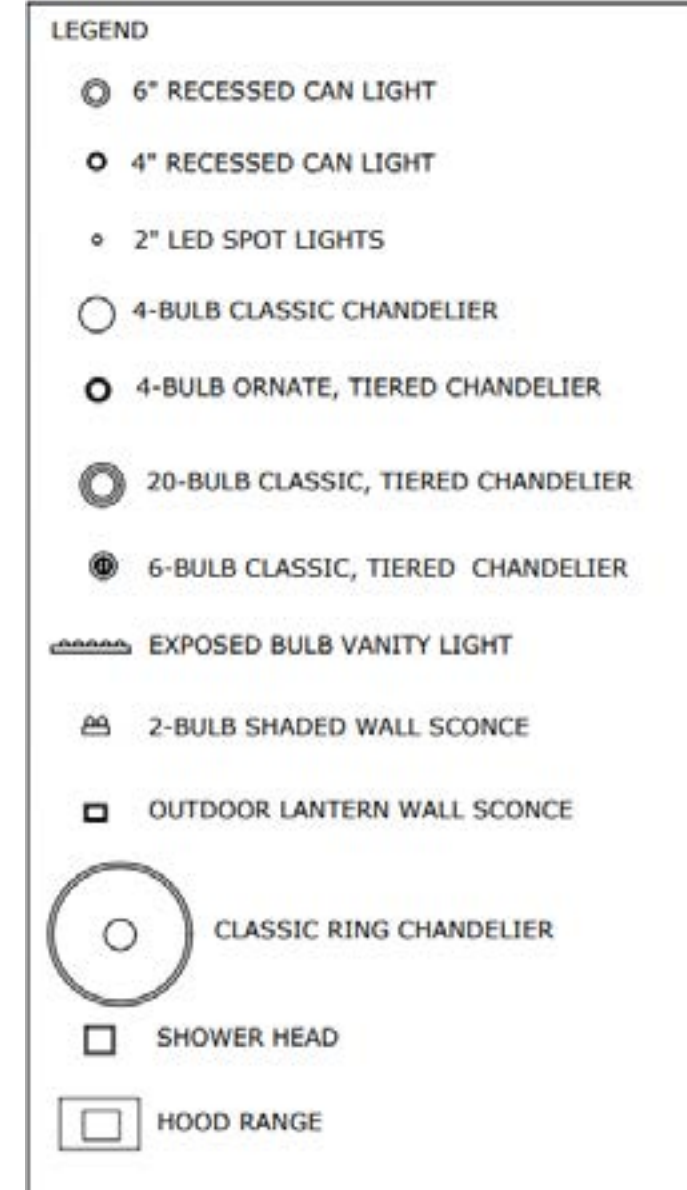
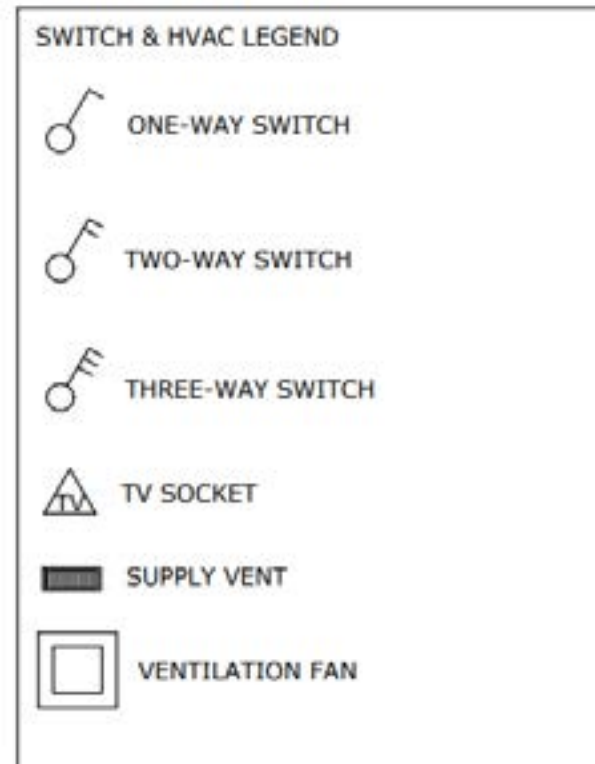
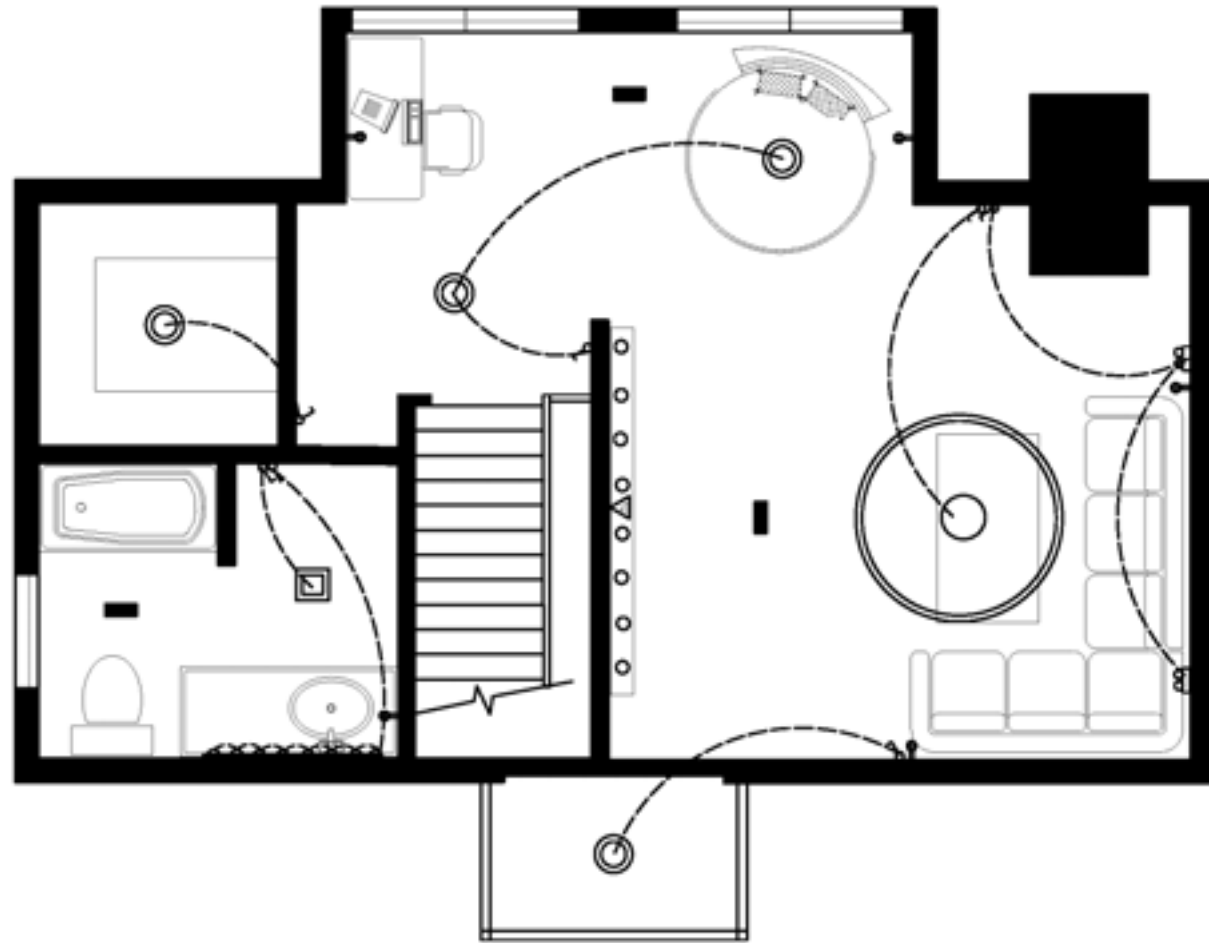


LEVEL 3

1/4" = 1'-0"



REFLECTED CEILING PLAN – LEVEL 3








LEVEL 3

1/4" = 1'-0"

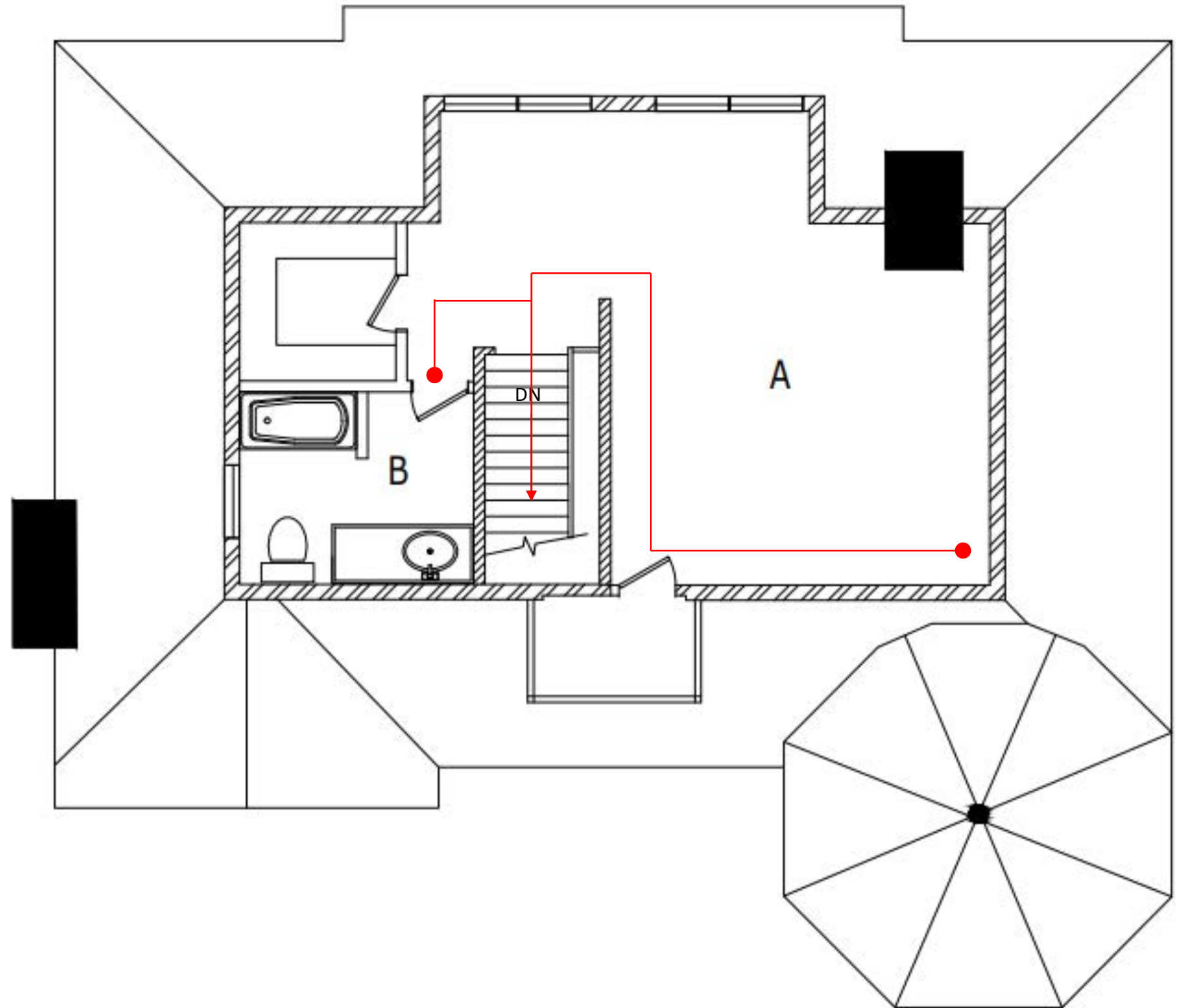


LIFE SAFETY PLAN – Level 3

LEGEND

-  1-HR RATING FIRE PARTITION
-  2-HR RATING FIRE WALL
-  PATH OF EGRESS
-  A1 - 50'4"
-  B1 - 43'2"

Max of egress travel is 75 feet; 30 feet if two options for egress.



LEVEL 3

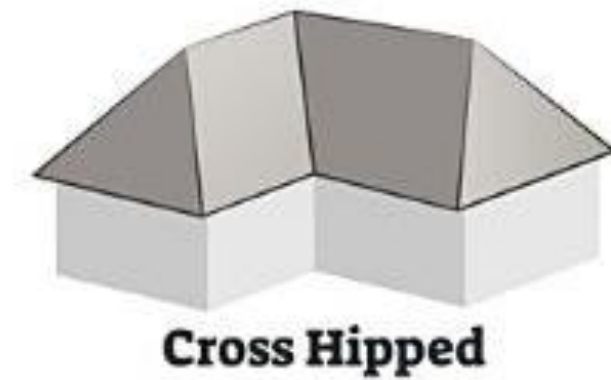
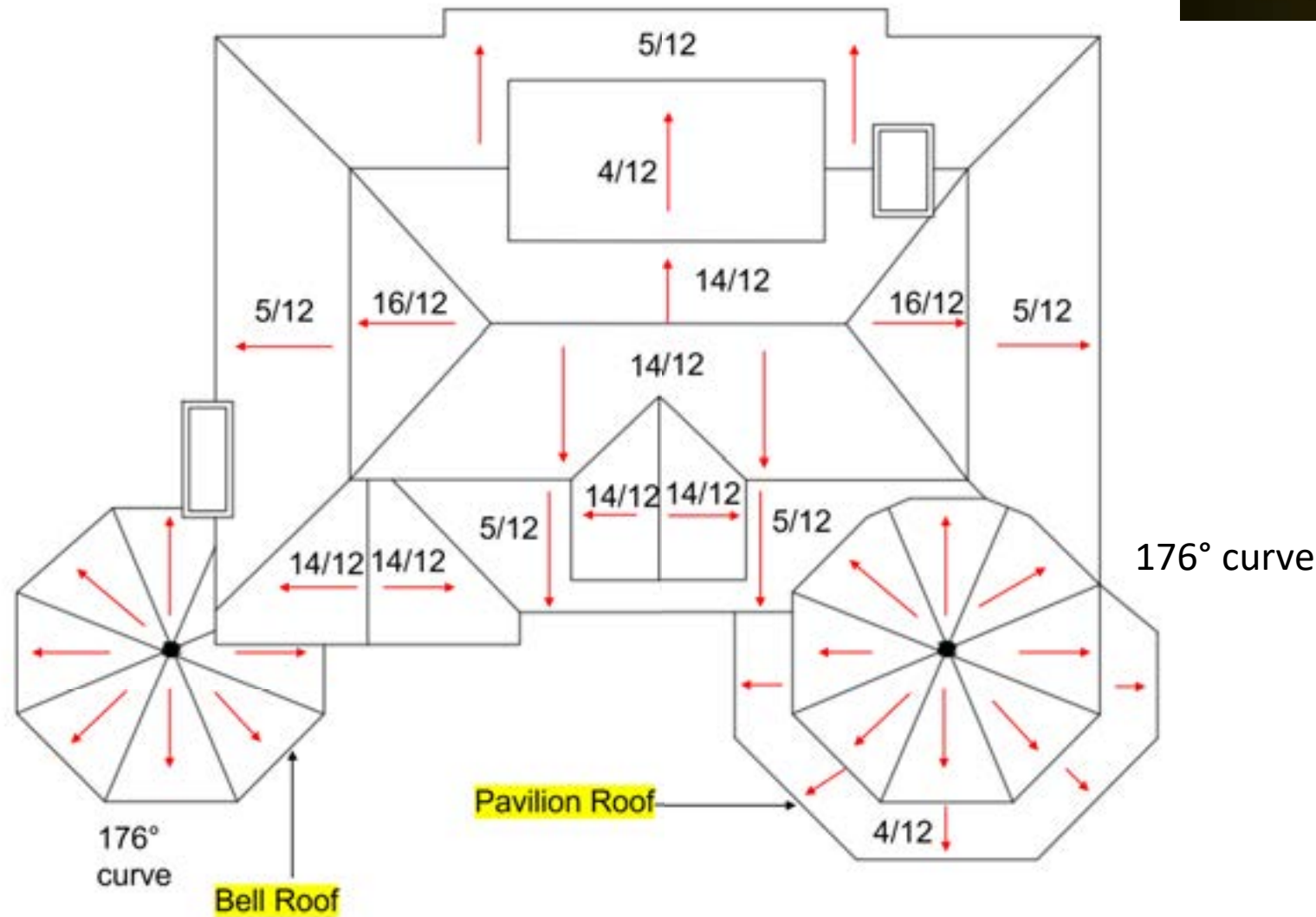
1/4" = 1'-0"



ROOF PLAN

General Notes

- Mainly a cross-hipped roof
- Has a dormer roof
- Pavilion roof
- Bell roof



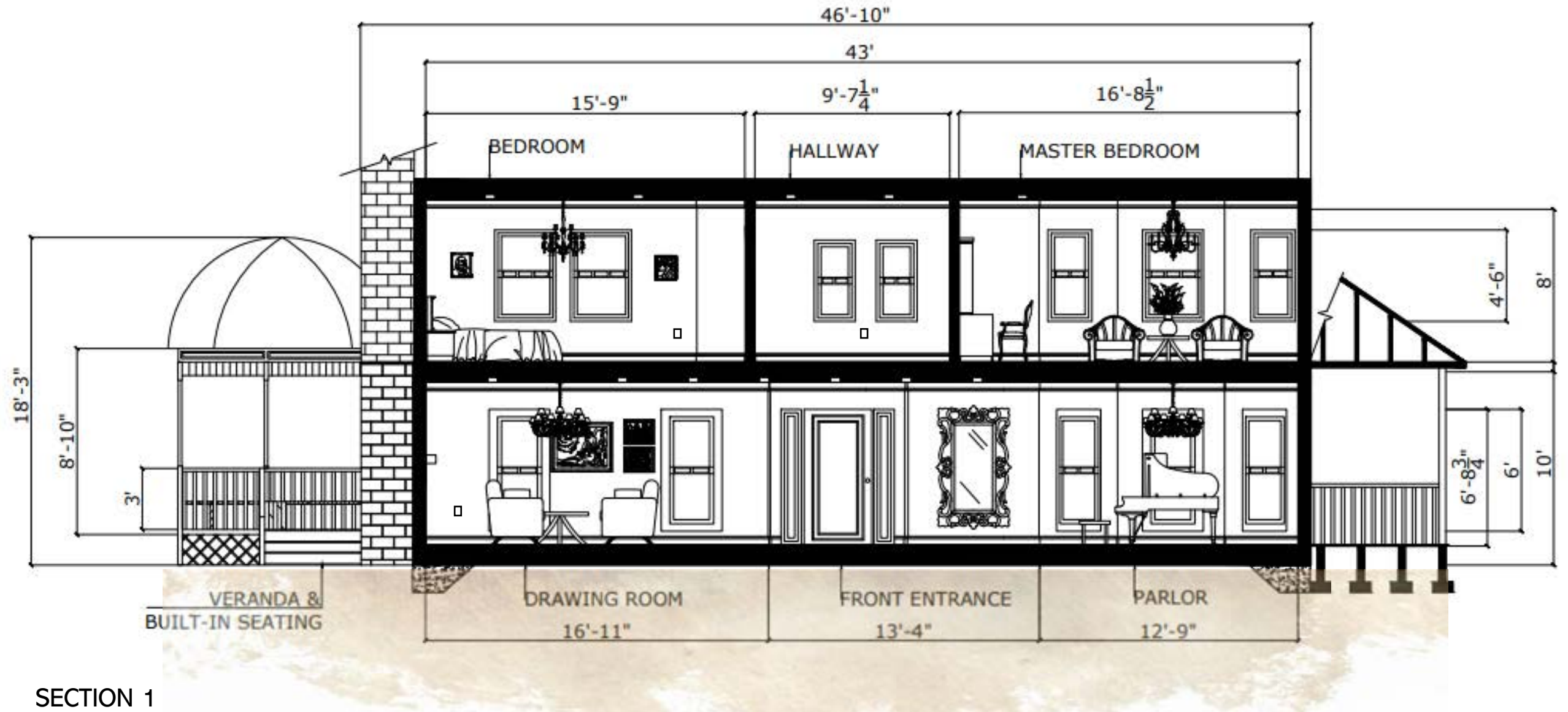
LEGEND

- ← DIRECTION OF SLOPE
- 4"/12" RISE OVER RUN

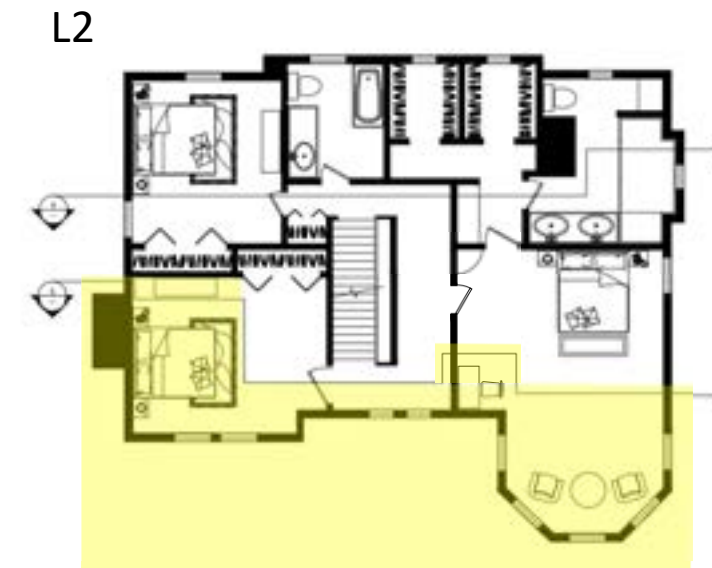
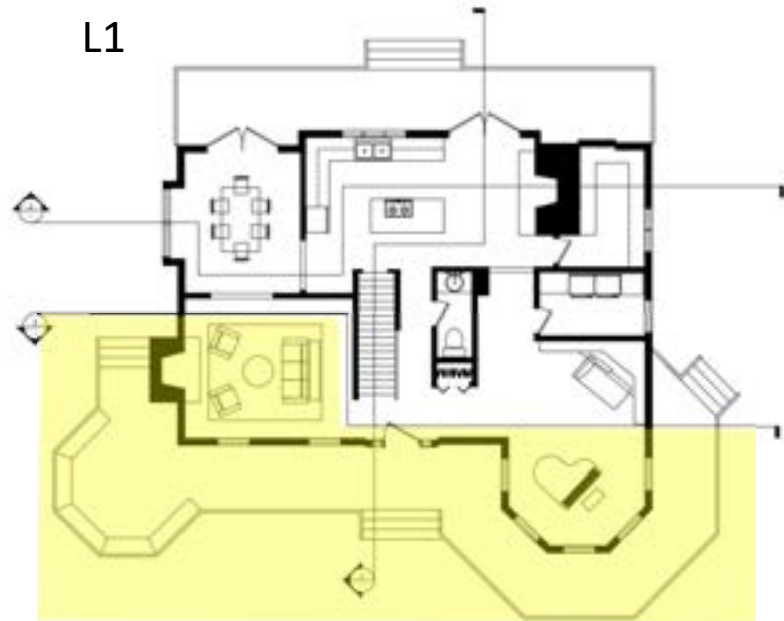
LEVEL 3

1/4" = 1'-0"

PARTIAL BUILDING SECTION



1/4" = 1'-0" 0 1 2 3 4 5 10



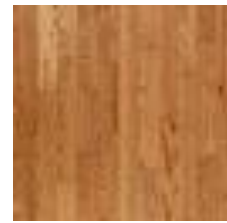
RENDERINGS



THIBAUT
Chamomile T14314



THIBAUT
Honshu T75490

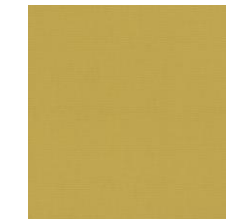


FLOOR & DÉCOR
Red Oak Wire-Brushed



1ST FLOOR BAY WINDOWS

2ND FLOOR MASTER BEDROOM



FABRICUT
Wrangler, Dandelion



THIBAUT
Macbeth T72623



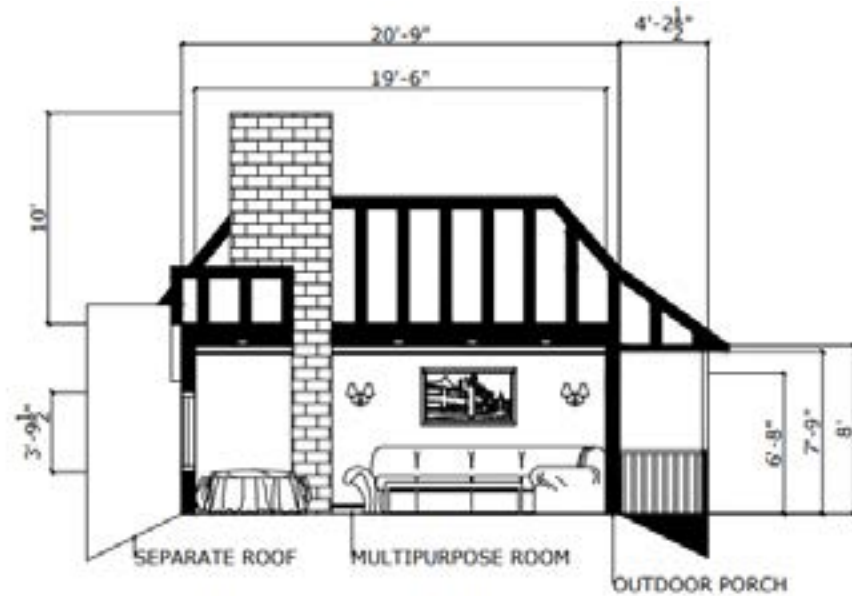
Dolcetto Secretary Desk
Frontgate
37.5" W x 20.75" D x 45.25" H



Signature N7002 Chandelier
Metropolitan Lighting
99" L x 38.25" W x 27.5" H

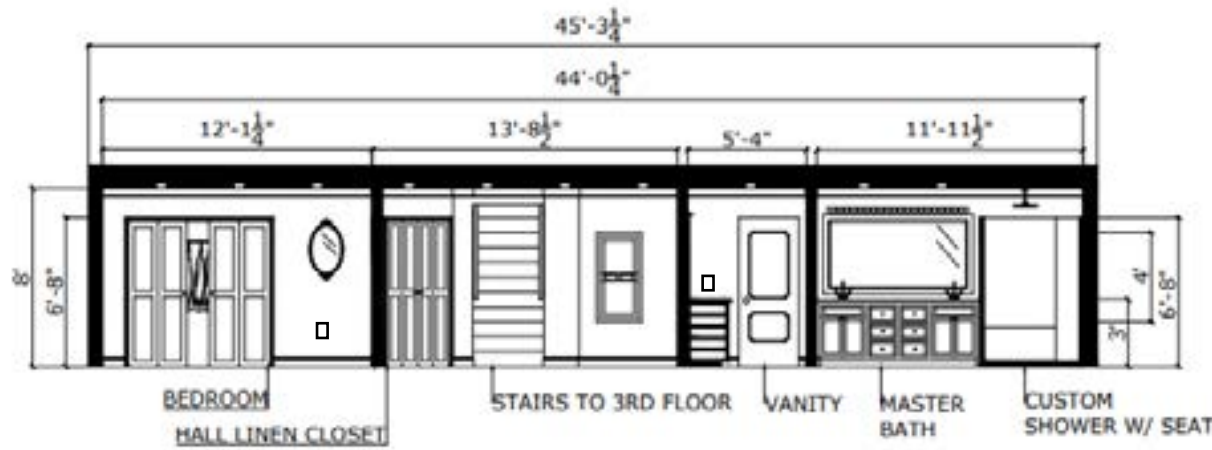


SECTIONS



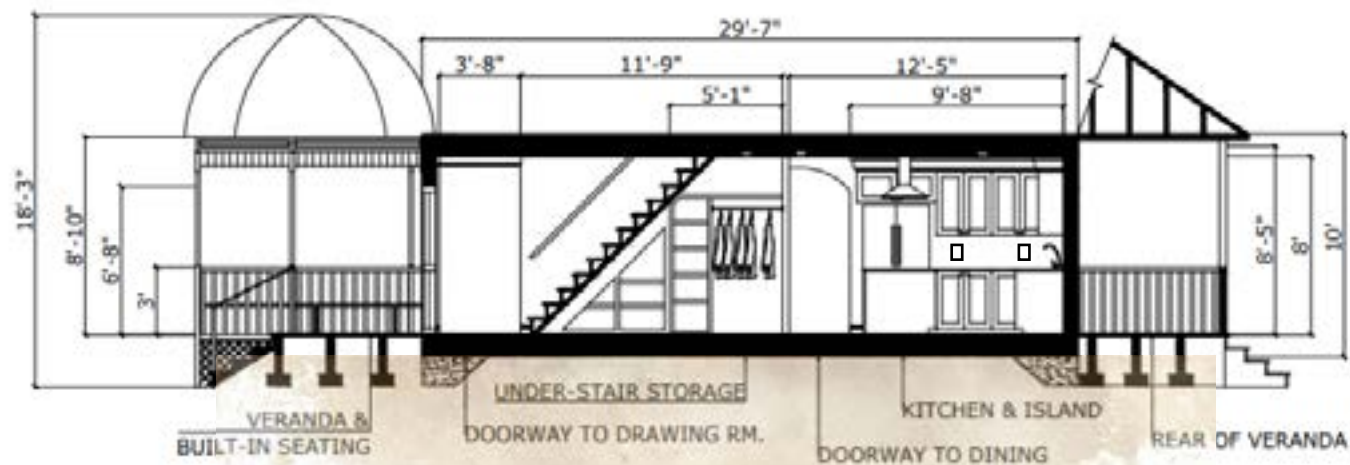
SECTION L3

1/4" = 1'-0"



SECTION L2

1/4" = 1'-0"



SECTION L1A

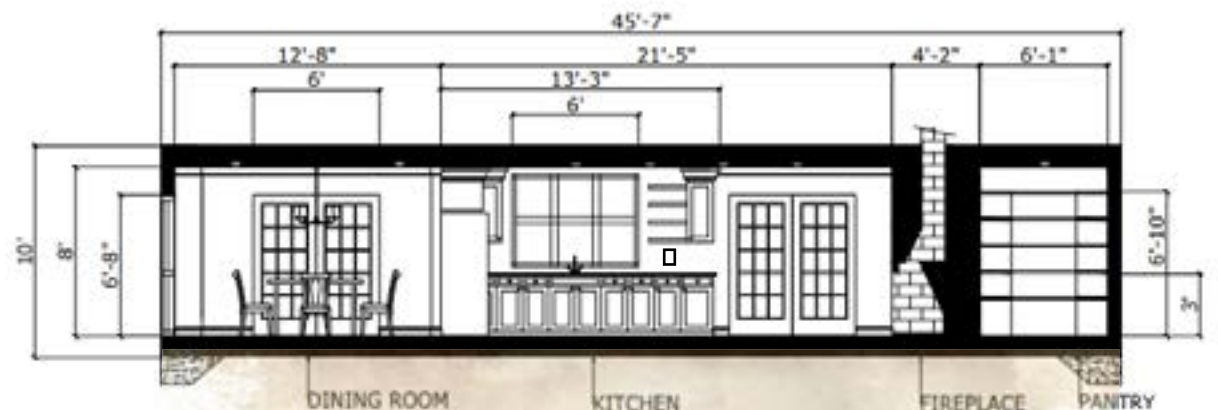
1/4" = 1'-0"



General Notes

*All of the sections shown are broken sections. Because some are perpendicular to each other, they cannot be connected as a "Building Section".

*Sections are detached but displayed over one another to emphasize the look of the structure.



SECTION L1B

1/4" = 1'-0"

RENDERINGS



SW TRADEWIND



FLOOR & DÉCOR
White Stiletto
Ceramic Mosaic



FLOOR & DÉCOR
Flor De Palacio
Porcelain Tile



STONEMARK
GRANITE
Blue Pearl



Pottery Barn
Collem Quadruple Sconce,
Brass and Frosted White Glass
37.75" L x 8" D x 10" H



Devoll Mirror
Uttermost
23" W X 37" H X 1" D



2ND FLOOR MASTER BATHROOM



FABRICUT
Madison, Cypress



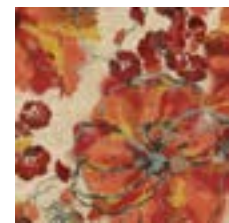
FABRICUT
Gardinier, Coral



THIBAUT
Helena T4101



FABRICUT
Zetula, Spice

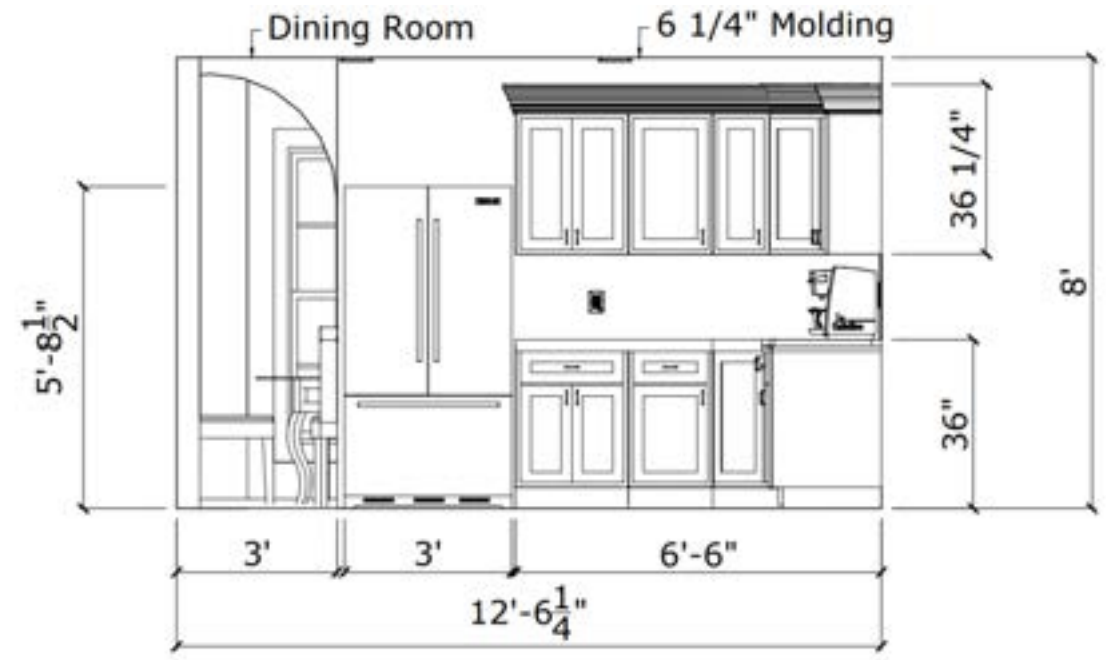


RUGGABLE
Watercolor Floral Rug
(Coarl)

2ND FLOOR BEDROOM

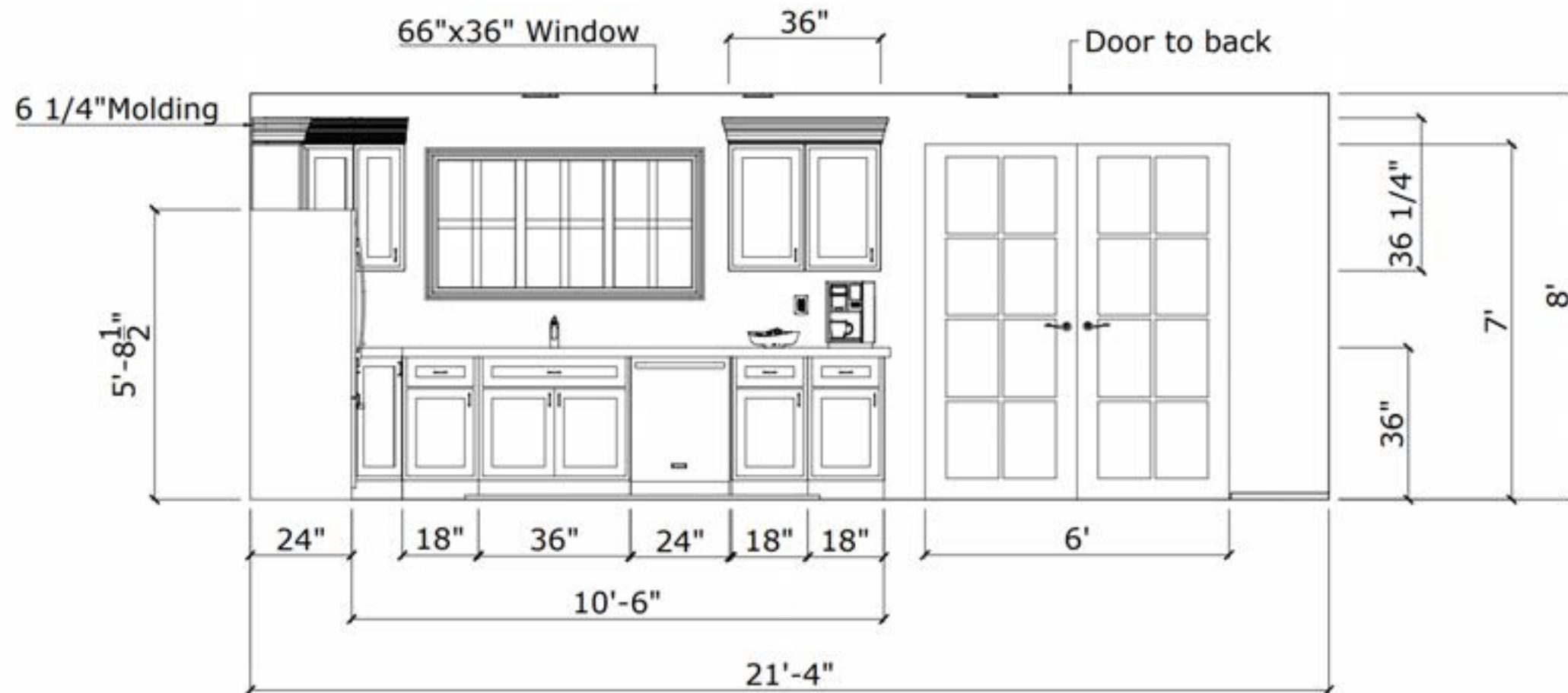


KITCHEN ELEVATIONS



KITCHEN ELEVATION – FRIDGE SIDE

1/2" = 1'-0"



KITCHEN ELEVATION – SINK SIDE

1/2" = 1'-0"



SW OCEANSIDE



SW FORSYTHIA

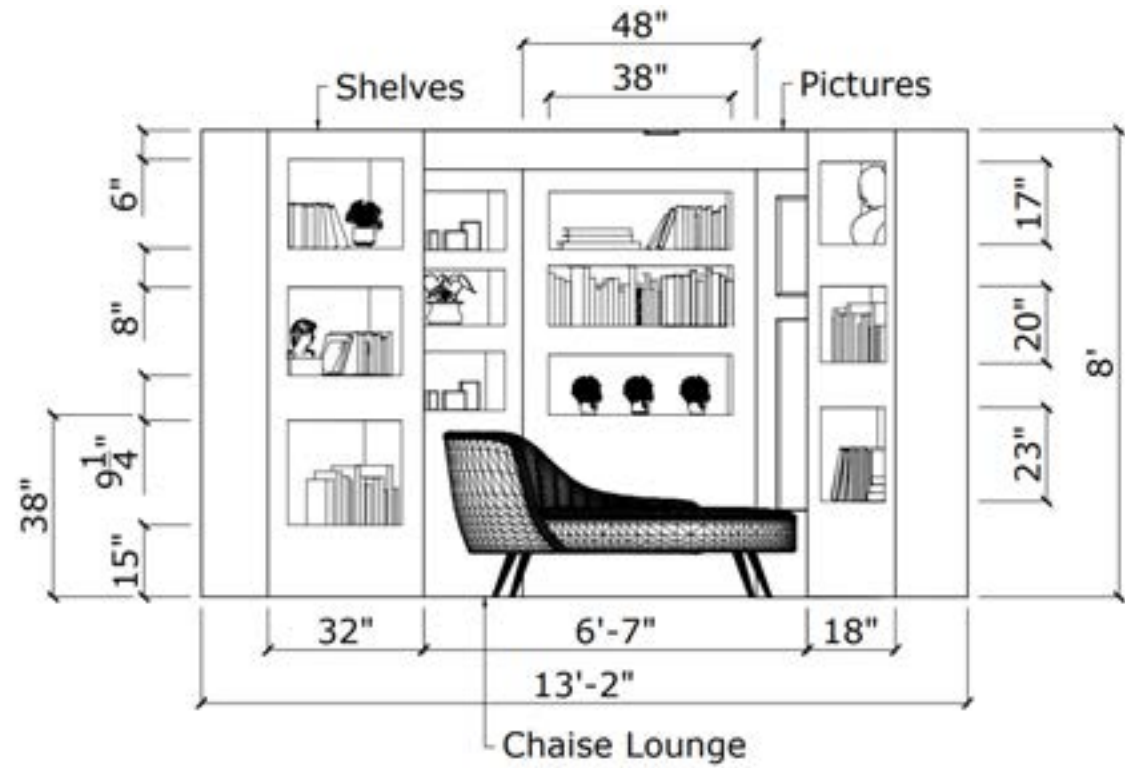


RUGGABLE
Anza Polychrome Rug
2.5'x7' Runner



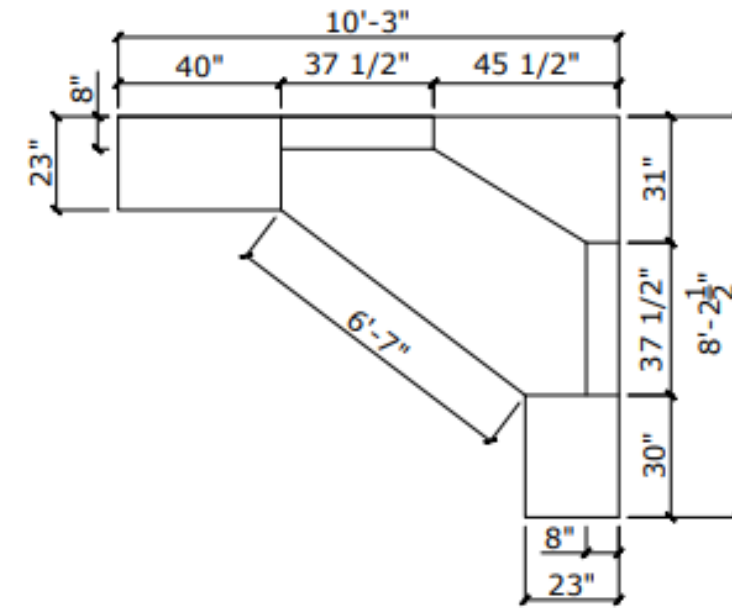
STONEMARK
GRANITE
Azul Celeste

PARLOR SECTION & DETAIL



PARLOR CUSTOM SHELVING ELEVATION

1/2" = 1'-0"



PARLOR CUSTOM SHELVING PLAN VIEW

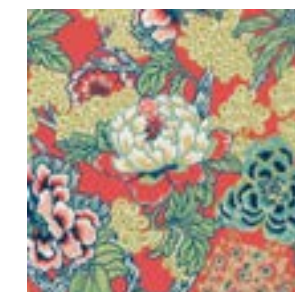
1/2" = 1'-0"



FABRICUT
Denver Blackout,
Cobalt Blue



Jennifer Taylor
Celeste Tight Back Chaise Lounge
69½"Wx28½"Dx30"H

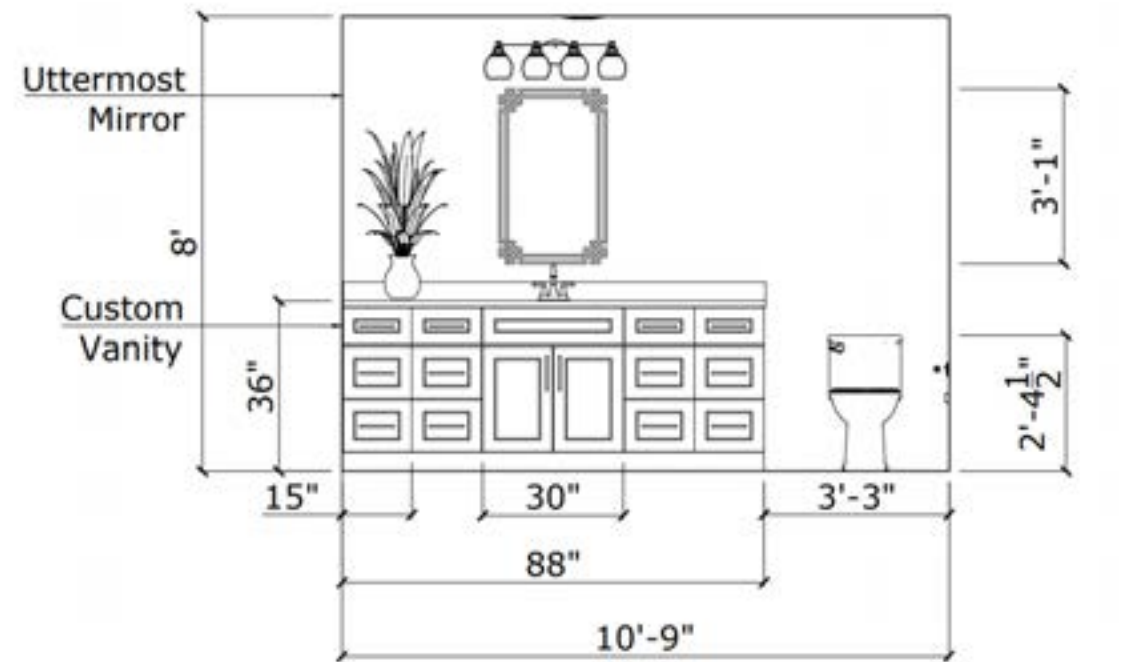


THIBAUT
Honshu T75490



FLOOR & DÉCOR
Red Oak Wire-Brushed

BATHROOM ELEVATIONS & DETAILS



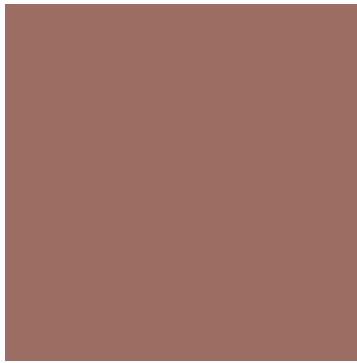
3rd FLOOR BATHROOM ELEVATION

1/2" = 1'-0"



2ND FLOOR MASTER BATHROOM SHOWER DETAIL





SW REDDENED EARTH



SW TRADEWIND



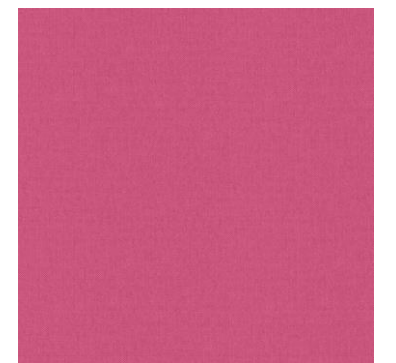
SW OCEANSIDE



SW FORSYTHIA



FABRICUT
Cobleskill, Cabernet
(100% Polyester)



FABRICUT
Artisan, Magenta
(59% Poly., 41% Cotton)



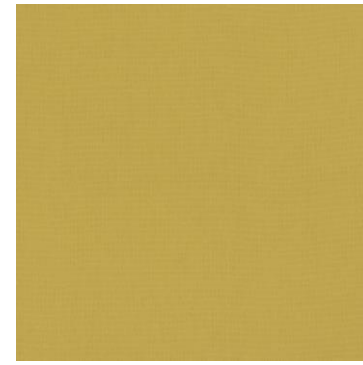
FABRICUT
El Camino, Jasmine
(95% Poly., 5% Cotton)



FABRICUT
Privette, Soleil
(55% Linen, 45% Cotton)



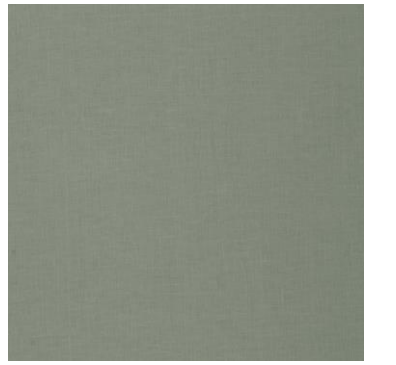
FABRICUT
Siren Blackout, Orchid
(100% Polyester)



FABRICUT
Wrangler, Dandelion
(100% Cotton)



FABRICUT
Ming, Aegean
(100% Polyester)



FABRICUT
Madison, Cypress
(100% Linen)



FABRICUT
Zetula, Spice
(62% Poly., 38% Cotton)



FABRICUT
Jamestown, Putty
(77% Rec. Polyester, 23% Organic Cotton)



FABRICUT
Denver Blackout, Cobalt Blue
(100% Polyester)



TREND
05081 Porcelain
(100% Cotton)



FABRICUT
Gardinier, Coral
(55% Linen, 45% Cotton)

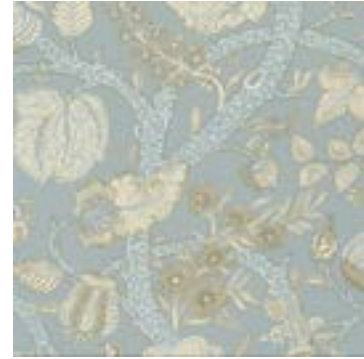


THIBAUT
Honshu T75490





THIBAUT
Helena T4101



THIBAUT
Macbeth T72623



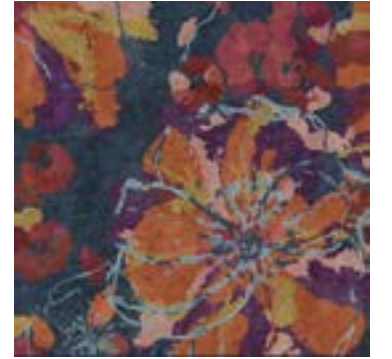
THIBAUT
Chamomile T14314



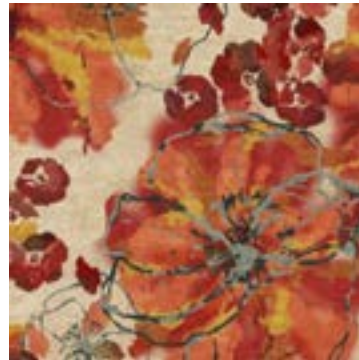
THIBAUT
Windsor T14301
(GRAY)



THIBAUT
Yukio T20847



RUGGABLE
Watercolor Floral
Rug (Navy)
6'x9'



RUGGABLE
Watercolor Floral
Rug (Coarl)
5'x7'



RUGGABLE
Frida Floral Rug
(Navy)
5'x7'



RUGGABLE
Anza Polychrome
Rug
2.5'x7' Runner



FLOOR & DÉCOR
White Stiletto
Ceramic Mosaic



FLOOR & DÉCOR
Flor De Palacio
Porcelain Tile



FLOOR & DÉCOR
Isadora Patina
Porcelain Tile



STONEMARK
GRANITE
Blue Pearl



STONEMARK
GRANITE
Azul Celeste



FLOOR & DÉCOR
Red Oak Wire-Brushed



Classique Sofa
Haverty's Furniture
94" W x 38" H x 40" D



Armless Tufted Back Accent Chair
Myers Goods
26" W x 32.35" H x 26" W





**Heathered Brownstone Round
Cocktail Table**
Liberty Furniture
37" W x 18" H x 37" D



Neva Round Daybed
Six Penny
3"W x 36"H x 52"D



Deep Tufted Bench
Williams Sonoma
62" W x 21.5" D x 17.5" H



Dhairya Side Chair
Rosdorf Park
23.38" W x 43.63" H x
32.75" D



**English Style Traditional
Wingback Chair**
Chairish
36" W x 23" D x 50" H



**Henley Tufted L-Shaped Corner
Sectional**
Pottery Barn
102" W x 102" D x 37" D x 27.5" H



Dolcetto Secretary Desk
Frontgate
37.5" W x 20.75" D x 45.25" H



**House of Hampton
Beauregard Vanity Set w/
Stool and Mirror**
54.1" H x 31.5" W x 15.8" D



**Jennifer Taylor
Celeste Tight Back
Chaise Lounge**
69½"Wx28½"Dx30"H



**Kathy Kuo Home
Racquel French Antique
Champagne Silver Leaf
Vanity Mirror**
42.5" H x 27.5" W x 1.5" D



Devoll Mirror
Uttermost
23" W X 37" H X 1" D



Signature N7002 Chandelier
Metropolitan Lighting
99" L x 38.25" W x 27.5" H



Pippa Grande Chandelier
Visual Comfort
Width: 46" W x 35" H
Canopy: 5.75" Round



**Pottery Barn
Collem Quadruple Sconce,
Brass and Frosted White Glass**
37.75" L x 8" D x 10" H



**Pottery Barn
Fig Iron Table Lamp**
16" dia, 34"H