



CONDO PROJECT DES 282.01 SP23

Professor Jerome Gomez
Reilly Richmond



Bessie & Miriam are two best friends, more like sisters, both at the ripe age of 82. Bessie is a witty and lovable African American woman from Winston-Salem, North Carolina. She graduated from UNC Chapel Hill with a bachelor's degree in early childhood education. From there, Bessie applied and got accepted into Columbia University, where she met Miriam, and earned a master's degree in education. Miriam is an enthusiastic, ambitious Caucasian-Jewish woman from Long Island, New York. Miriam worked as a waitress to pay her way through community college and eventually earned her bachelor's degree. She met Bessie at Columbia while she was on track to earn a master's degree in Jewish Studies. Although they moved away from each other after finishing their Master's, they kept in touch over the years. Both women agreed to move in with each other after their husbands had passed, and so they decided to create a new life for beyond their retirement years. Most of their lives they have lived in cold weather so they decided their new home would be in the Florida Keys, specifically Islamorada, Florida. The windows throughout the condo allow for lots of natural light which is highly requested by both women. The different views consist of an aquamarine ocean, white sandy beach, and a small cove on one side that catches the sunset.

CLIENT PROFILE

Design Concept

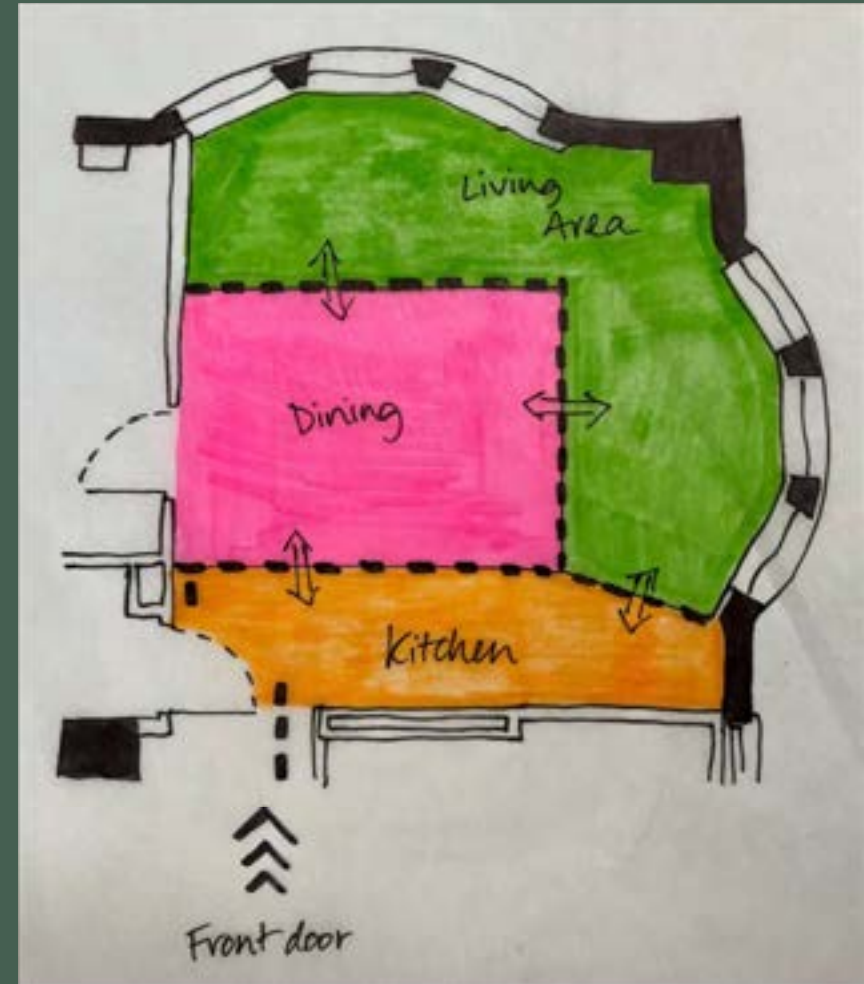
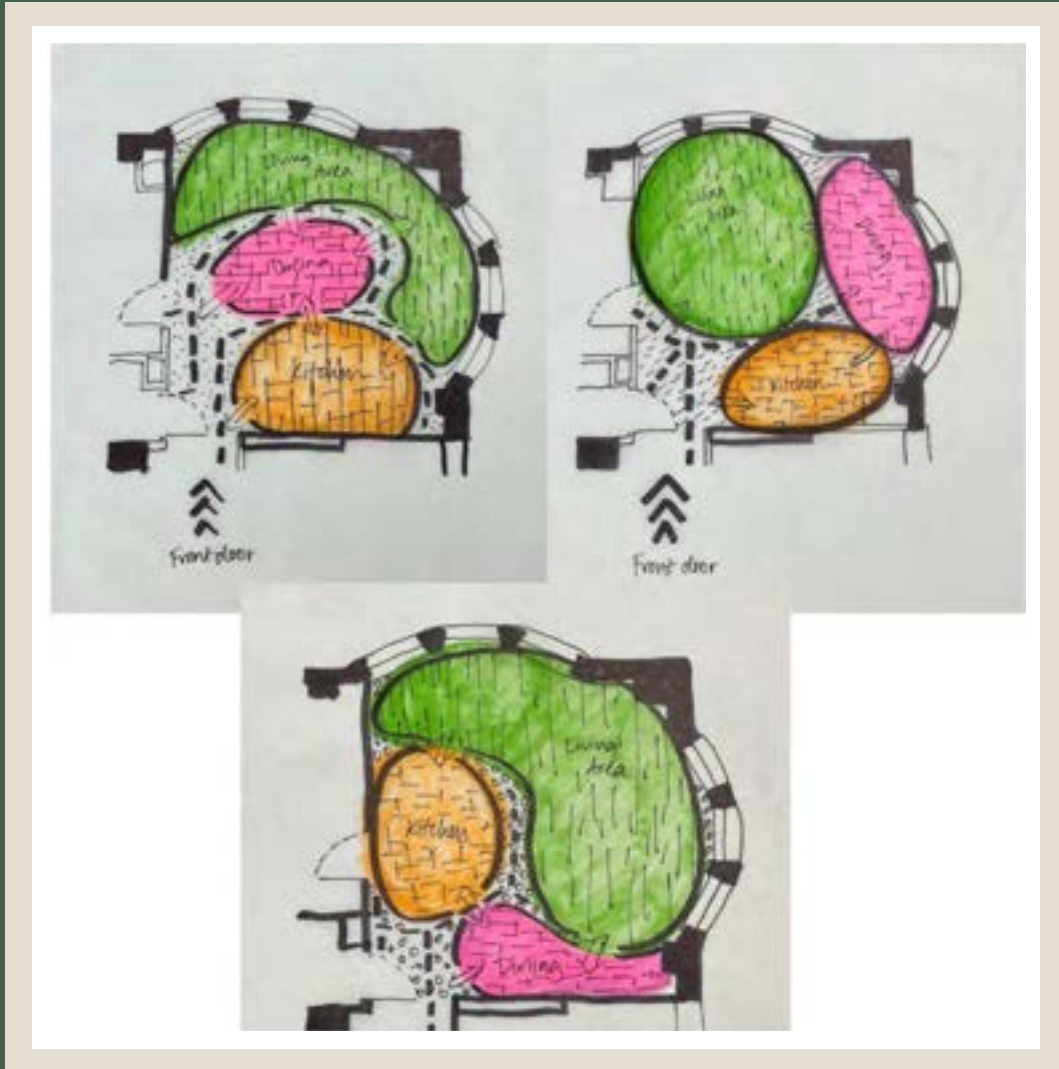
I want to create a space where the outside and inside equally share part in the design. The aesthetic should convey a coastal influence, observing colors such as the surf, sand, and native flora. The Clients are looking for a serene modern style, far from tacky nautical design.

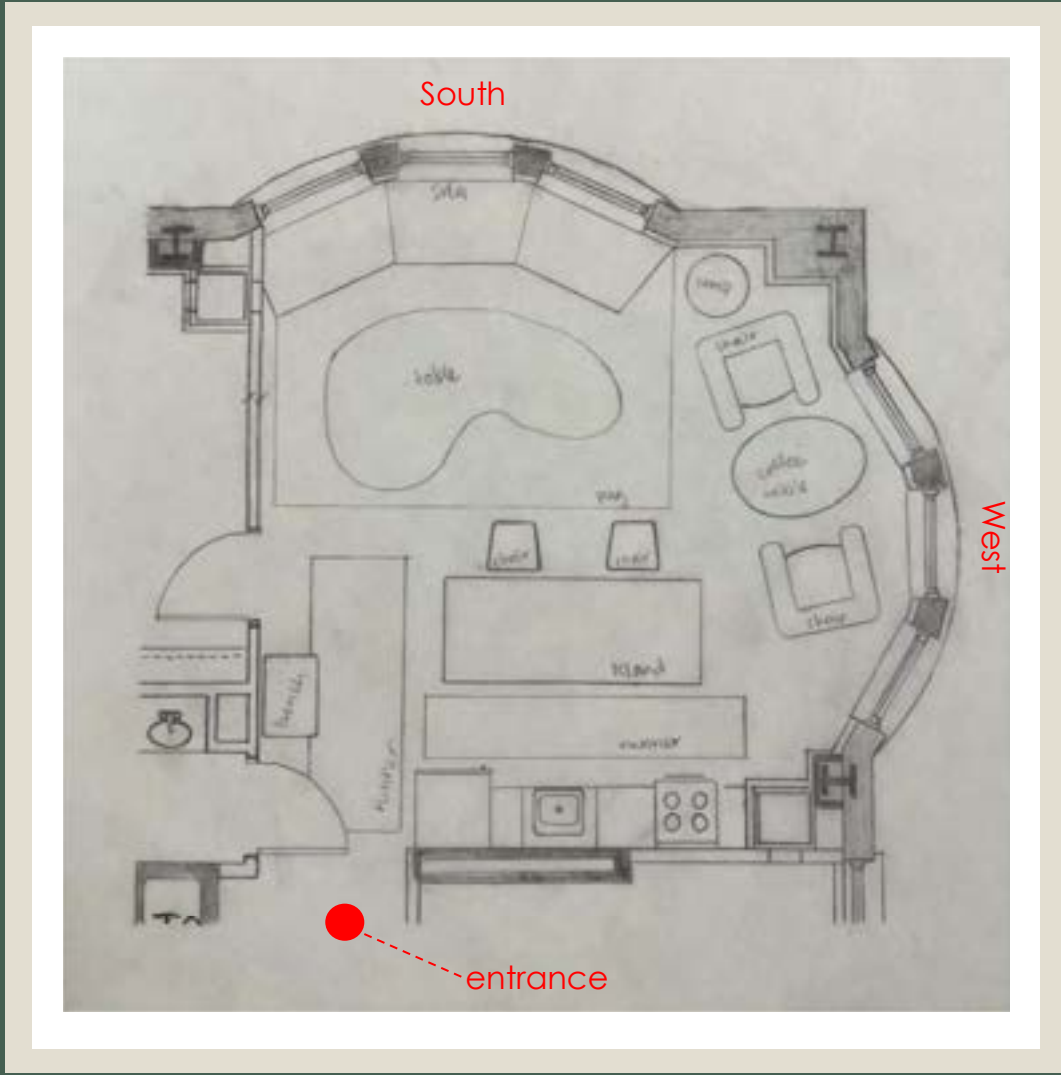
Cozy – Complimenting textures of wool and velvet allow the visitor to absorb the refined space and find a comfortable niche to spend their day at.

Bold – Earthy colors help invite the exotic hues of Florida inside, reflecting the ocean, beach, sunshine and wildlife life.

Welcoming – Composed of an open, airy room, whether it's Sunday brunch or game night, there is a place for everyone.

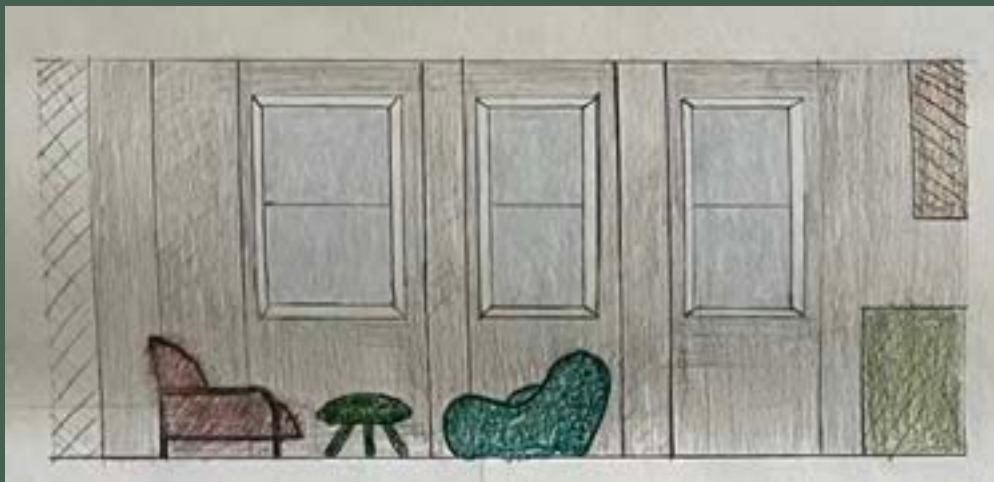
Bubble & Blocking



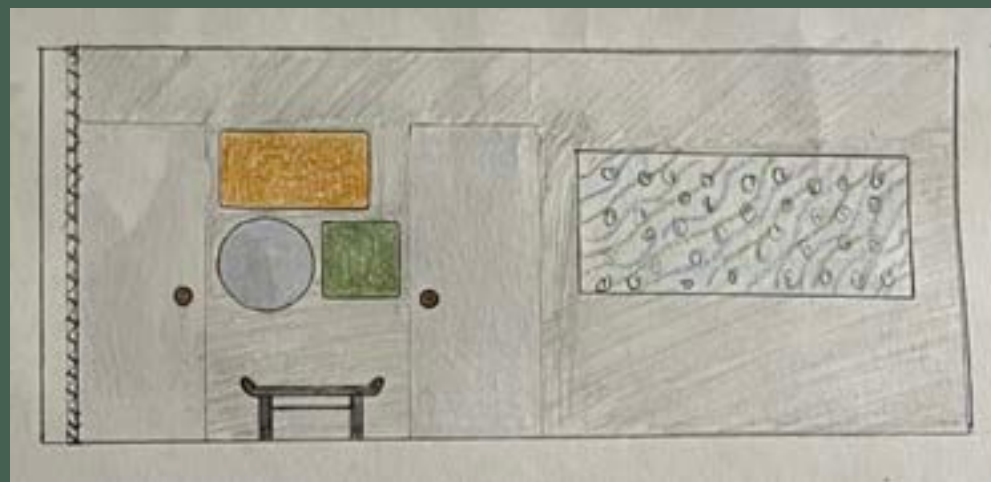


Floor Plan

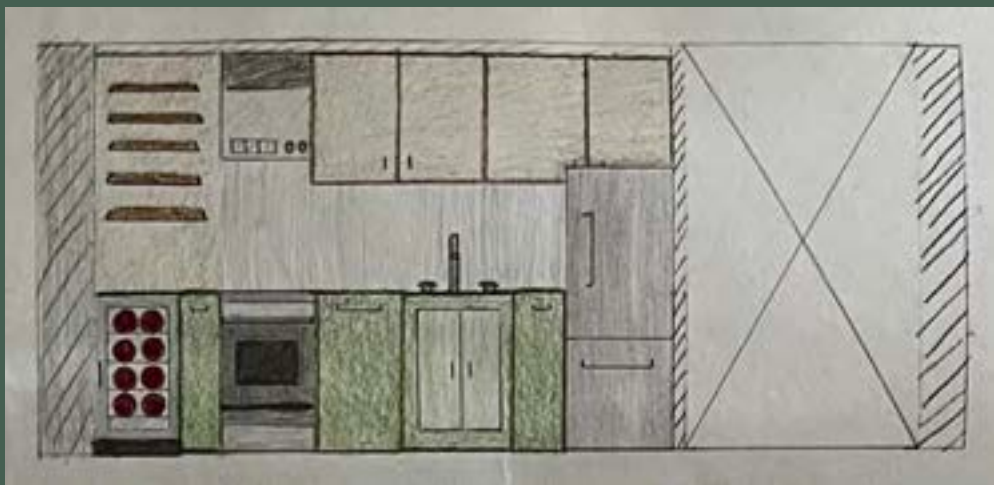
Elevations



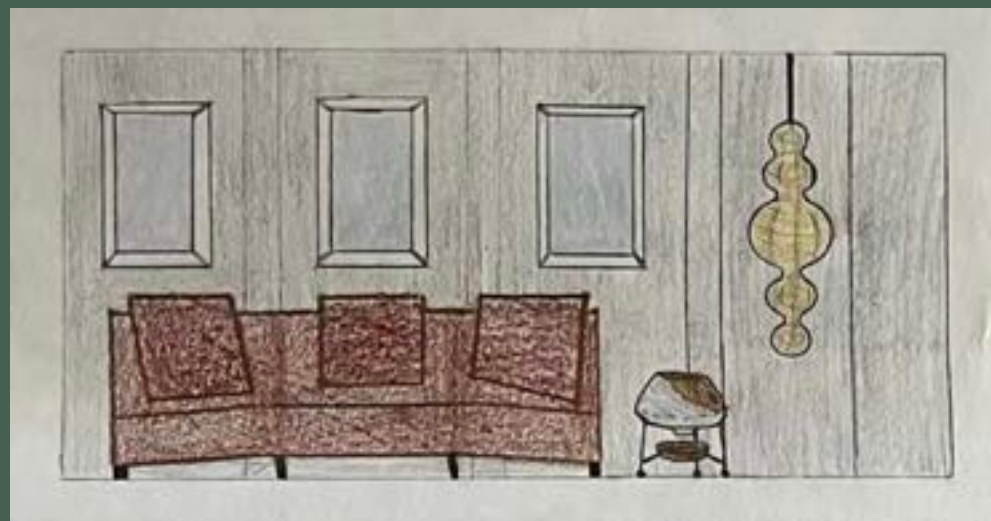
$\frac{1}{4}'' = 1'-0''$



$\frac{1}{4}'' = 1'-0''$

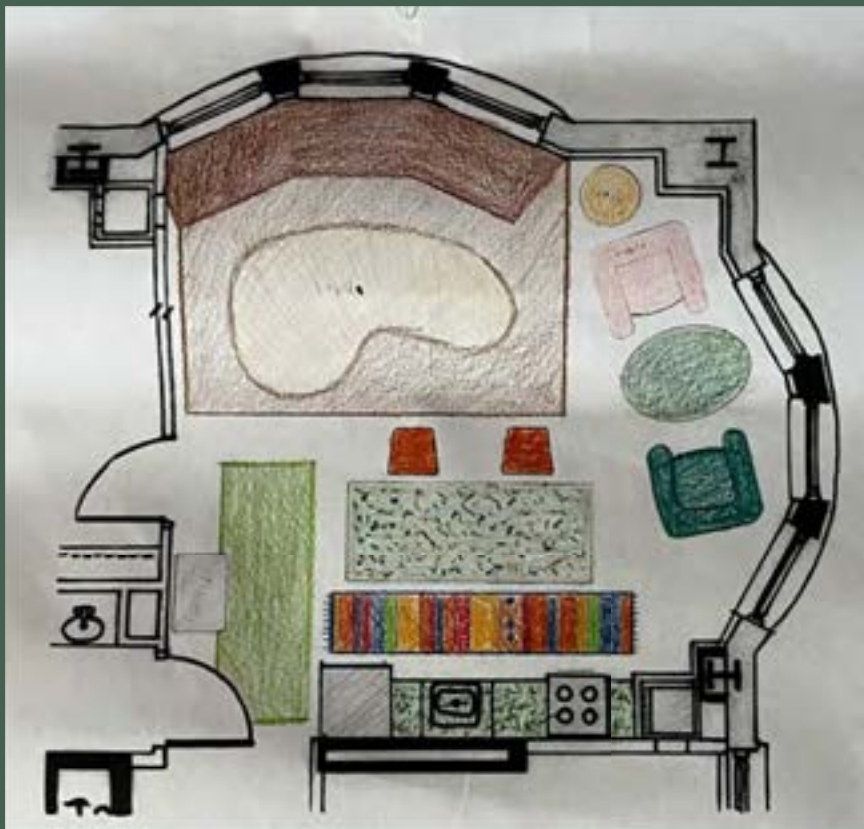


$\frac{1}{4}'' = 1'-0''$



$\frac{1}{4}'' = 1'-0''$

Color scheme



Working with an analogous color scheme, I wanted to bring the natural hues of Florida inside. Including lush greenery and a pop of yellow-orange to reflect the energizing sunshine. Subtle blues are added to compliment the ocean view.



Flooring inspiration
-Lighter-toned wide plank

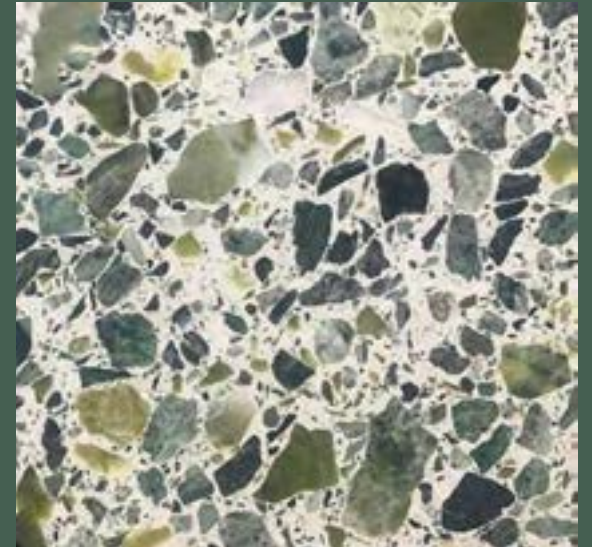


KITCHEN

Sink inspiration



- Integrated, single basin
- Terrazzo on kitchen counter including island



Fixtures

Brand: Delta
Finish: Arctic Stainless
-single handle pull out wand
(ADA compliant)



Appliances

Brand: GE

Finish: Stainless Steel

Dimensions: 70" H x 23.5" W

- Bottom-Freezer Refrigerator



Brand: GE

Finish: Stainless Steel

Dimensions: 36.25" H x 30" W

-Slide-In Front Control Gas
Double Oven Range



Brand: Signature

Finish: Stainless Steel

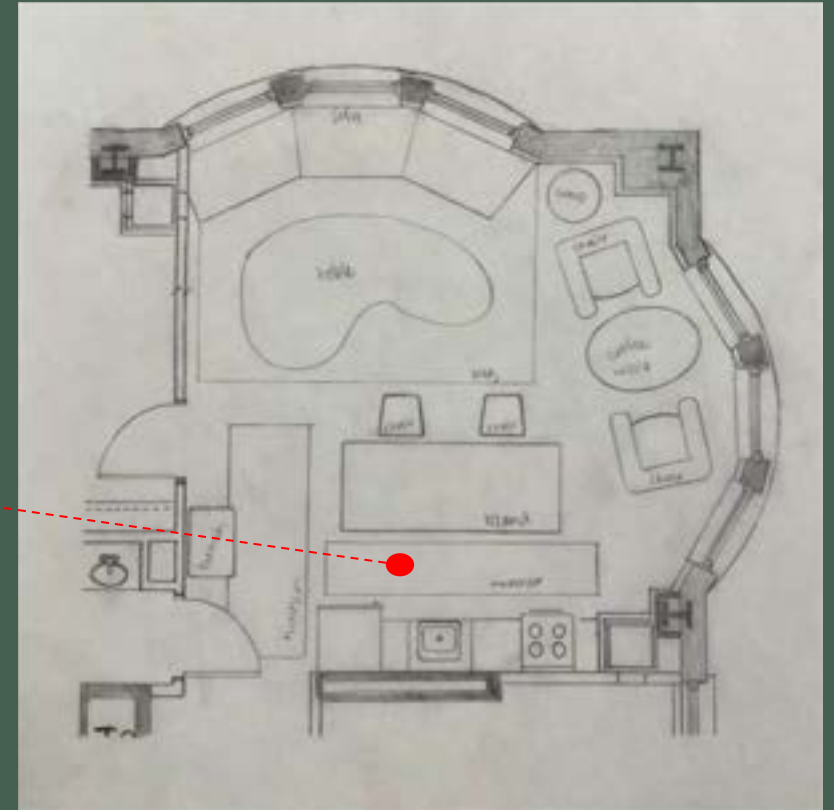
Dimensions: 35" H x 12.6" W

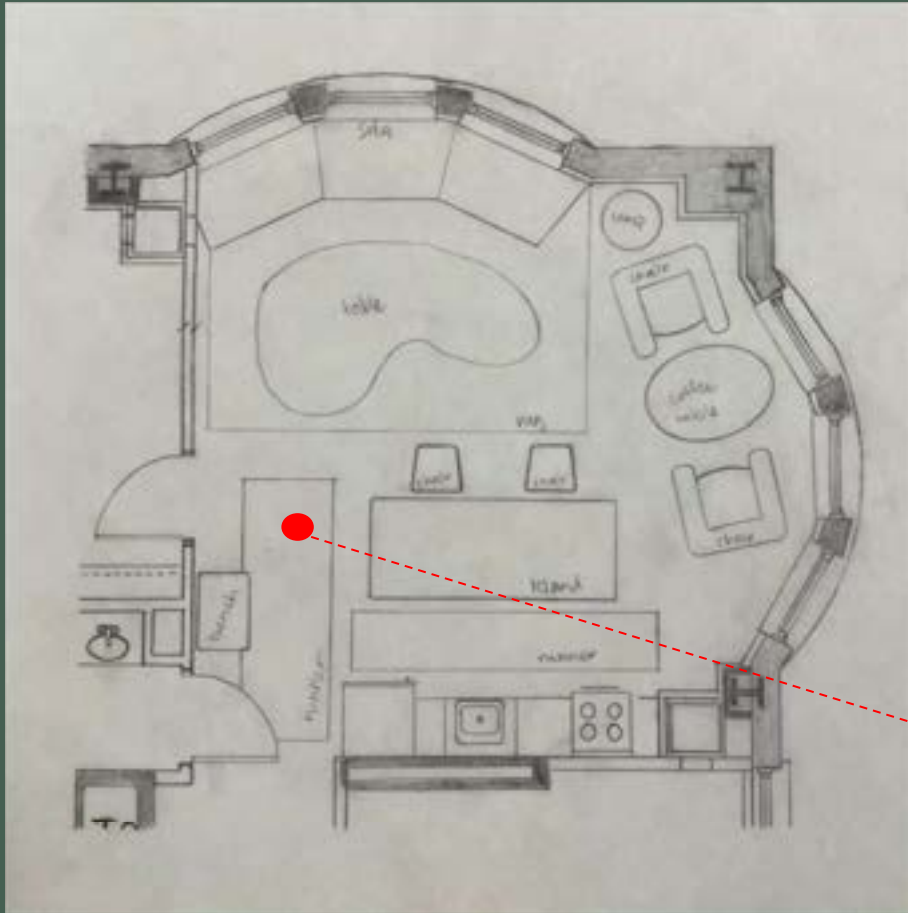
- Built-in Undercounter Wine
Refrigerator





Brand: Perigold (Bokara Rug Co.)
Material: Wool
Dimensions: 2'9" x 8'4"
- Handmade Moroccan Area Rug in
Brown/Orange/Blue





Brand: Living Spaces

Material: Wool

Dimensions: 8' x 3'

- Statement rug in the foyer, metallic base layered in lime



Ivory Sherpa

Brand: All Modern

Material: Solid Oak, polyester

Dimensions: 17" H x 49" W

- Yohali Bench, tufted cushion
- Neutral, soft upholstery with brass cap legs

Brand: CB2

Material: Velvet

Dimensions: 34" H x 25" W

- Cotton/poly velvet, Iron frame with black powder coat



WELLS, BROWN
VELVET





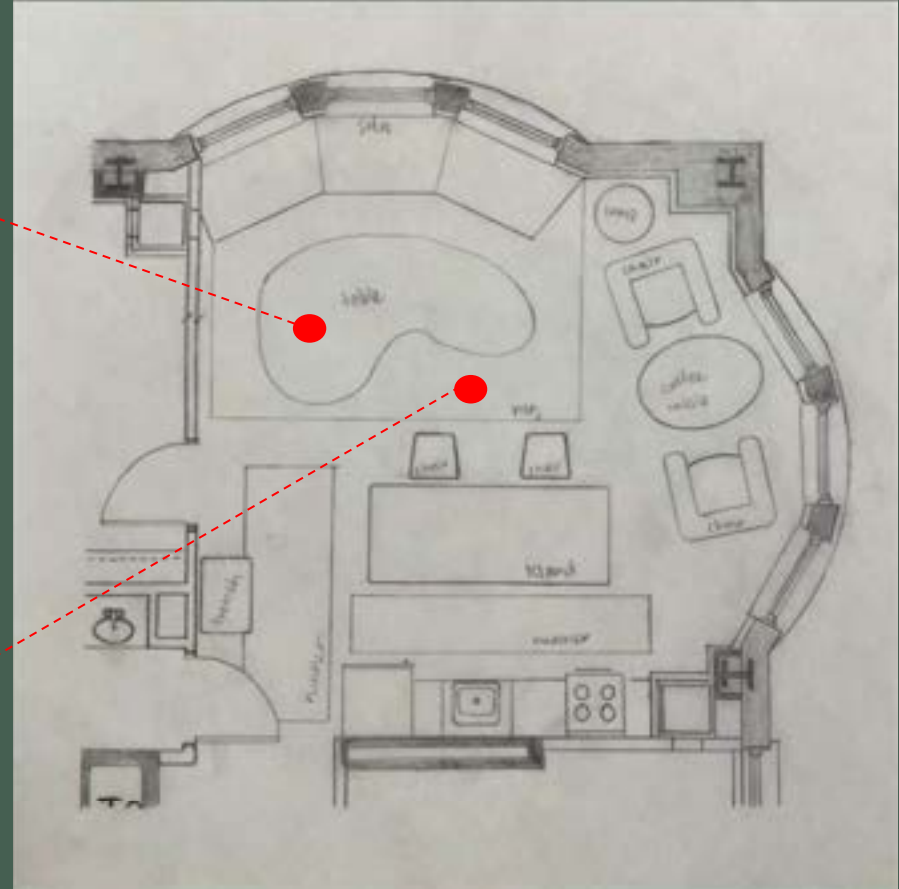
LIVING AREA



Brand: Crate & Barrel
Material: Concrete/wood
Dimensions: 15.5" H x 68.25" W
- Set of 2, contemporary meets organic, naturally occurring wood grain swirls in mappa burl veneer



Brand: Perigold
Material: Wool
Dimensions: 7'10" x 9'8"
-Contemporary eclectic ivory wool area rug





Brand: CB2

Material: Velvet

Dimensions: 31" H x 102.25" W

- Metric Quarter Octagon Corner Sofa Model, metal legs with black Satin finish



NOVA, CHESTNUT
VELVET

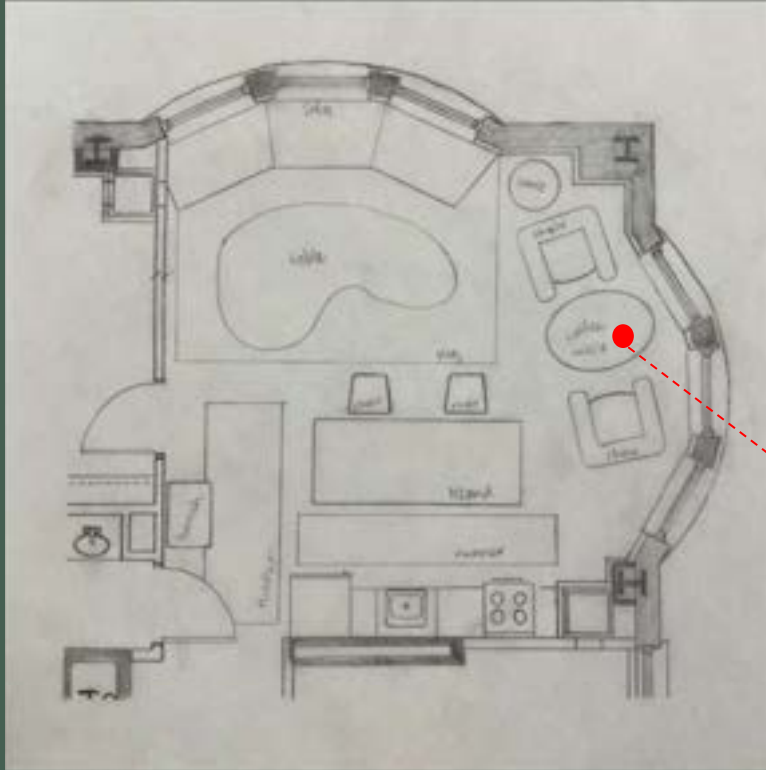


Brand: Target

Medium: Woven Reed

Dimensions: 72" H x 72" W

-Roll up shades, unpeeled and polished appearance lets in soft light and lets in a breezy feel



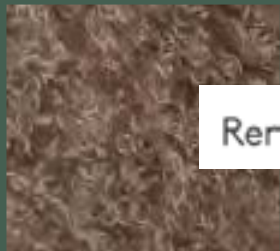
Brand: CB2

Medium: Marble

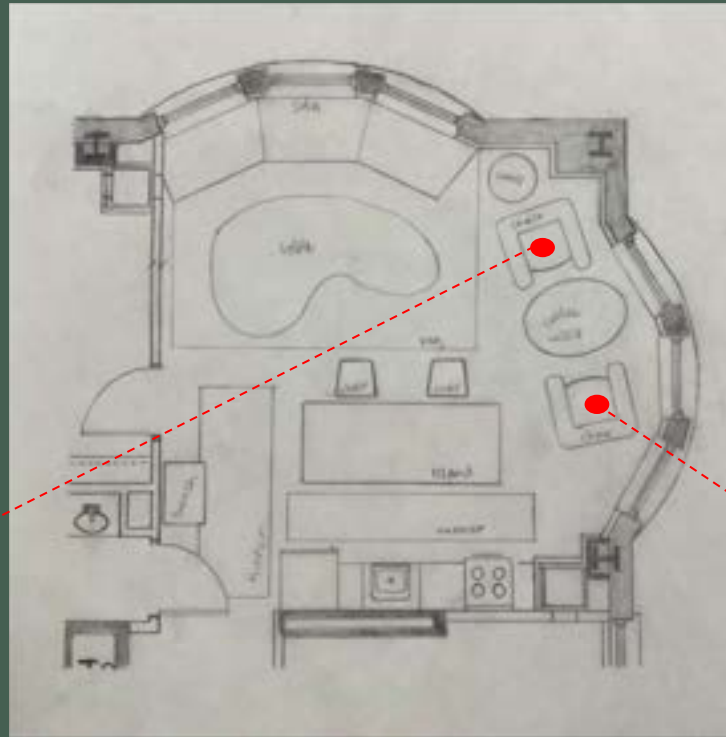
Dimensions: 14" H x 16" Diameter
-Jaxx green marble side table



Brand: CB2
Medium: Sheepskin
Dimensions: 29" H x 34" W
-Mongolian sheepskin, blackened brass metal



Ren Grey



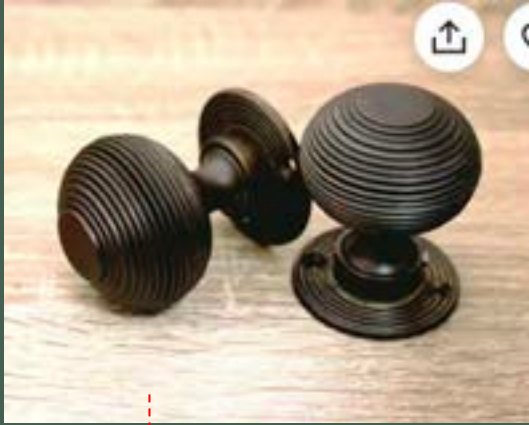
KASHMIR JADE



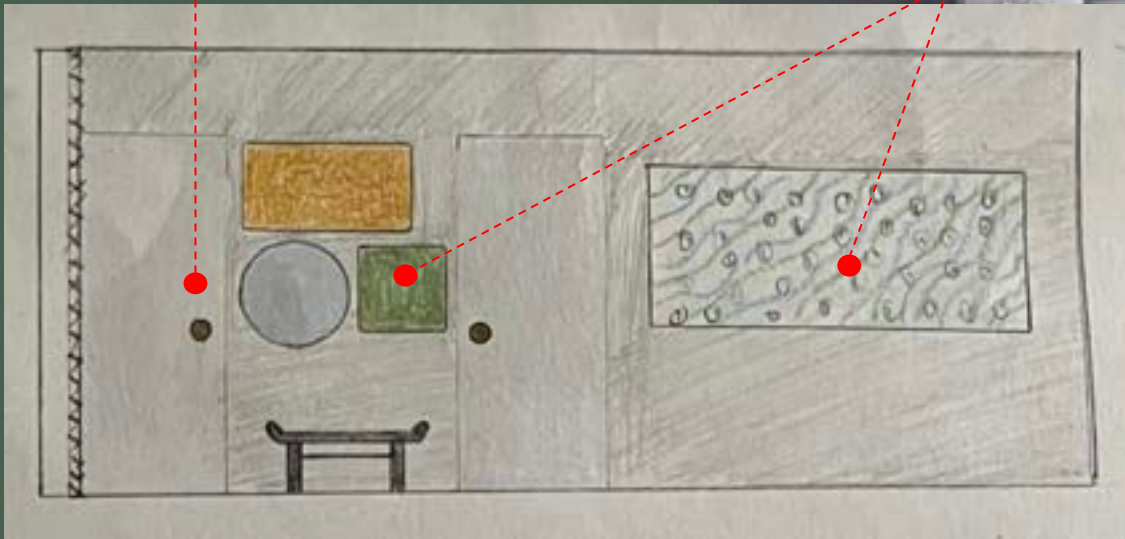
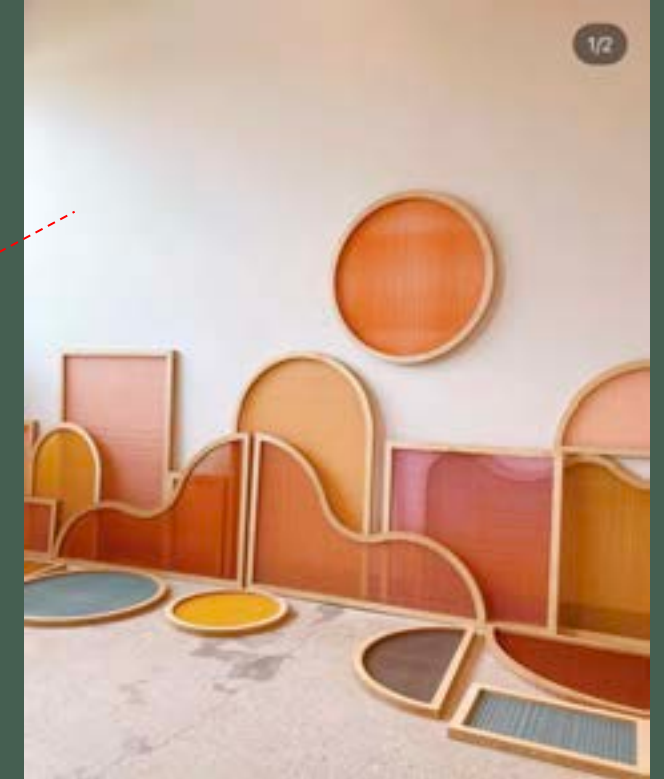
Brand: Baxter
Medium: Leather
- Polish leather carried out on Whole full grain hides of native American bulls



EXTRA



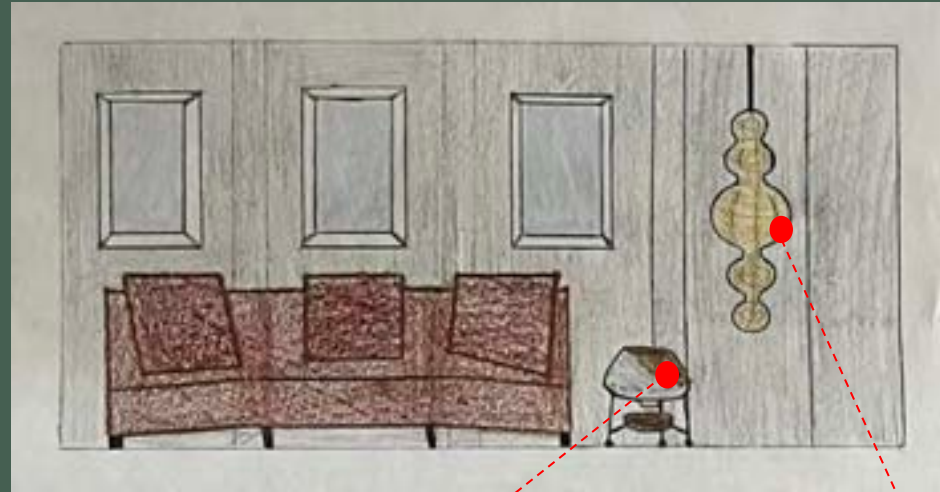
Doorknob inspiration



Art piece inspirations



Brand: Sage & Sill
Material: Glazed terracotta/metal
Dimensions: 12" H x 9" Diameter
- White dipped clay teardrop pot with saucer stand



Brand: Akirastudioart
Medium: Rice paper
Dimensions: 32.6" H x 17.7" W
-Noguchi Wabi Sabi Inspired Paper,
Japanese Style, Irregular Shape