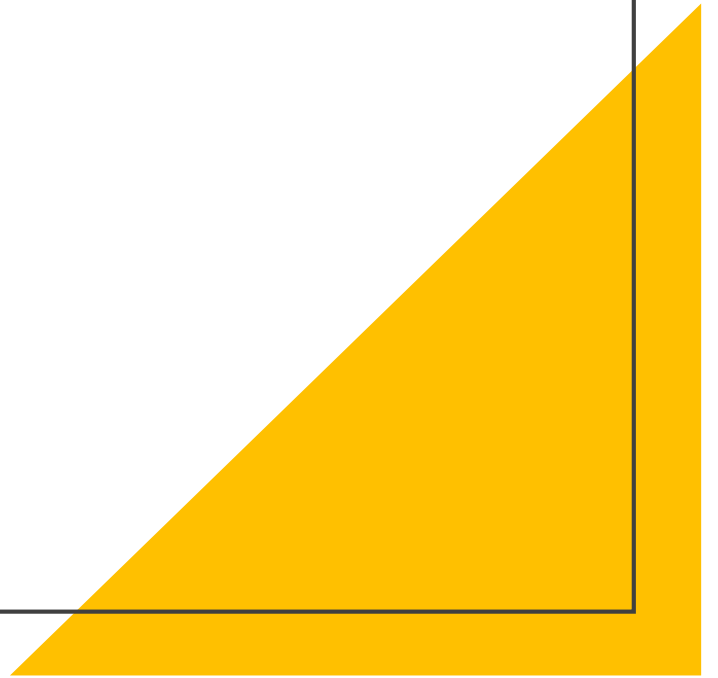


# Means of Egress Montgomery

Joscelyn Gallego



# What is means of Egress?

## Exit Access

- Entrance of the exit

## Exit

- Found between the exit access and the exit discharge / public way

## Area of Refuge

- Area for those unable to use a stairway to wait for assistance in emergency

## Exit Discharge

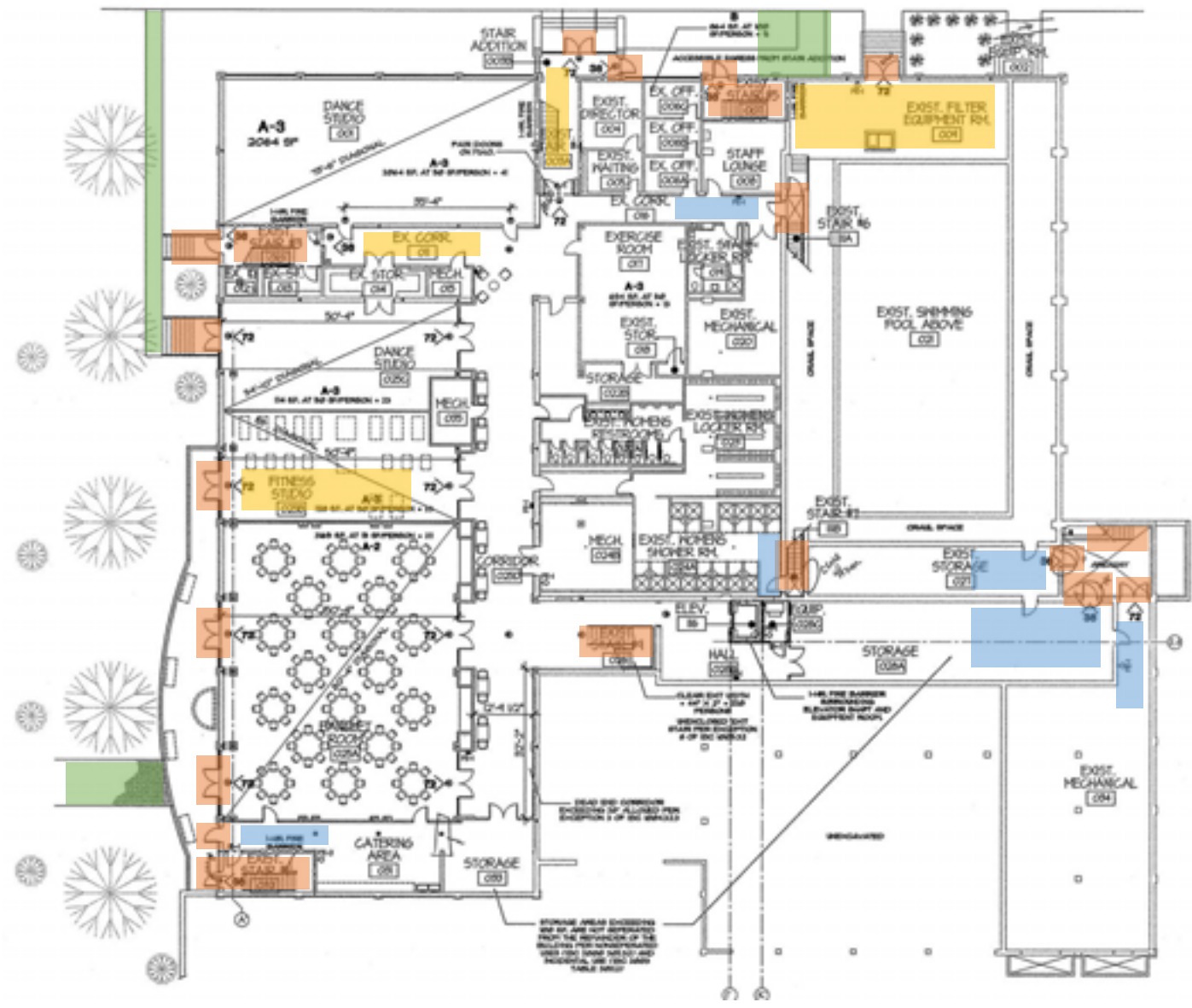
- Found between the termination of an exit and the public way

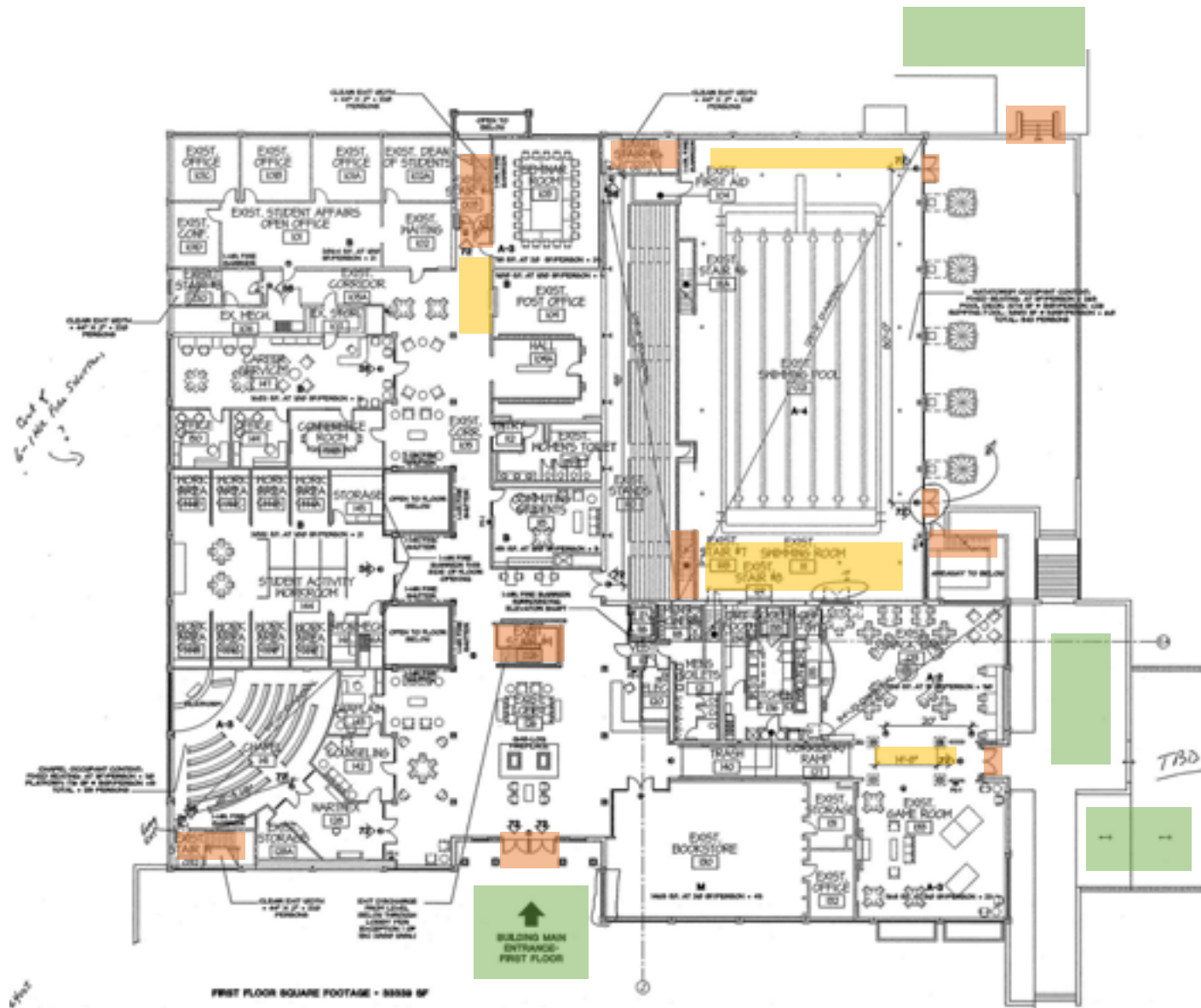
## Public Way

- Area outside a building that is legally considered public

# Ground Floor

- Exit
- Exit Discharge
- Public Way
- Exit Access
- Passageway





## Ground Floor

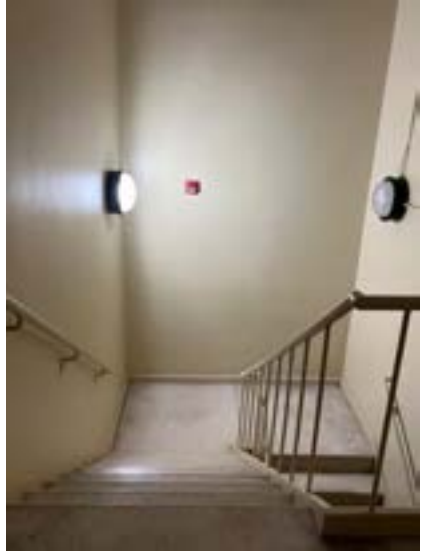
- Exit
- Exit Discharge
- Public Way
- Exit Access
- Passageway



# Identifying Means of Egress



Exit access



Exit



# Identifying Means of Egress



Passage Way



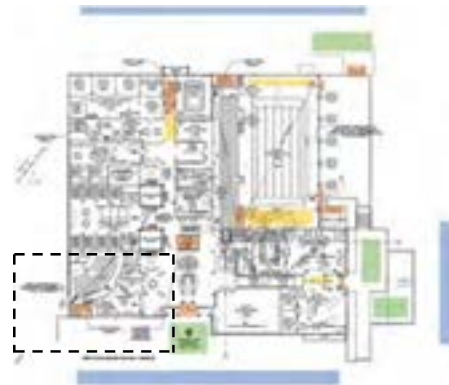
Exit Discharge



Public Way



Area of Refuge





# Identifying Means of Egress



Exit



Exit Discharge



Public Way



Notes: 180 degrees, doesn't block 1/2 of corridor width when opening and is 7" of the corridor wall when open



# Stairs & Railings

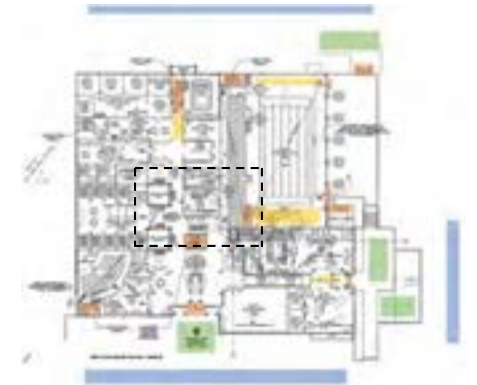


Handrail 38"

Guard 46"

11" Tread

7" Riser





# Stairs & Railings



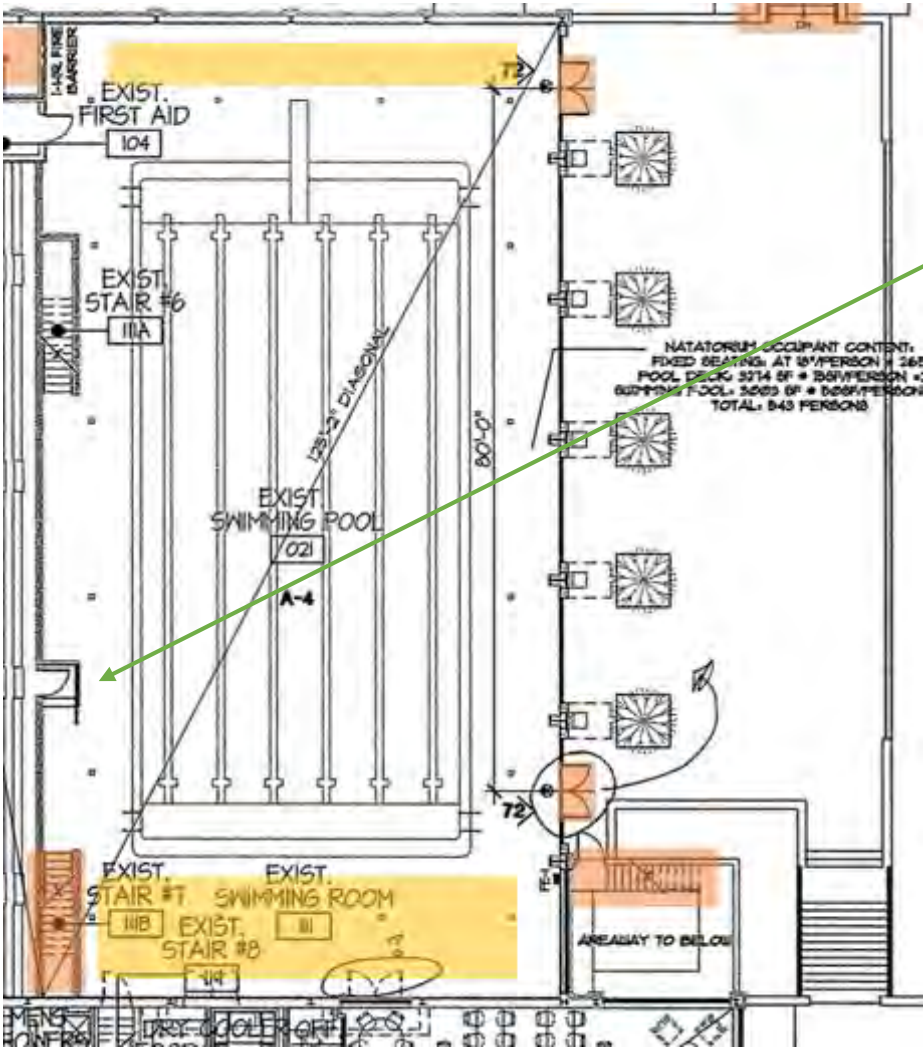
Allowed 36"-42" above finished floor. (42")

Guard rail at open corridor/landing when over 30" above floor below

4" max above floor

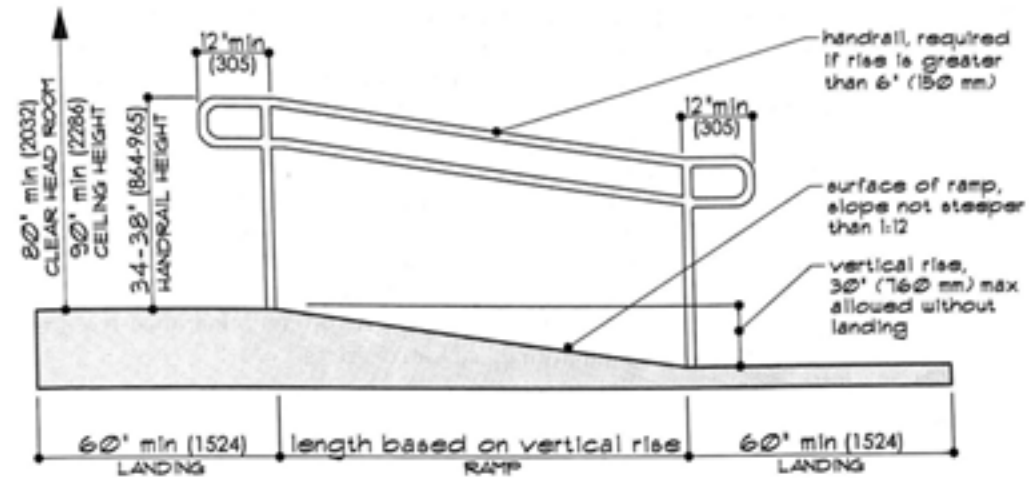
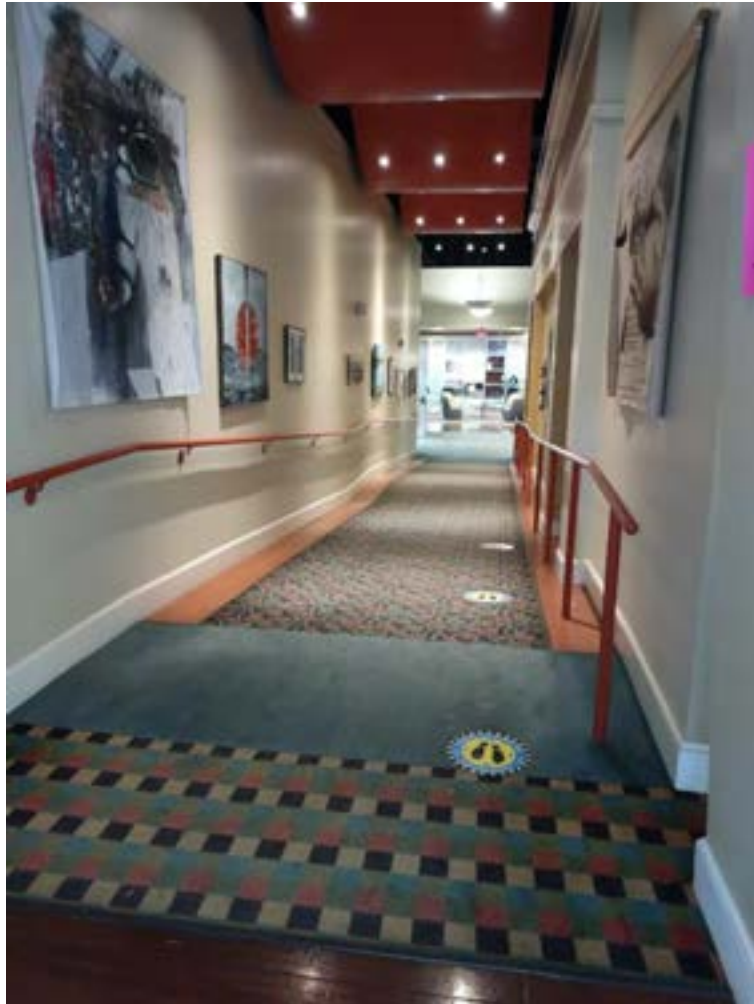
12" from step to end of handrail

# Diagonal Rule

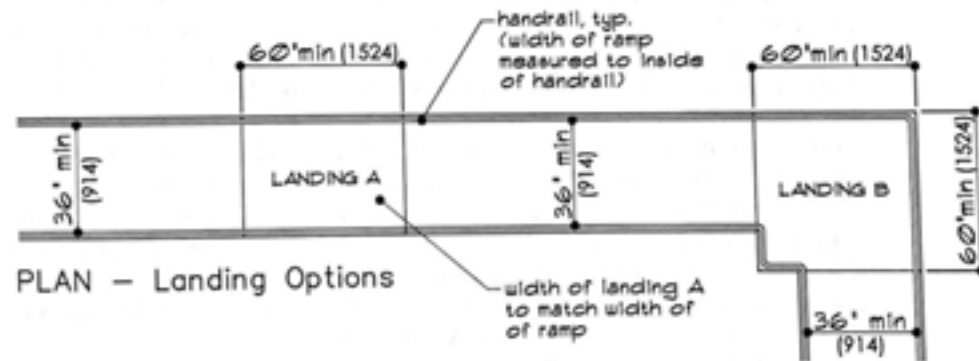


Exits are a third of the way  
Diagonal Distance for Entire Floor

# Ramp with Handrail



ELEVATION – Ramp with Handrail



PLAN – Landing Options