


6 + 7 Innovation Results for Maria Klein

Score for this quiz: **95** out of 100

Submitted Apr 15 at 2:57pm

This attempt took 220 minutes.

Submitted: Apr 15 at 2:57pm 

Question 1

16 / 16 pts

Ornament was controversial during the period we have described as "Innovation."

1. What is an argument against ornament?
2. Who made this argument?
3. **Please post an image and include name, date, style and designer**
4. What is an argument for ornament?
5. Who made this argument?
6. **Please post an image and include name, date, style and designer**
7. Who do you agree with?
8. Why?

Your Answer:

1. Those who oppose ornament say that the architect or designer acknowledges that their design lacks the "purity of line and perfection of proportion" and that they add ornamentation to distract from the flaws, according to Irving Gill in "The New Architecture of the West" (Modern Forerunners, Slide 15).

2. Irving Gill made this argument in in "The New Architecture of the West" in 1916 (Modern Forerunners, Slide 15).

3.



Assessment

Grade out of 100

95

Assignment Comments

[Download Submission Comments](#)



Casa Batlo, Barcelona, Spain, Antoni Gaudi 1904-1906, Style Art Nouveau

7-8. I agree with Gaudi's train of thought. I believe that ornament and decoration can emphasize the structure. Not only does ornament provide interest, but it also distinguishes certain styles from others. Each building provides a distinct point of view and perspective.



Submitted: Apr 15 at 2:57pm

Assessment

Grade out of 100

95

Assignment Comments

[Download Submission](#)
[Comments](#)

Question 2

3 / 3 pts

The Bauhaus was a famous art and design school in Germany. Which of these was NOT a goal of design education at the Bauhaus

- The students were required to study color theory
- The students were required to learn craft techniques
- The students were required to aim to design for mass production

Bauhaus

- The students were required to study color theory
- The students were required to learn craft techniques
- The students were required to aim to design for mass production
- The students were required to reference historic style characteristics

Correct!

Submitted: Apr 15 at 2:57pm



Assessment

Grade out of 100

95

Assignment Comments

[Download Submission](#)
[Comments](#)

Question 3

3 / 3 pts

Complex and multifaceted, Art Nouveau has many roots. Different designers create unique and innovative expressions. Which Art Nouveau designer referenced traditional building forms and relies on rectangular and square shapes, patterns of light and dark?

- Henry van de Velde
- Victor Horta
- Antoni Gaudi
- Charles Rennie Mackintosh

Correct!

Question 4

0 / 3 pts

What does this quotation mean?

“Whether it be the sweeping eagle in his flight or the open apple blossom...the drifting cloud...FORM EVER FOLLOWS FUNCTION AND THIS IS THE LAW.”

The Tall Office Building Artistically Considered
Louis H. Sullivan

CHARLES RICHIE MAGNUSON

Submitted: Apr 15 at 2:57pm

Question 4

0 / 3 pts

What does this quotation mean?

"Whether it be the sweeping eagle in his flight or the open apple blossom...the drifting cloud...FORM EVER FOLLOWS FUNCTION AND THIS IS THE LAW."

The Tall Office Building Artistically Considered
Louis H. Sullivan
Published 1896 .
Open Library OL24600425M

Assessment
Grade out of 100

95

Assignment Comments
[Download Submission](#)
[Comments](#)

It is important to use abstraction to understand form and function

Correct Answer

There is only one correct form for every type

Unanswered

The function of something is determined by its form

There is only one correct function for every type

Question 5

12 / 12 pts

Please match these significant contributors to the phrase that best describes them

Correct!

Antoni Gaudi

My architecture exp

Correct!

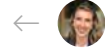
Gerrit Rietveld

My client wanted a l

Correct!

Walter Gropius

My architecture aim



Question 5

12 / 12 pts

Please match these significant contributors to the phrase that best describes them

Correct!

Antoni Gaudi

My architecture exp ▼

Correct!

Gerrit Rietveld

My client wanted a l ▼

Correct!

Walter Gropius

My architecture aim ▼

Correct!

Mies Van Der Rohe

Less is More ▼

Correct!

Victor Horta

My interiors express ▼

Correct!

Otto Wagner

If a building is impra ▼

Submitted: Apr 15 at 2:57pm



Assessment

Grade out of 100

95

Assignment Comments

[Download Submission Comments](#)

Question 6

12 / 12 pts

Please match these styles with the phrase that best describes them

Correct!

Art Nouveau

Decorative, and sen ▼

Correct!

De Stijl

My goal is to reduce ▼

Correct!

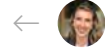
Bauhaus

I want to unite art ar ▼

Correct!

Constructivism

I am Rational. I valu ▼



Question 6

12 / 12 pts

Please match these styles with the phrase that best describes them

Correct!

Art Nouveau

Decorative, and sen

Correct!

De Stijl

My goal is to reduce

Correct!

Bauhaus

I want to unite art ar

Correct!

Constructivism

I am Rational. I valu

Correct!

Chicago School

I am dependent on I

Correct!

Werkbund

Form, function and :

Submitted: Apr 15 at 2:57pm



Assessment

Grade out of 100

95

Assignment Comments

[Download Submission](#)
[Comments](#)

Question 7

3 / 3 pts

The Innovation Module covers design developments in a variety of countries and has multiple expressions. But there are societal conditions that unite them all. Which of these social conditions unites them all?

All were experiencing a nostalgia for the past

All were interested in reviving their own styles

Correct!

All were experiencing rapid industrialization

All were experiencing a negative reaction to industrialization


Question 7

3 / 3 pts

The Innovation Module covers design developments in a variety of countries and has multiple expressions. But there are societal conditions that unite them all. Which of these social conditions unites them all?

- All were experiencing a nostalgia for the past
- All were interested in reviving their own styles
- All were experiencing rapid industrialization
- All were experiencing a negative reaction to industrialization

Correct!

Submitted: Apr 15 at 2:57pm 

Assessment

Grade out of 100

95

Assignment Comments

[Download Submission](#)
[Comments](#)

Question 8

3 / 3 pts

Which style flourished before World War I?

- De Stijl
- Constructivism
- Bauhaus
- Art Nouveau

Correct!

Question 9

3 / 3 pts

Which style flourished during World War I?

- Art Nouveau
- Constructivism


Question 8

3 / 3 pts

Which style flourished before World War I?

- De Stijl
- Constructivism
- Bauhaus
- Art Nouveau

Correct!

Submitted: Apr 15 at 2:57pm 

Assessment

Grade out of 100

95

Assignment Comments

[Download Submission](#)
[Comments](#)

Question 9

3 / 3 pts

Which style flourished during World War I?

- Art Nouveau
- Constructivism
- Bauhaus
- De Stijl

Correct!

Question 10

3 / 3 pts

Which styles were negatively impacted by the intervention of the government who viewed them as decadent and unpatriotic?

- All the styles discussed in the Innovation Module
- Bauhaus and Constructivism
- Bauhaus and De Stijl
- Constructivism and Werkbund

Correct!

A student made this model. What style do you think inspired this student?



- Werkbund
- Bauhaus
- Constructivism
- De Stijl

Correct!

Submitted: Apr 15 at 2:57pm



Assessment

Grade out of 100

95

Assignment Comments

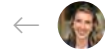
[Download Submission](#)
[Comments](#)

Question 12

3 / 3 pts

The kids had a great time playing on this! What style is it?





The kids had a great time playing on this! What style is it?



- Jugendstil
- Chicago School
- Wiener Werkstaette
- Art Nouveau

Correct!

Submitted: Apr 15 at 2:57pm



Assessment

Grade out of 100

95

Assignment Comments

[Download Submission Comments](#)

Question 13

3 / 3 pts

What style is this?



Question 13


3 / 3 pts

What style is this?



- De Stijl
- Bauhaus
- Constructivism
- Werkbund

Correct!

Submitted: Apr 15 at 2:57pm 

Assessment

Grade out of 100

95

Assignment Comments

[Download Submission](#)
[Comments](#)

Question 14

3 / 3 pts


While the styles in the Innovation Module build on the theories of

Go Shopping!


Please find:

1. An **ORIGINAL** Tiffany Lamp
2. Date
3. Place you found it
4. Price
5. 2 STYLE CHARACTERISTICS THAT IDENTIFY IT AS TIFFANY
6. Image
7. A REPRODUCTION Tiffany Lamp
8. Date
9. Place you found it
10. Price
11. Why it is not authentic
12. Image

Your Answer:

1. <https://www.chairish.com/product/6128885/edit-1910s-tiffany-studios-acorn-table-lamp> 
(<https://www.chairish.com/product/6128885/edit-1910s-tiffany-studios-acorn-table-lamp>).
2. Circa 1910
3. Chairish.com
4. \$28,000
5. The lamp is circa 1910 which is in the time of Tiffany Studios (1902-1932).
- 6.



Submitted: Apr 15 at 2:57pm 

Assessment

Grade out of 100

95

Assignment Comments

[Download Submission](#)
[Comments](#)

I found these chairs on Wayfair. Who was the original designer of chairs like these?



Mcbaine Side Chair (Set of 4)
See More by Orren Ellis

Rated 4.8 out of 5 stars.
4.8

11 Reviews

\$409.99(\$102.50per item)\$559.9927% Off
On Sale


Otto Wagner

Mies van der Rohe

Marcel Breuer

Walter Gropius

Correct!

Submitted: Apr 15 at 2:57pm 

Assessment

Grade out of 100

95

Assignment Comments

[Download Submission](#)
[Comments](#)

Question 19

3 / 3 pts

In what city was the Skyscraper born?

Berlin

New York


Question 19

3 / 3 pts

In what city was the Skyscraper born?

- Berlin
- New York
- Paris
- Chicago

Correct!

Submitted: Apr 15 at 2:57pm 

Assessment

Grade out of 100

95

Assignment Comments

[Download Submission](#)
[Comments](#)

Question 20

3 / 3 pts

Of all the ideas, styles and people in the Innovation Module which inspires you the most?

Why?

Please include the date(s)

Your Answer:

Of all of the people from the Innovation Module, Ludwig Mies van der Rohe (1886-1969) is particularly inspiring to me. His philosophy of "God is in the details" really resonates with me. I regularly think of the quote from Charles Eames "The details are not details. They make the design." An attention to detail is what separates great design from mediocre design. The Tugendhat House (1930) in Czechoslovakia is a perfect example of this. The decoration is relatively simple. but it is brought to life with an impeccable attention to detail.

Quiz Score: **95** out of 100