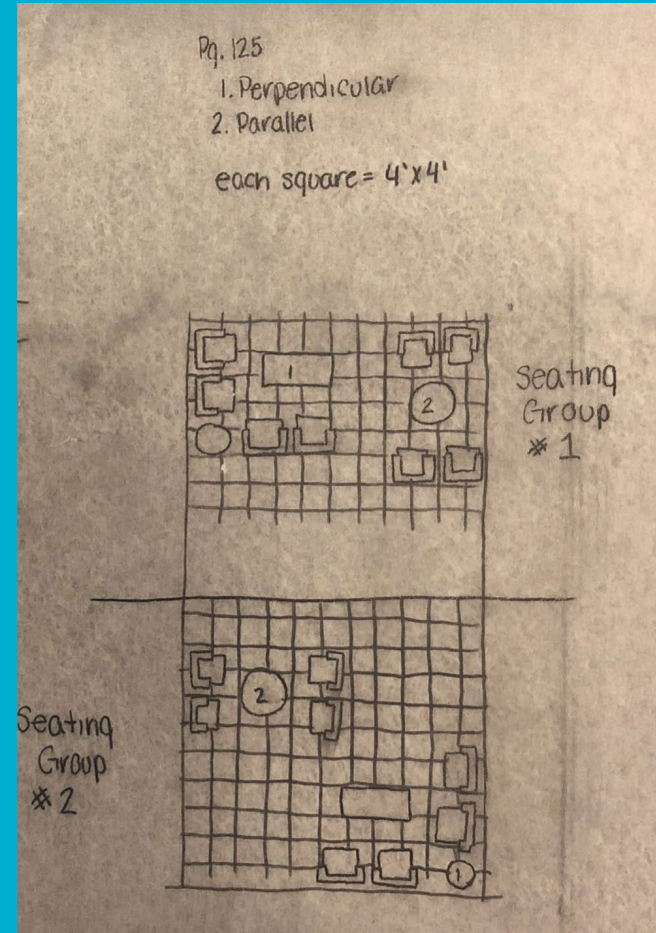
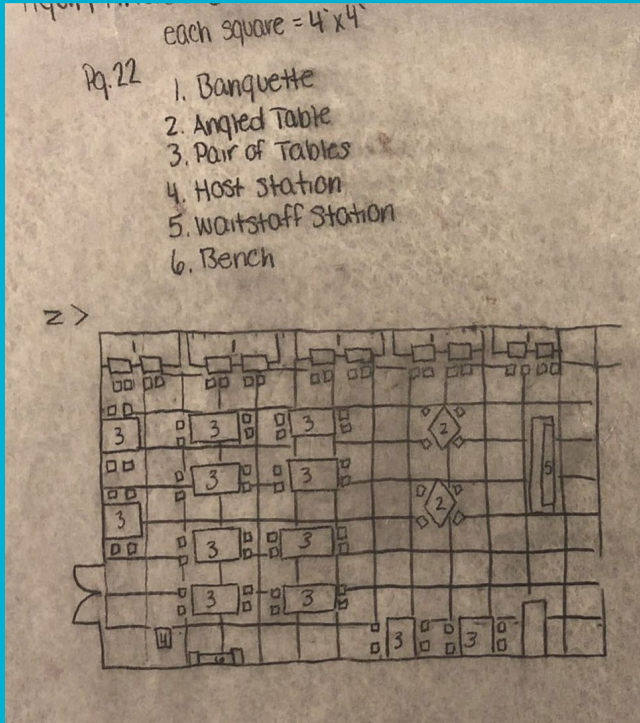


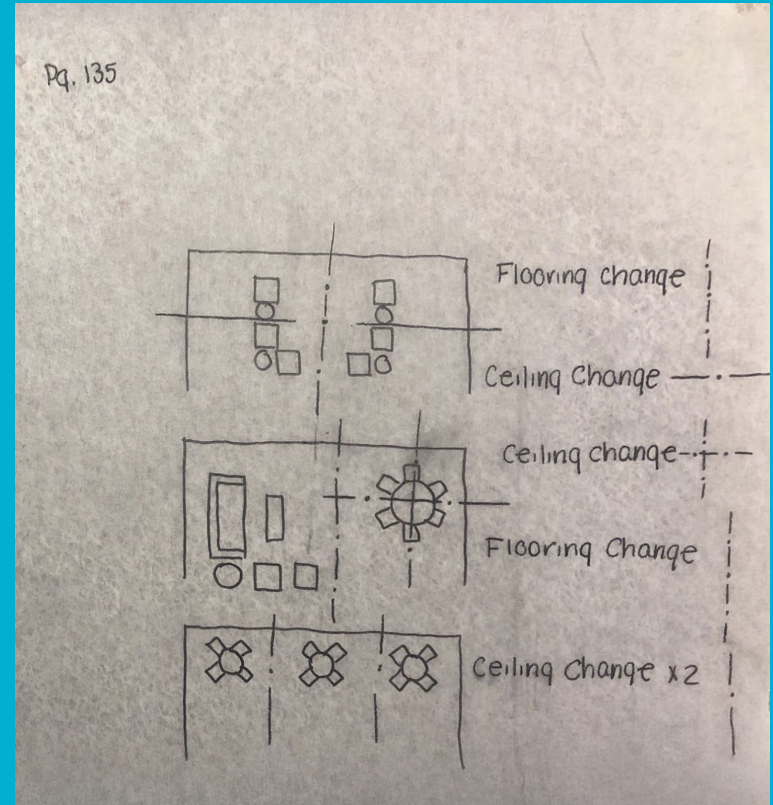
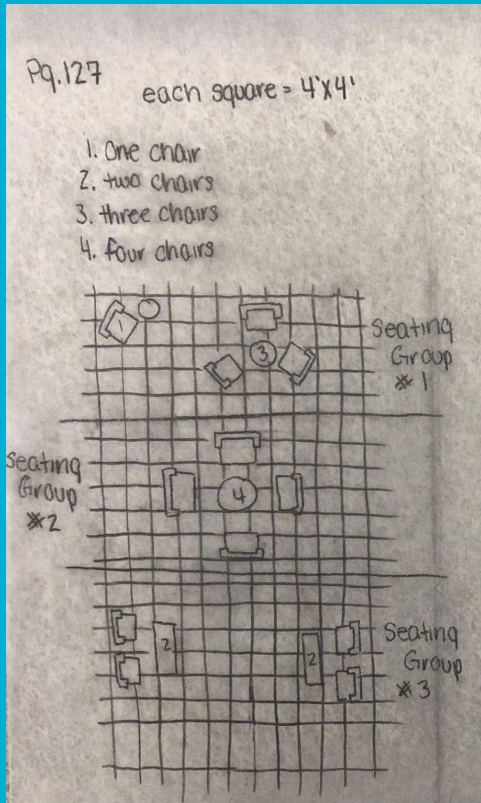
The Interior Plan Worksheets

Ryan Finazzo

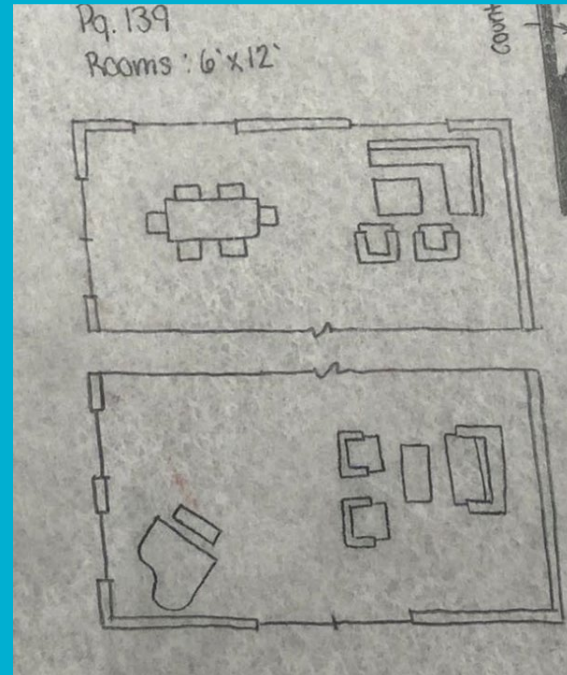
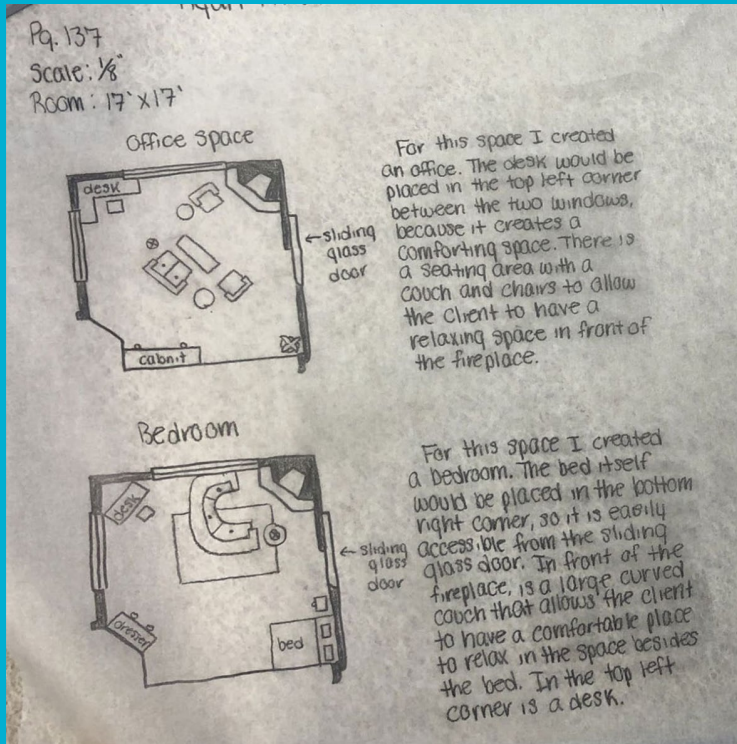
Pages 22 and 125



Pages 127 and 135

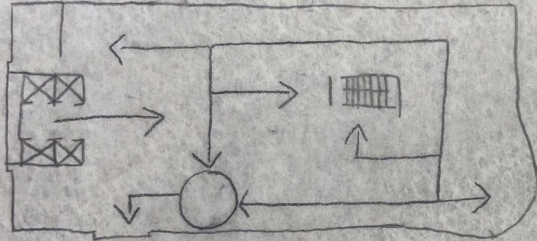


Pages 137 and 139

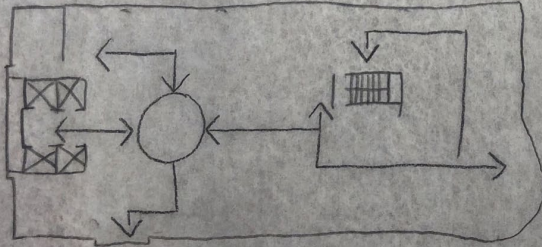


Pages 85 and 87

Pg. 85
Circulation

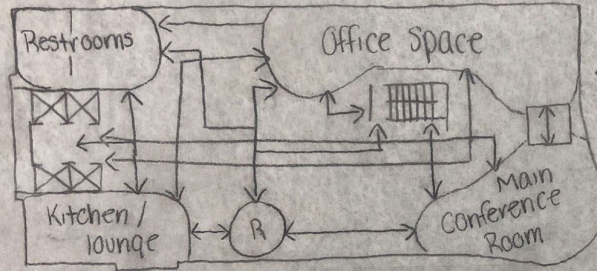


- reception area is located on the bottom wall so there is easy circulation to all points of the office space

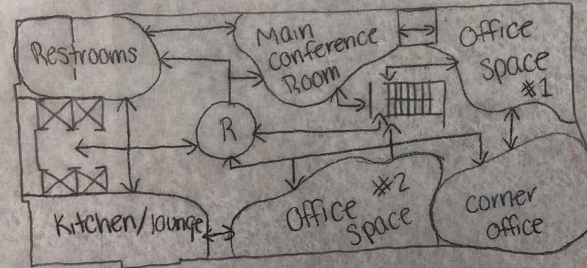


- reception area is located towards the middle of the space so the circulation flows around it

Pg. 87 Solids and Voids

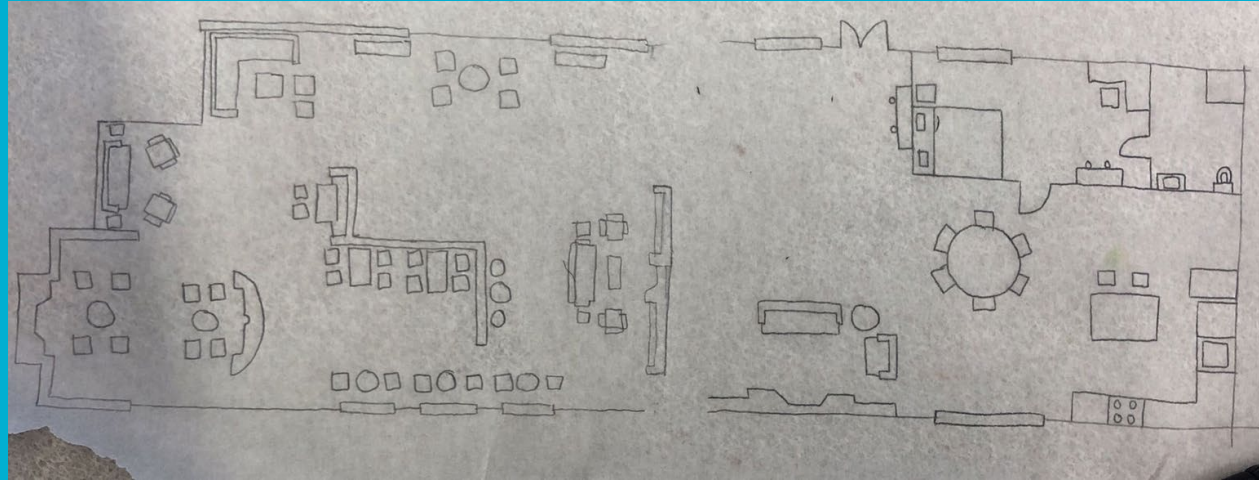
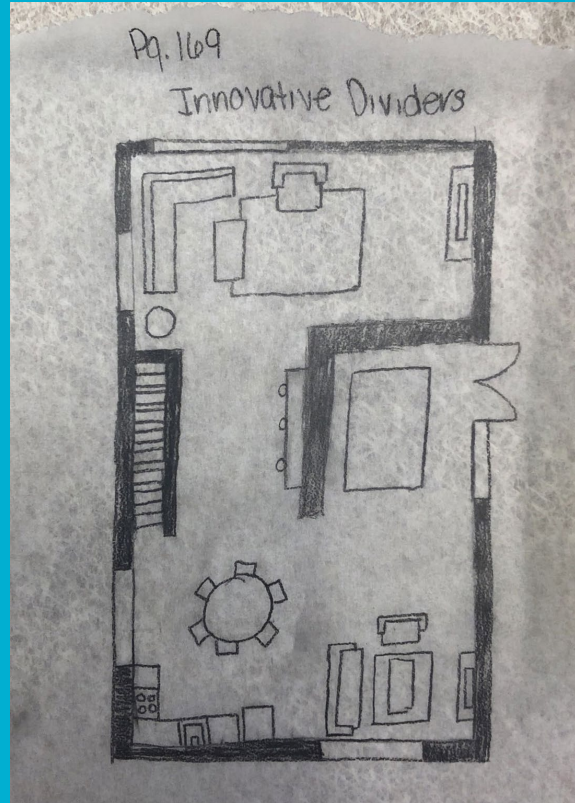


- restrooms and kitchen are closest to reception
- office space is close to stairs
- conference room is attached to office space with a walkway
- enough space to allow area to feel open with walk room

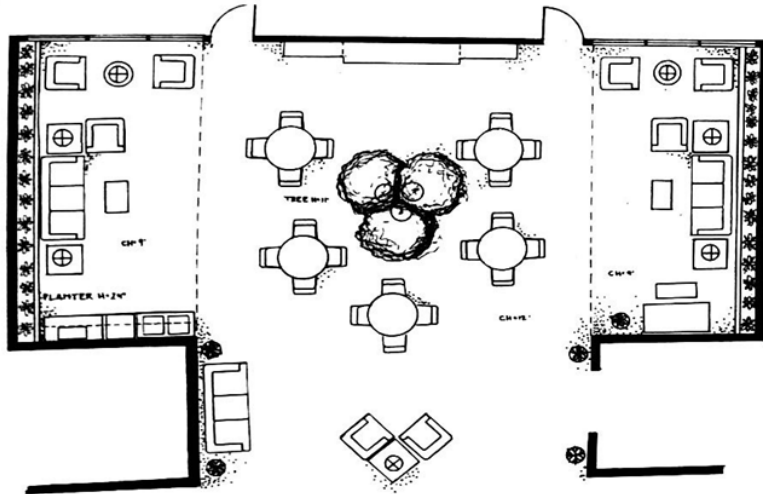


- restrooms and kitchen are closest to reception
- corner office is in between both office spaces
- office space #1 and the conference room are connected by a walkway
- can easily get from one space to the next

Pages 169 and 175

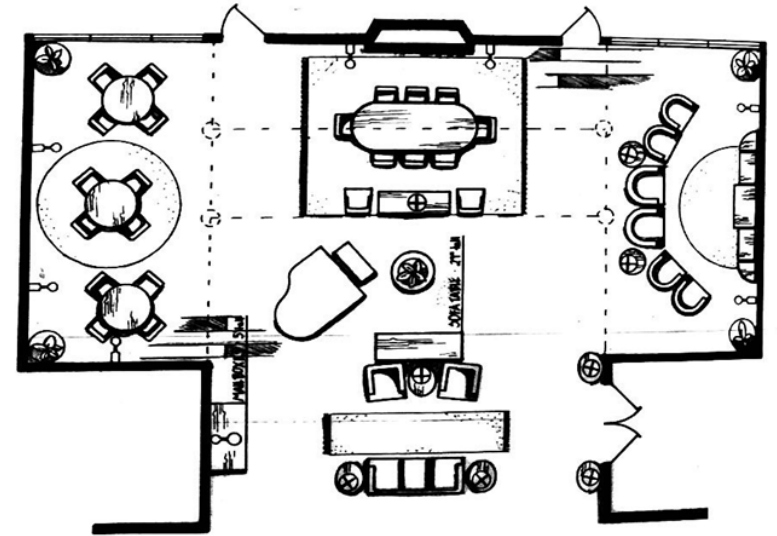


Page 146: Gathering Room Analysis



Scheme 1

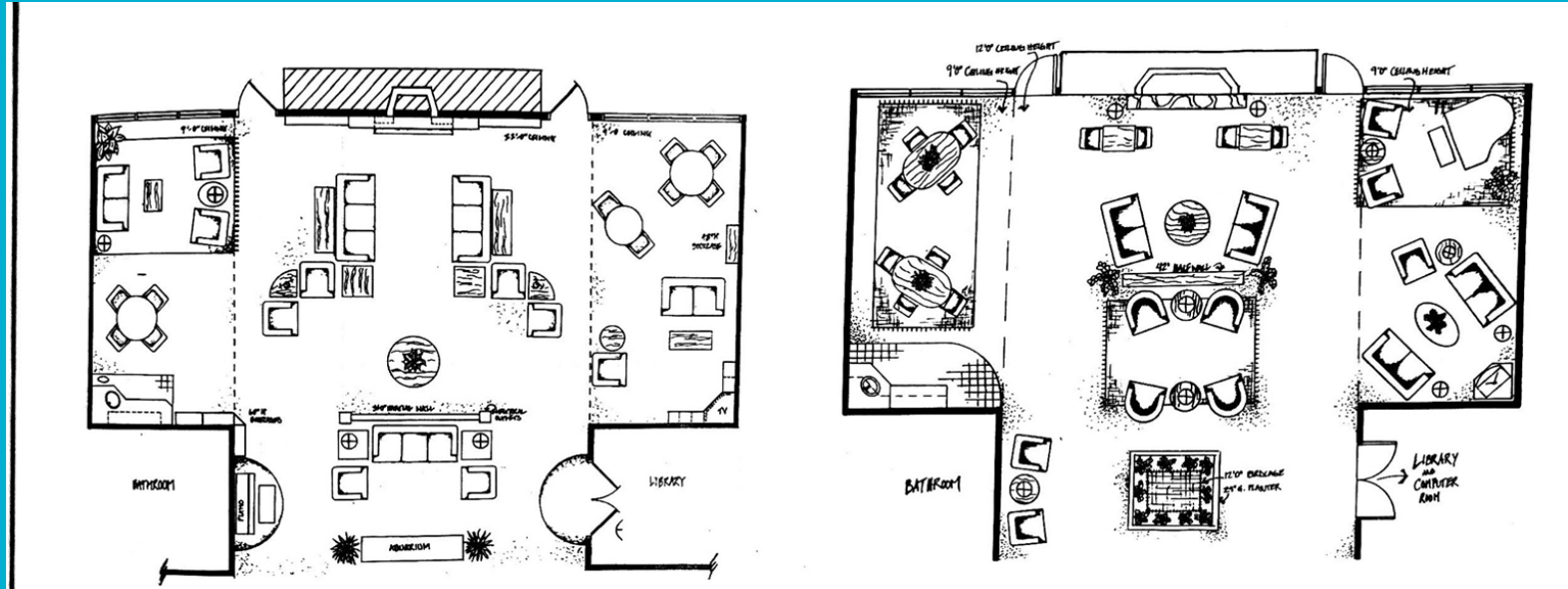
The space shown gives a center of multiple tables that provides a meeting place. The two identical rooms on the left and right sides of the space allows for a comfortable and relaxing space for people.



Scheme 2

The space shown seems to be a restaurant. The front of the space is a small sitting area with a couch and two chairs, while in the middle of the space there is a piano that allows for acoustics to travel to every space of the room. On the left there are three large tables and on the right there is a bar that is made for a more social environment.

Page 147: Gathering Room Analysis



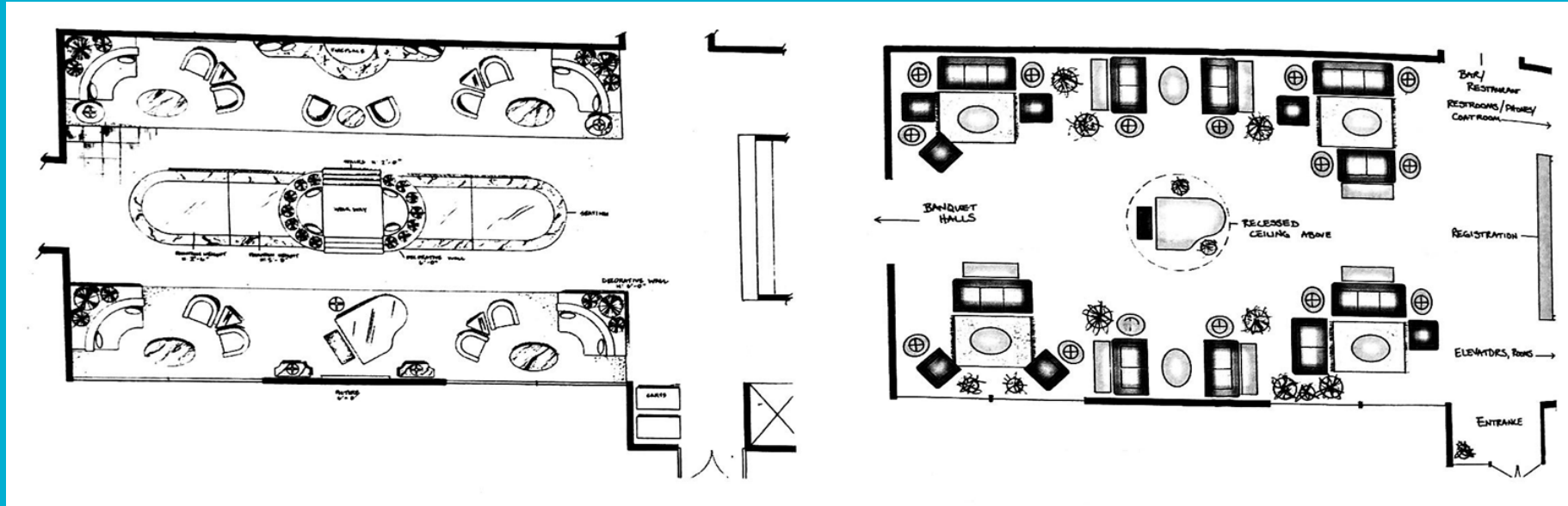
Scheme 3

The space provided is a gathering space with a fireplace on the top wall that creates a comfortable place to relax. On the left and right sides of the room there are different rooms made for studying. On the lower right there is an entrance to a library with a bathroom across from it.

Scheme 4

This space is similar to the layout of the previous scheme, but in this space there has become more places for people to study and relax.

Page 148: Hotel Lobby Critique



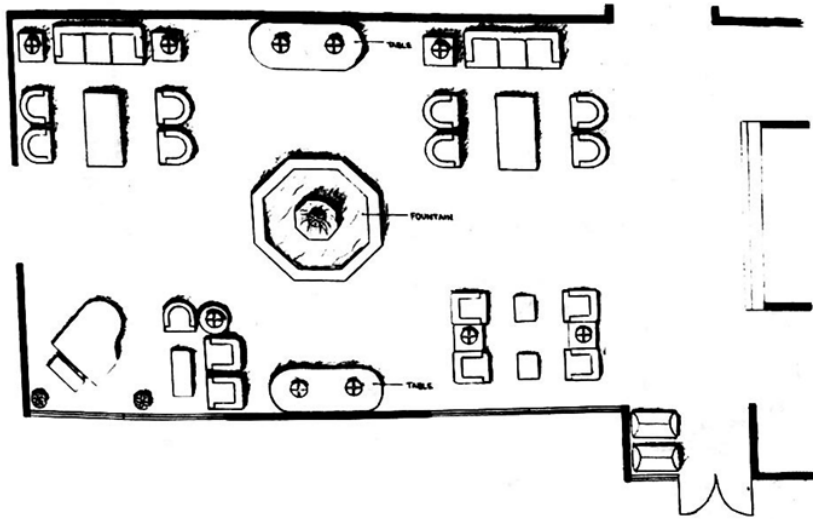
Scheme 1

The entrance to this space is on the right and from that there is a flow to the left. In the middle people will be stopped with places to sit and relax and a piano. The center allows for an extra walkway with a small bridge going over the fountain-like structure.

Scheme 2

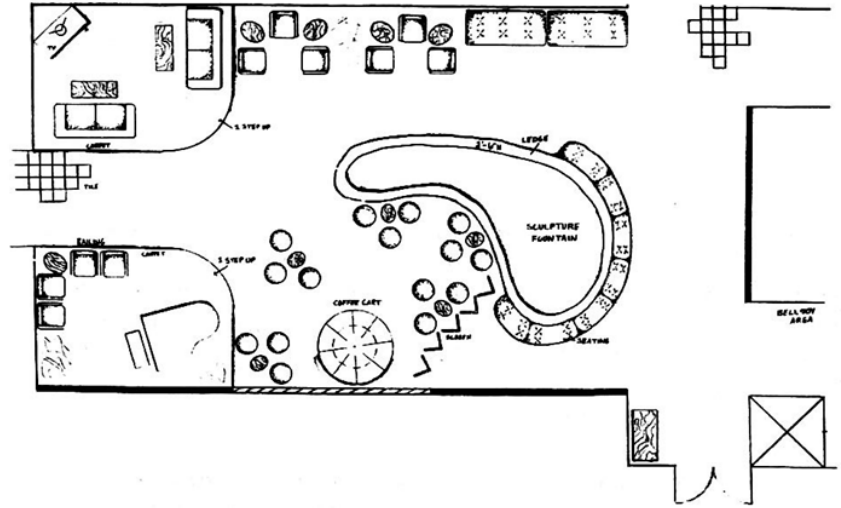
From the entrance on the right, people are met with a piano in the center of the space. Around the piano there are spaces for people to spread out and relax. There is a flow of pieces grouped together.

Page 149: Hotel Lobby Critique



Scheme 3

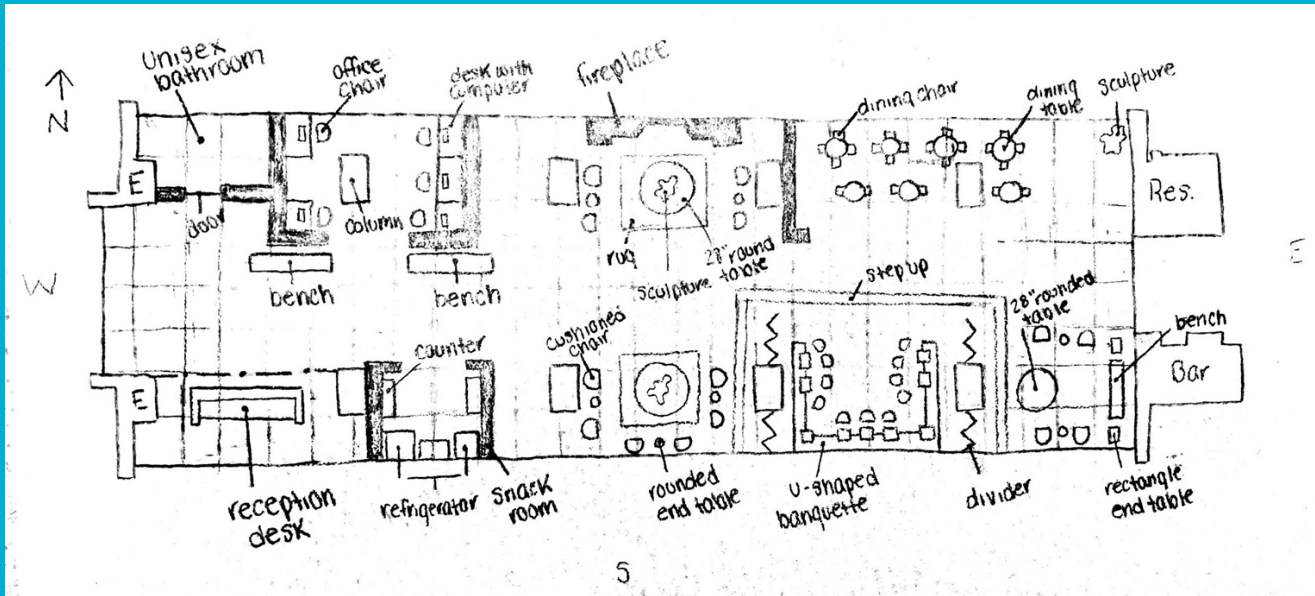
With the entrance on the bottom right, it allows for people to move freely. The center of the space provides a fountain that will point someone to any direction of the room. Both sides of the seating areas are almost identical with a piano being in the bottom left corner.



Scheme 4

This space provides more restricted flow of movement. With the large fountain in the middle of the space there is less space for people to move around it. There is less seating areas for people to relax. On the top left corner there is a small seating area, and on the bottom left there is a piano.

Final: Hotel Lobby



- Scale: $\frac{1}{8}'' = 1' = 0''$ (divide in half)
- Each square is 2' on the $\frac{1}{8}''$ scale
- # of benches: 3
- # of chairs: 52
- # of U-shaped banquettes: 1

Scale: $\frac{1}{8}'' = 1' = 0''$
(divide in half)

* each square is 2' on $\frac{1}{8}''$ scale

West Wall
• Entrance
East wall
• restaurant
• bar service } Entrance

What's Needed

- ✓ path to open areas
- ✓ seating
- ✓ areas close to restaurant
- ✓ circulation routes must be 5' wide
• secondary route could be 3' wide

Need to Add

- ✓ interior elements
 - dividers
 - mirrors
 - art
- ✓ furniture provided
- ✓ long rectangle bench
- ✓ small rectangle end tables
- ✓ large round circle coffee table
 - 28" high table
- ✓ flooring changes (1)
 - lighter line
- ✓ ceiling change (1)
 - dashed line

