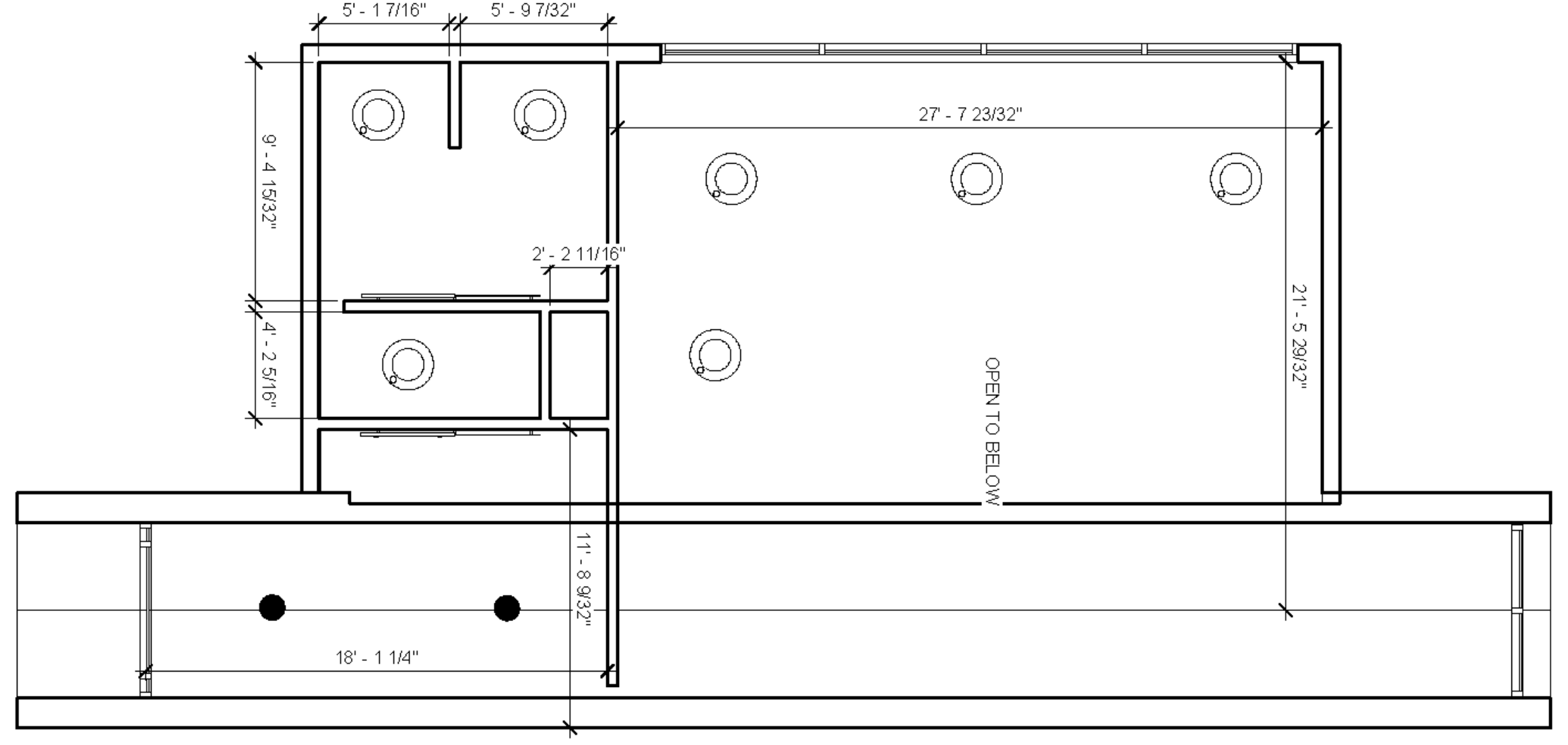
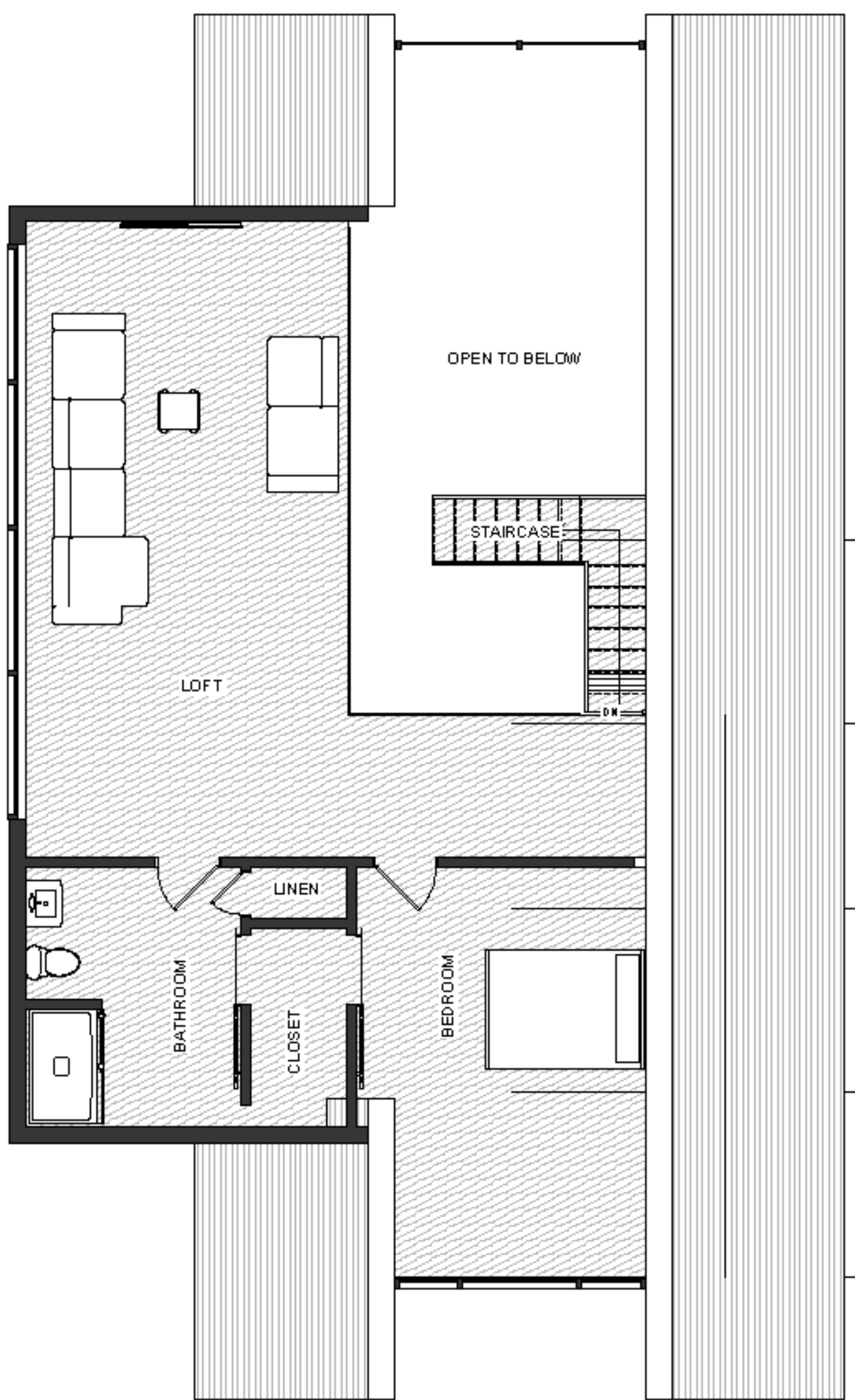


Reflected Ceiling Plan Level One

N.T.S.

Completed Floor Plan Level One

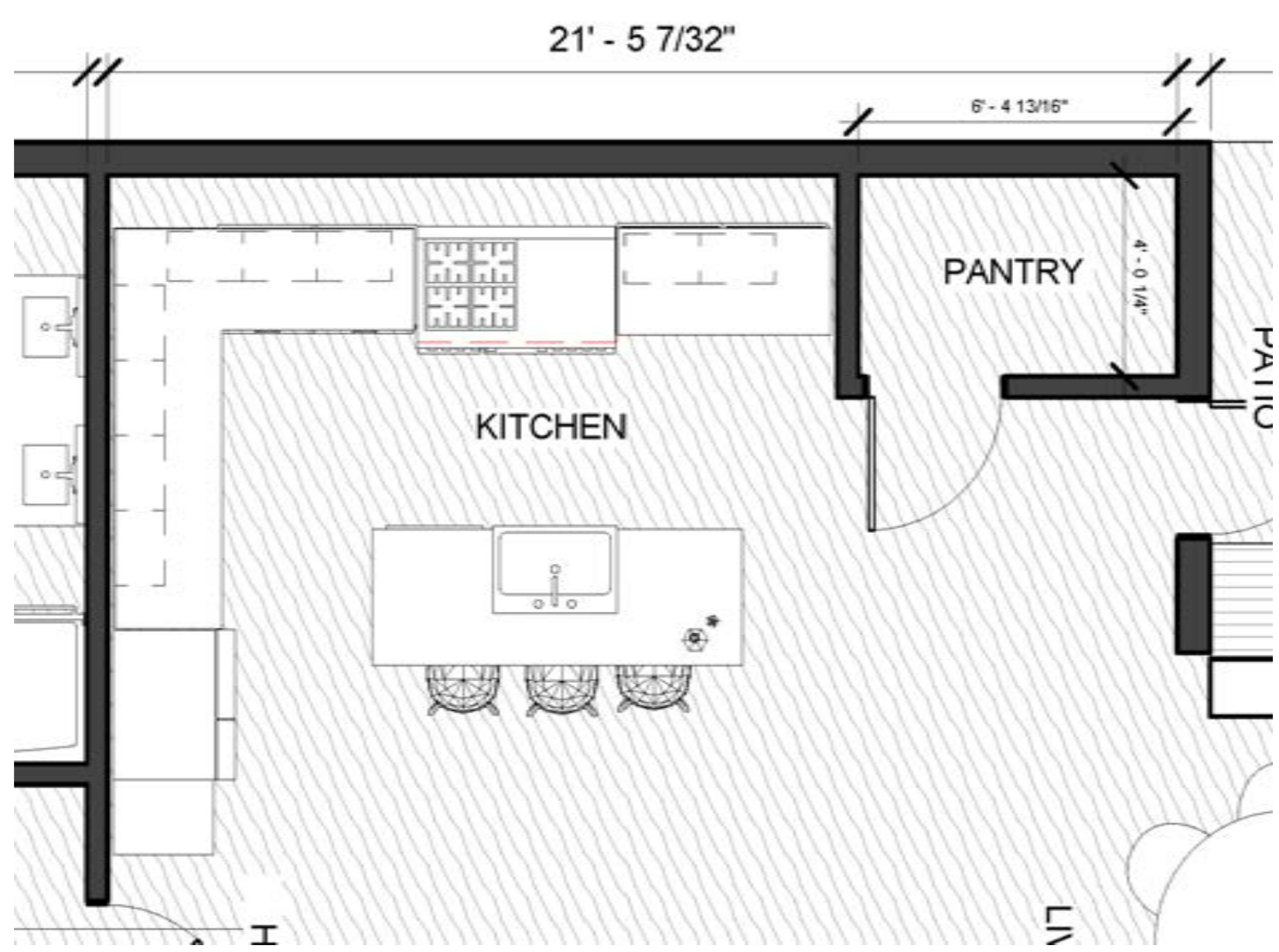
N.T.S.



Reflected Ceiling Plan Level Plan

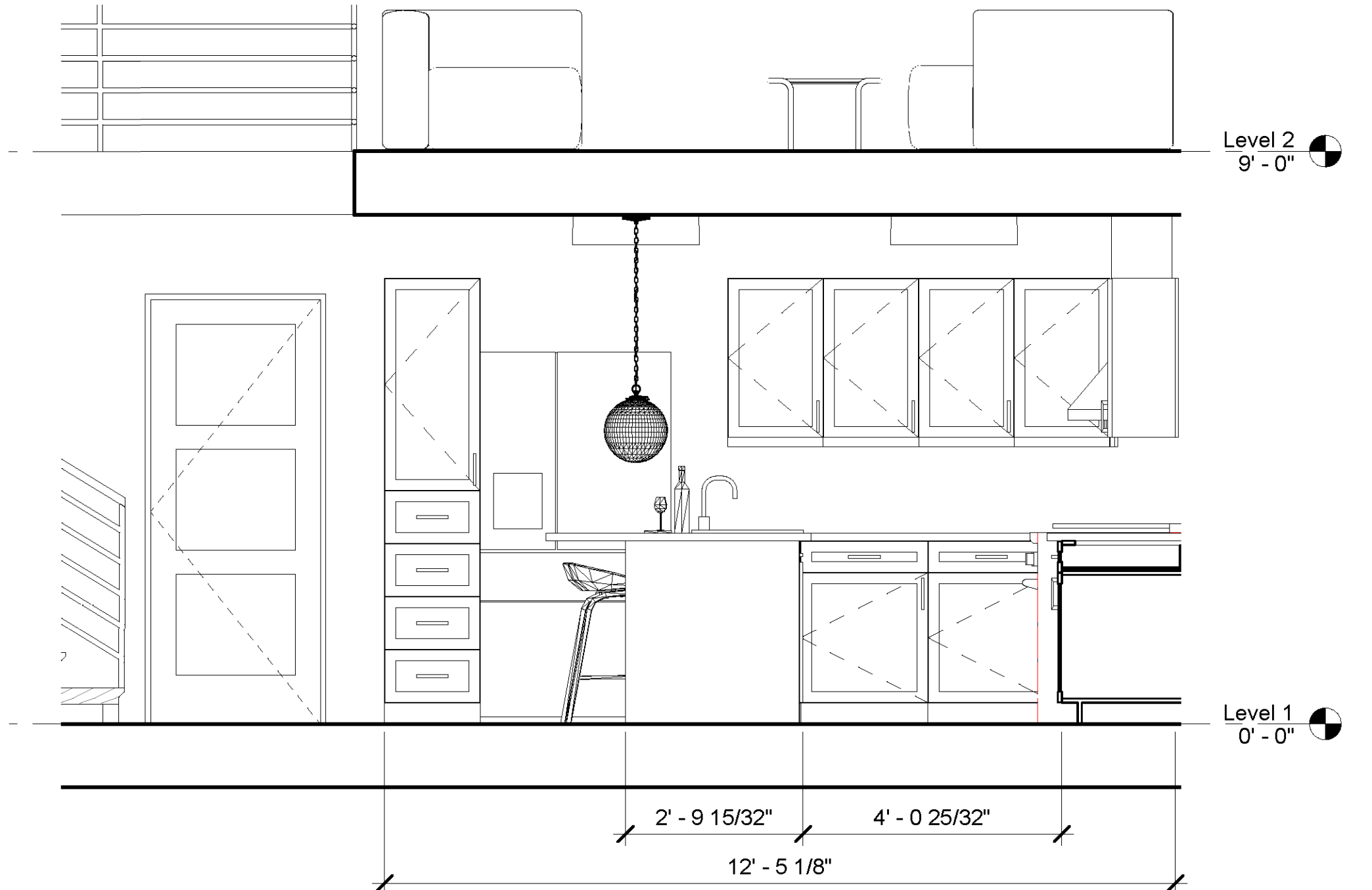
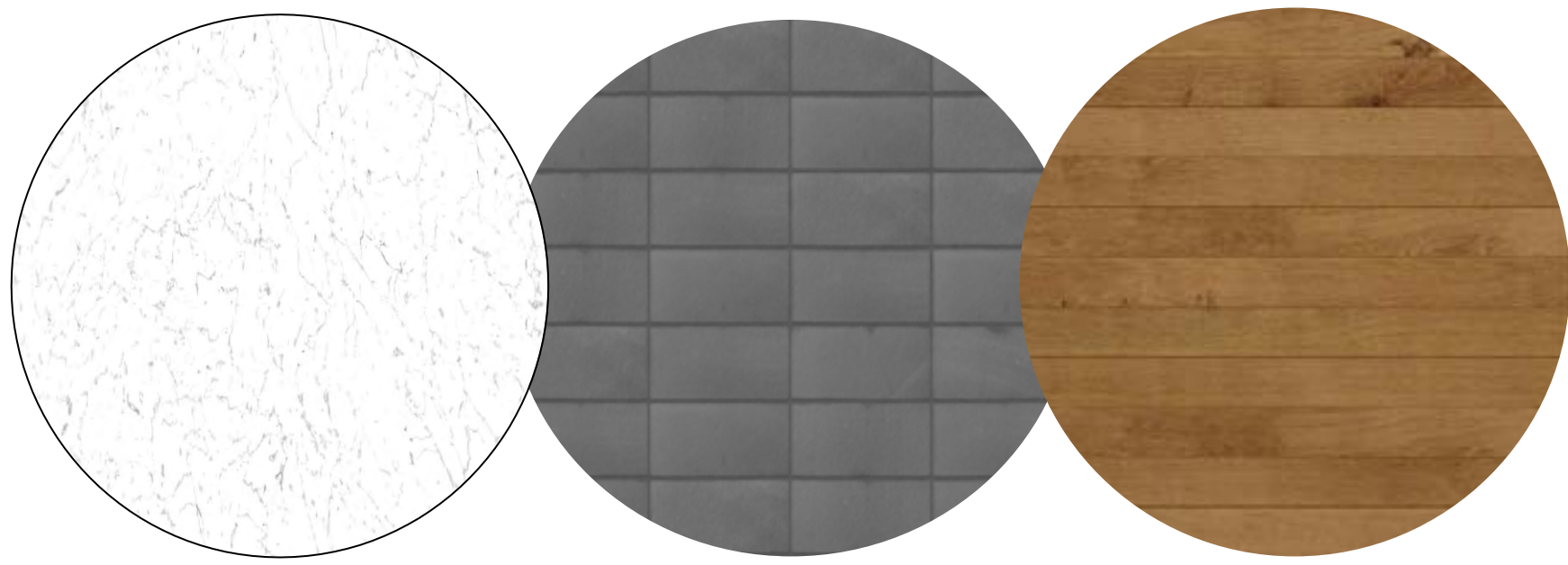
Completed Floor Plan Level Two





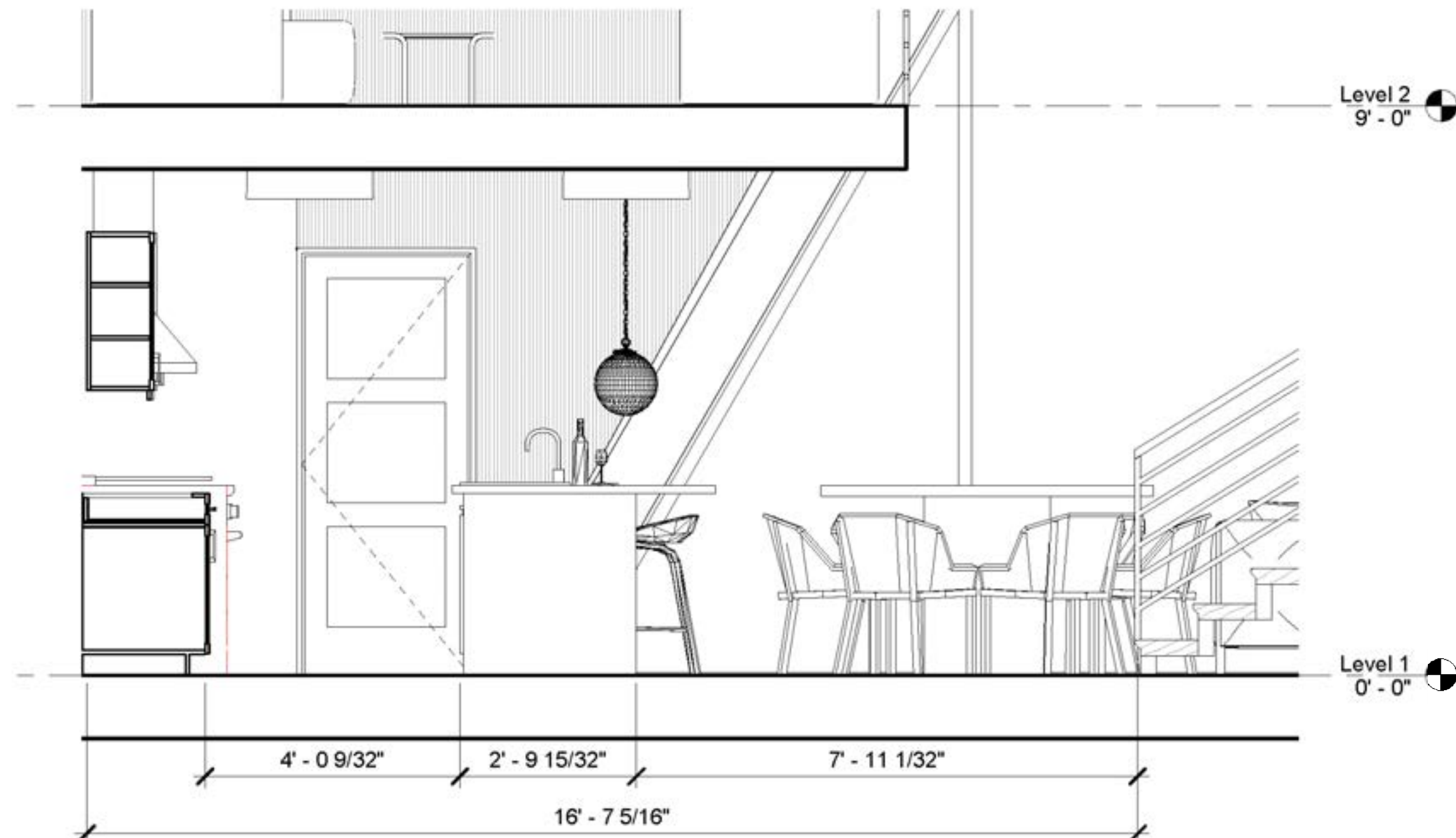
Enlarged Kitchen Floor Plan

N.T.S.



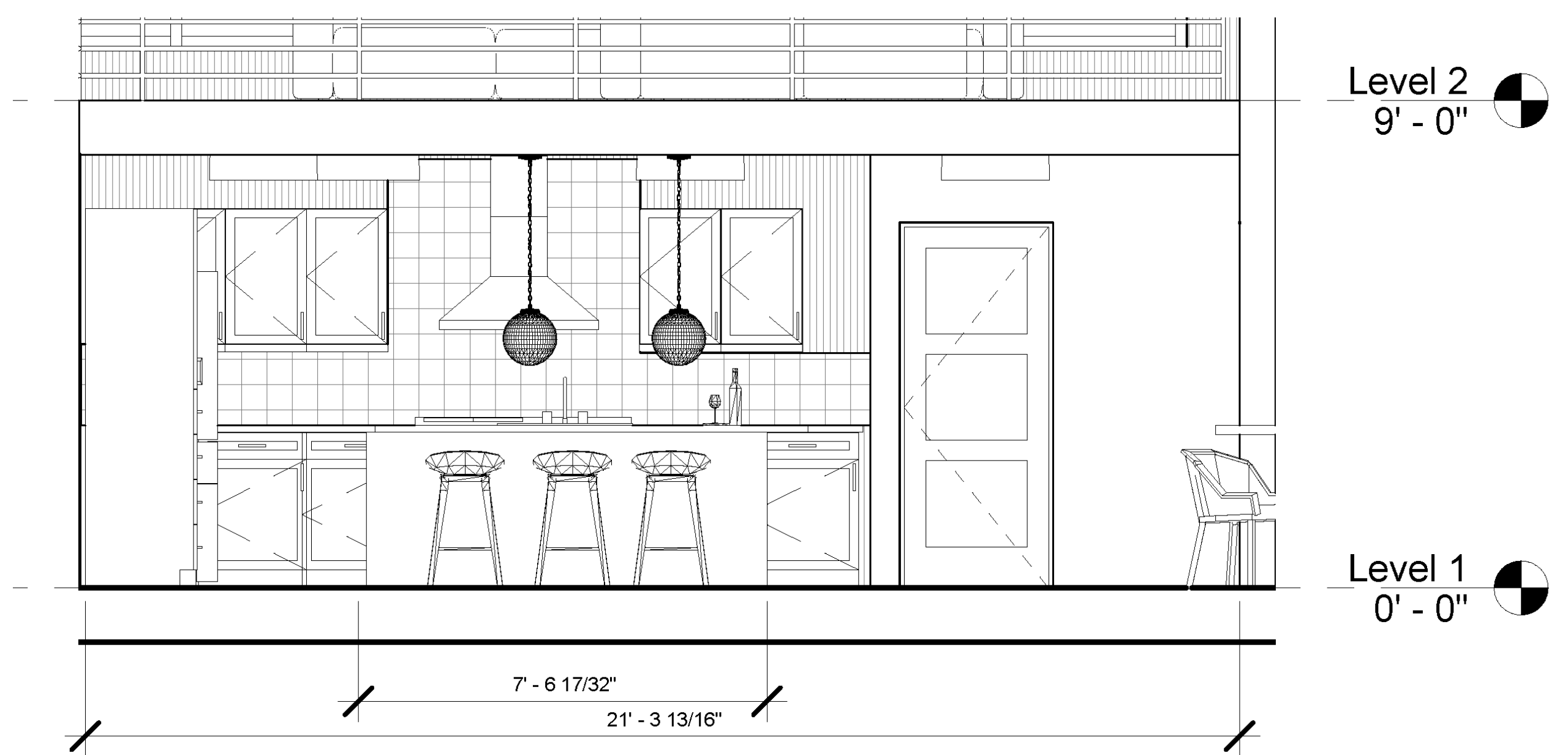
Kitchen Elevation South Wall

N.T.S.



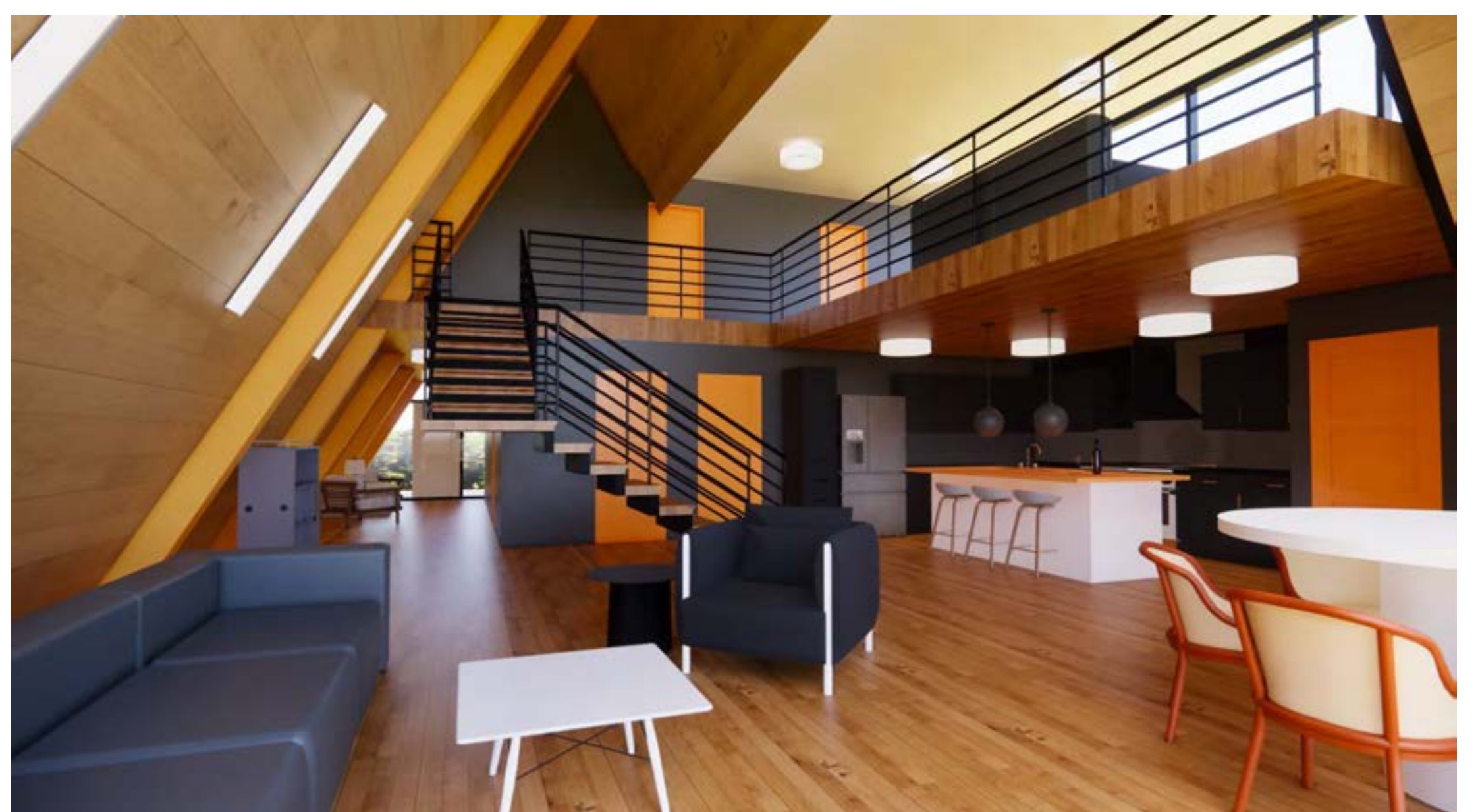
Kitchen Elevation North Wall

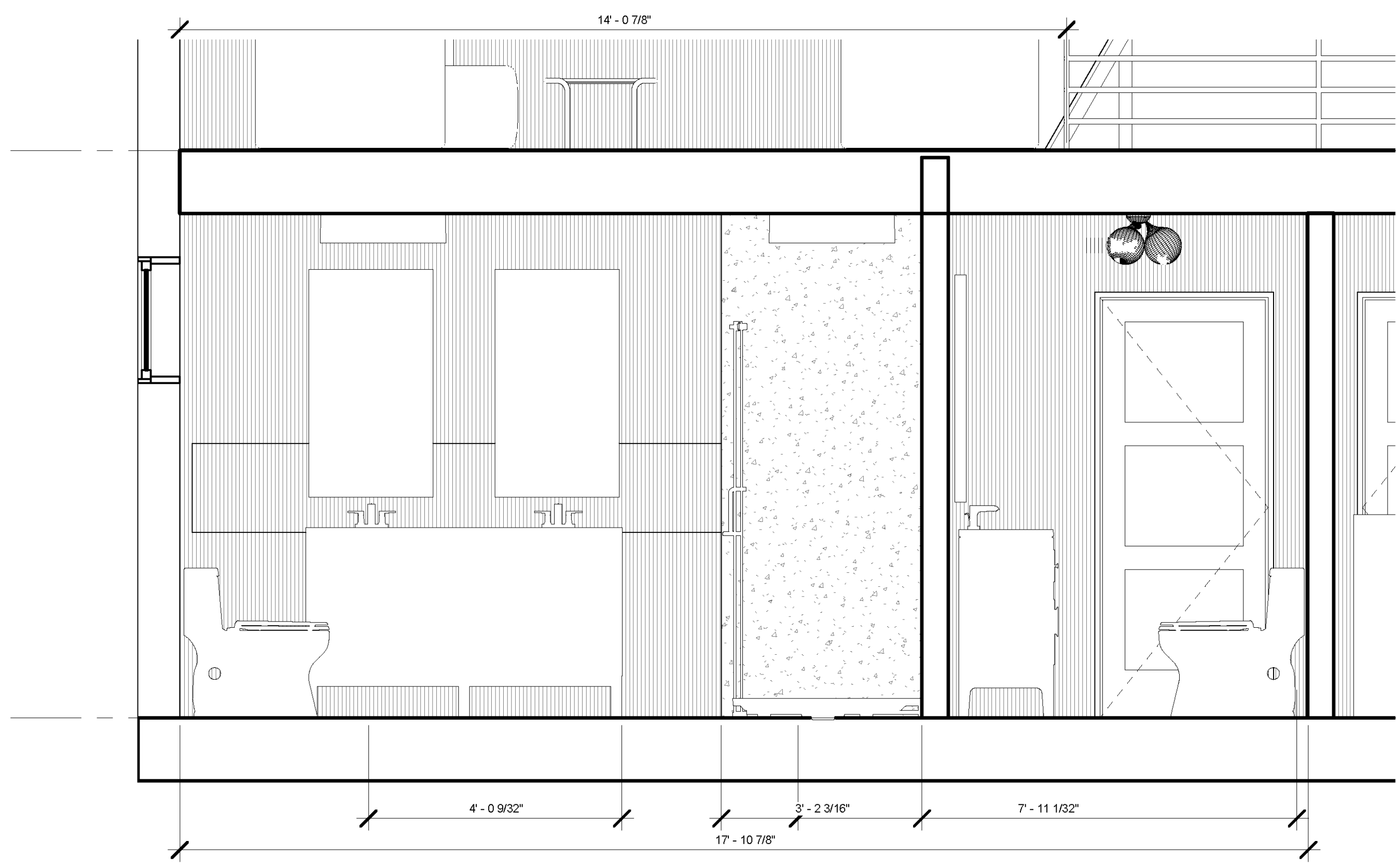
N.T.S.



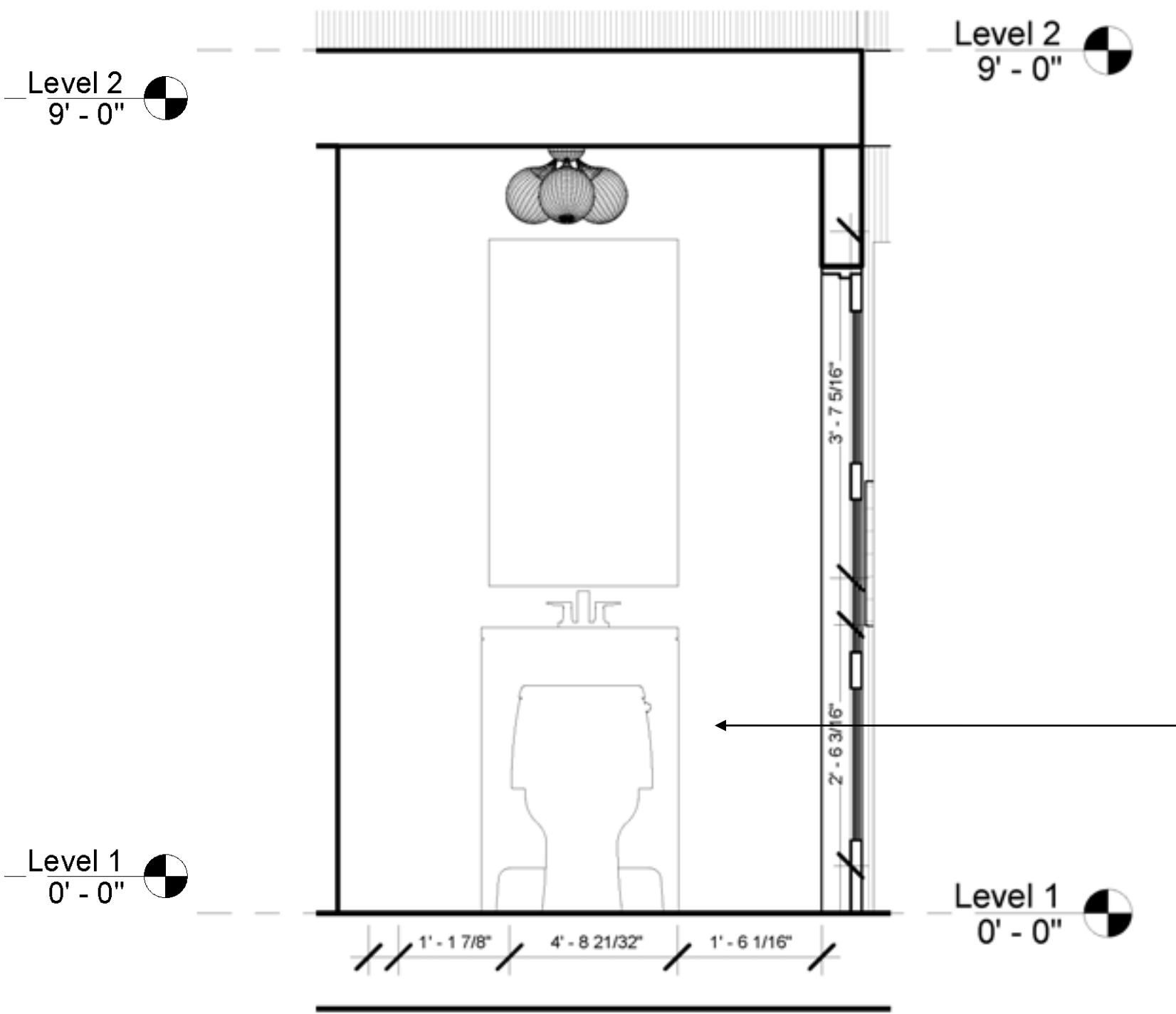
Kitchen Elevation Long Side

N.T.S.

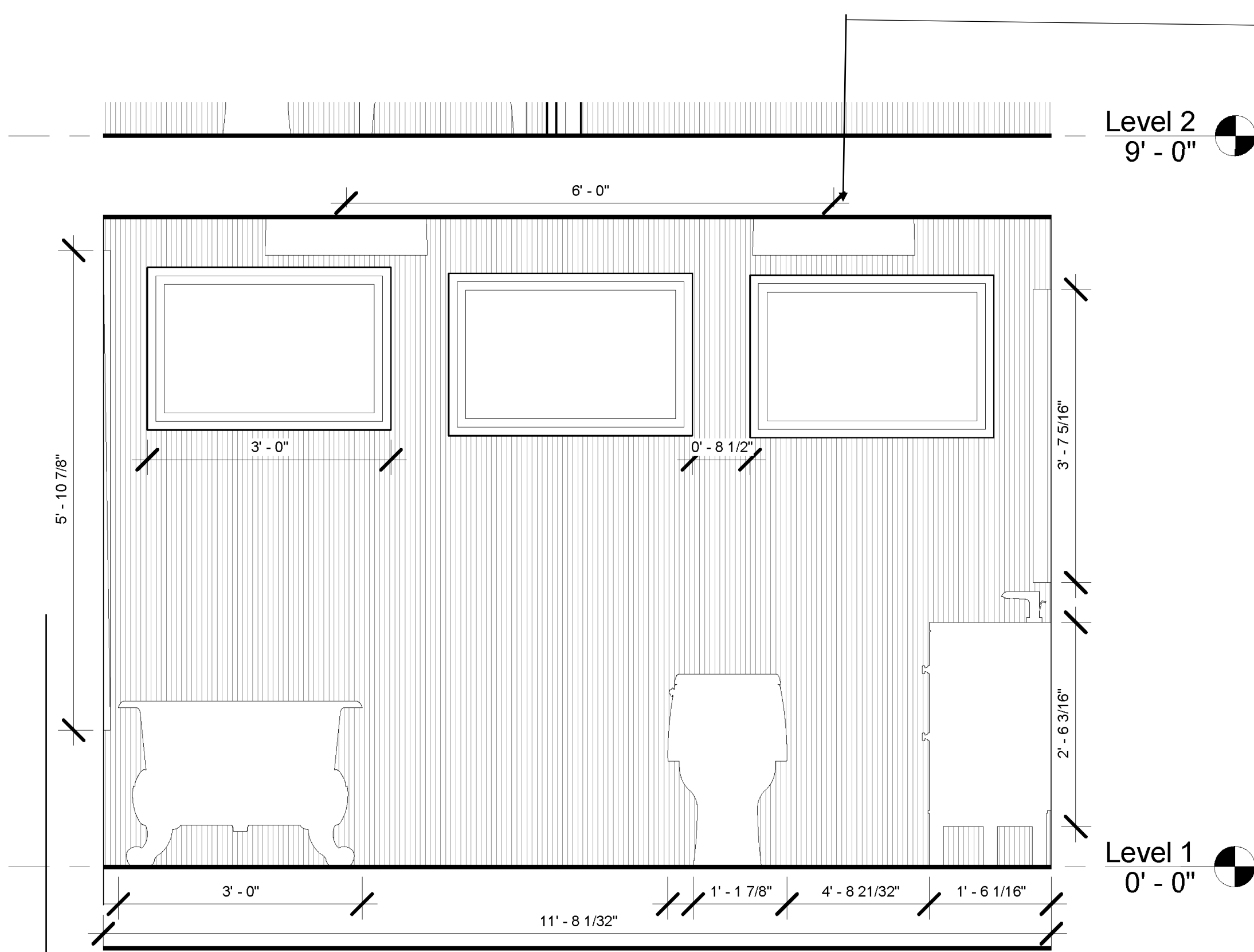




Master Bath and Half Bath Elevation N.T.S.



Half Bath Elevation N.T.S.

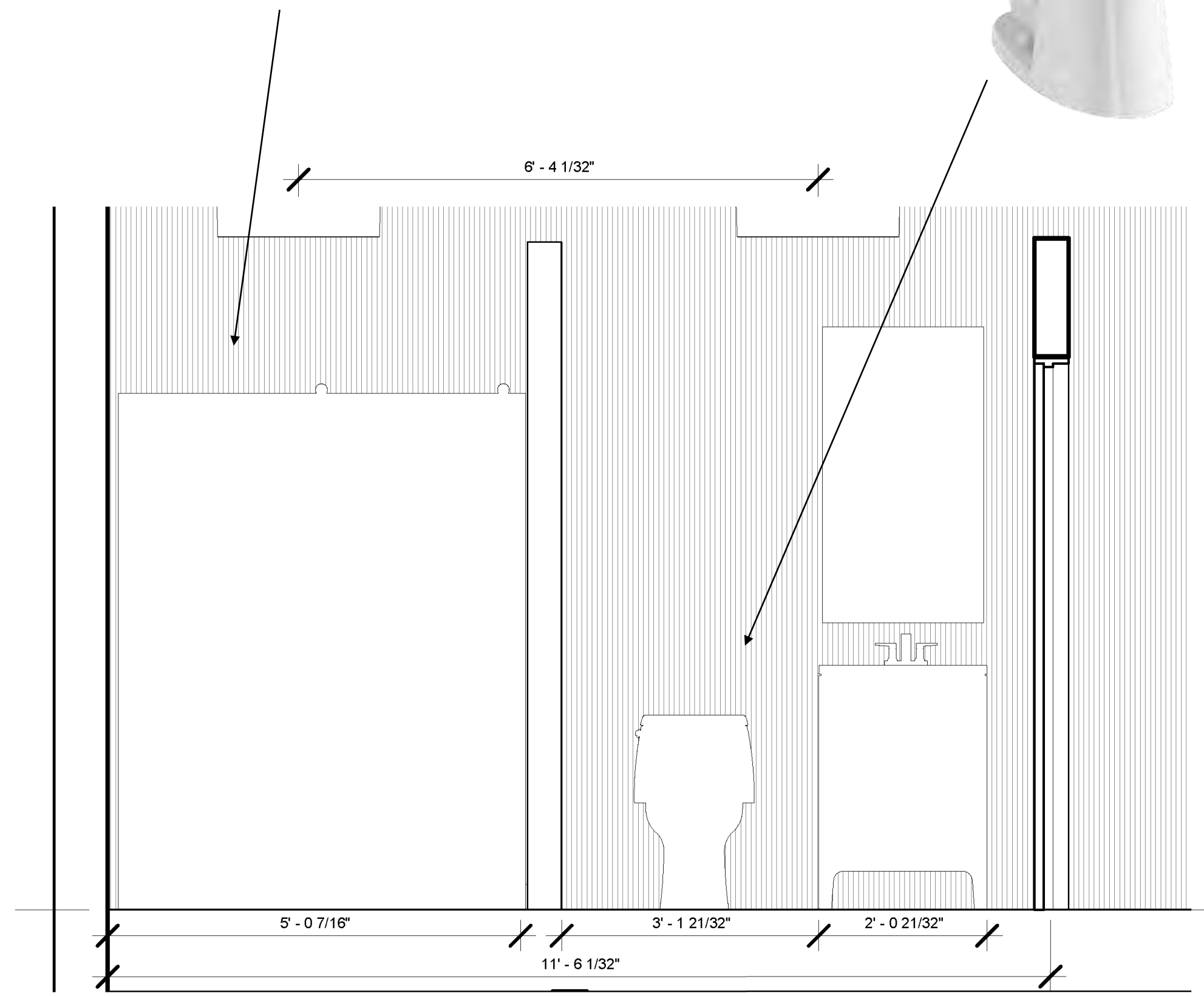


Master Bath West Elevation N.T.S.



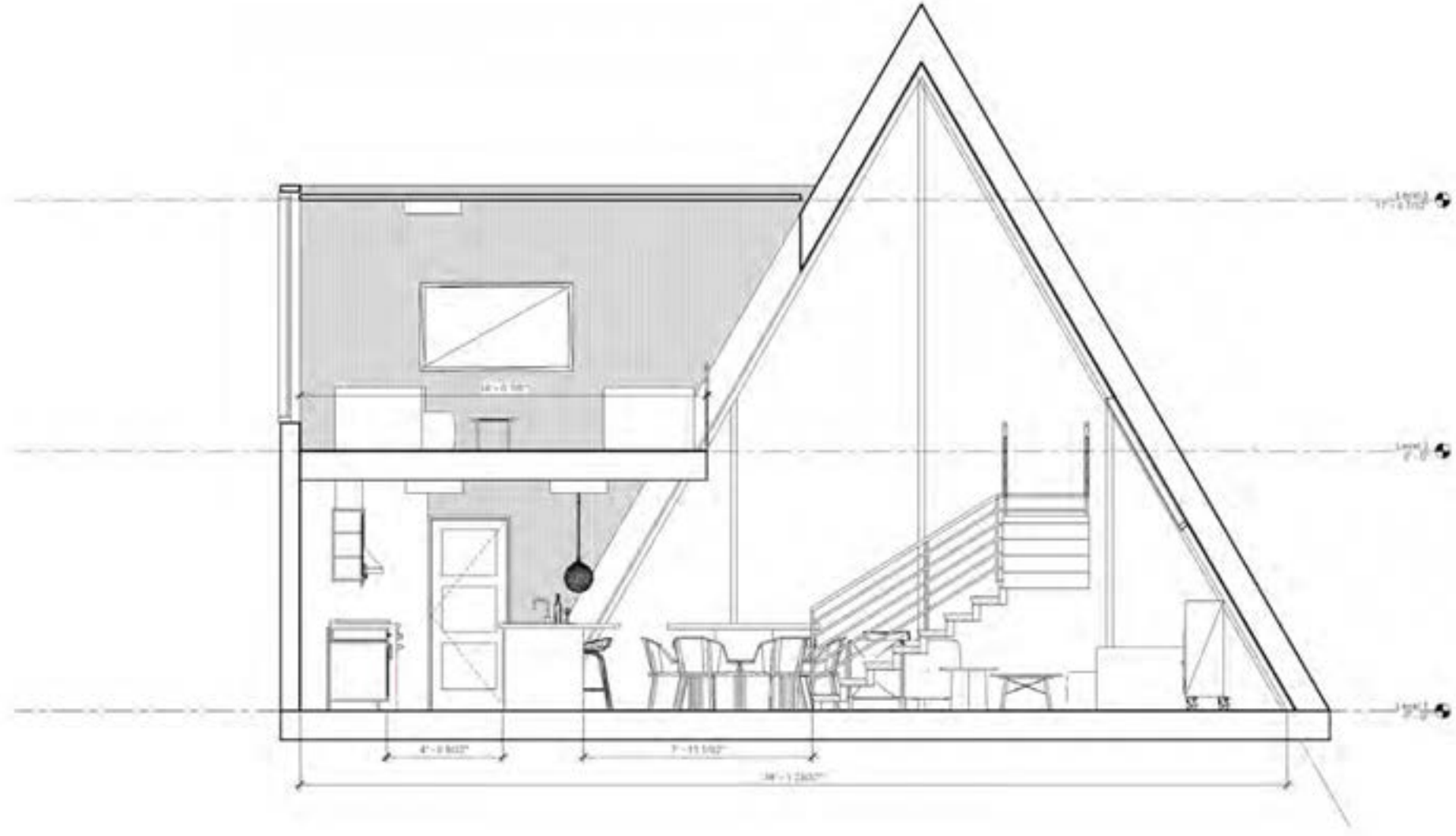
Level 1  
0' - 0"

Level 2  
9' - 0"

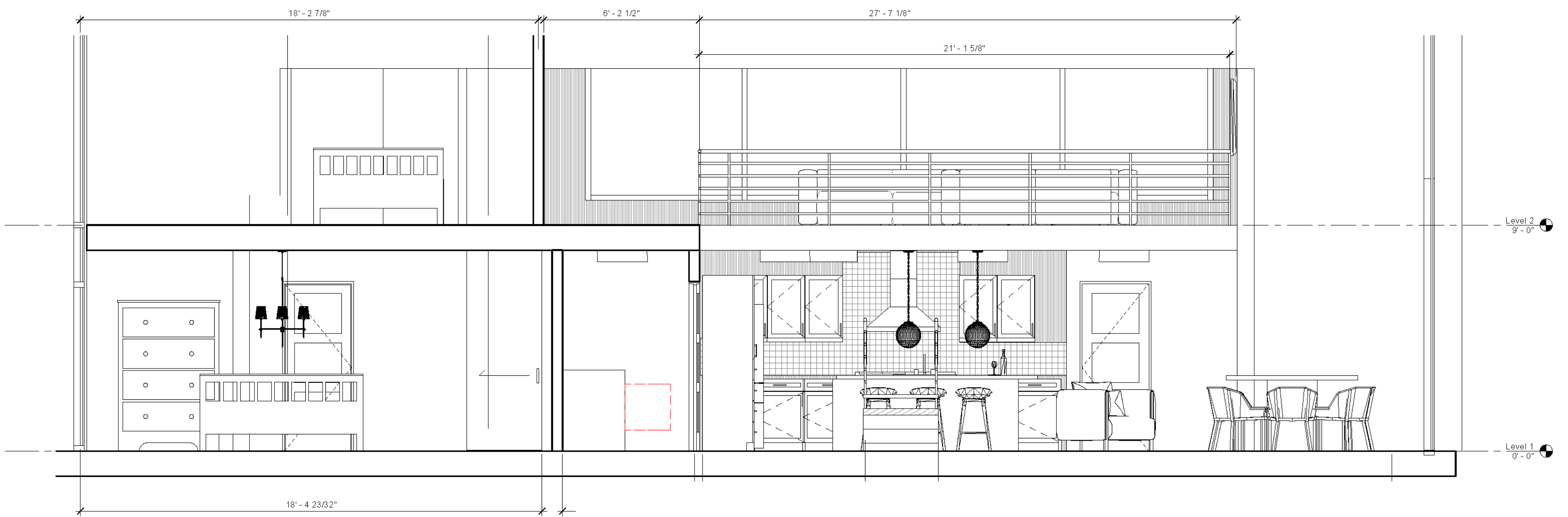


Loft Bathroom Elevation N.T.S.

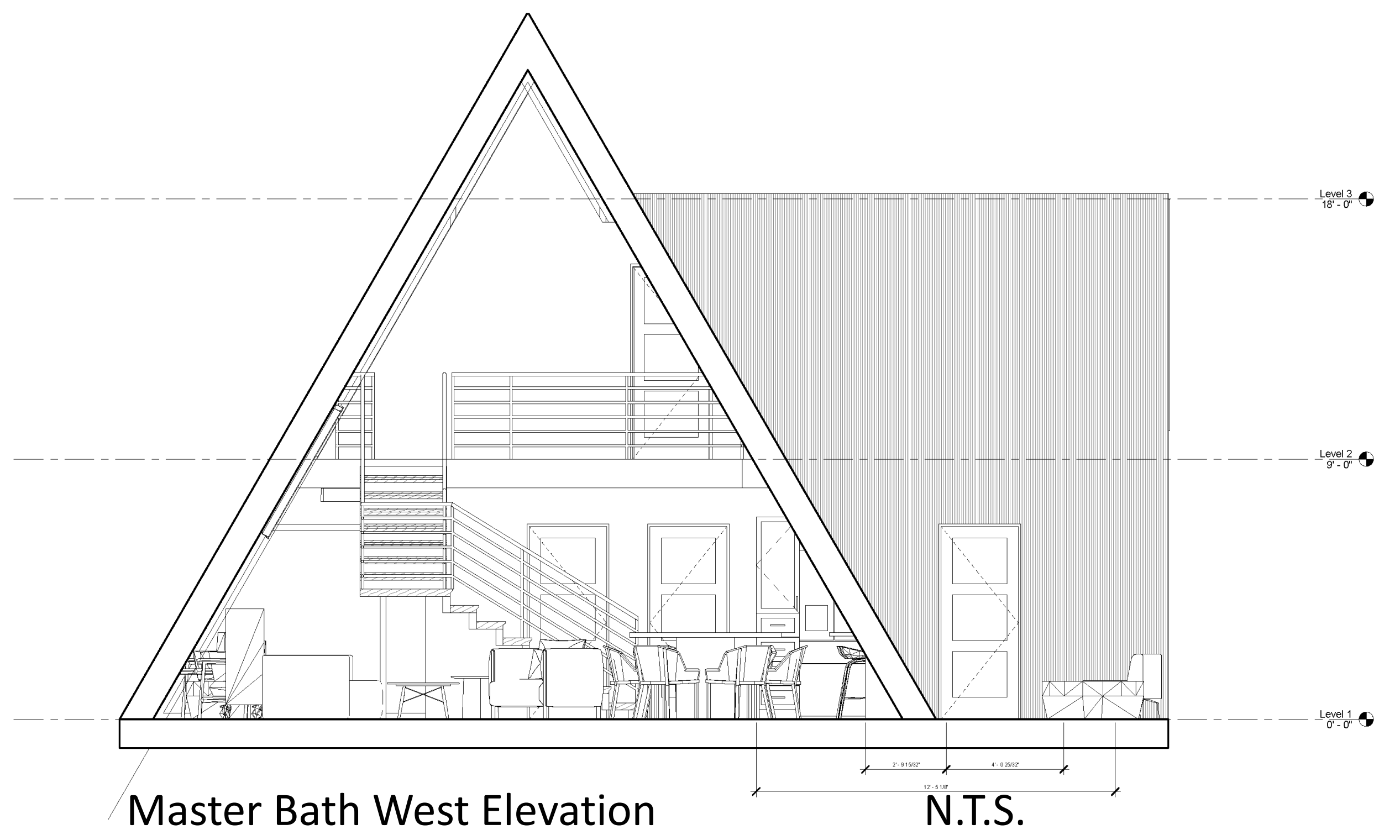




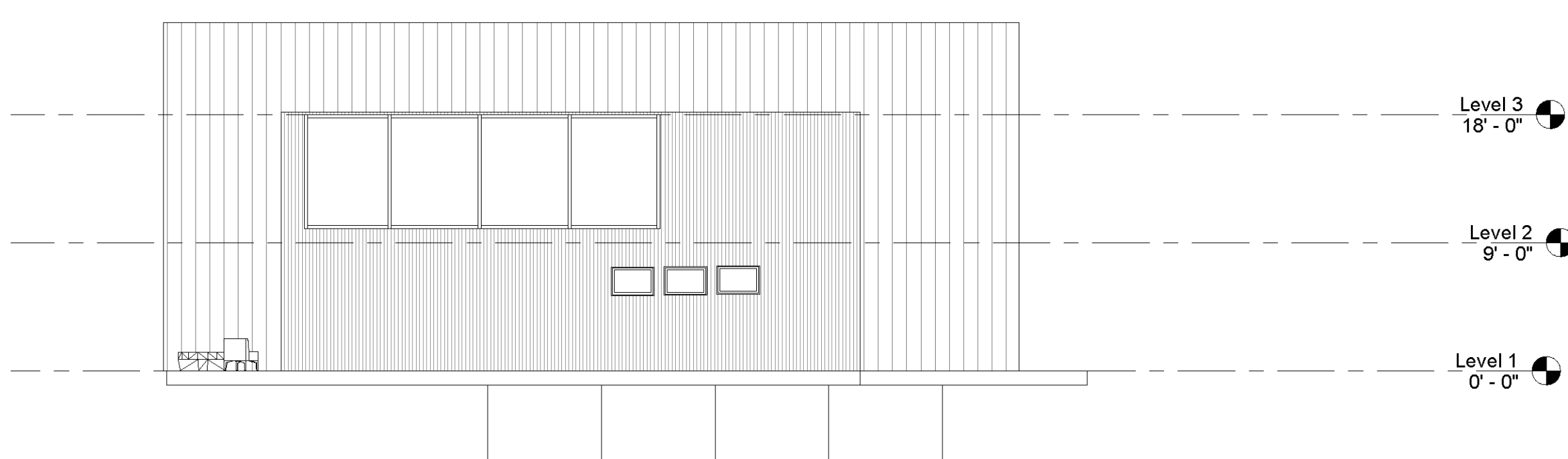
North Back Wall Elevation N.T.S.



Long Residence Elevation N.T.S.



Master Bath West Elevation N.T.S.



East Exterior Elevation N.T.S.

