

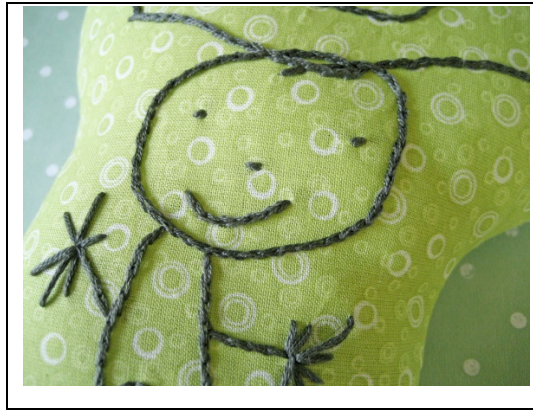
**NAME:**

ART 355: Survey of Art Therapy

Test #2

Fall 2022

1. This image represents which artistic stage \_\_\_\_\_? (5 points)



Lowenfeld & Brittain describe this stage occurring within this age range \_\_\_\_\_?

In 2021, art therapists would describe the age range as \_\_\_\_\_?

List two features of this stage. (Examples include drawing characteristics, space representation, or human figure representation.)

a.

b.

2. Another Lownfeld & Brittain artistic stage is \_\_\_\_\_? (5 points)

In 2021, art therapists would describe the age ranging from \_\_\_\_\_?

Describe two features from this stage. (Examples can consist of drawing characteristics, space representation, or human figure representation.)

a.

b.

3. Who was Hans Prinzhorn? What were his professions? (4 points)

4. What was the name of Prinzhorn's collection, and why is it relevant to the field? (4 points)

5. The *Diagnostic Drawing Series*? (5 points)

Who invented it, and when?

What are the required materials?

How many drawings are involved?

Name the drawing directives in order.

This drawing series is designed for which age group?

6. According to Pat Allen, what is the relationship between the inner critic and art-making? (6 points)

7. What did Dr. Allen believe you needed for a studio? Explain why? (6 points)

8. Myra Levick created the *Levick Emotional and Cognitive Art Therapy Evaluation and Assessment*. (9 points)

The developmental theorist that inspired this assessment was \_\_\_\_\_?

What criteria does it score?

List the required materials.

**In the assessment's order**, name 3 of the 6 directives a child is asked to draw.

9. In Chapter 10, Malchiodi describes a variety of modalities to work with the product; list three: (3 points)

a.

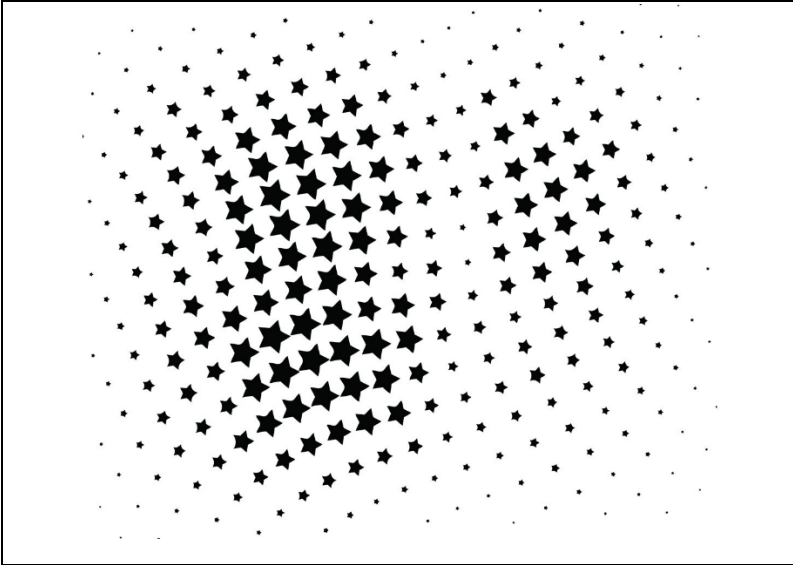
b.

c.

10. Fritz Perls created the following school of Psychology \_\_\_\_\_? (1 point)

11. \_\_\_\_\_ brought this school of Psychology into Art Therapy. (2 points)

12. If you were in therapy with the art therapist in question #11, how would she have you describe the following image? (4 points)



Answer-

13. What is the role of transference in Fritz Perl's style of therapy? (3 points)

14. List the 3 benefits of Thompson's gallery in a psychiatric institution. (3 points)

a.

b.

c.

15. Who introduced Pat Allen to Art Therapy? Which materials were included in the directive, and explain why she was told to use these specific materials? (6 points)



16. What is schema? Describe an example in a drawing. (3 points)

17. Define *Empathic Communication*. (4 points)

18. Define *Aesthetic Action*. (4 points)

The multiple-choice questions 19-24 are worth 2 points each.

19. Who originally described Art Therapy as Dynamically Oriented Psychotherapy?
  - (a) Edith Kramer
  - (b) Carl Jung
  - (c) Margaret Naumburg
  - (d) Florence Cane
  
20. Flow is a psychological state studied by
  - (a) Eric Spruth
  - (b) Bob Ault
  - (c) Mihaly Csikszentmihalyi
  - (d) Pat Allen
  
21. Winnicott was a pediatrician who created the squiggle game. The purpose of this game was
  - (a) a medical assessment
  - (b) to build a therapeutic relationship with the child
  - (c) a developmental assessment
  - (d) all of the above?
  
22. The 3<sup>rd</sup> hand technique is utilized in which school of Art Therapy?
  - (a) Psychodynamic Art Therapy
  - (b) Clinical Art Therapy
  - (c) Studio Art Therapy
  - (d) Socially Engaged Art Therapy

23. Essay Question– **(Your essay must be in complete sentences, also include an introductory and concluding paragraph.)**

Describe the three schools in Art Therapy, including the founders, the dates, and define all primary theories. Finally, articulate which of the three schools Spruth's work is best associated with, and specifically, explain why you are connecting his work with this theoretical orientation. (15 points)





**Extra Credit: (2 points for each accurate answer)**

1. \_\_\_\_\_ utilized Sublimation?
  - (a) Edith Kramer
  - (b) Florence Cane
  - (c) Margaret Naumburg
  - (d) Carl Jung
  
3. The order of Pat Allen's Open Studio Process
  - (a) Witnessing, Verbal Intention, Art Making
  - (b) Verbal Intention, Art-Making, Witnessing
  - (c) Art-Making, Written Intention, Witnessing
  - (d) Written Intention, Art-Making, Witnessing