

Darwin Bath

Isabella Avant, Kathleen Beardsley, Bre Webber
DES 387 - Kitchen and Bath
Professor Jerome Gomez
13 October 2022

Client Profile

The Darwins are looking to renovate their master bathroom as they update their home. They are both attorneys and the wife works from home for minimal hours a week. They have a teenage son who is in high school in the area. They like simple and clean lines. They have renovated a majority of the home to update and brighten it while still keeping its character.

The Darwins are looking to have a fresh and renovated master bathroom. Their current space is outdated and includes ample unused space. The couple has asked for an expanded full glass shower, more storage space, french doors opening out to a future renovation project, and an all-over updated more luxurious feel. The storage space would be included in both floor to ceiling cabinets and underneath their newly raised countertops. To capture the more updated luxurious feel the design will include golden accents and uninterrupted lines with traditional southern elements. With keeping their separate vanities, tucked away toilets, and large mirrors, there will be an addition of a vanity space for the wife.

Conceptual Design Inspiration



BRIGHT



CLEAN

WARM



Concept Statement

Conceptual Design Inspiration



BRIGHT



CLEAN

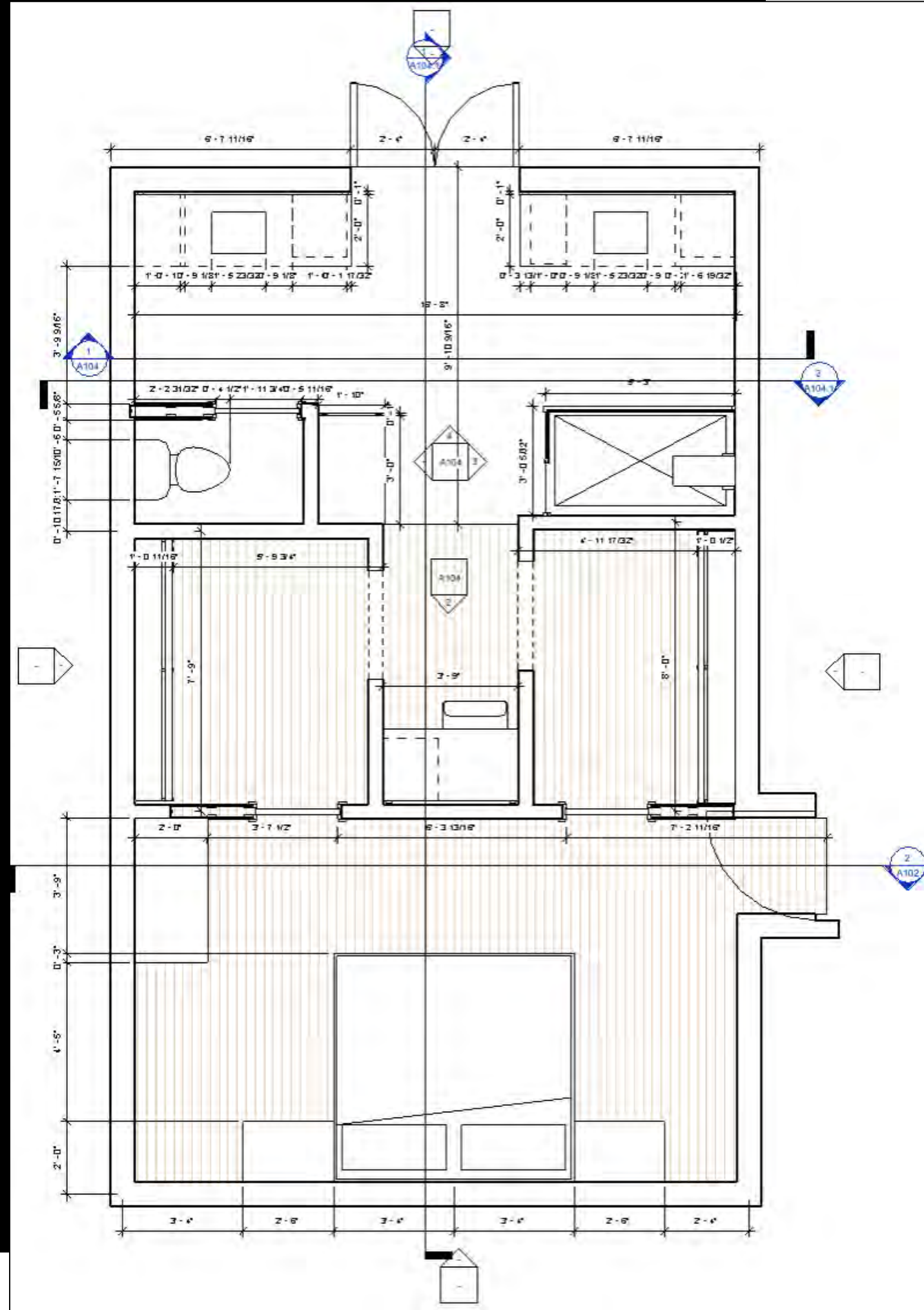
WARM



Detailed Floor Plan

Dimensions for new construction including

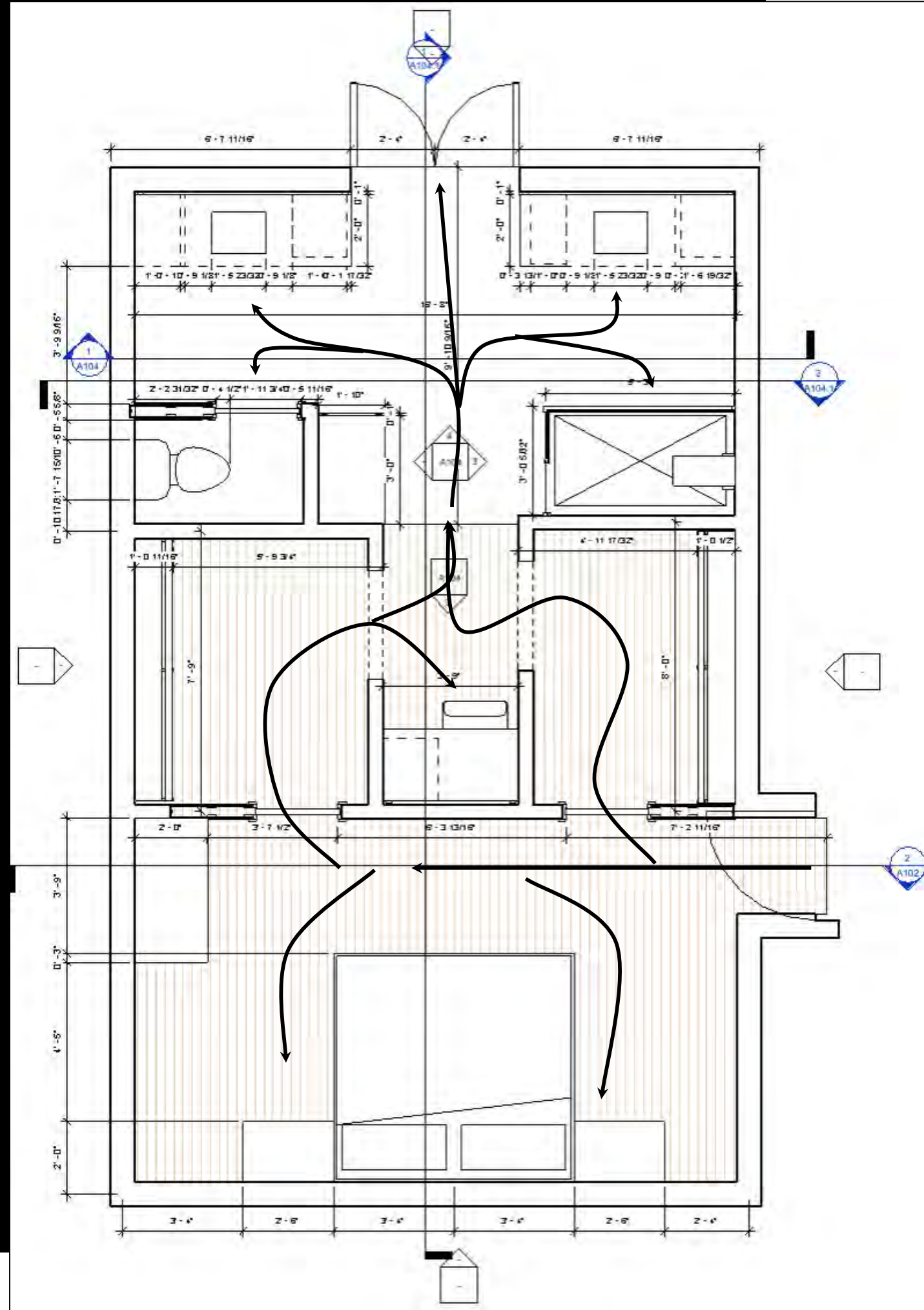
- Floors
- Walls
- Ceilings
- Doors
- Windows



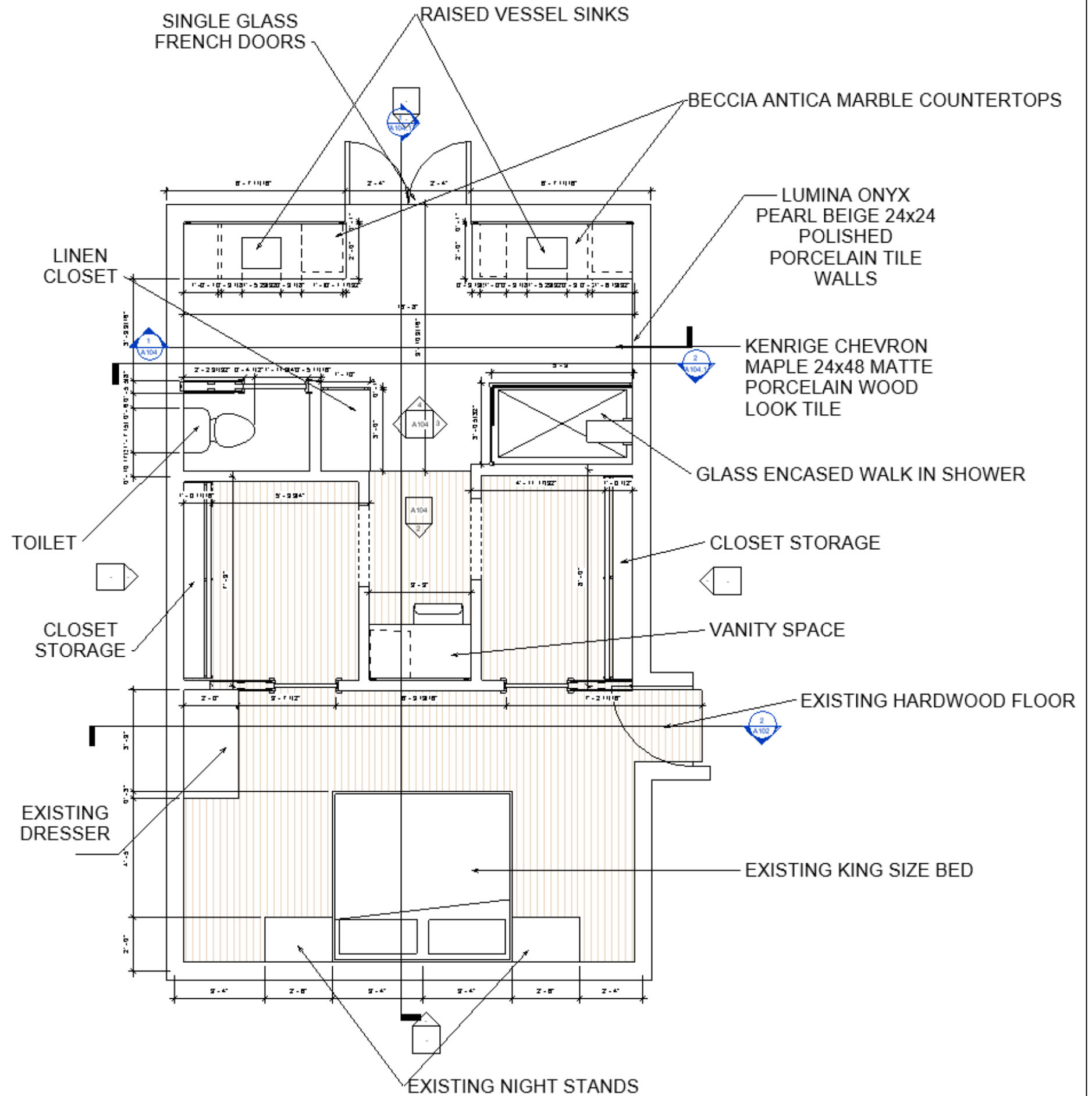
Detailed Floor Plan

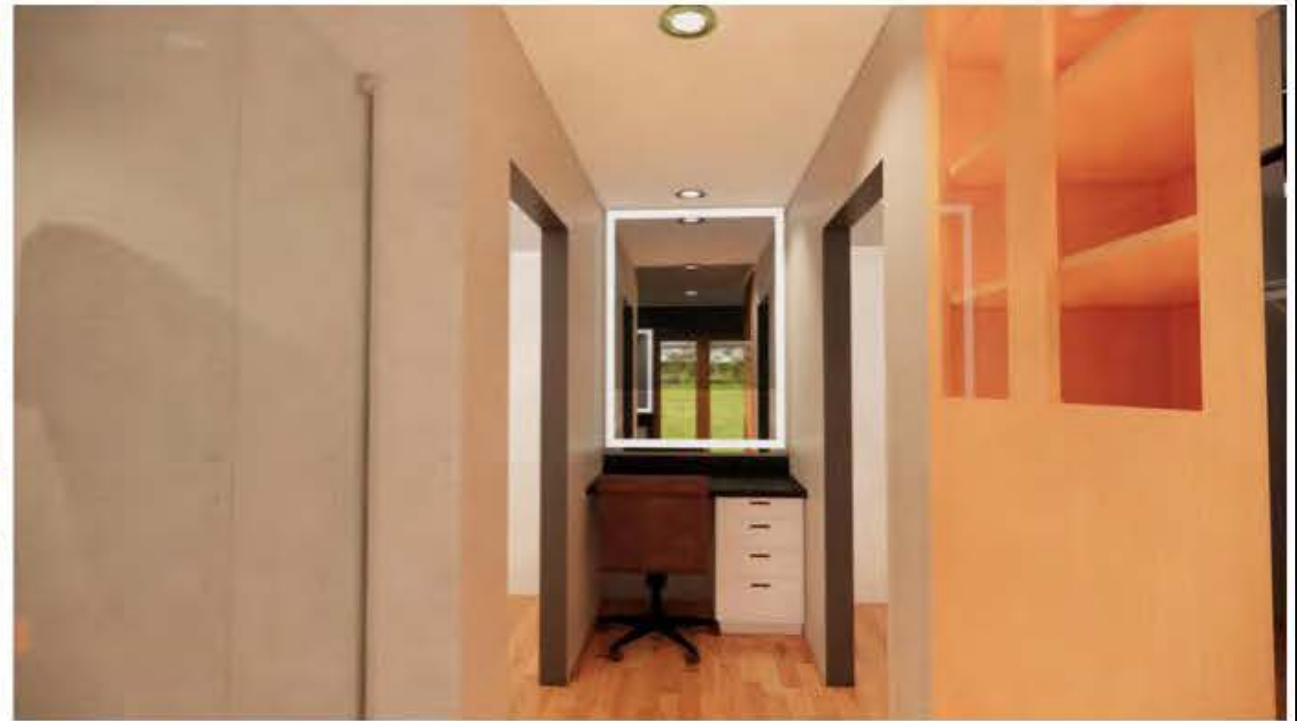
Flow chart

- Must enter through the bedroom
- Must walk through the closets
- Vanities back up to shower and toilet room
- Wall in between closet pocket doors creates division



Detailed Floor Plan



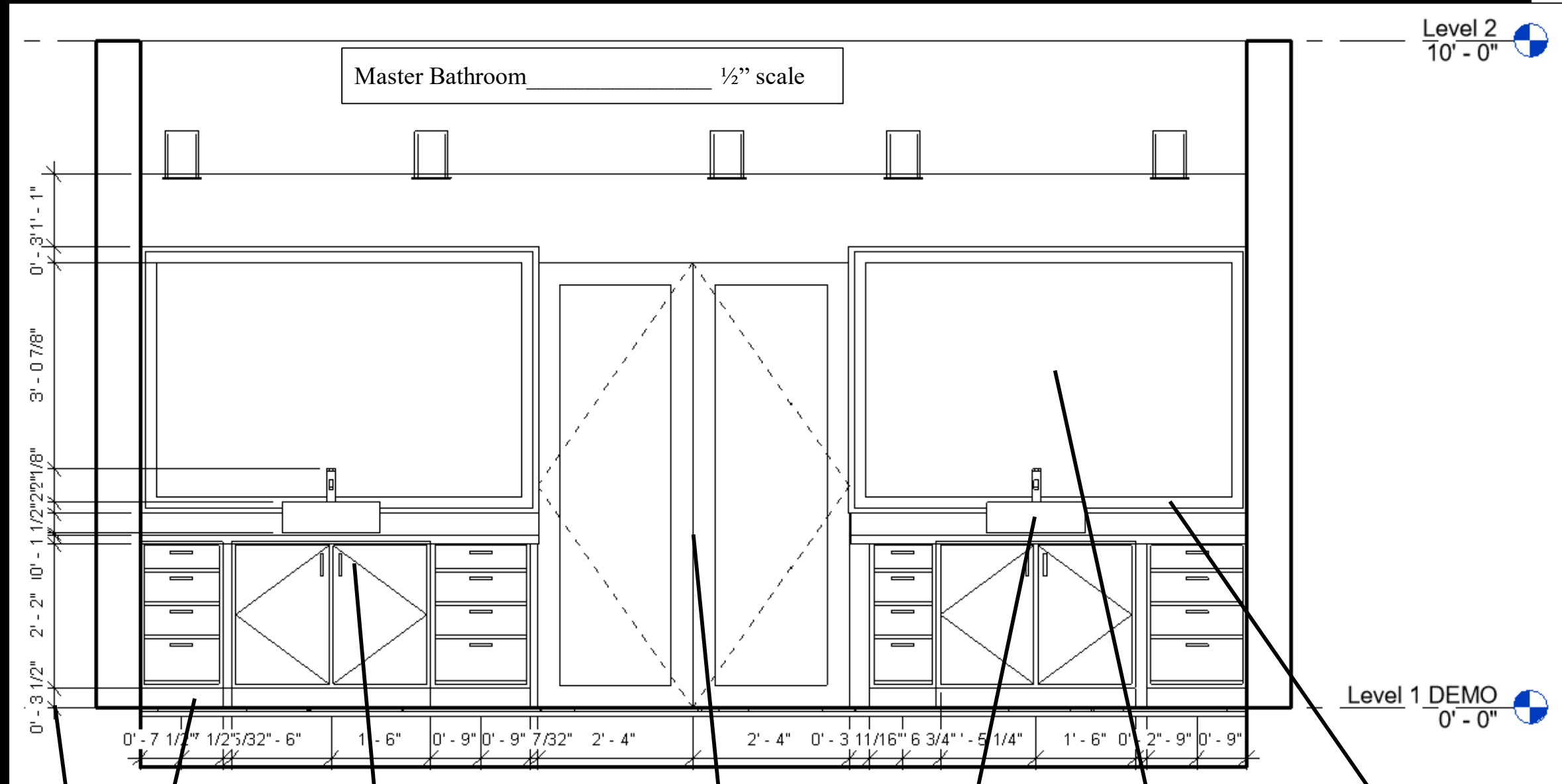


Renderings



Built in Cabinetry

Includes his and hers
vanities on either side
of the french doors



Toekick

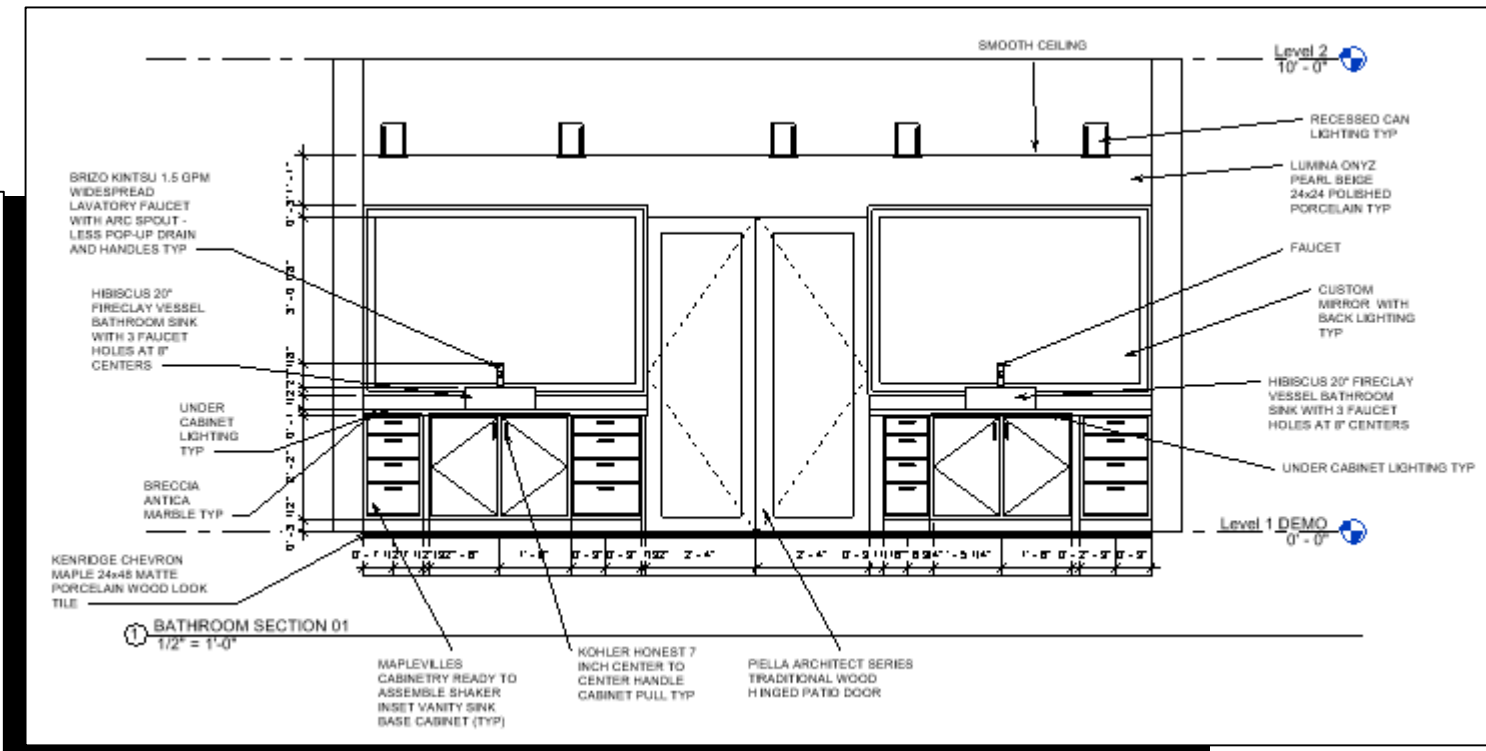
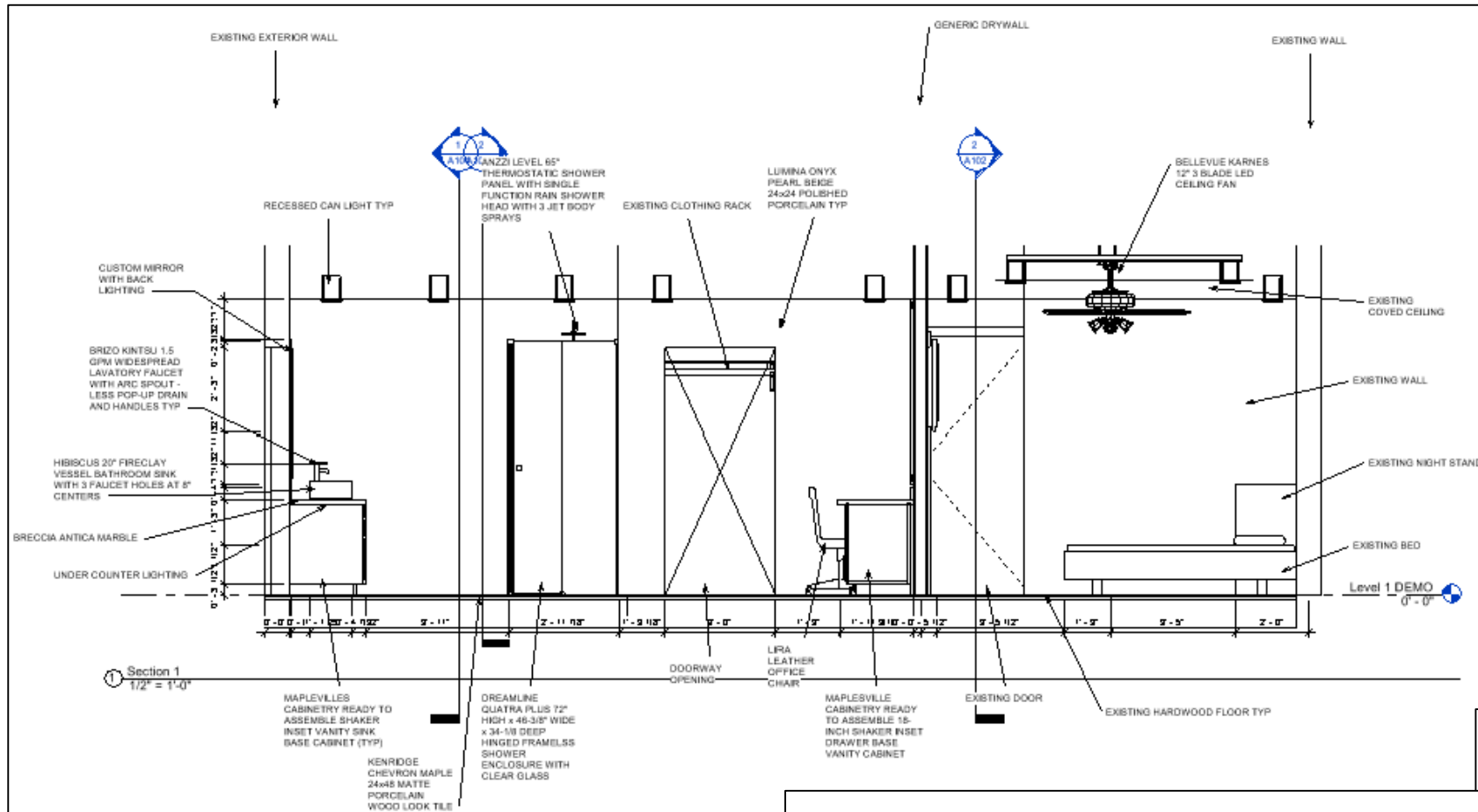
Built in cabinets and
drawers underneath
the counter

French doors
leading to the
backyard

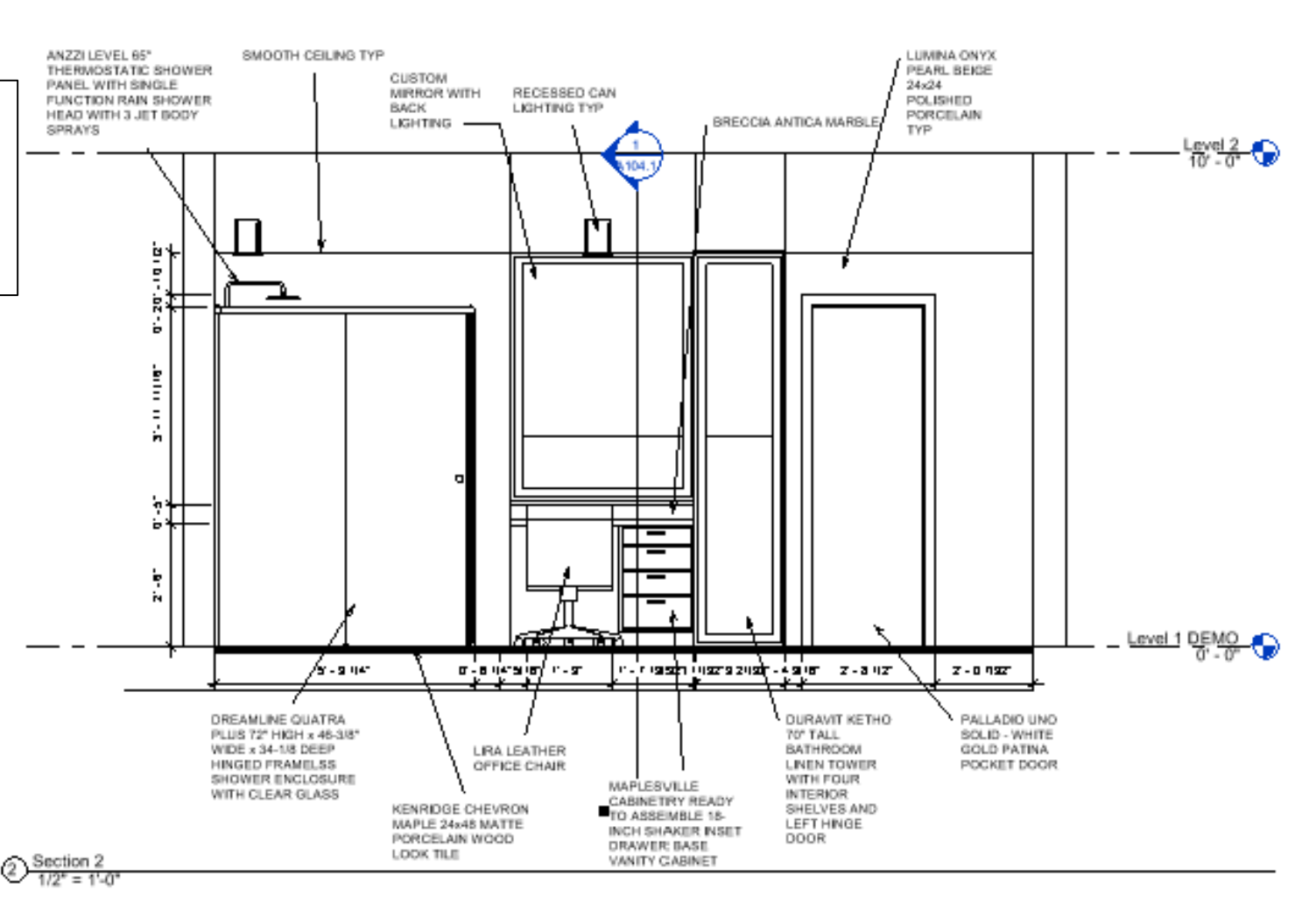
Sink

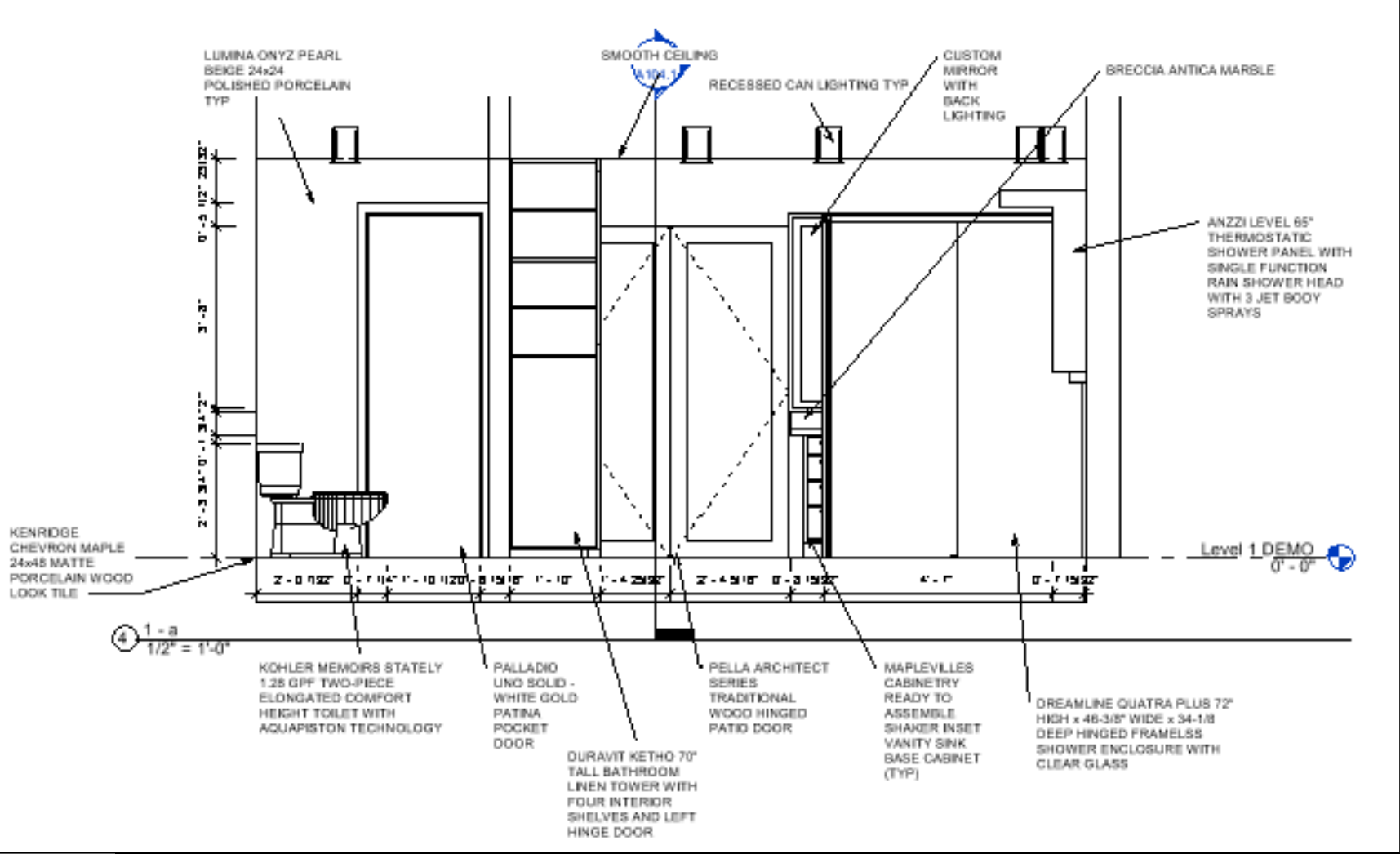
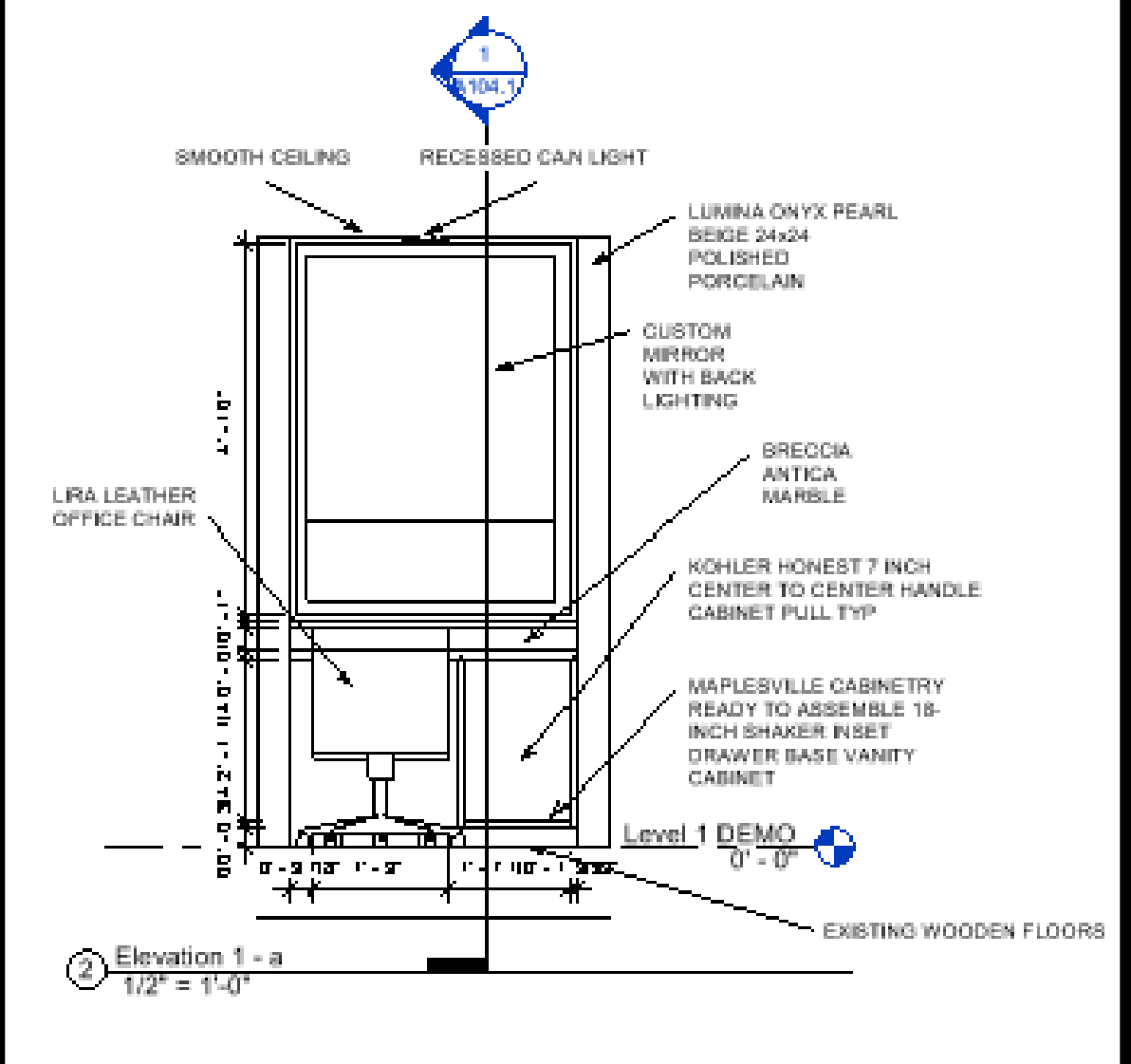
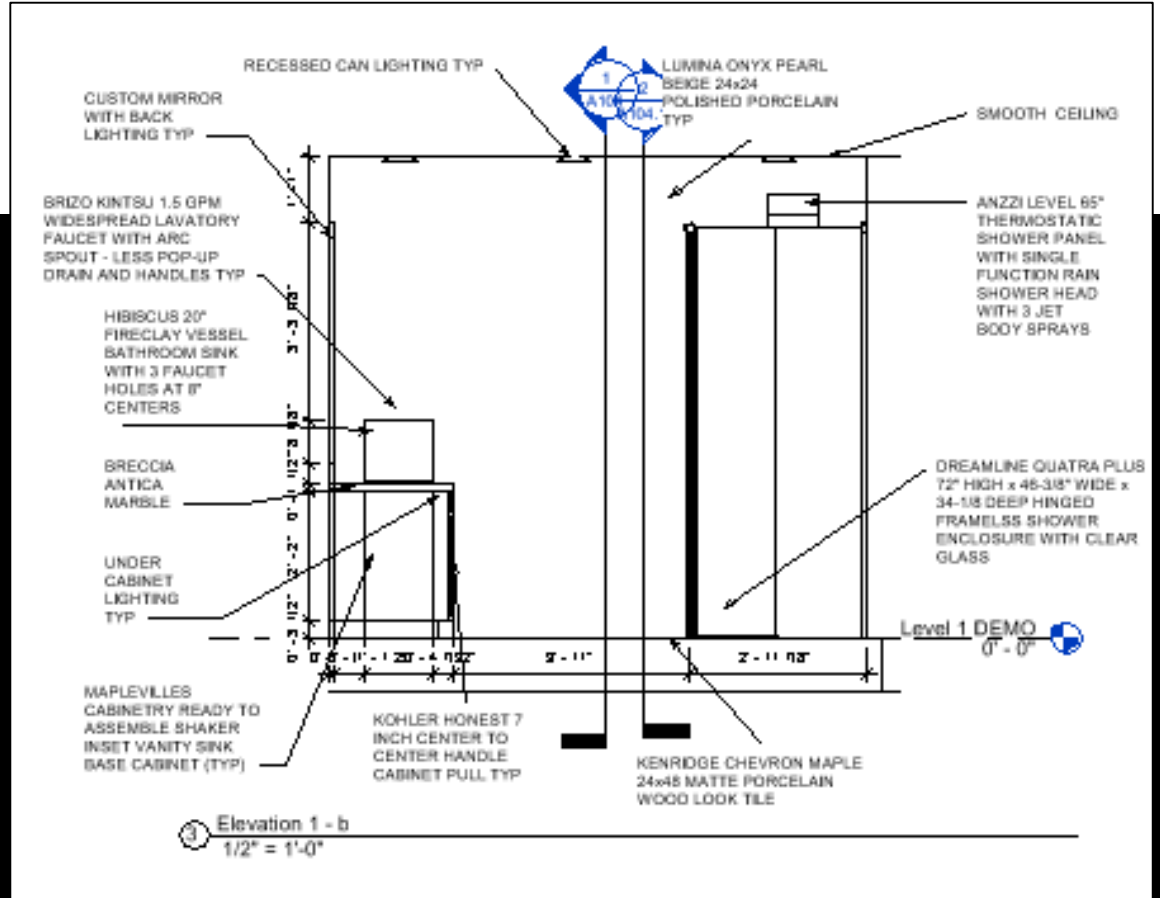
Full sized
mirror with
frame

Lighting
behind
mirrors

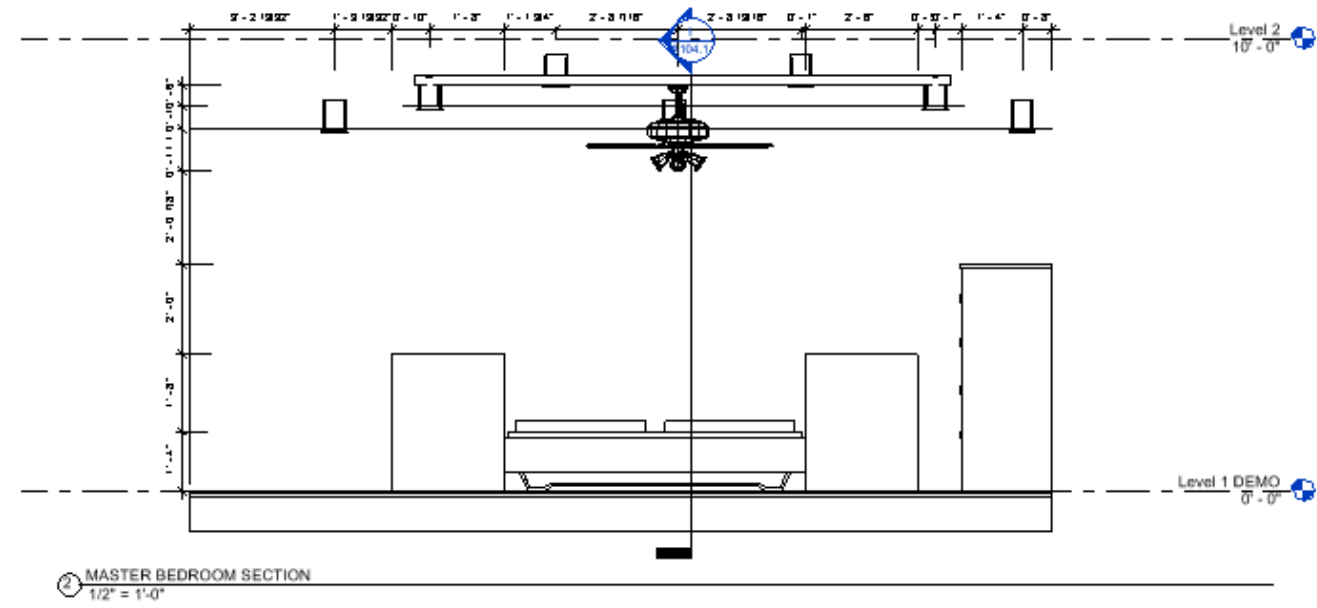
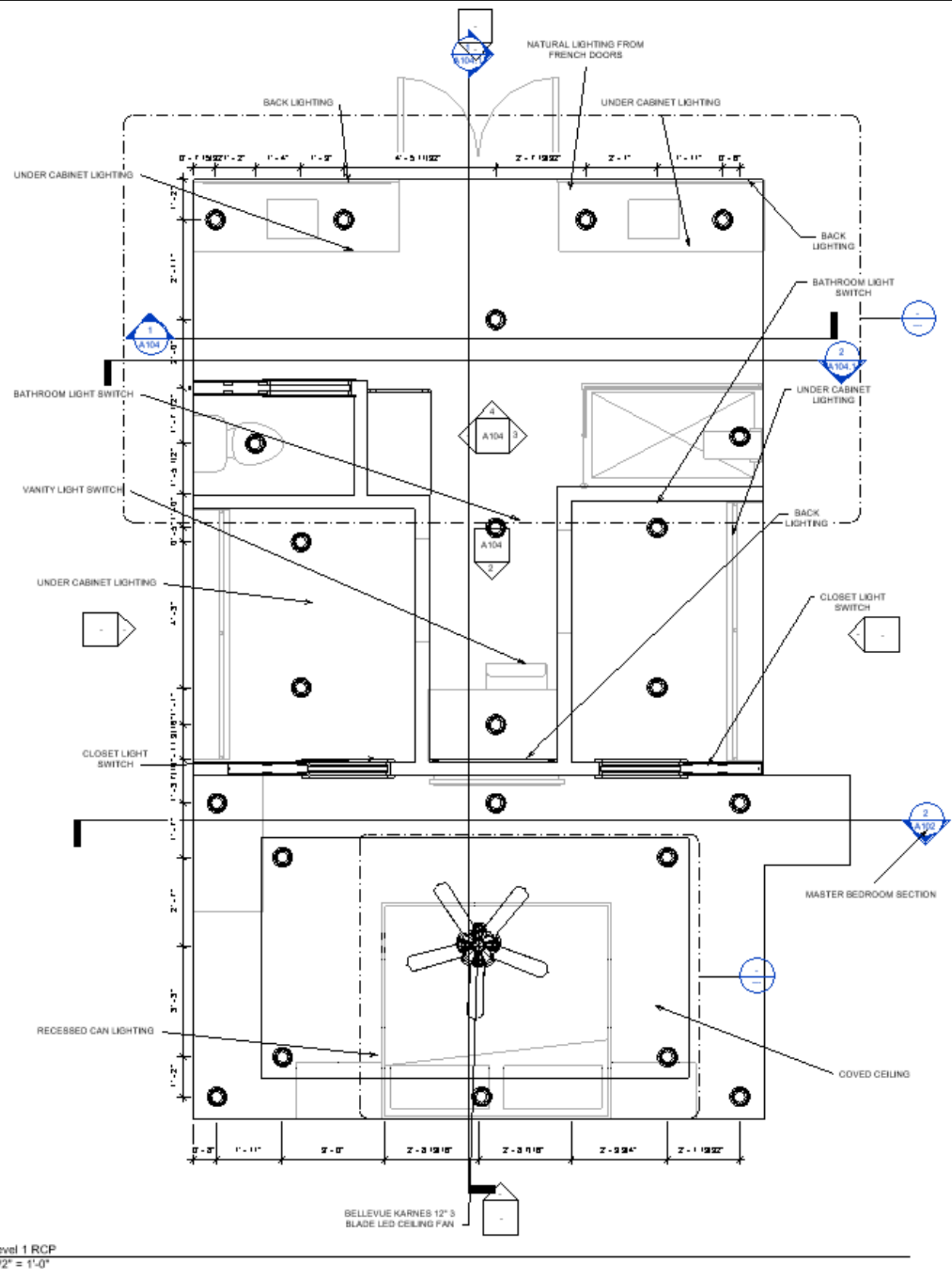


Sections





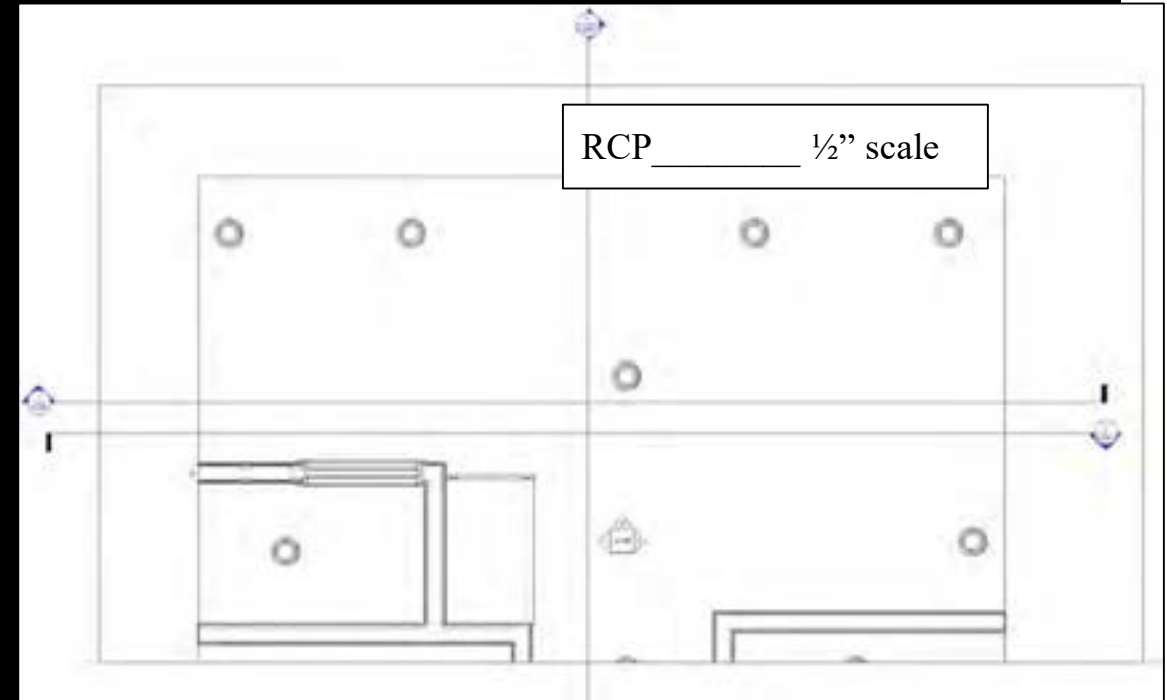
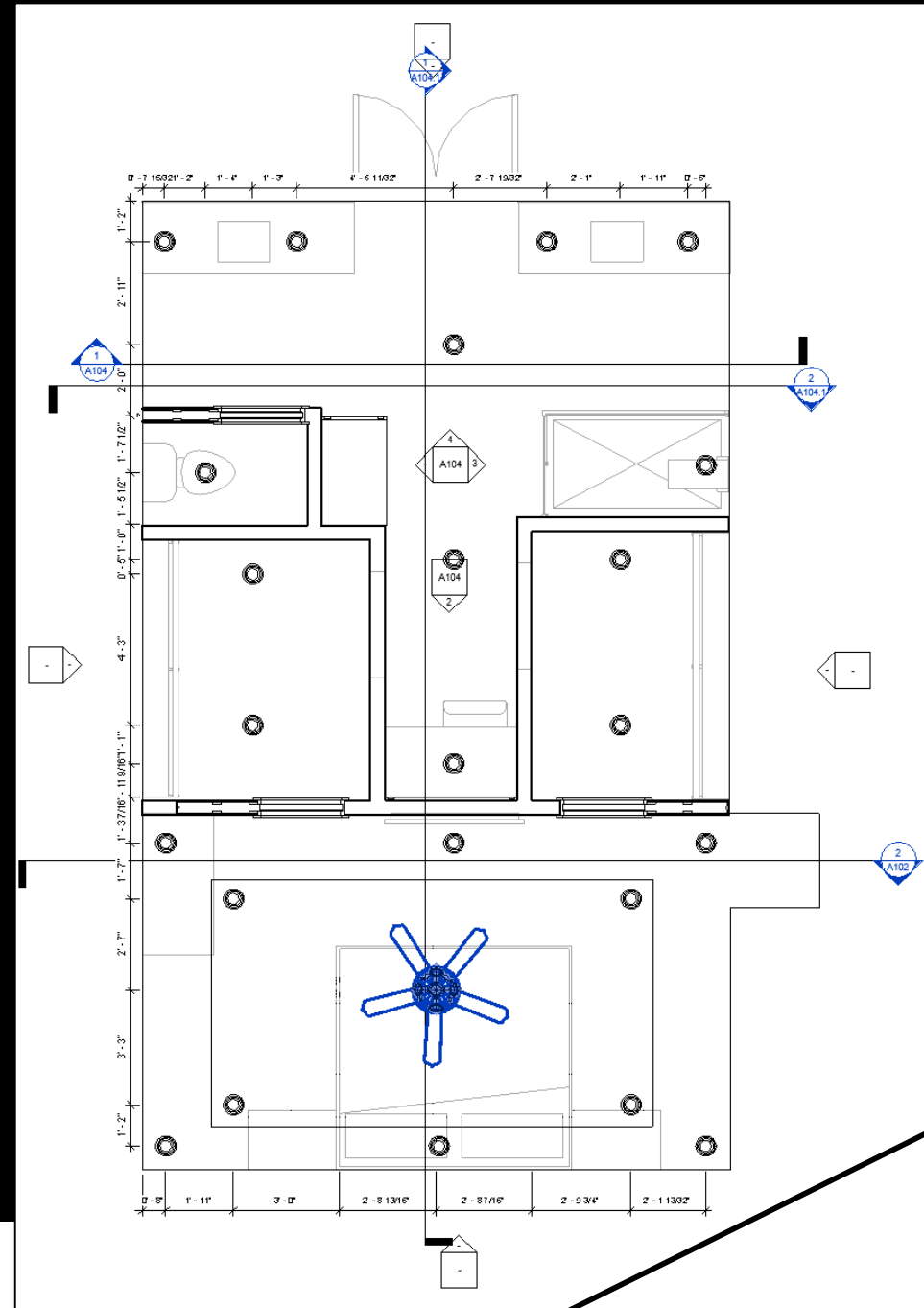
Elevations



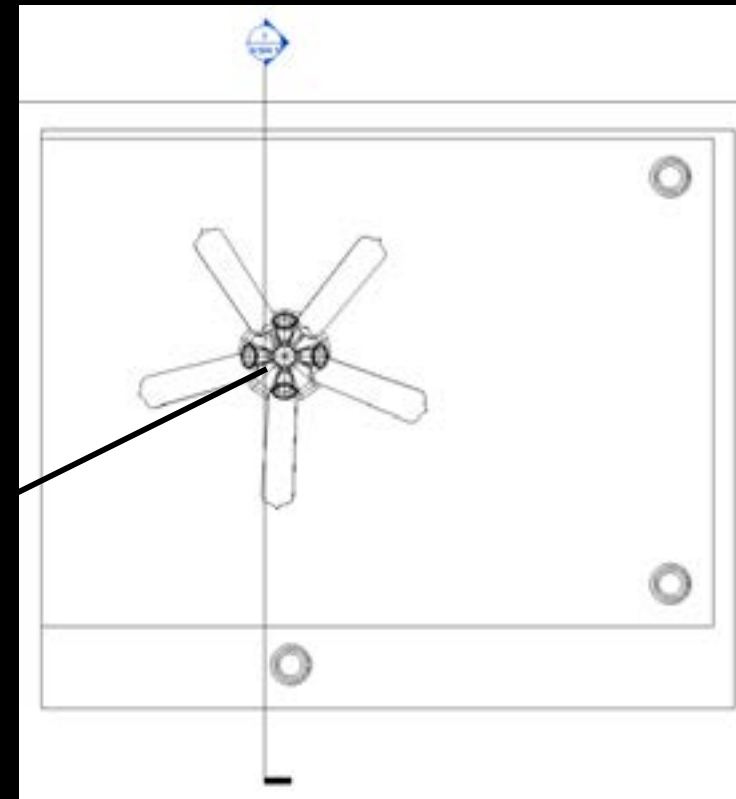
Reflected
Ceiling Plan

Reflected Ceiling Plan

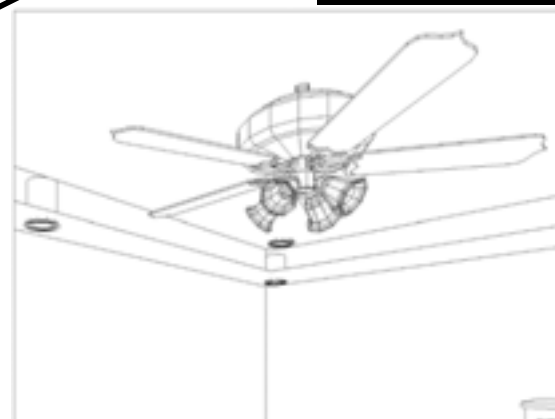
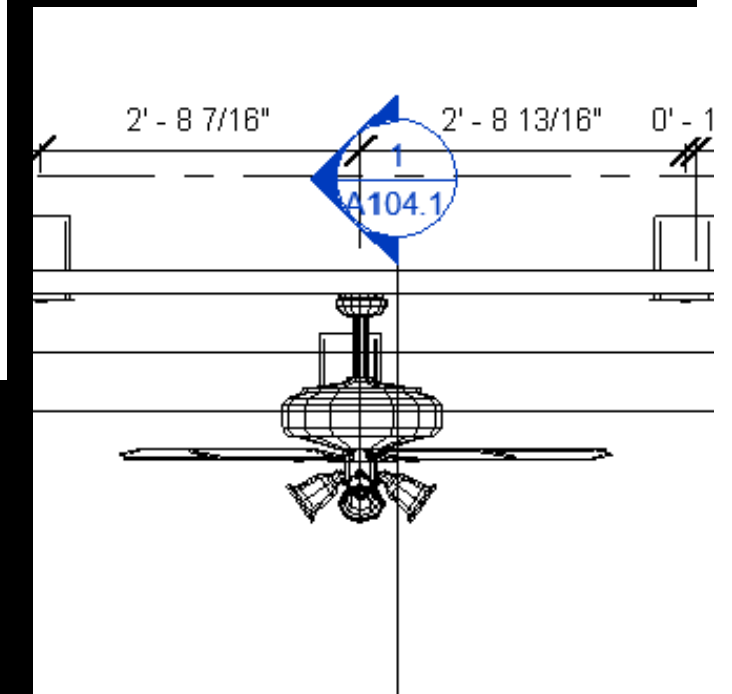
Outside light provided from glass in french doors. Naturally lighting the space, allowing for less use of lights and therefore, more sustainability.

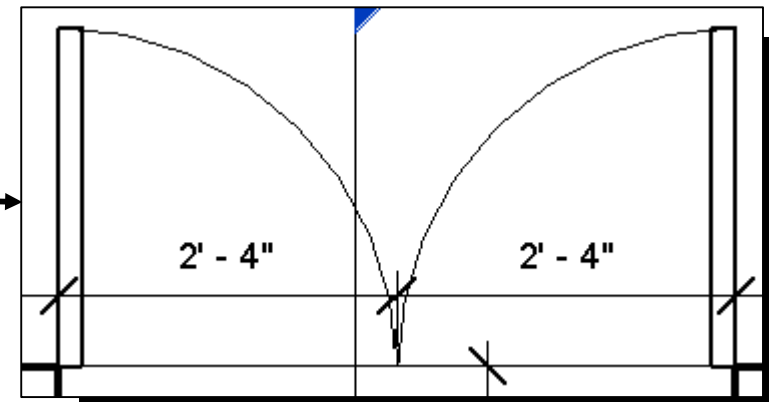
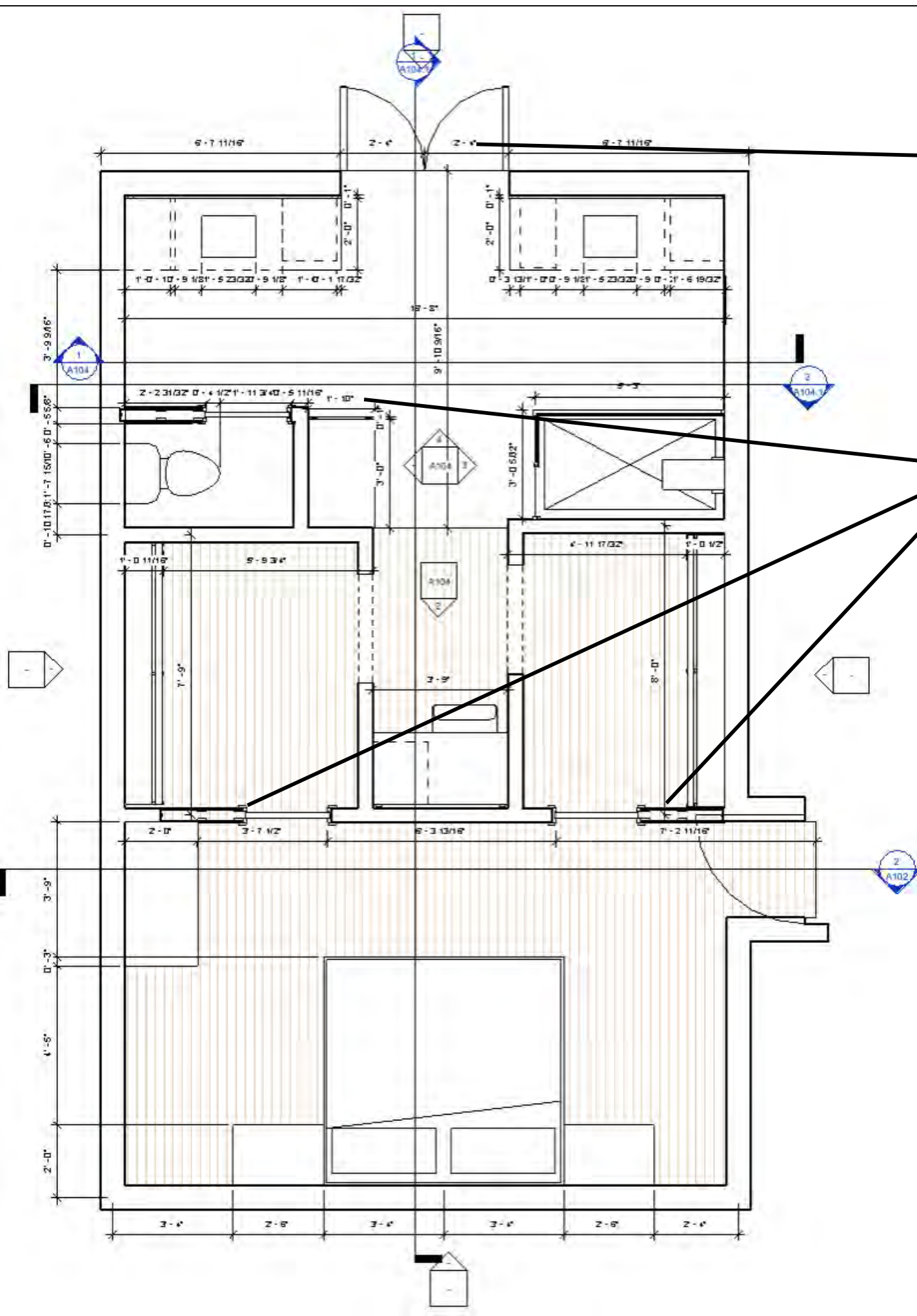


Callout for Bathroom



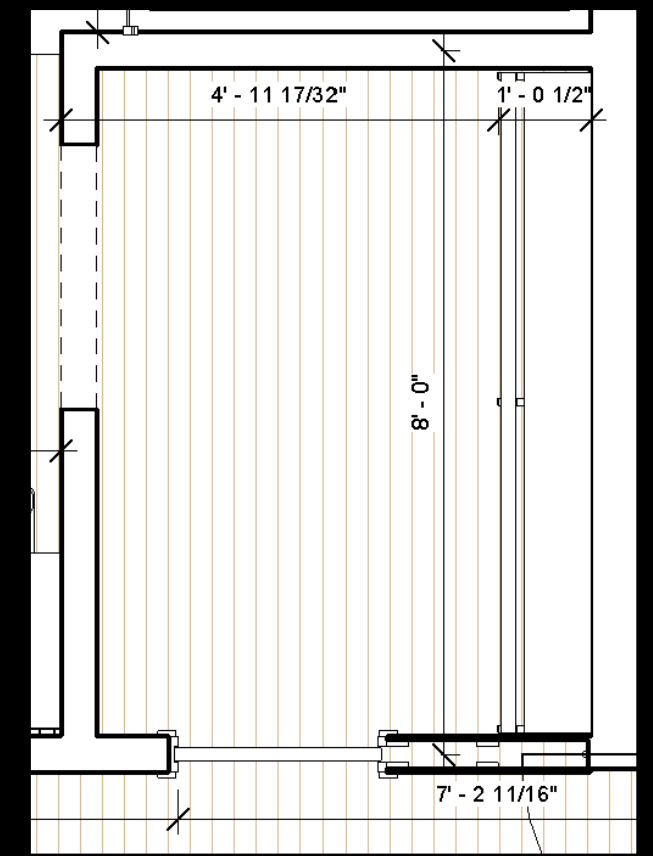
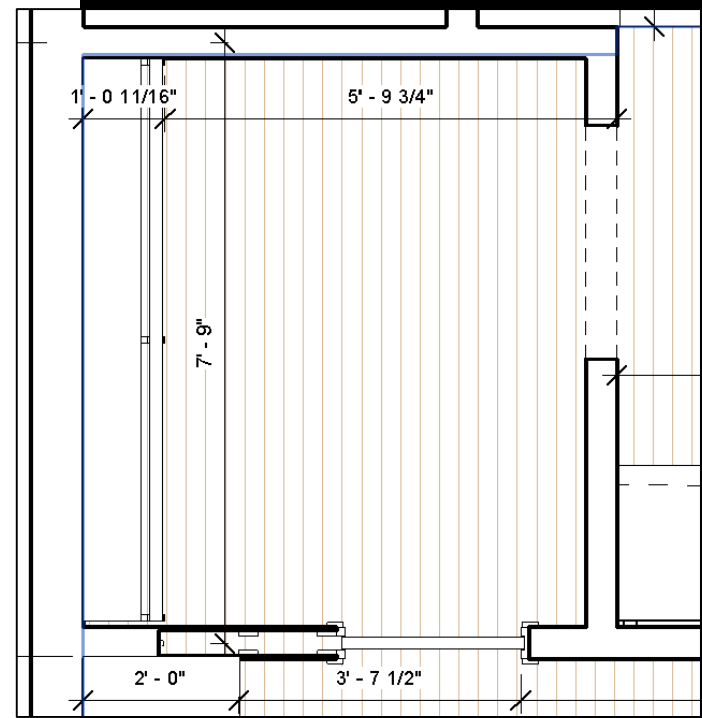
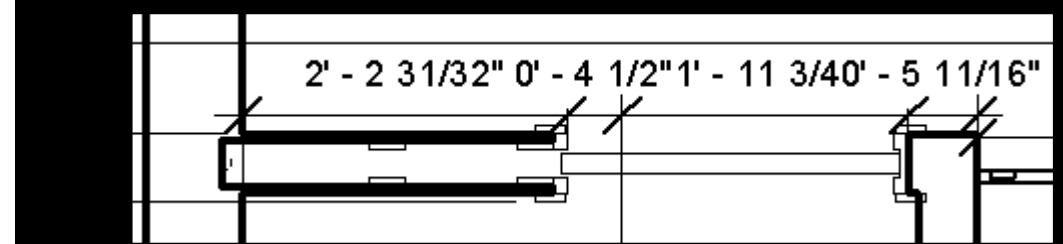
Callout for Bedroom



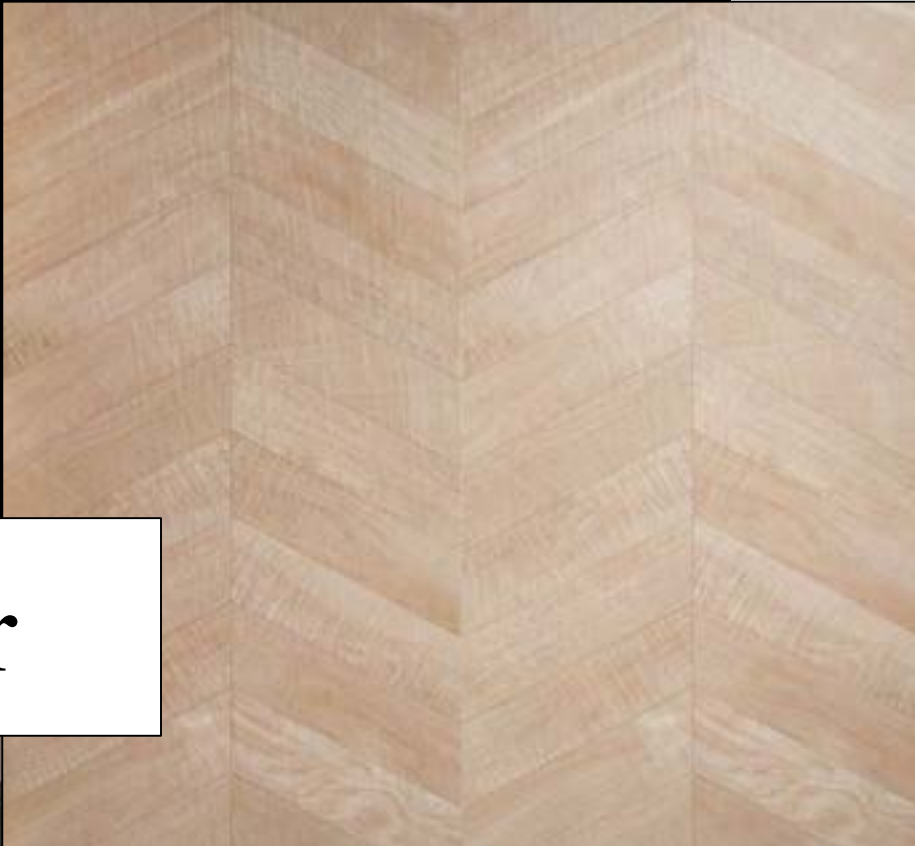


Doors

Pocket Doors



Kenridge
Chevron
Maple 24 x 48
Matte
Porcelain
Wood Look
Tile



Floor



Toilet



Finish in White

Shower

Black
satin
finishes



Wall

S



Lumina Onyx
Pearl Beige
24x24 Polished
Porcelain Tile

Sink and
Faucet



Finish in Luxe
Gold

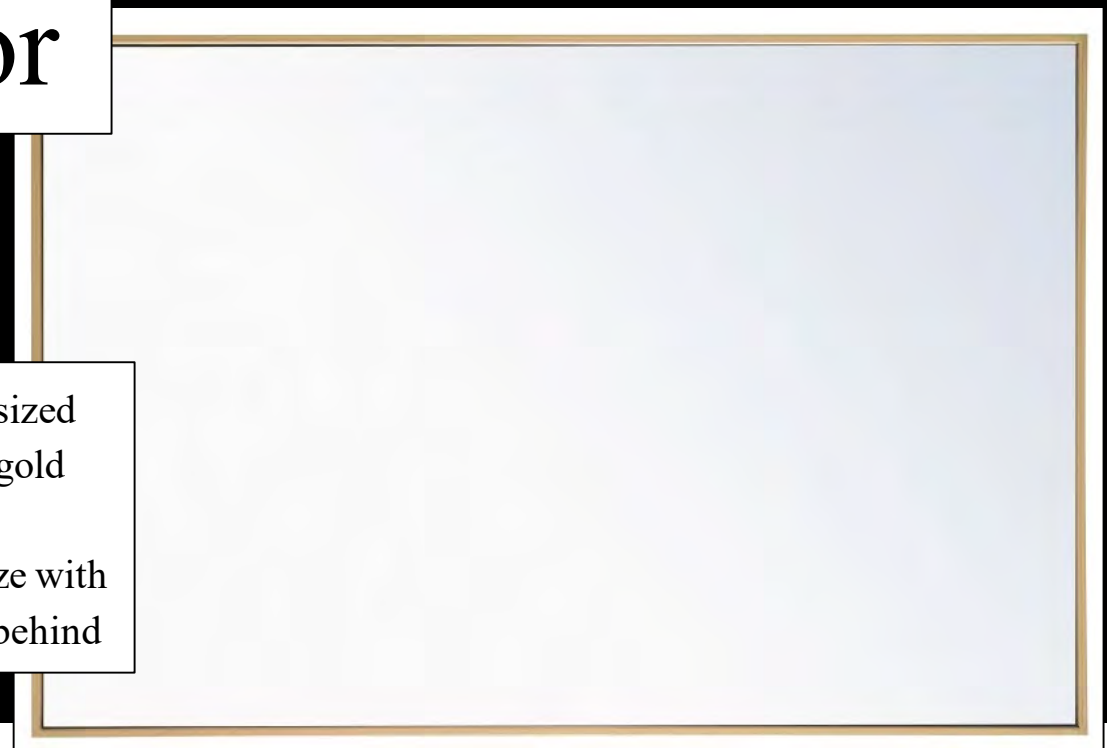


Countertops



Mirror

Current-sized
mirrors, gold
frame to
modernize with
lighting behind

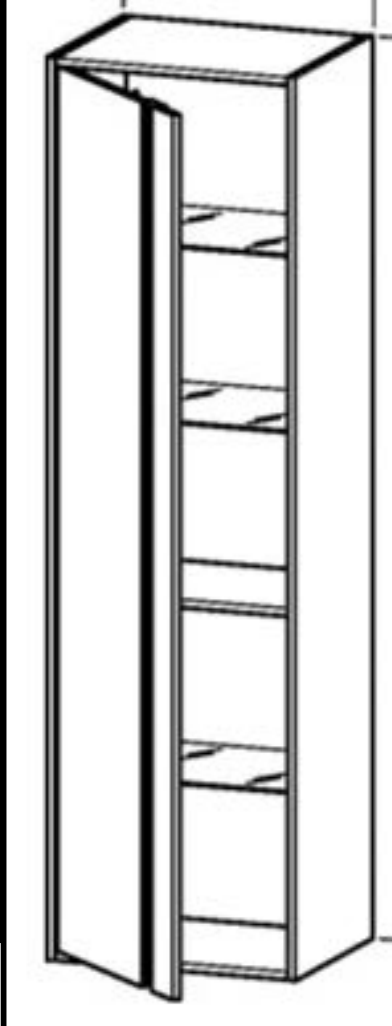


Pocket Door

Finish in White Gold Patina



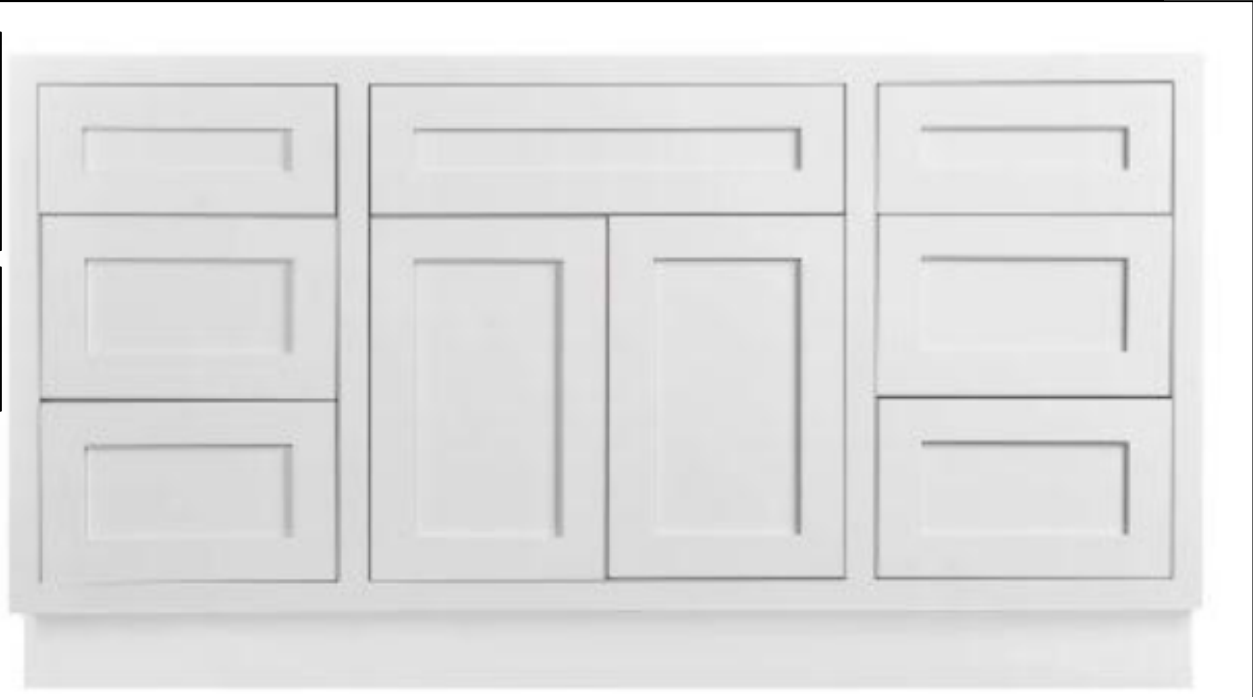
Finish in Matte White



Linen Closet

Cabinetry

Finish in Snow White



Vanity

Finish in Snow White



Upholstery in Bayview Silver

