

Quiz Details

Quiz Instructions:

Hi, Juniors,

This 45 question quiz is not timed and will be due December 6th. You are allowed to look at your slides posted to Canvas as well as the IBC link. Do not look for the information on the web as some can be misleading and not accurate. You can also use your Codes book, but all the information should be on the presentation and lecture slides. You will see an indication above the question to which topic it is referred to.

Good luck and feel free to reach out if you have any questions.

Show Question Details

Question

Concrete:

Which of the following is **NOT** a type of cement?

Question

Concrete: (fill in the blank)

___ acts as a binder- a substance that sets and hardens independently and can hold other materials together.

Question

Gypsum/plaster

When Gypsum Wallboard becomes wet and moldy, it can be recycled and be used for molding and casting.

Question

Gypsum/plaster

_____ has a level of embodied energy, about half of cement. Although gypsum is a readily available material, it can be environmentally damaging.

Question

Paint

LRV is a numerical rating that indicates how much heat and a light color will reflect. What does LRV stand for?

Question

Paint

Primers limit absorbency and keep imperfections from showing through.

Question

Wood

Hardness is based on species and is rated by the Janka Hardness Rating. The lower the rating the harder the wood.

Question

Wood:

What saw type is showing in this image?



Question

Glass

Which of the following is a type of glass that breaks easily, producing long, sharp splinters.

Question

Glass:

Which of the following sentences is true about glass?

Question

Stone, Masonry, and Concrete Masonry Units

_____are used for exterior walkways.

Question

Stone, Masonry, and Concrete Masonry Units

Which of the following stone is form by the compression of **clay** and **shale** sediments?

Question

Metals

Powdered aluminum is used in heat-resistant paint and for pigments.

Question

Metals:

Which of the following is not a type of "ferrous" metal?

Question

Plastics

The first man-made plastic material, celluloid, patented in 1855 by who?

Question**Plastics:**

Fillers increase resistance to UV rays, oxygen, and other environmental chemicals

Question**Egress, Doors, Windows and Glass ratings**

Which statement is true about means of egress ratings?

Question**Egress, Doors, Windows, and Glass ratings**

Which of the following is **not** true about stairways?

Question**Egress, Doors, Windows, and Glass ratings**

Which statement is **NOT** true about smoke barriers?

Question

Egress, Doors, Windows, and Glass ratings

Which statement is **NOT** true about fire-rated doors?

Question**Egress, Doors, Windows, and Glass ratings**

Which one of the following is a characteristic of clear ceramic?

Question**Egress, Doors, Windows, and Glass ratings**

Which is not a type of glazing?

Question**Fire and Smoke Assemblies/Hourly Ratings**

The main purpose of the firewall is to provide a complete horizontal separation of areas in the building.

Question**Fire and Smoke Assemblies/Hourly Ratings**

Which of the following does not describe an assembly?

Question**Fire and Smoke Assemblies/Hourly Ratings**

Which of the following is **NOT** true about stairways

Question**Fire and Smoke Assemblies/Hourly Ratings**

Which statement is true about fire barriers?

Question**Fire and Smoke Assemblies/Hourly Ratings**

Which of the following is **NOT** an example of passive systems?

Question

Fire and Smoke Assemblies/Hourly Ratings

Which statement is most true about horizontal assemblies?

Question**Fire and Smoke Assemblies/Hourly Ratings**

Dwelling and sleeping units within residential occupancies are required to have a separation of a fire partition between them: which of the following is **NOT** required to have a separate fire partition between them?

Question

Occupancy classification:

What is an incidental occupancy?

Question**Codes and Materials Intro:**

More recent history has lead to other implications of building codes, especially fire resistance and preventative measures.

Question

_____ was formed in 1898 to provide testing of materials, development of standards, and provide written and technical information to insure its safety and quality.

Question

Occupancy Classification:

Group "I Occupancy" is classified as Industrial occupancy.

Question

Occupancy Classification:

Mixed occupancy is one, two, or more occupancies that occur in the same buildings and exceed ____ of the space.

Question

Means of Egress:

Which of the following is **NOT** an exterior exit discharge?

Question

Means of Egress:

_____ is area or space in a building that serves individuals that are not able to use a stairway or elevator.

Question**Fire and Smoke Resistant Assembly:**

Gypsum wallboard is ___ thick in residential structures and ___ thick in commercial structures.

Question**Fire and Smoke Resistant Assembly:**

How many construction types are there and which level is most restrictive?

Question**Fiber Basics:**

Hundreds or even thousands of Nylon threads are wrapped together to make thicker and stronger yarns – similar to cotton but far stronger.

Question**Fiber Basics:**

Which sentence best describes the difference between Natural fibers and Synthetic fibers?

Question

Image identification:

According to the chart below, what is the occupancy load factor of a daycare center that measures 600 square feet? (see slide 11 in occupancy classification PPT for the formula)

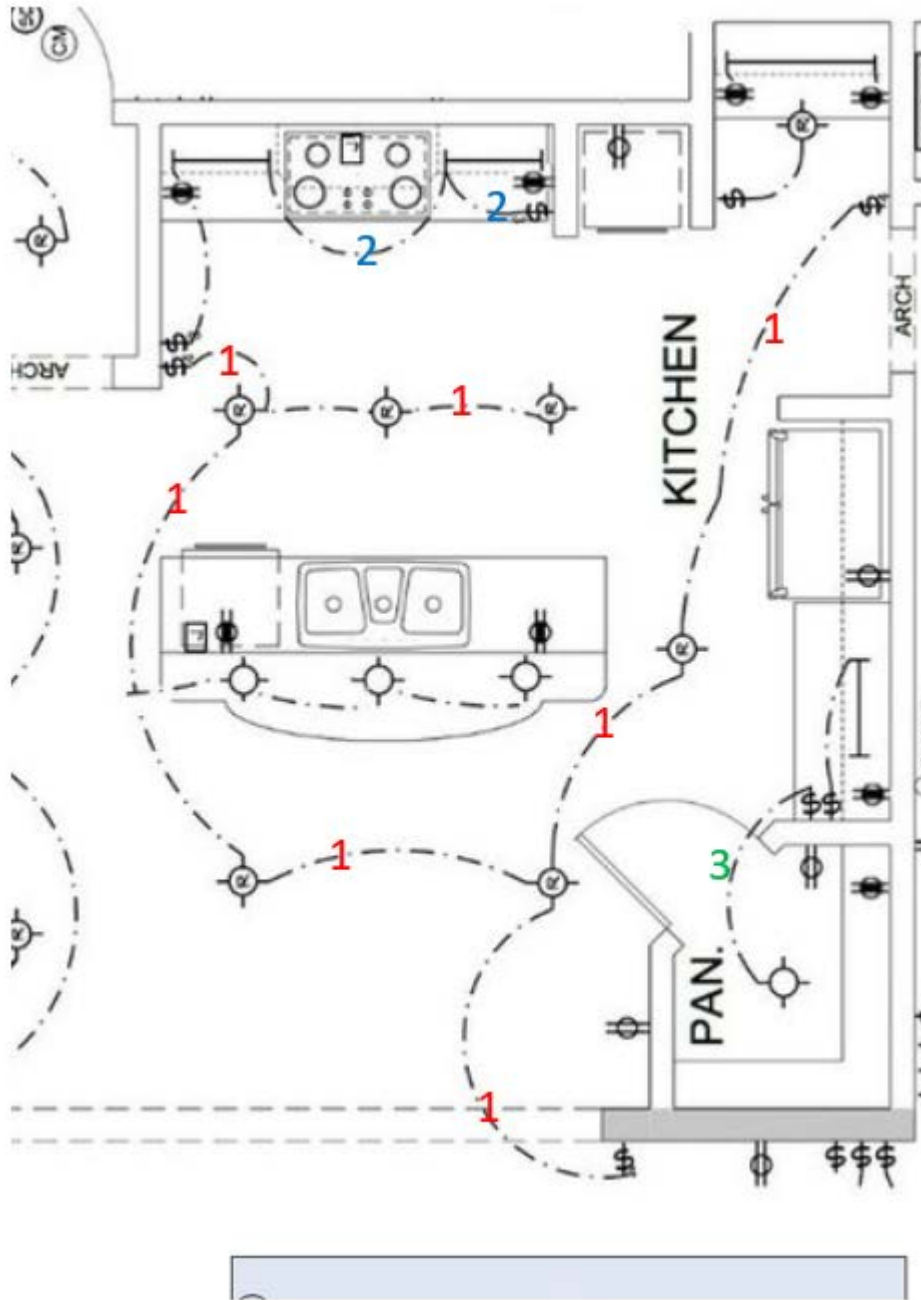
REFERENCE MANUAL

function of space	occupant load factor*
accessory storage areas, mechanical equipment rooms	300 gross
agricultural building	300 gross
aircraft hangars	500 gross
airport terminal	
baggage claim	20 gross
baggage handling	300 gross
concourse	100 gross
waiting areas	15 gross
assembly	
gaming floors (keno, slots, etc.)	11 gross
exhibit gallery and museum	30 net
assembly with fixed seats	See IBC Sec. 1004.4.
assembly without fixed seats	
concentrated (chairs only—not fixed)	7 net
standing space	5 net
unconcentrated (tables and chairs)	15 net
bowling centers, allow 5 persons for each lane including 15 ft of runway, and for additional areas	7 net
business areas	100 gross
courtrooms—other than fixed seating areas	40 net
day care	35 net
dormitories	50 gross
educational	

Question

Image identification:

Which number on the electrical plan indicates a 3-way switch



Question

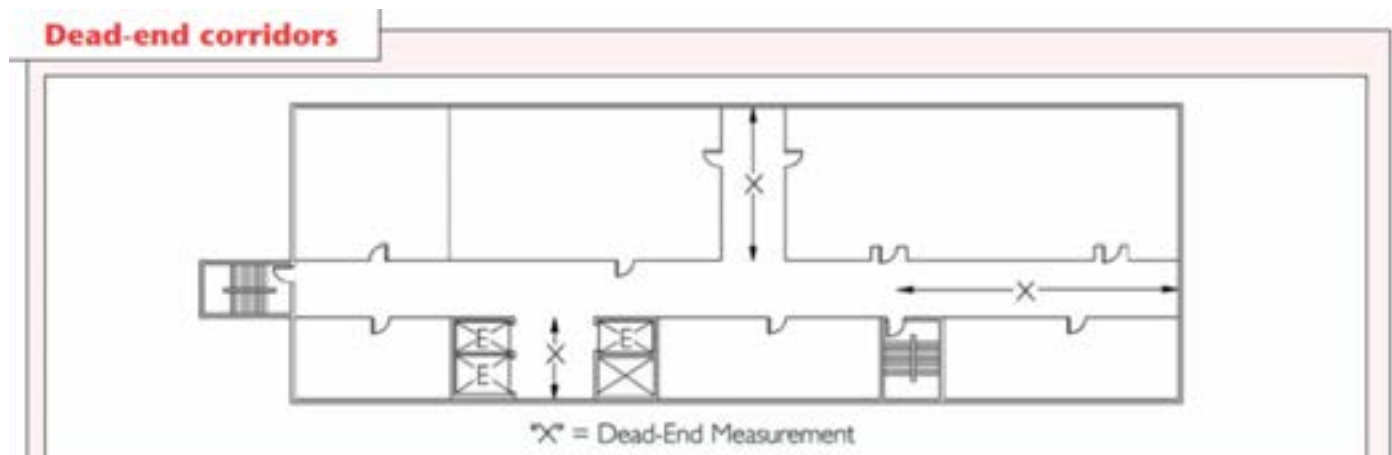
Which type of fire protection is indicated between the two homes in the image below?



Question

Image identification:

Indicated on this image below- is a dead-end corridor in a sprinkled building. What is the allowable distance? and what would it be if the building were not sprinkled? (See slide on means of egress).



Question

Bonus question...

You own a small business that holds 5 people and where exits are limited. You are checking the codes to see if the occupancy classification allows for one exit. According to the chart below (taken from the IBC), what is the maximum occupancy load for a small business?

Table 8.2

Spaces with One
Exit or Exit Access
Doorway (IBC
Table 1015.1)

occupancy	maximum occupant load
A, B, E, F, M, U	49
H-1, H-2, H-3	3
H-4, H-5, I-1, I-2, I-3, I-4, R	10
S	29

2012 International Building Code. Copyright 2012. Washington, DC: International Code Council, Inc. Reproduced with permission. All rights reserved. www.iccsafe.org.