

Cato Kitchen Renovation

Hailey Ellis & Anna Lee

DES 387

October 18, 2022

Client Profile

Client Profile

David Cato and his partner have a charming cottage house built in 1939 on a 3-acre property. David moved from Maryland to Spartanburg, South Carolina six years ago and currently owns an antique store in Spartanburg. He enjoys art, socializing, nature, and relaxing at home. The house can be characterized as sophisticated, classical, and traditional with turn-of-the-century artwork. The main priority is a more open and functional kitchen to meet the needs of their lifestyle and personality.

Concept Statement

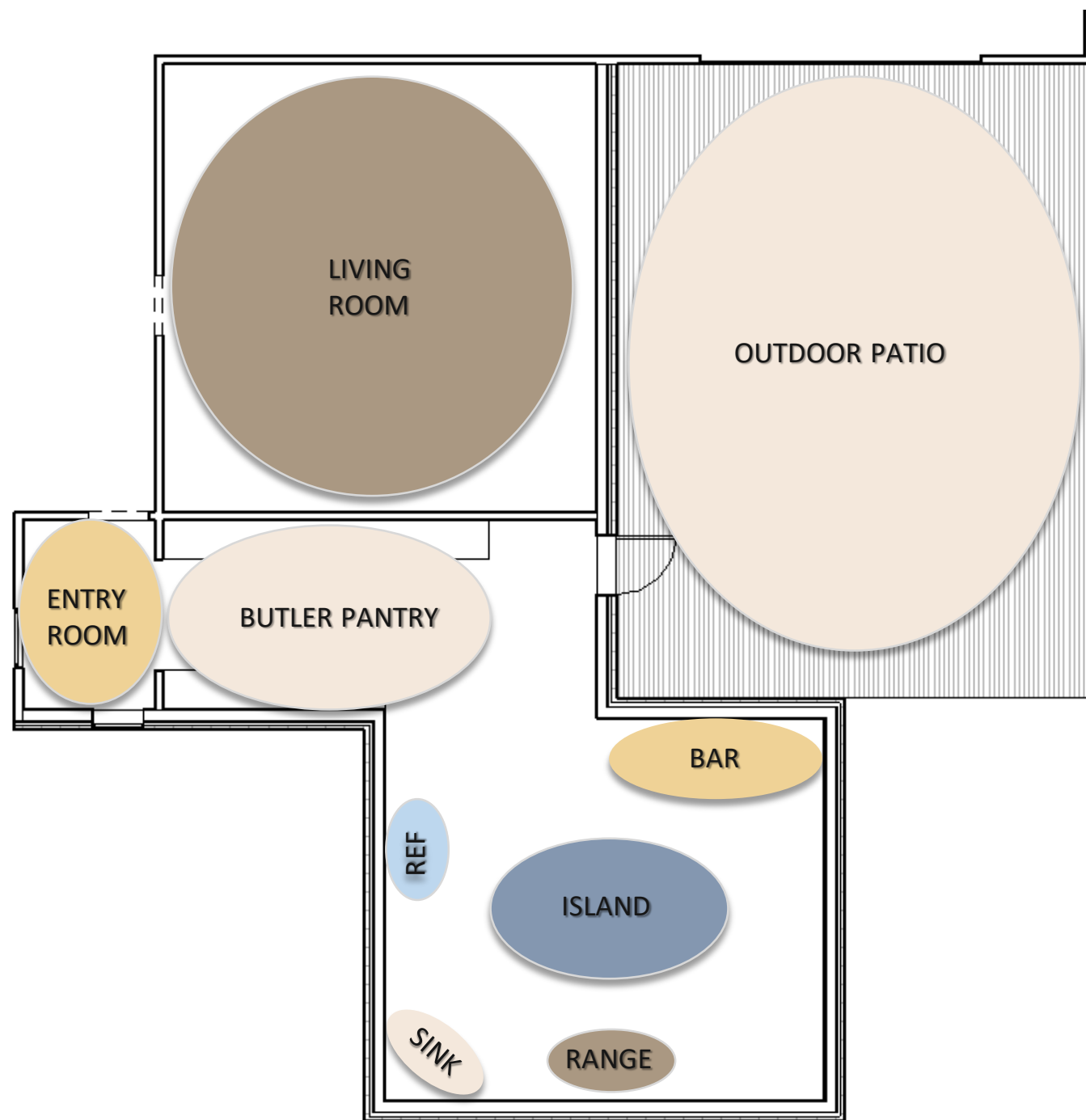
Concept Statement

The vision for this kitchen renovation is to use the current carport space to create a new kitchen. The design concept is an open, inviting, and functional space. Taking the current kitchen and creating a large butler pantry for extra storage space. The central kitchen will have new features like a large island, range with a detailed hood, and indoor-outdoor bar area. The newly renovated space will incorporate the original house's classic and traditional style. Integrating lots of color, patterns, and texture will emphasize the homeowner's style. The creation of this space will allow for more room for cooking, entertaining, and functionality for the client's daily lifestyle and activities.

Reference Board



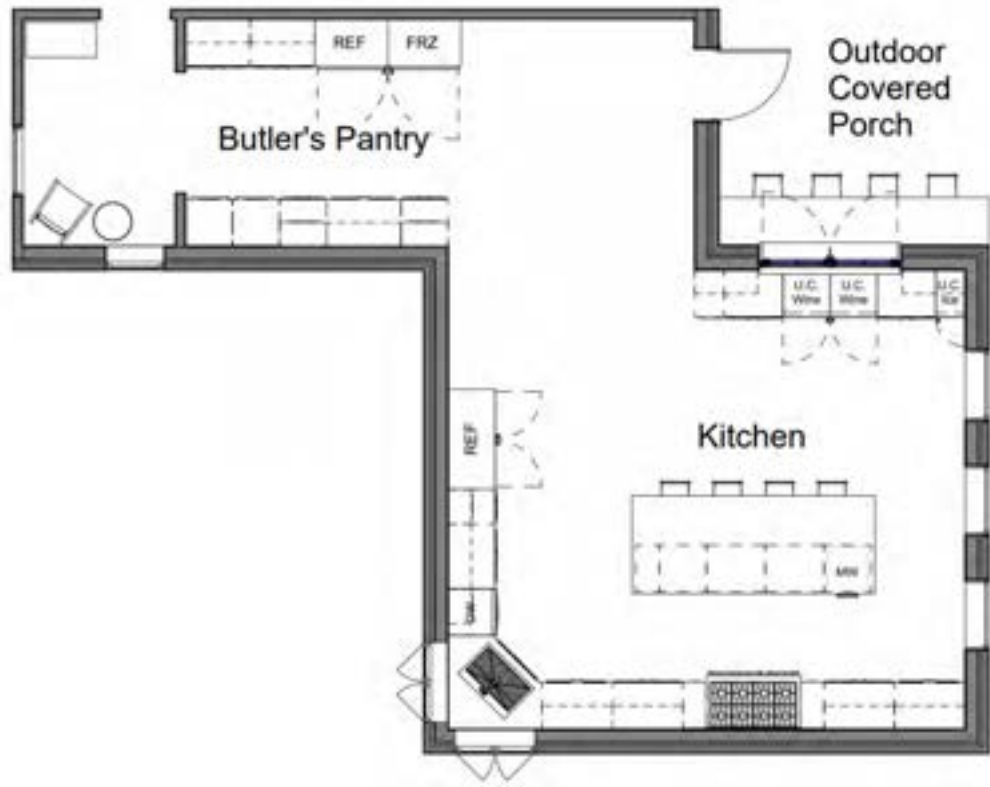
Bubble Diagram



Blocking Diagram

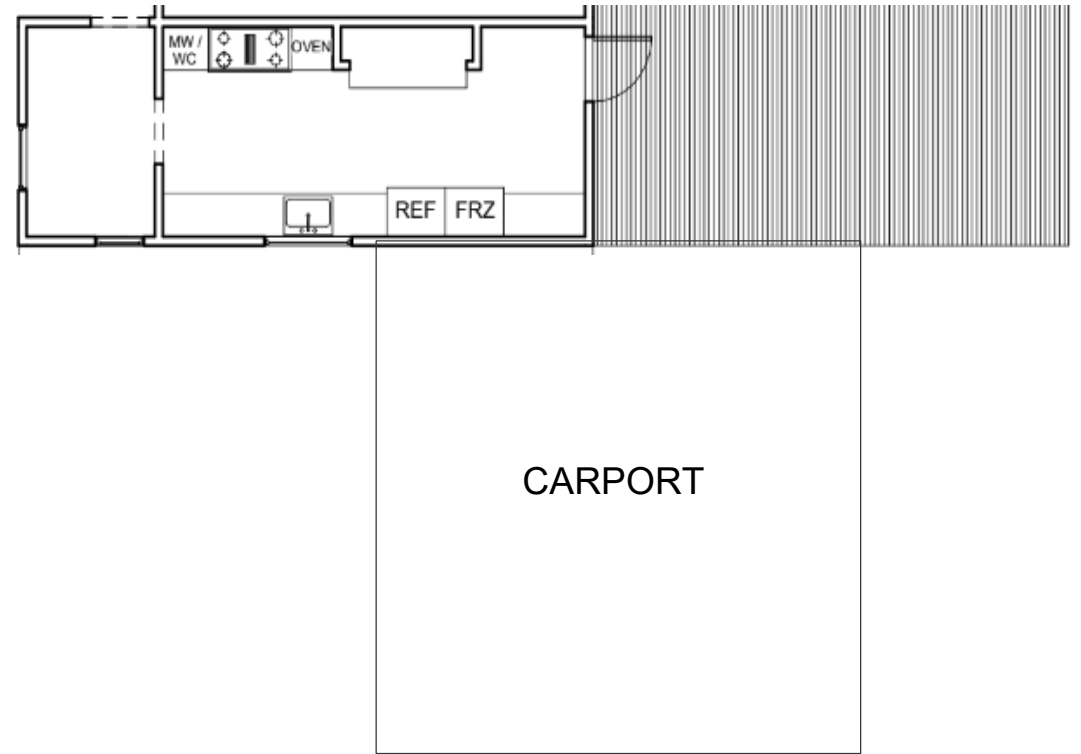


Existing/Proposed Floor Plan



Proposed Floor Plan

1/4" = 1'-0"

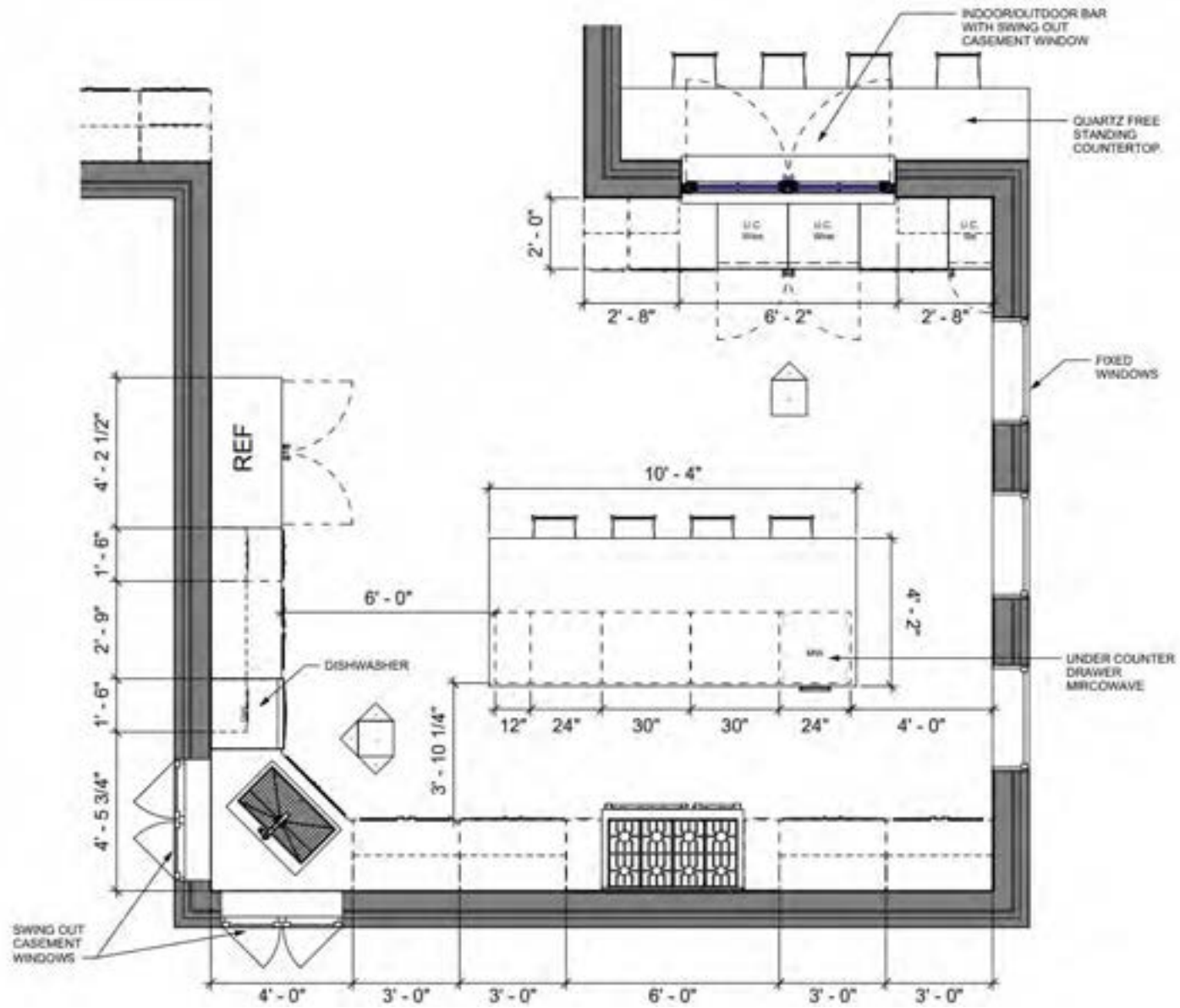


Existing Floor Plan

1/4" = 1'-0"



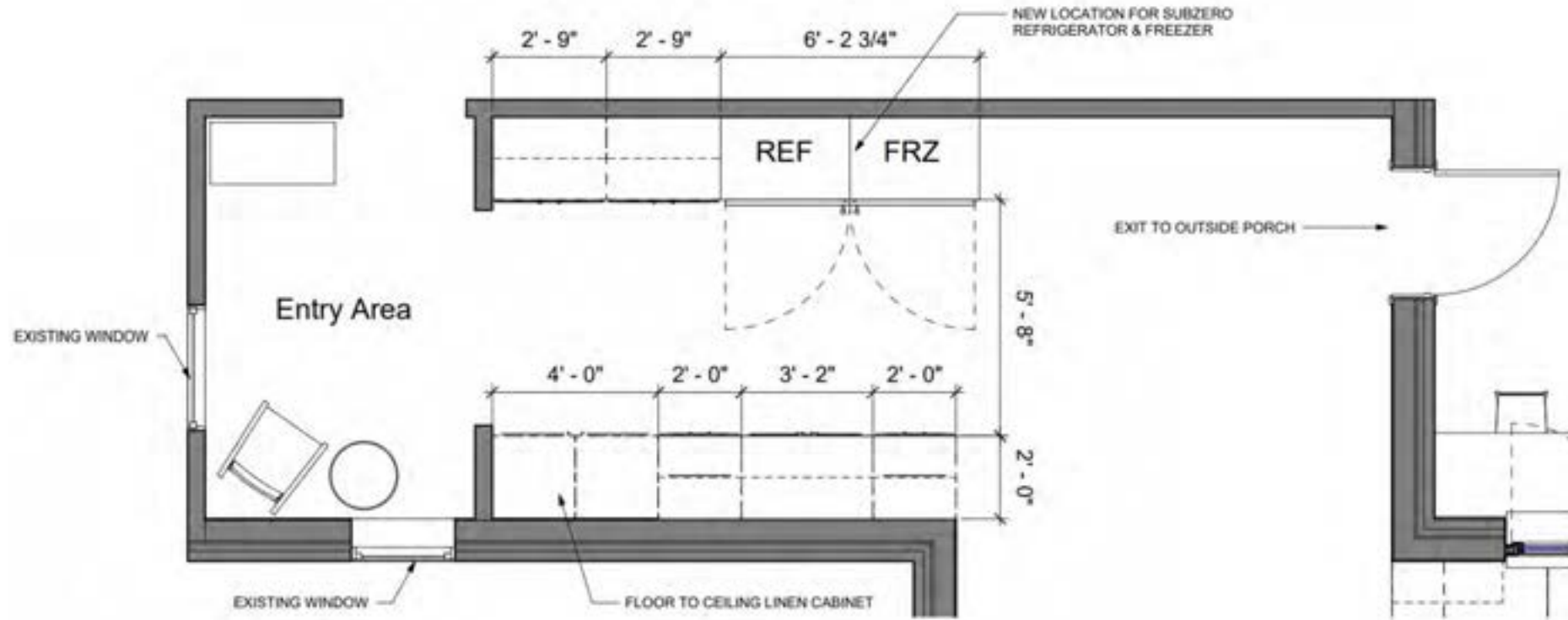
Enlarged Floor Plans



Enlarged Floor Plan - Kitchen

1/2" = 1'-0"



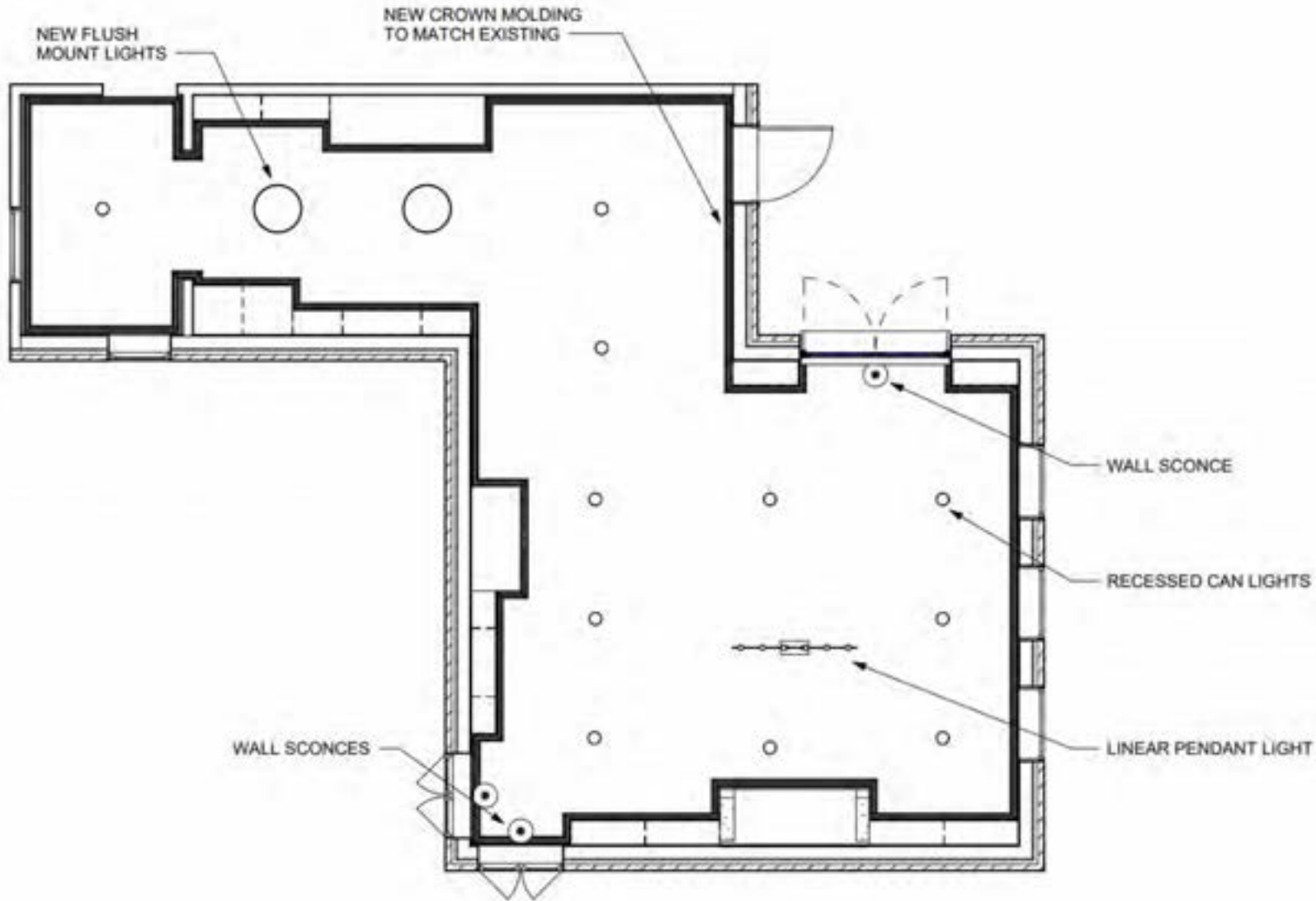


Enlarged Floor Plan - Butler's Pantry

1/2" = 1'-0"



Reflected Ceiling Plan



Pendant
 Armand 12 Light 43"
 Wide Taper Candle
 Kichler



Light
 18" Tall wall Sconce
 Capital Lighting



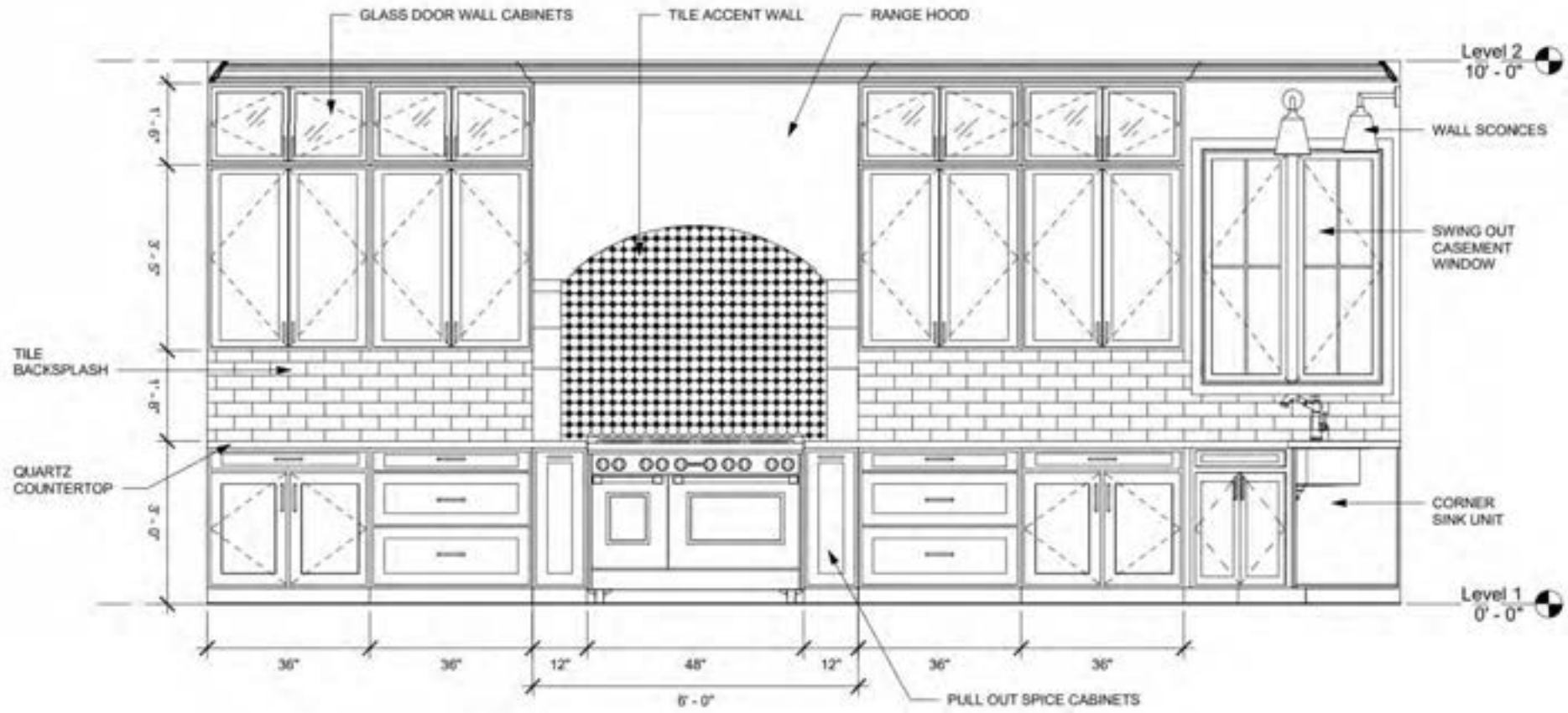
Light
 Vance 13" Wide
 Integrated LED Flush
 Mount Tech Lighting

Reflected Ceiling Plan

1/4" = 1'-0"



Detailed Elevations



Elevation - Kitchen

1/2" = 1'-0"



Cabinet Paint
Dress Blue - 9176
Sherwin Williams



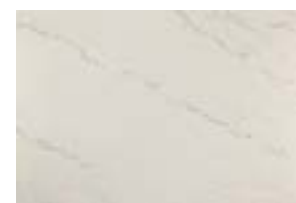
Cabinet Pull
Channing 7 Inch
Center to Center Cup
Top Knobs



Range
48" Smart Dual -Fuel with
6 Burners & Griddle
Café™



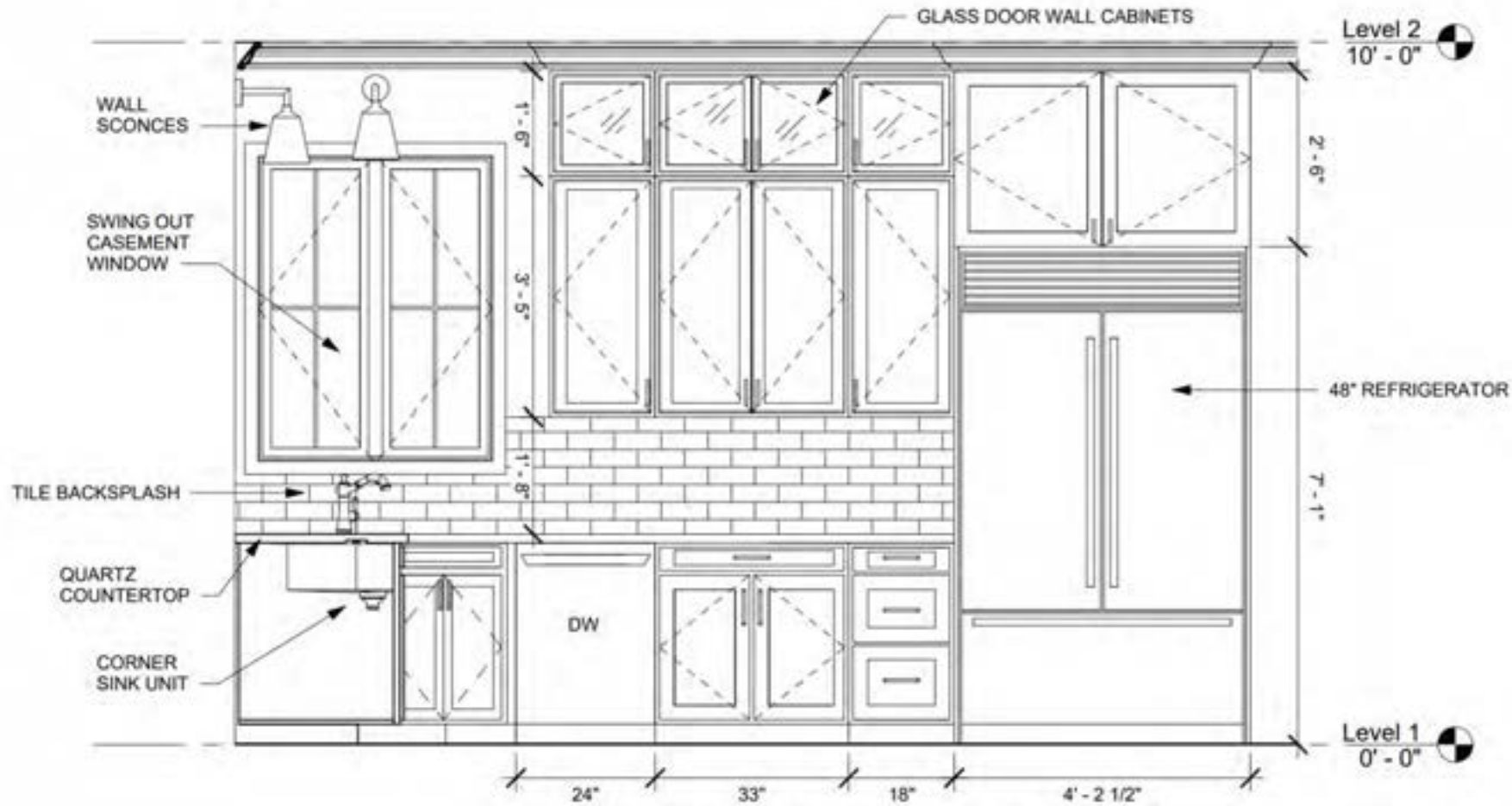
Tile Accent Wall
Octagon with Dot
Wall Tile
DalTile



Quartz Countertop
Beckington
Cambria Quartz



Tile Backsplash
Kalay White 3x12
Ceramic Wall Tile
TileBar



Elevation - Kitchen

1/2" = 1'-0"



Dishwasher
24" Stainless steel
Wolf



Light
18" Tall wall Sconce
Capital Lighting



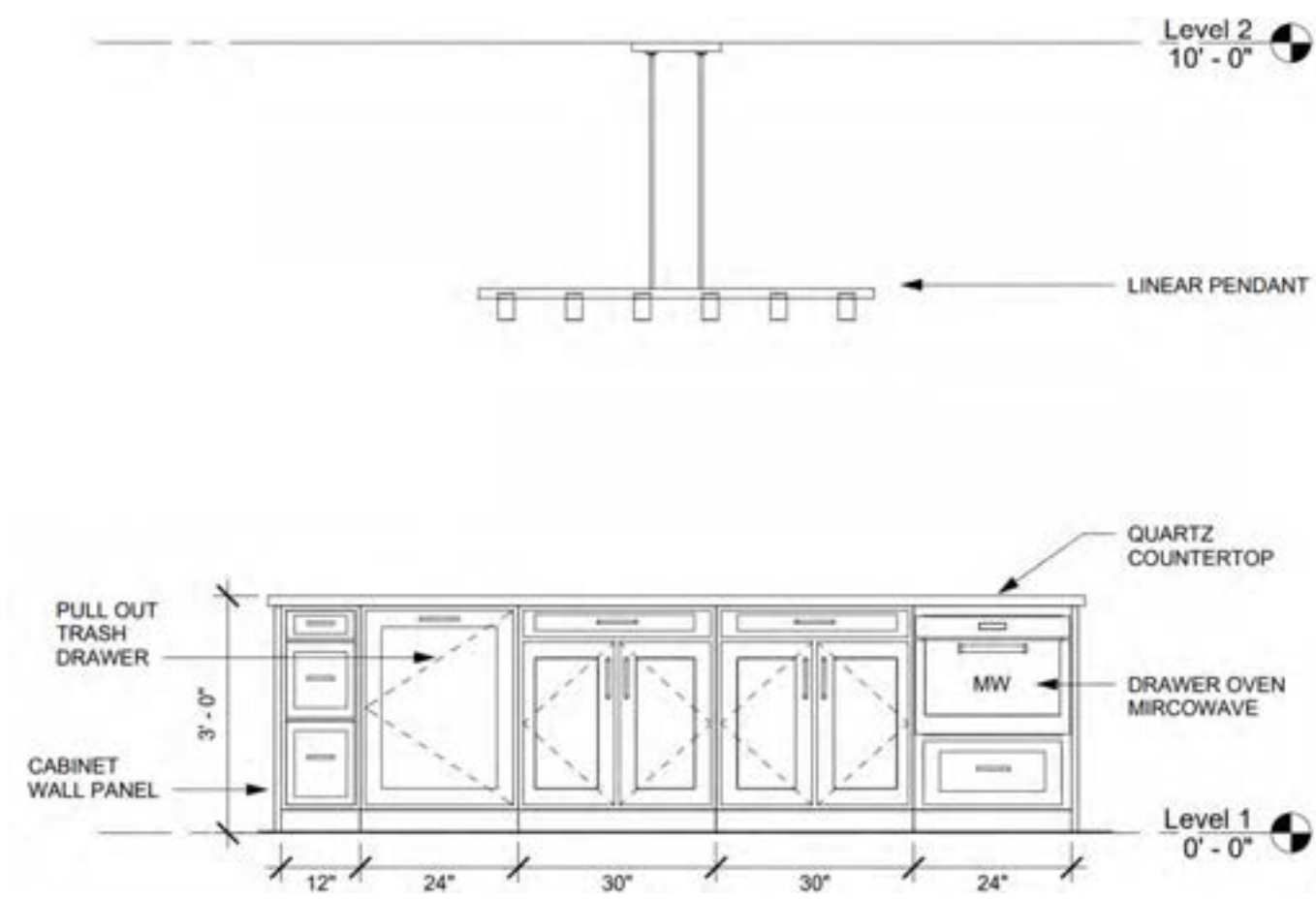
Kitchen Faucet
Jacobean Kitchen Faucet
Metal Lever Handle
Newport Brass



Under Mount Sink
Vault 33" Single Basin
Stainless Steel
Kohler



Refrigerator
48" Classic French Door
Refrigerator/Freezer
Wolf



Elevation - Kitchen Island 1/2" = 1'-0"



Cabinet Paint
Dress Blue - 9176
Sherwin Williams



Cabinet Pull
Channing 7 Inch
Center to Center Cup
Top Knobs



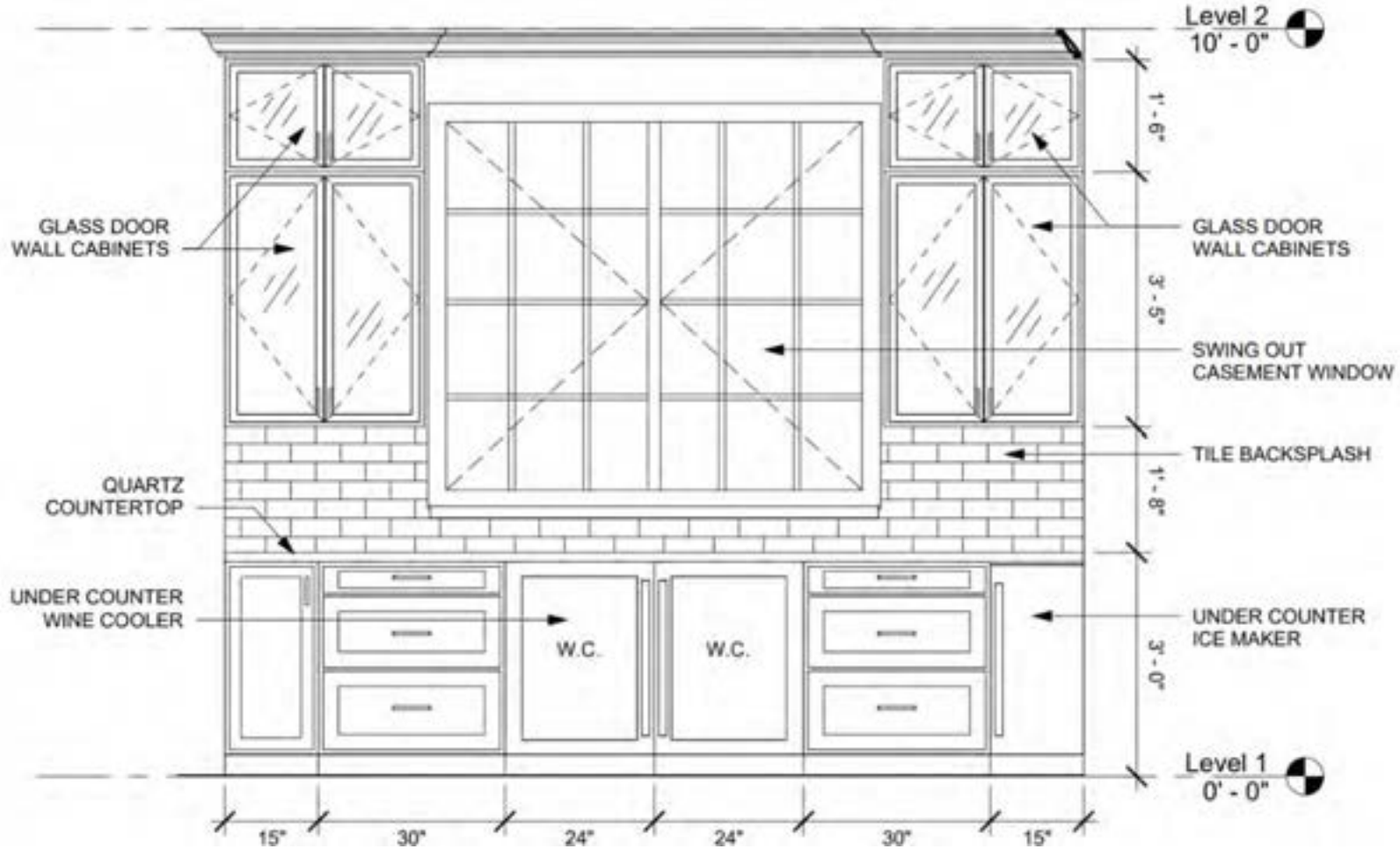
Microwave
Drop - Down Door
Microwave Oven
Wolf



Quartz Countertop
Beckington
Cambria Quartz



Pendant
Armand 12 Light 43"
Wide Taper Candle
Kichler



Elevation - Bar Area

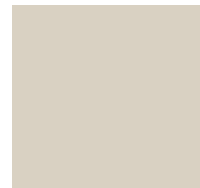
1/2" = 1'-0"



Wine Cooler
Undercounter Wine
Storage - stainless steel
Wolf



Quartz Countertop
Beckington
Cambria Quartz



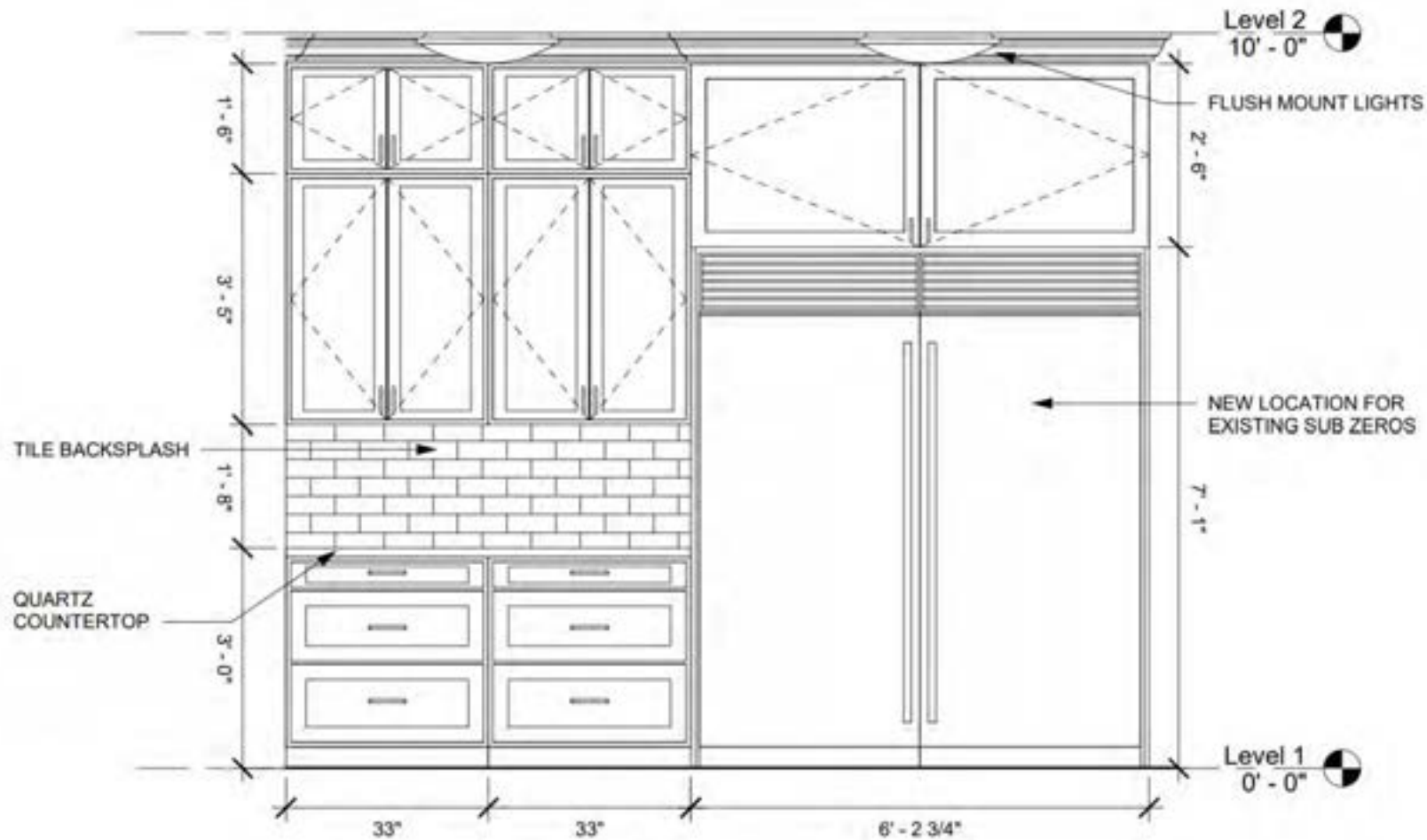
Wall Paint
Dumpling 9616
Sherwin Williams



Tile Backsplash
Kalay White 3x12
Ceramic Wall Tile
TileBar



Ice Maker
15" with Pump
Wolf



Elevation - Butler's Pantry North

1/2" = 1'-0"



Quartz Countertop
Beckington
Cambria Quartz



Tile Backsplash
Kalay White 3x12
Ceramic Wall Tile
TileBar



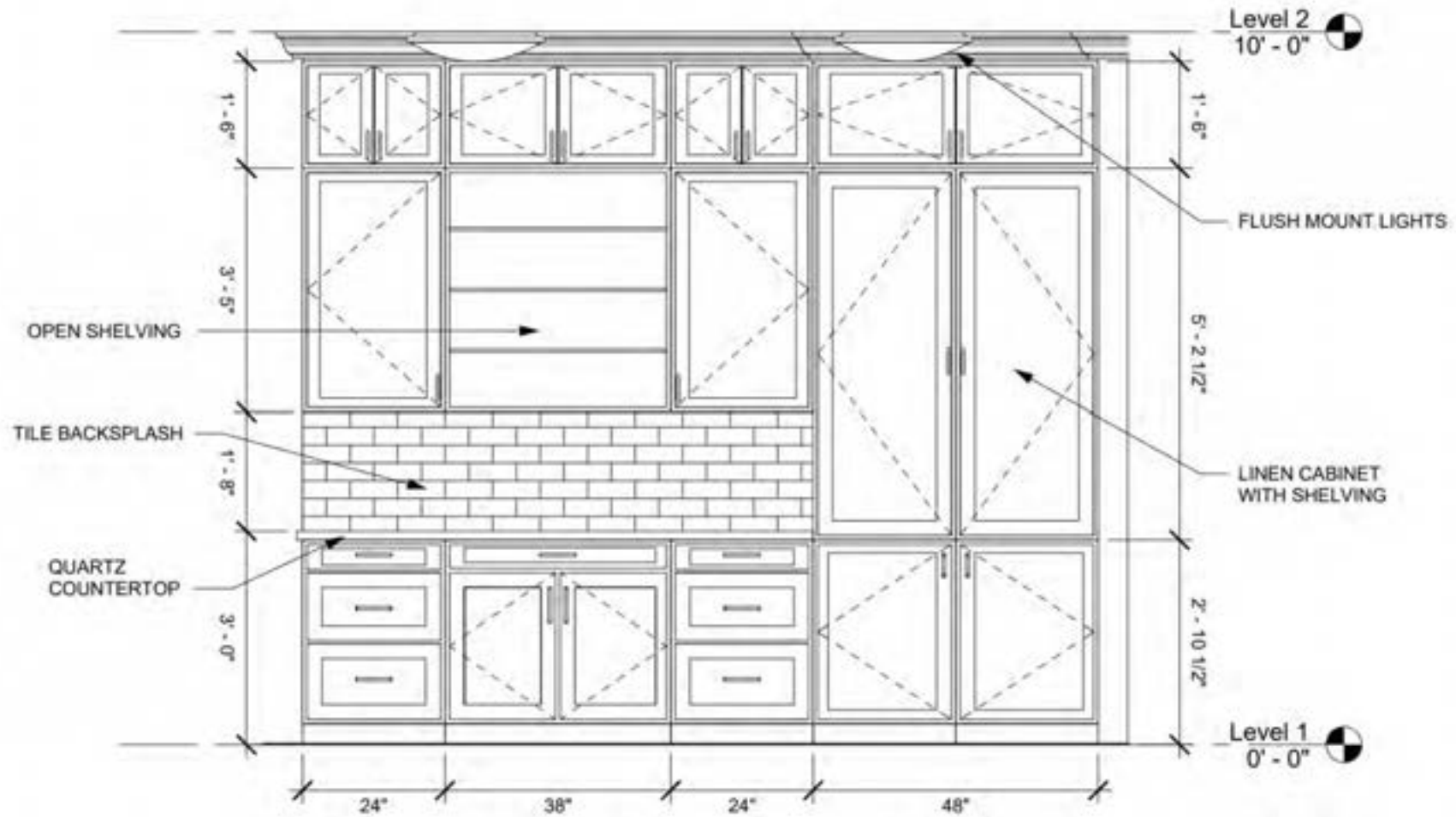
Cabinet Paint
Dress Blue - 9176
Sherwin Williams



Cabinet Pull
Channing 7 Inch
Center to Center Cup
Top Knobs



Subzero
36" Designer Column Freezer
Stainless steel
Wolf



Elevation - Butler's Pantry South

1/2" = 1'-0"



Quartz Countertop
Beckington
Cambria Quartz



Tile Backsplash
Kalay White 3x12
Ceramic Wall Tile
TileBar



Cabinet Paint
Dress Blue - 9176
Sherwin Williams

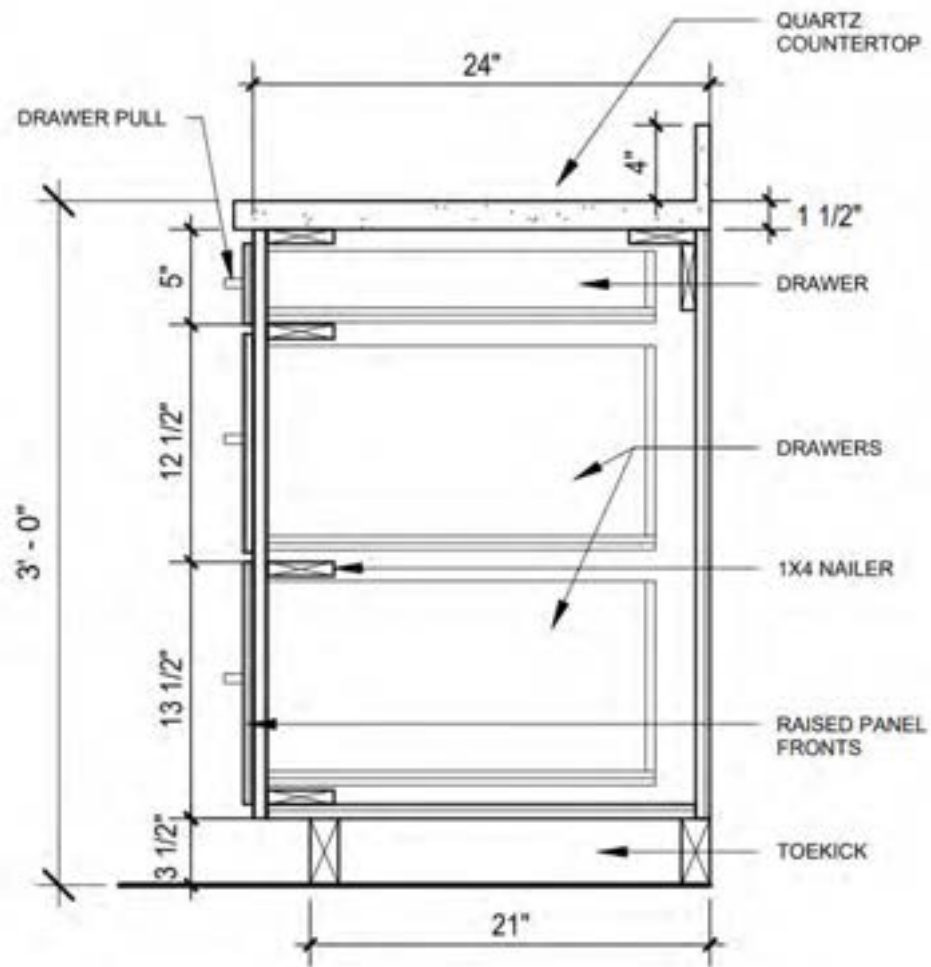


Cabinet Pull
Channing 7 Inch
Center to Center Cup
Top Knobs



Light
Vance 13" Wide
Integrated LED Flush
Mount Tech Lighting

Detailed Sections



Quartz Countertop
Beckington
Cambria Quartz



Cabinet Paint
Dress Blue - 9176
Sherwin Williams



Cabinet Pull
Channing 7 Inch
Center to Center Cup
Top Knobs

Cabinet Section

1" = 1'-0"

Perspective Renderings

Kitchen Renderings



Bar Rendering



Pantry Renderings



Specification

Appliances

- Range – Café™ 48" Smart Dual-Fuel Commercial-Style Range with 6 Burners and Griddle (Natural Gas) – stainless steel
- Refrigerator – 42" Classic French Door Refrigerator/Freezer with Internal Dispenser – Wolfe – stainless steel
- Freezer – 36" Designer Column Freezer with Ice Maker – Panel Ready – Wolfe – Stainless steel



Appliances

- Wine Cooler – 24" Designer Undercounter Wine Storage – Panel Ready (2) – Wolfe – stainless steel
- Microwave – 24" E Series Transitional Drop-Down Door Microwave Oven – Wolfe – stainless steel
- Dishwasher – 24" Dishwasher with Water Softener – Panel Ready – Wolfe – Stainless steel



Appliance

- 15" Ice Maker with Pump – Panel Ready



Hardware & Faucet

- **Cabinet Hardware – Top Knobs Channing 7 Inch Center to Center Cup Cabinet Pull from the Barrington Series**
- **Sink – Kohler Vault 33" Single Basin Top-Mount/Under-Mount 18-Gauge Stainless Steel Kitchen Sink with SilentShield**
- **Faucet – Newport Brass Jacobean Kitchen Faucet with Metal Lever Handle and Pull-down Spray**



Lighting

- Over island lighting – **Kichler** Armand 12 Light 43" Wide Taper Candle Chandelier
- Recessed can lighting – **Elco** 4 Inch LED Bi-Pin Retrofit Insert Baffle Trim // 2700 K – 5000 K



Countertop & backsplash

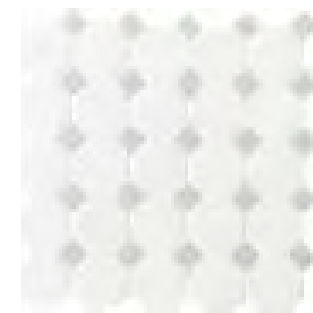
Countertop – Beckington –
Cambria Quartz



Backsplash – Kalay White 3x12
Glossy Ceramic Wall Tile



Backsplash Vent hood –
Daltile Octagon with Dot – 2" x 2"
Octagon Wall & Floor Tile – Varied
Tile Visual – Sold by Sheet



Flooring

- Pantry Flooring - **Affinity**
Tile Ruzzini - 17-7/8" Square
Tile - Textured Visual - Sold
by Carton (11.1 SF/Carton)
- Wood kitchen flooring - Bruce
NATURAL SELECT RED OAK
SMOOTH SOLID HARDWOOD



Paint Selections

- 1. Dumpling – Sherwin Williams 9616 – Walls
- 2. Dress Blue – Sherwin Williams – 9176 – Cabinets
- 3. Shoji White – Sherwin Williams – 7042 – Trim and windows

