



# CONDO PROJECT DES 282.01 SP23

Professor Jerome Gomez  
**Reilly Richmond**



Bessie & Miriam are two best friends, more like sisters, both at the ripe age of 82. Bessie is a witty and lovable African American woman from Winston-Salem, North Carolina. She graduated from UNC Chapel Hill with a bachelor's degree in early childhood education. From there, Bessie applied and got accepted into Columbia University, where she met Miriam, and earned a master's degree in education. Miriam is an enthusiastic, ambitious Caucasian-Jewish woman from Long Island, New York. Miriam worked as a waitress to pay her way through community college and eventually earned her bachelor's degree. She met Bessie at Columbia while she was on track to earn a master's degree in Jewish Studies. Although they moved away from each other after finishing their Master's, they kept in touch over the years. Both women agreed to move in with each other after their husbands had passed, and so they decided to create a new life for beyond their retirement years. Most of their lives they have lived in cold weather so they decided their new home would be in the Florida Keys, specifically Islamorada, Florida. The windows throughout the condo allow for lots of natural light which is highly requested by both women. The different views consist of an aquamarine ocean, white sandy beach, and a small cove on one side that catches the sunset.

# CLIENT PROFILE

# Design Concept

I want to create a space where the outside and inside equally share part in the design. The aesthetic should convey a coastal influence, observing colors such as the surf, sand, and native flora. The Clients are looking for a serene modern style, far from tacky nautical design.

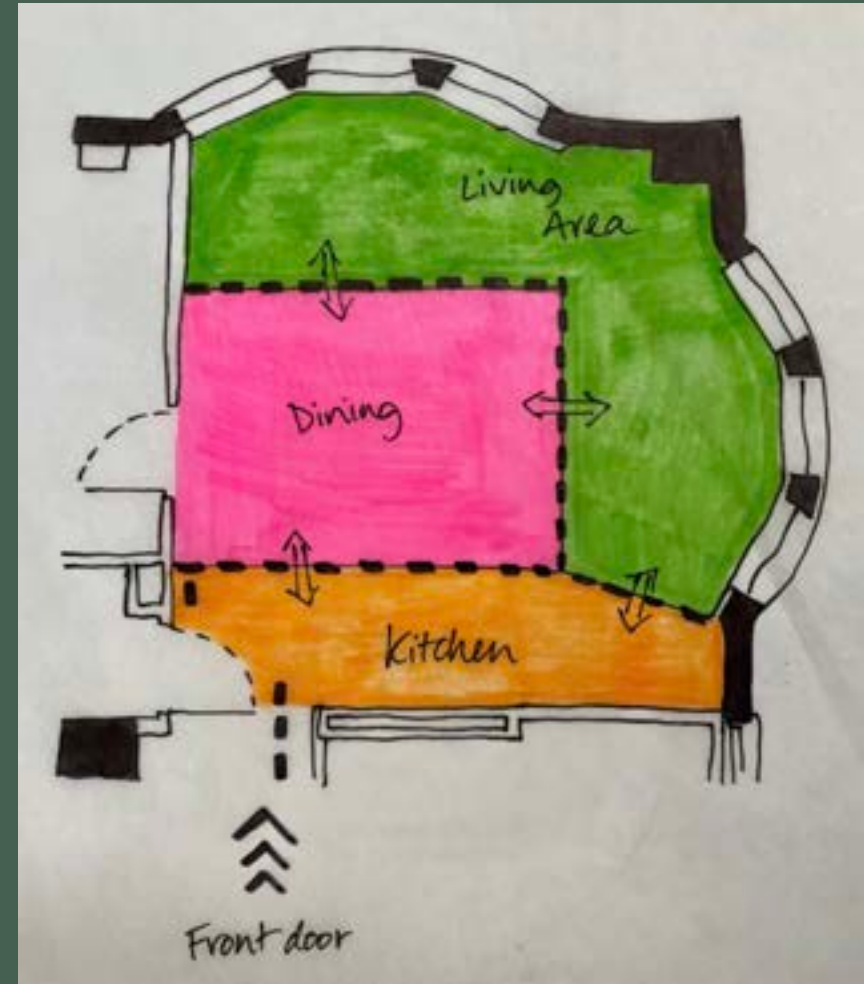
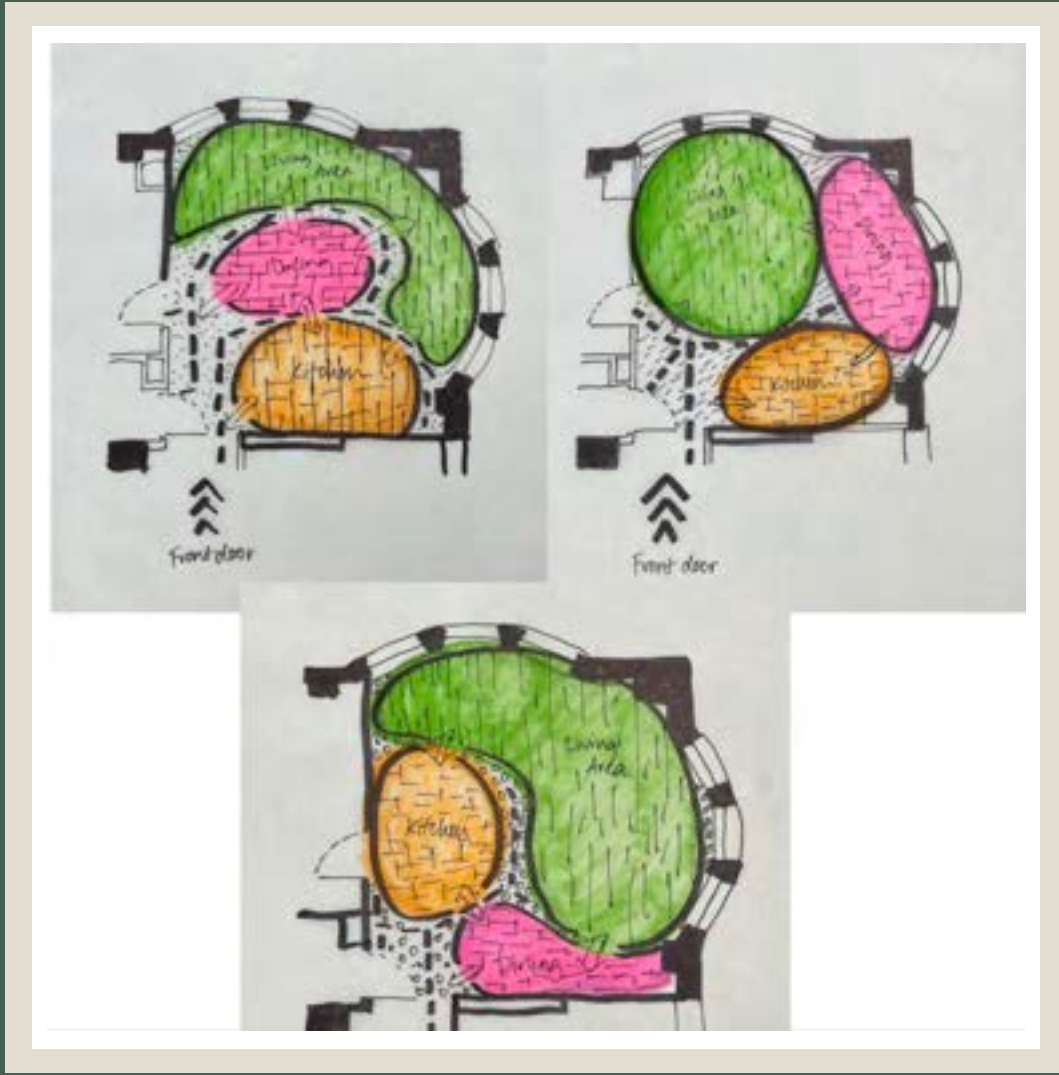
Cozy – Complimenting textures of wool and velvet allow the visitor to absorb the refined space and find a comfortable niche to spend their day at.

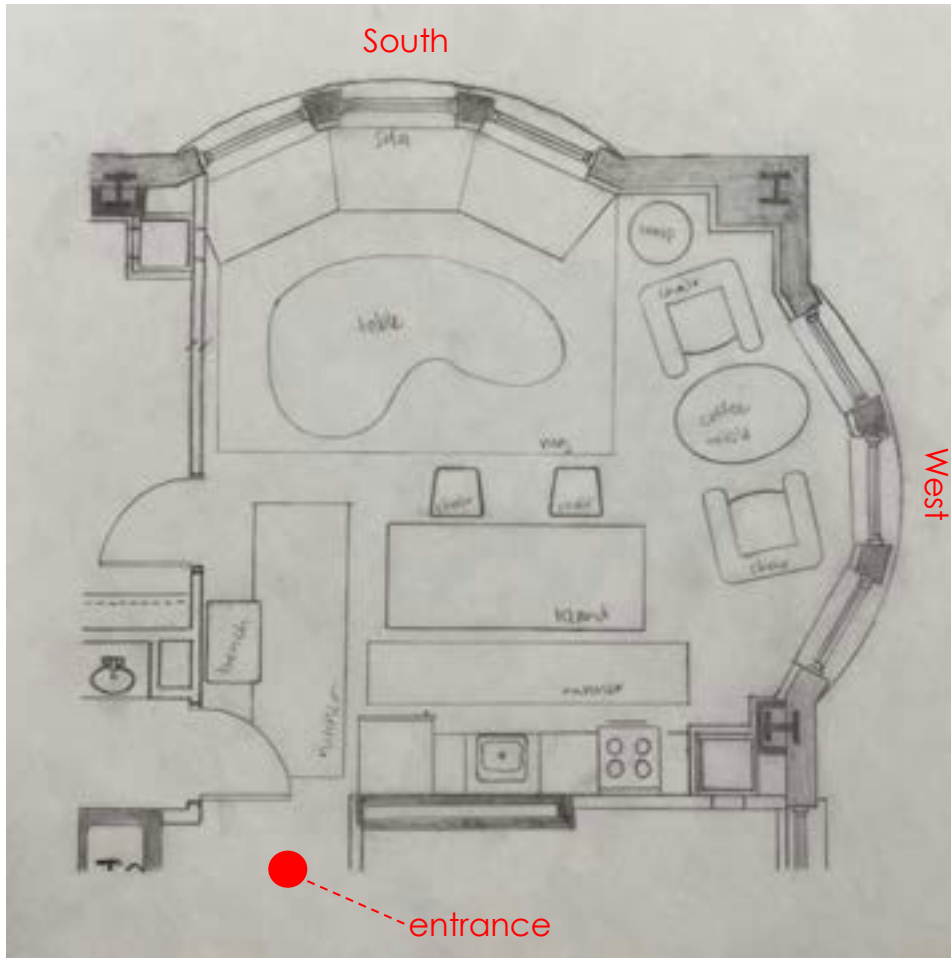
Bold – Earthy colors help invite the exotic hues of Florida inside, reflecting the ocean, beach, sunshine and wildlife life.

Welcoming – Composed of an open, airy room, whether it's Sunday brunch or game night, there is a place for everyone.



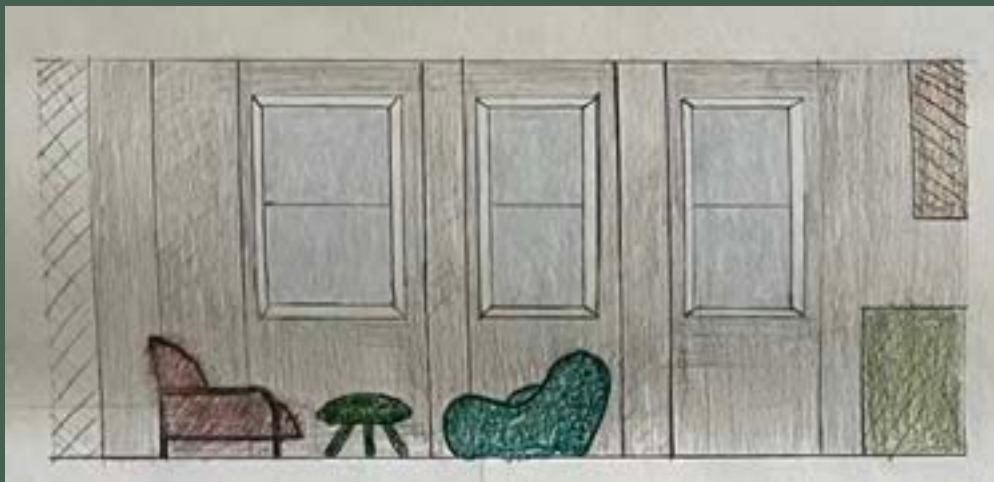
# Bubble & Blocking



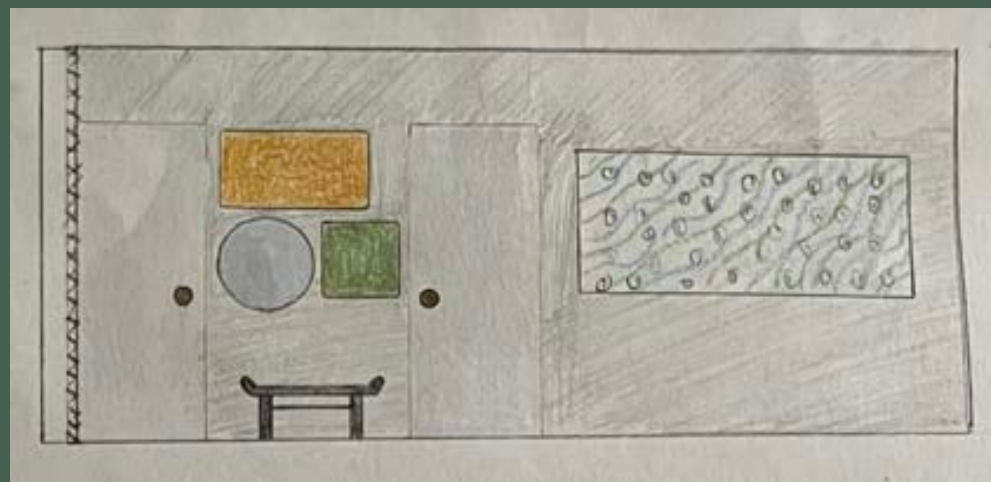


# Floor Plan

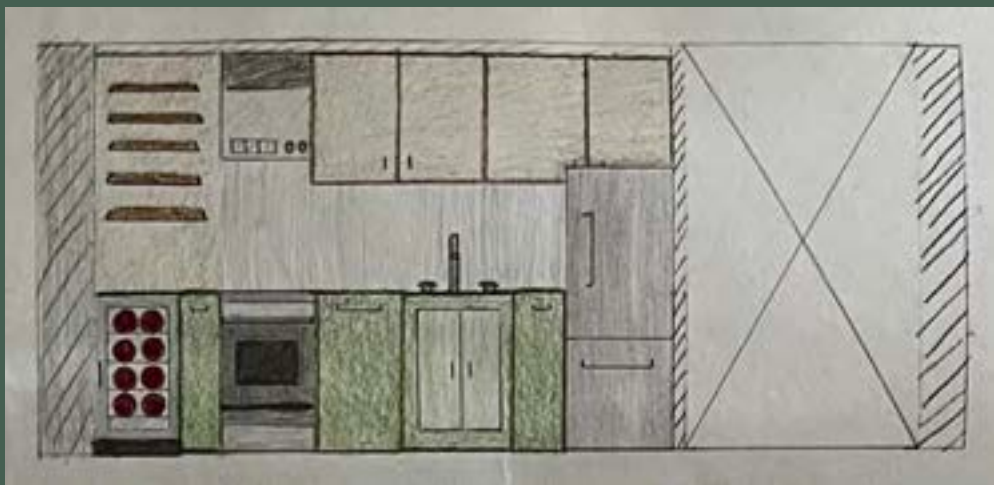
# Elevations



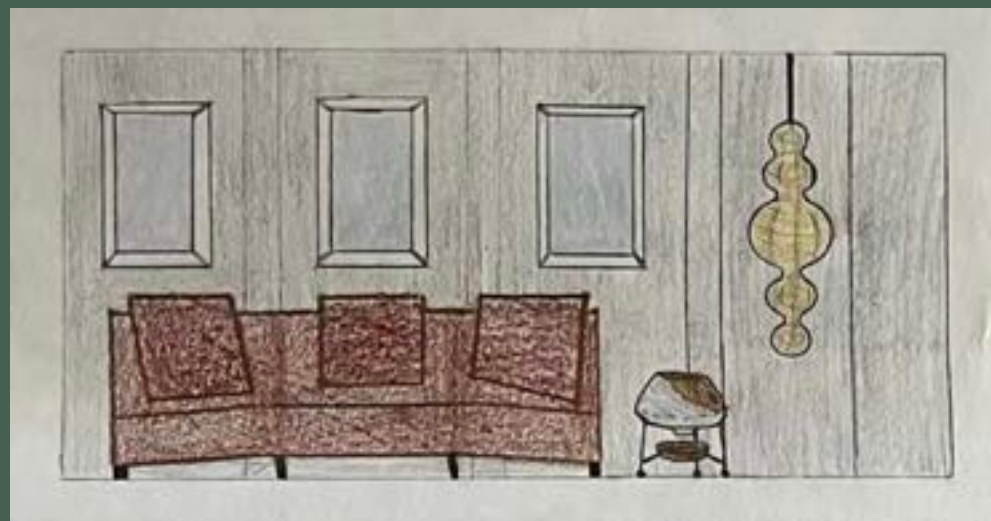
$\frac{1}{4}'' = 1'-0''$



$\frac{1}{4}'' = 1'-0''$

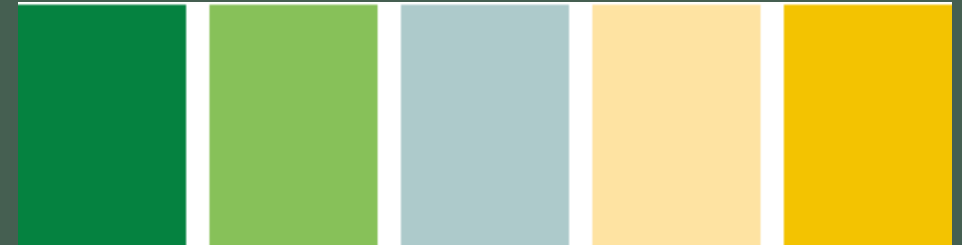
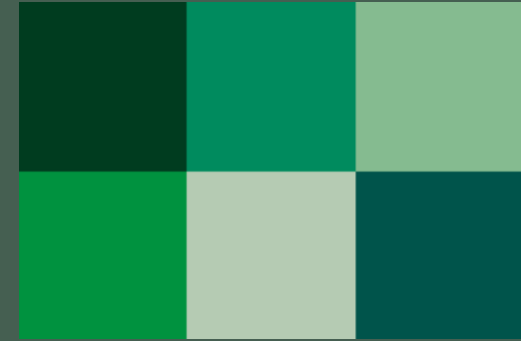
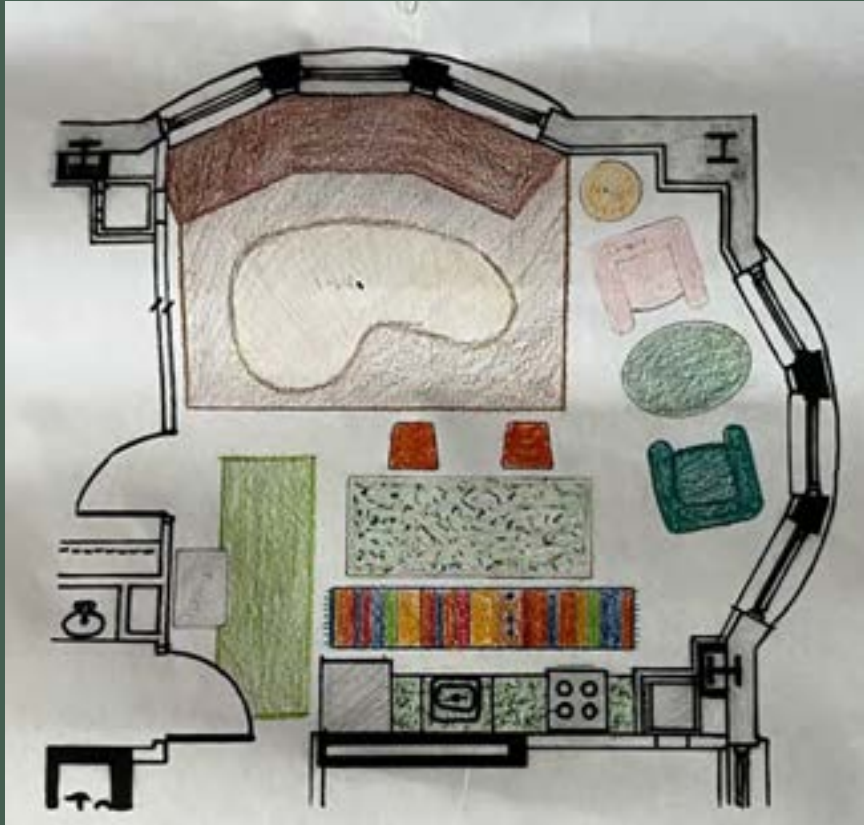


$\frac{1}{4}'' = 1'-0''$



$\frac{1}{4}'' = 1'-0''$

# Color scheme



Working with an analogous color scheme, I wanted to bring the natural hues of Florida inside. Including lush greenery and a pop of yellow-orange to reflect the energizing sunshine. Subtle blues are added to compliment the ocean view.





Flooring inspiration  
-Lighter-toned wide plank



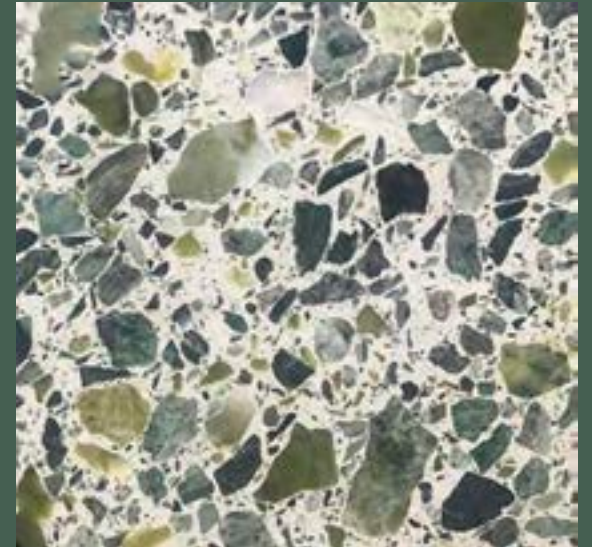


KITCHEN

# Sink inspiration



- Integrated, single basin
- Terrazzo on kitchen counter including island



## Fixtures

**Brand:** Delta  
**Finish:** Arctic Stainless  
-single handle pull out wand  
(ADA compliant)



# Appliances

**Brand:** GE

**Finish:** Stainless Steel

**Dimensions:** 70" H x 23.5" W

- Bottom-Freezer Refrigerator



**Brand:** GE

**Finish:** Stainless Steel

**Dimensions:** 36.25" H x 30" W

-Slide-In Front Control Gas  
Double Oven Range



**Brand:** Signature

**Finish:** Stainless Steel

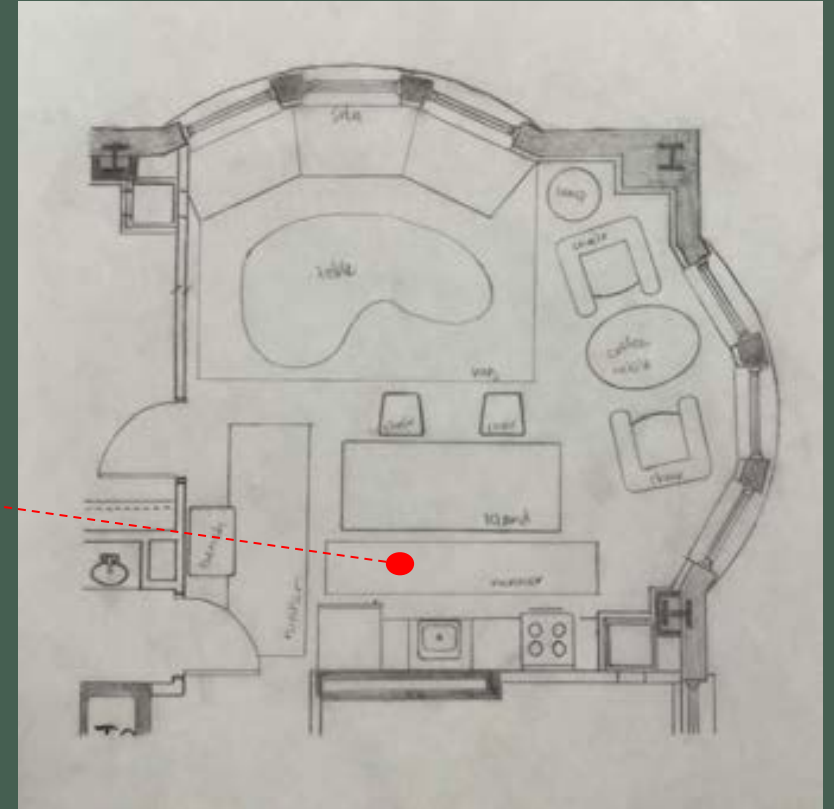
**Dimensions:** 35" H x 12.6" W

- Built-in Undercounter Wine  
Refrigerator

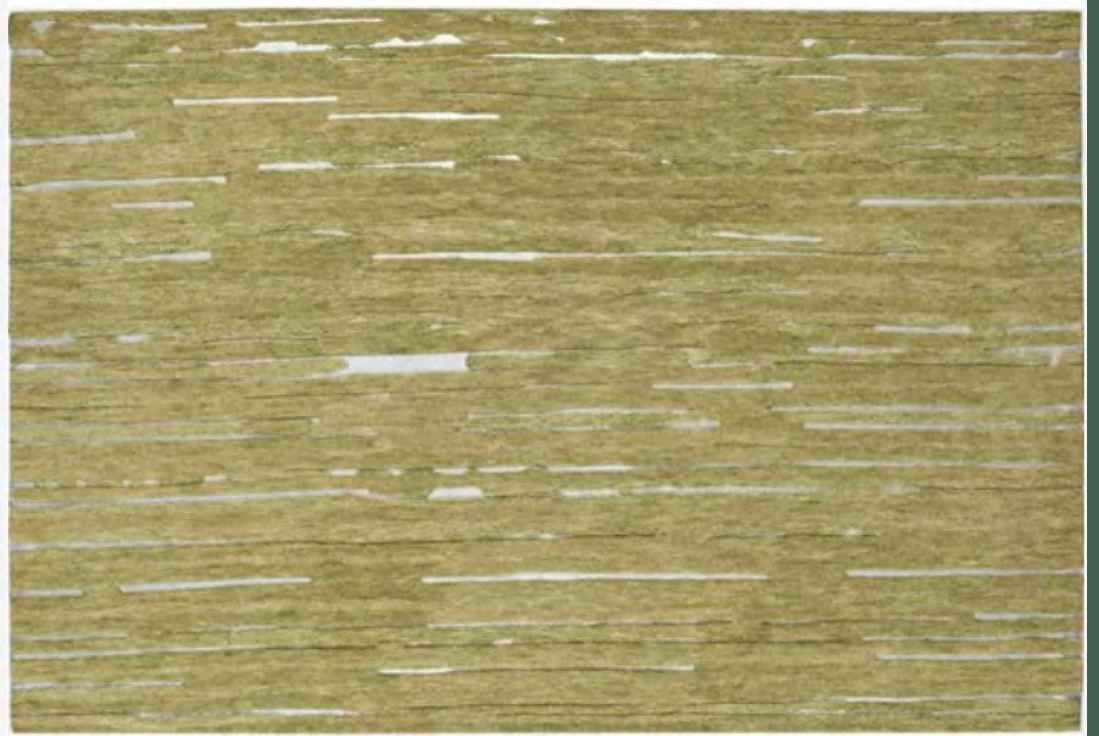
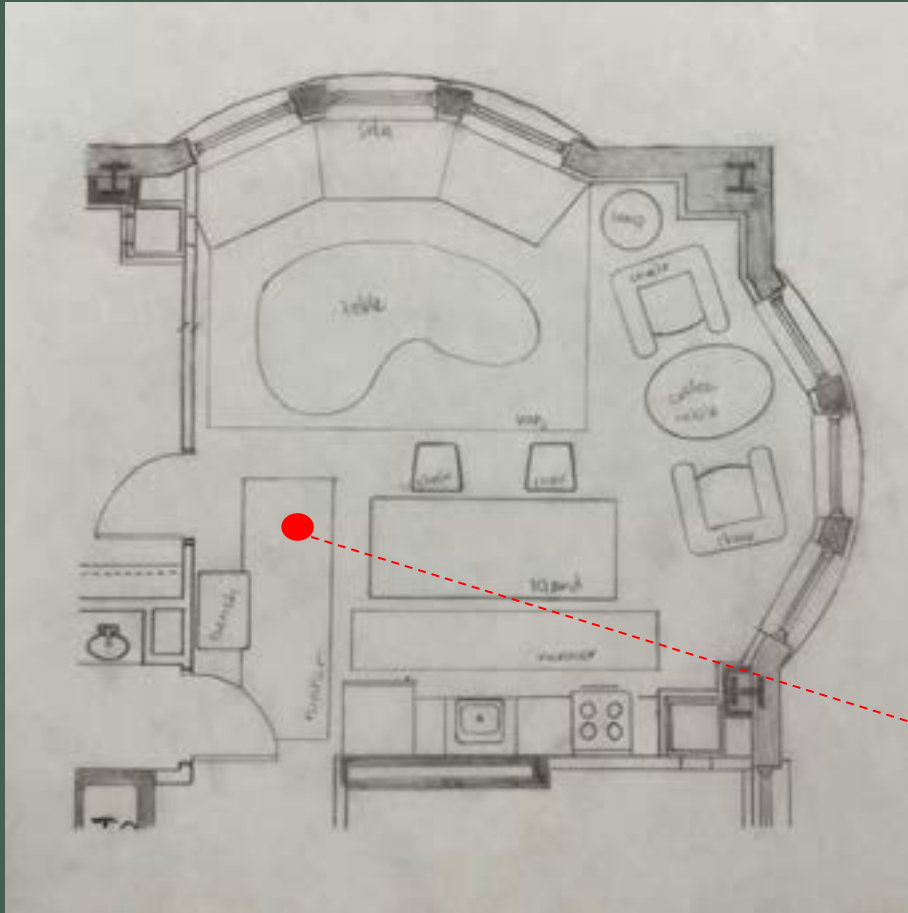




**Brand:** Perigold (Bokara Rug Co.)  
**Material:** Wool  
**Dimensions:** 2'9" x 8'4"  
- Handmade Moroccan Area Rug in  
Brown/Orange/Blue







**Brand:** Living Spaces

**Material:** Wool

**Dimensions:** 8' x 3'

- Statement rug in the foyer,  
metallic base layered in lime



Ivory Sherpa

**Brand:** All Modern

**Material:** Solid Oak, polyester

**Dimensions:** 17" H x 49" W

- Yohali Bench, tufted cushion
- Neutral, soft upholstery with brass cap legs

**Brand:** CB2

**Material:** Velvet

**Dimensions:** 34" H x 25" W

- Cotton/poly velvet, Iron frame with black powder coat



WELLS, BROWN  
VELVET





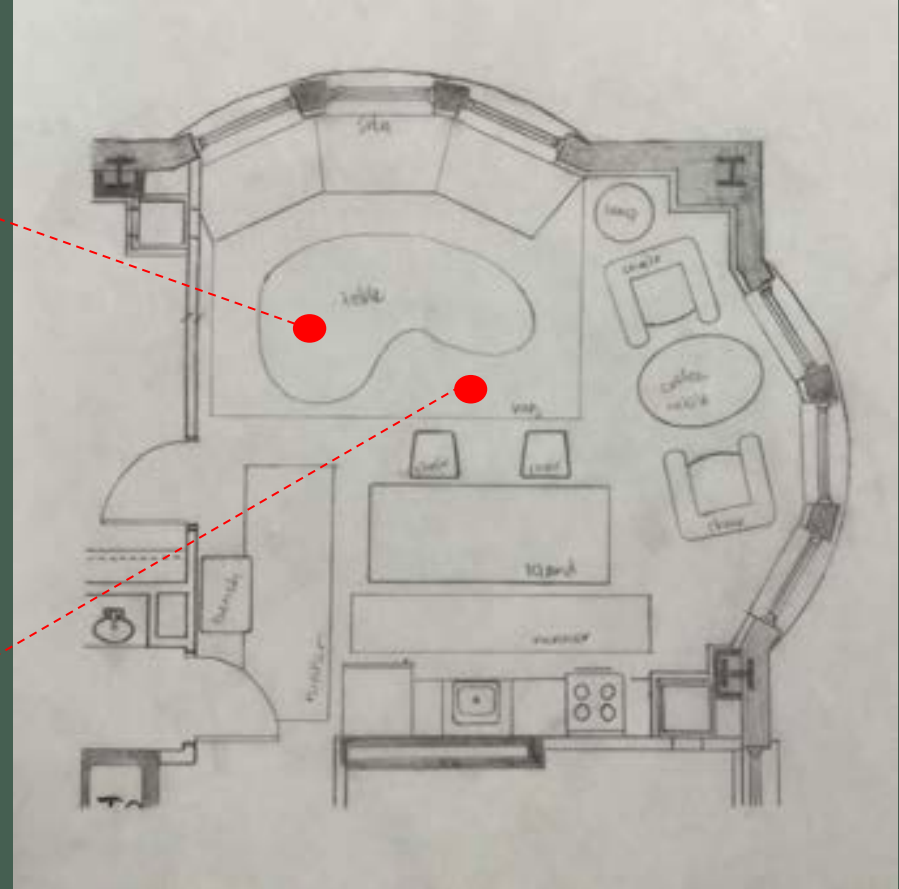
LIVING AREA



**Brand:** Crate & Barrel  
**Material:** Concrete/wood  
**Dimensions:** 15.5" H x 68.25" W  
- Set of 2, contemporary meets organic, naturally occurring wood grain swirls in mappa burl veneer



**Brand:** Perigold  
**Material:** Wool  
**Dimensions:** 7'10" x 9'8"  
-Contemporary eclectic ivory wool area rug







**Brand:** CB2

**Material:** Velvet

**Dimensions:** 31" H x 102.25" W

- Metric Quarter Octagon Corner Sofa Model, metal legs with black Satin finish



NOVA, CHESTNUT  
VELVET

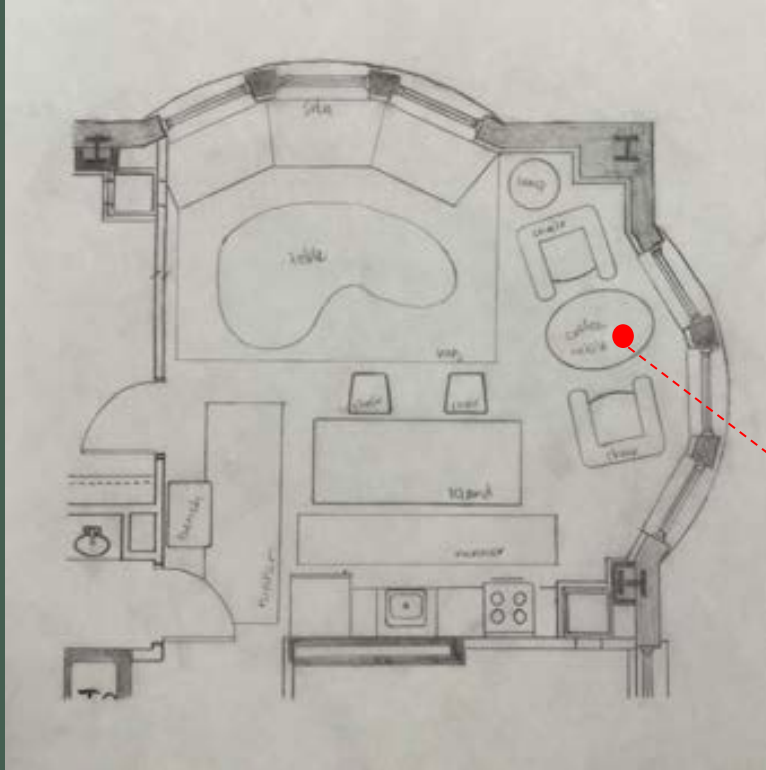


Brand: Target

Medium: Woven Reed

Dimensions: 72" H x 72" W

-Roll up shades, unpeeled and polished appearance lets in soft light and lets in a breezy feel



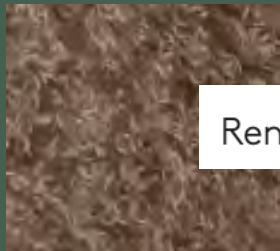
**Brand:** CB2

**Medium:** Marble

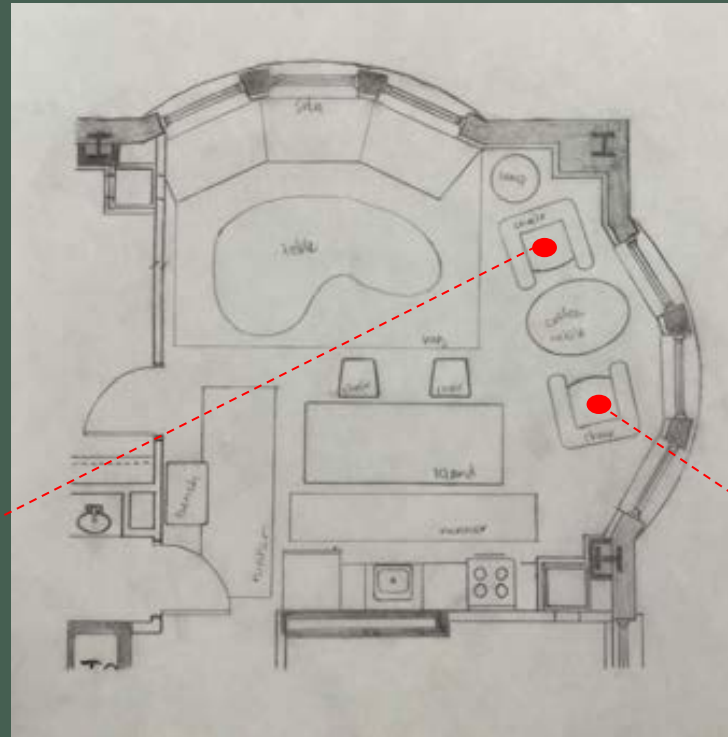
**Dimensions:** 14" H x 16" Diameter  
-Jaxx green marble side table



**Brand:** CB2  
**Medium:** Sheepskin  
**Dimensions:** 29" H x 34" W  
-Mongolian sheepskin, blackened brass metal



Ren Grey



KASHMIR JADE



**Brand:** Baxter  
**Medium:** Leather  
- Polish leather carried out on Whole full grain hides of native American bulls

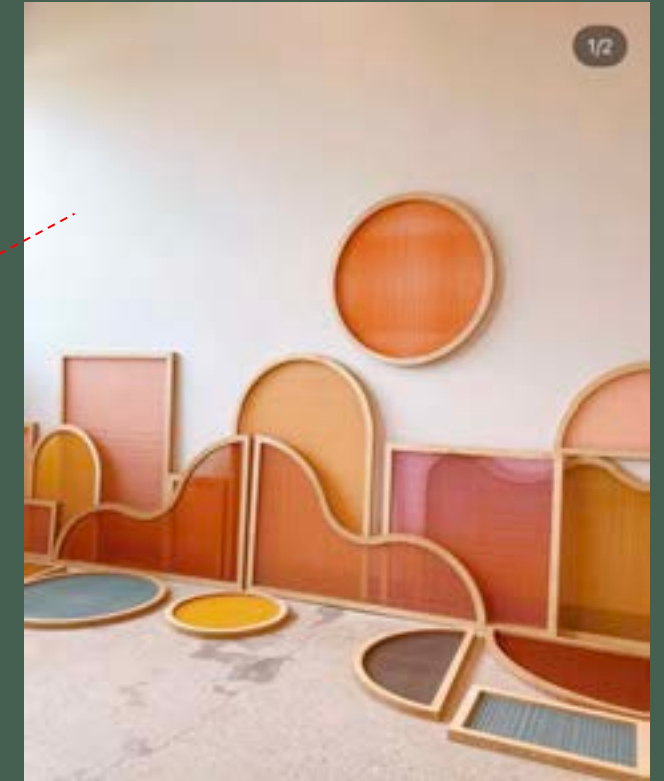
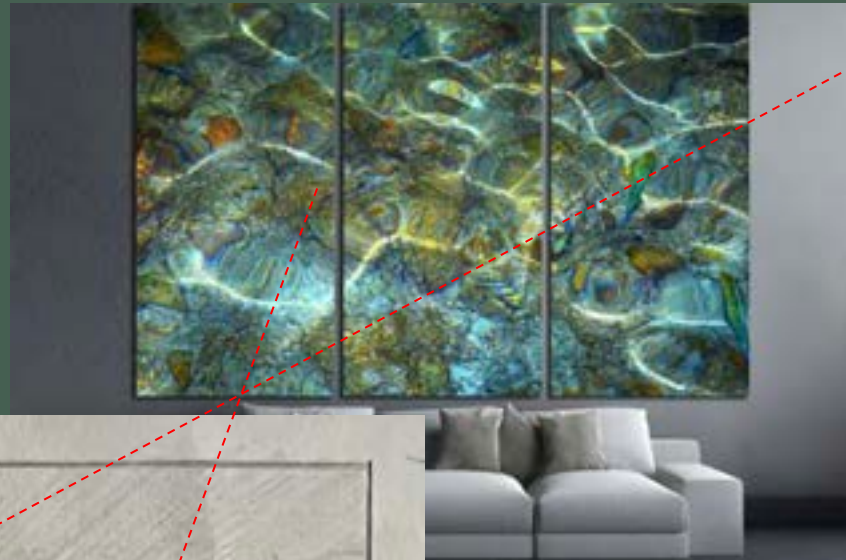


EXTRA

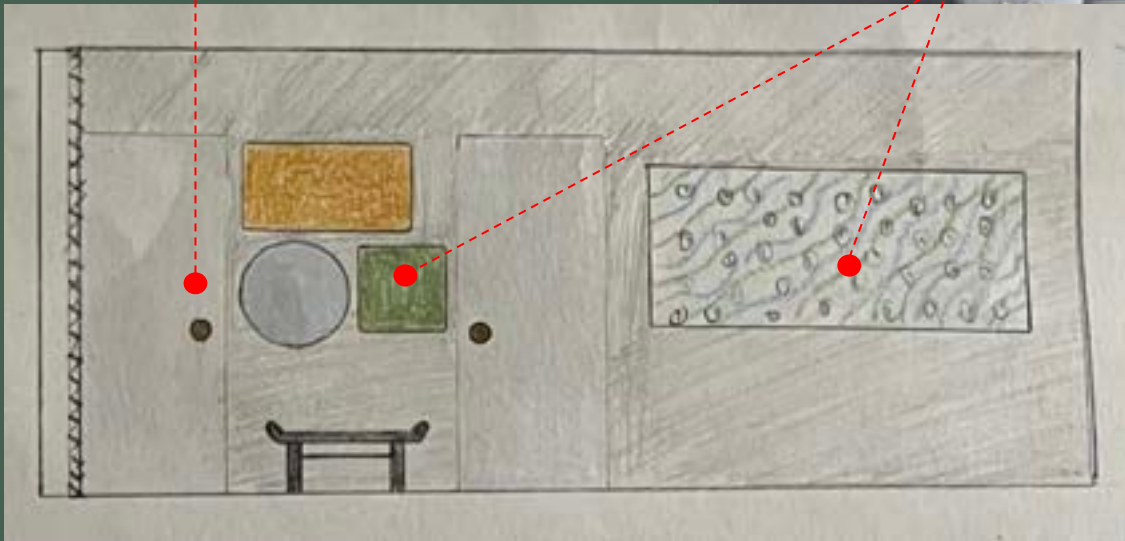




Doorknob inspiration

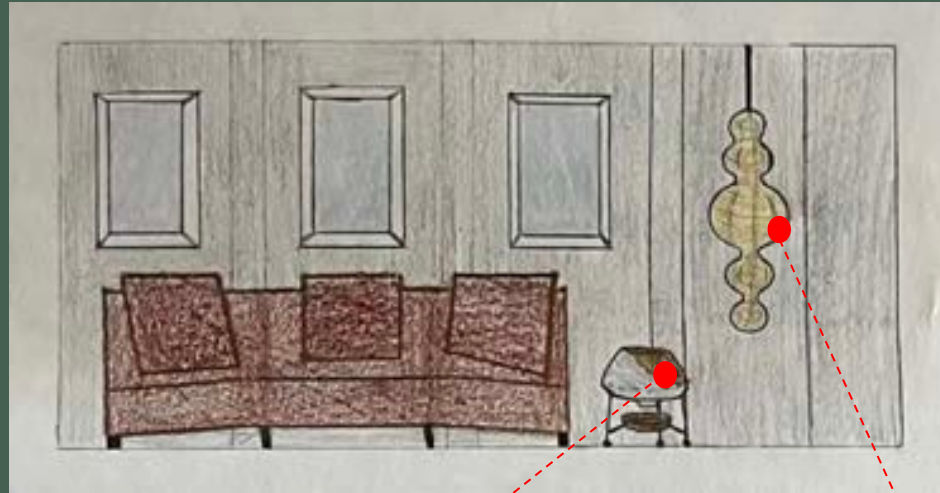


Art piece inspirations





**Brand:** Sage & Sill  
**Material:** Glazed terracotta/metal  
**Dimensions:** 12" H x 9" Diameter  
- White dipped clay teardrop pot with saucer stand



**Brand:** Akirastudioart  
**Medium:** Rice paper  
**Dimensions:** 32.6" H x 17.7" W  
-Noguchi Wabi Sabi Inspired Paper,  
Japanese Style, Irregular Shape