

# CAROLINE KLEIN

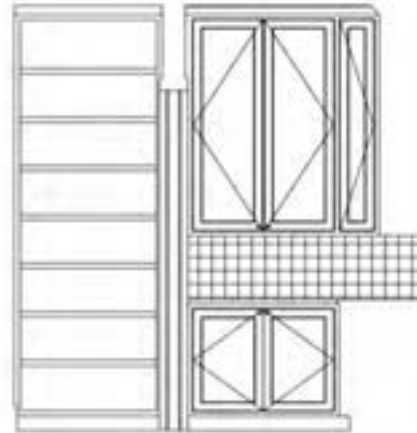
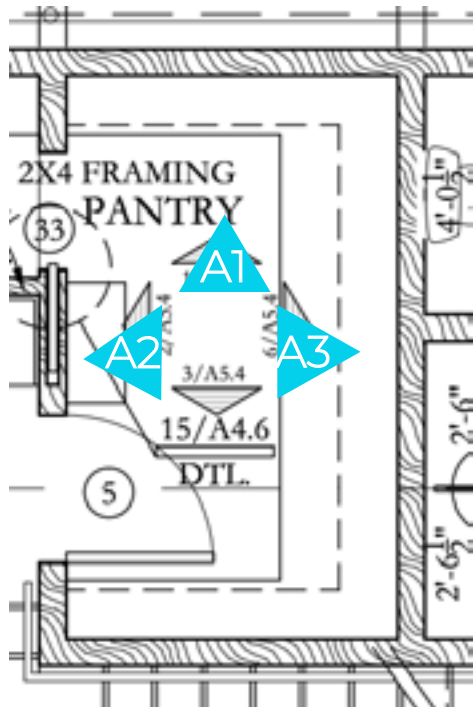
INTERIOR DESIGN  
PORTFOLIO

# INDEX

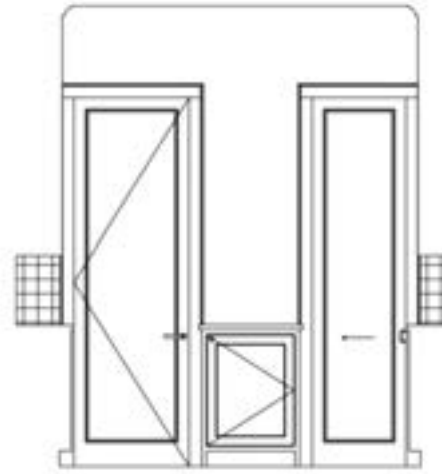
Professional Experience	
<a href="#">Tile Drawings</a> .....	3
Commercial Design	
<a href="#">Coffee Shop</a> .....	6
<a href="#">Bookstore</a> .....	11
Residential Design	
<a href="#">Milhaven House</a> .....	12
<a href="#">Microhouse</a> .....	15
<a href="#">Architectural Illustrations</a> .....	16

# Tile Drawings– Laundry Room

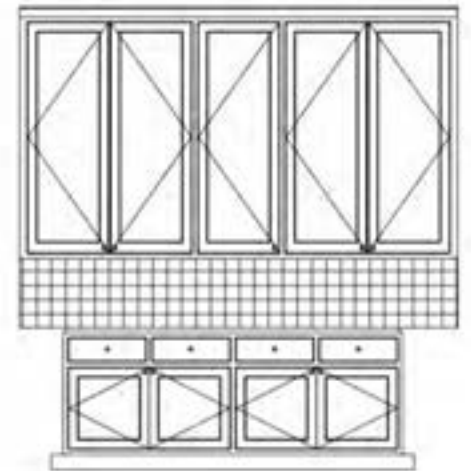
New Construction - Howard House Interiors



*PANTRY* *A1*



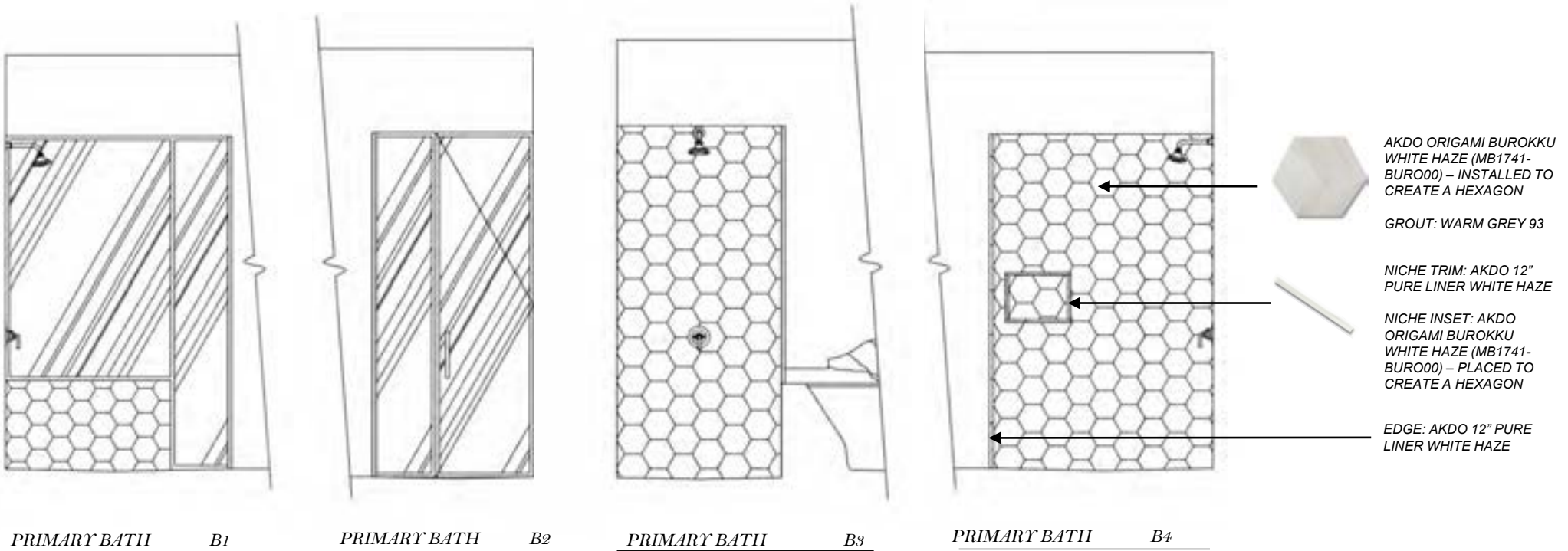
*PANTRY* *A2*



*PANTRY* *A3*

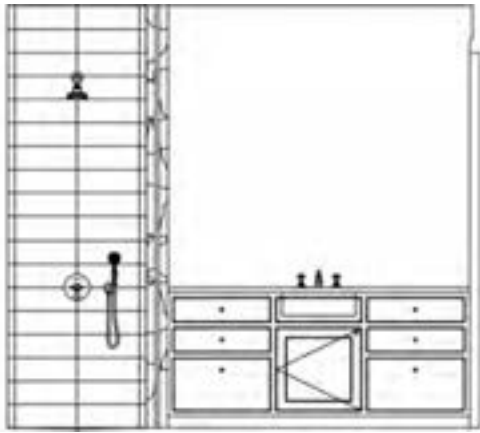
# Tile Drawings - Bathroom

New Construction - Howard House Interiors

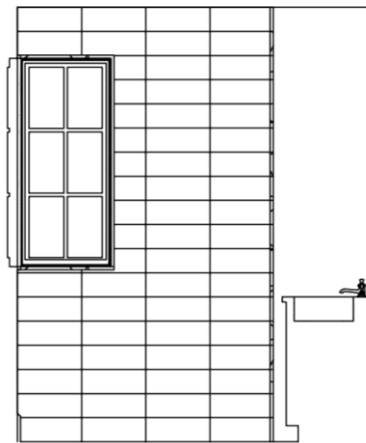


# Tile Drawings - Bathroom

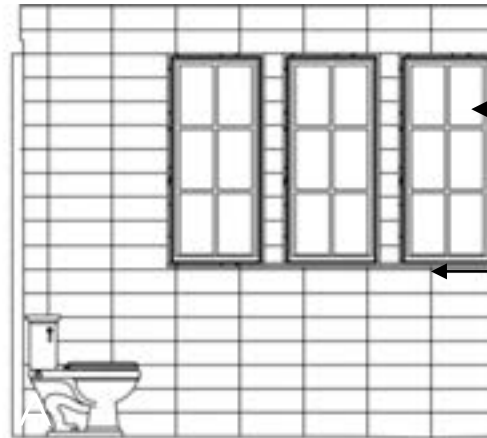
New Construction - Howard House Interiors



GUEST BATH C1



GUEST BATH C2



GUEST BATH C3

WM DOVER PLUS TONES  
WAVE MATTE WHITE 6X16  
TILE

GROUT: AVALANCHE 38

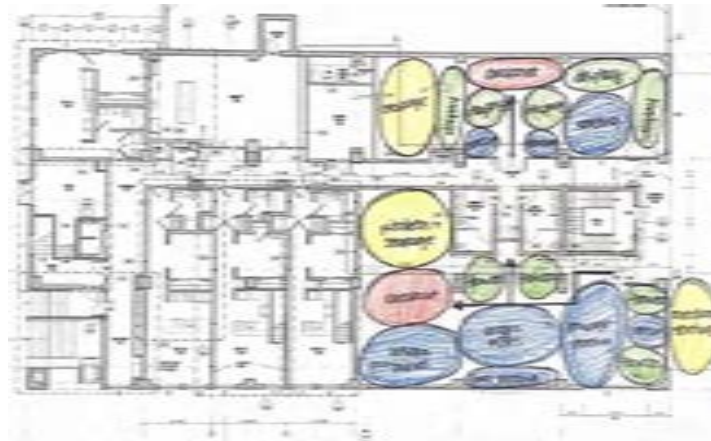
WM DOVER PLUS MATTE  
WHITE 1/2 X 12 FINISHING  
STRIP

# Demitasse

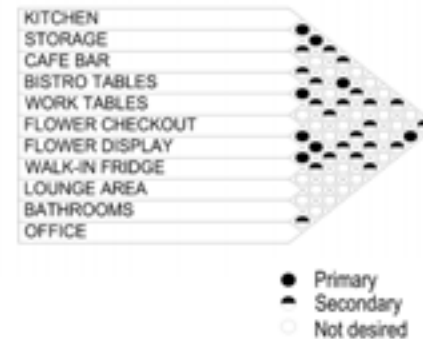
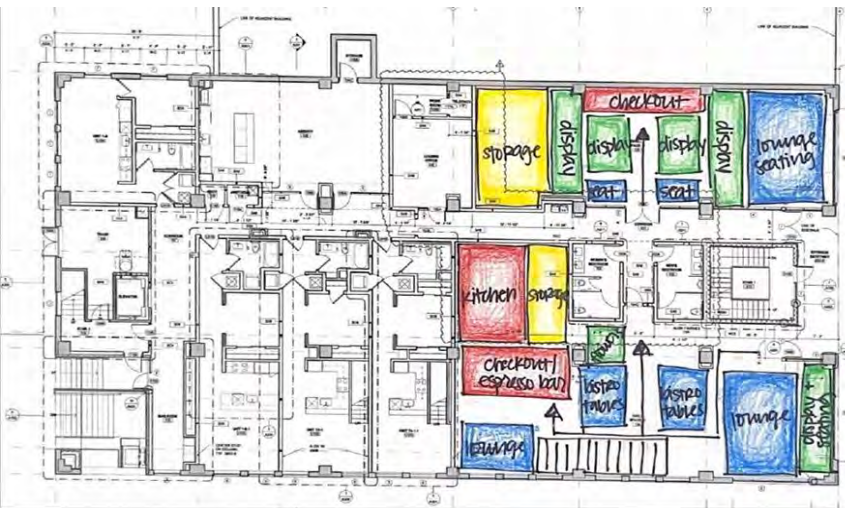
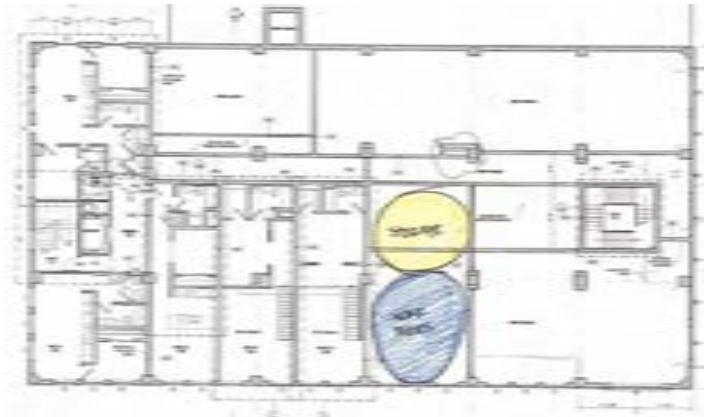
Commercial Design: Coffee Shop Renovation

Demitasse is a European-inspired coffee and flower shop. Demitasse is situated in a historic building in downtown Spartanburg, featuring massive windows and soaring ceilings. Intended to feel like you're transported back in time, Demitasse features vintage design details, such as antique-inspired light fixtures, Chesterfield sofas, and Parisian bistro tables and chairs. The traditional elements are perfectly contrasted with plenty of natural light and modern white walls. Although it is primarily open concept, the coffee shop and flower shop are in two separate spaces, but close enough to allow a seamless flow between the two spaces. In both the coffee shop and flower shop, a combination of lounge seating, small bistro tables and larger work tables allow a variety of activities, whether socializing, studying or working.

Bubble Diagram



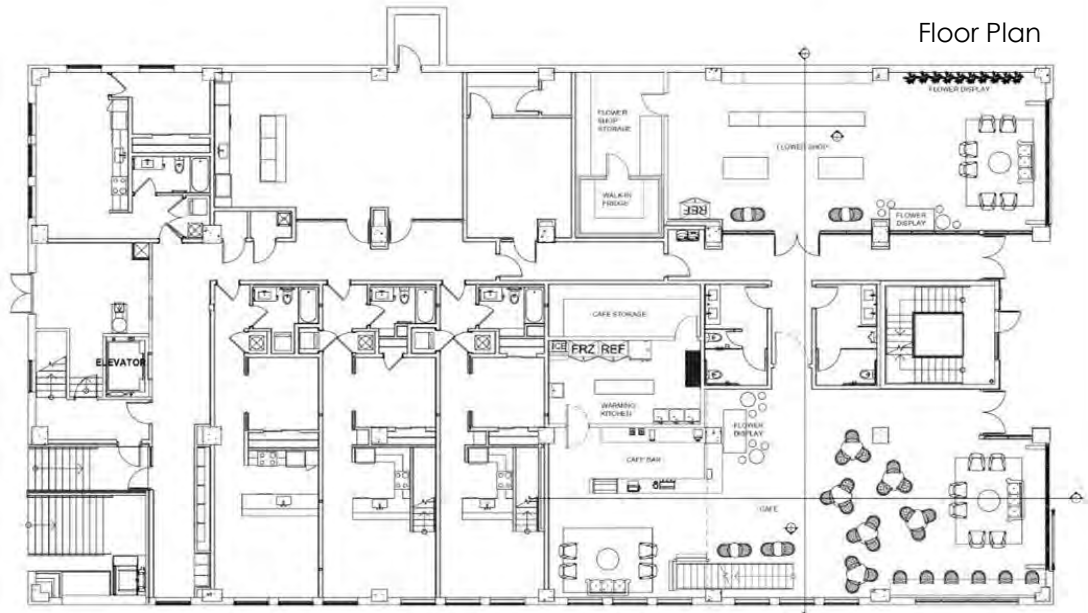
Blocking Diagram





# Demitasse

Commercial Design: Coffee Shop Renovation



Floor Plan

1st Floor Plan

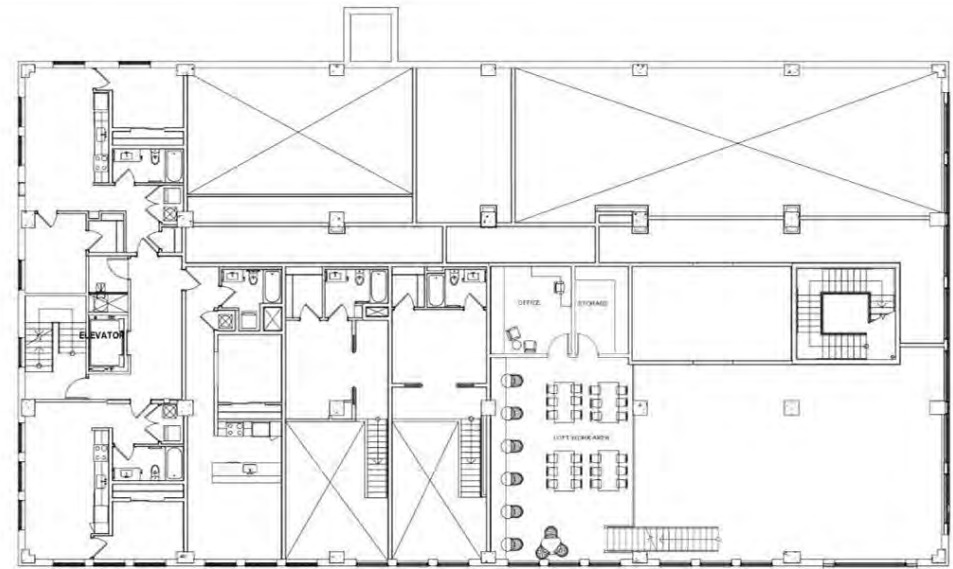
NTS 0 1 2 4 8



<b>Description</b>	Bistro Table
<b>Specification</b>	Aluminum, Marble
<b>Size</b>	Dia 24", 28" H
<b>Supplier</b>	World Market



<b>Description</b>	Parisian Bistro Chair
<b>Specification</b>	Aluminum, Wicker
<b>Size</b>	17"W, 21"D, 34"H
<b>Supplier</b>	Superior Seating

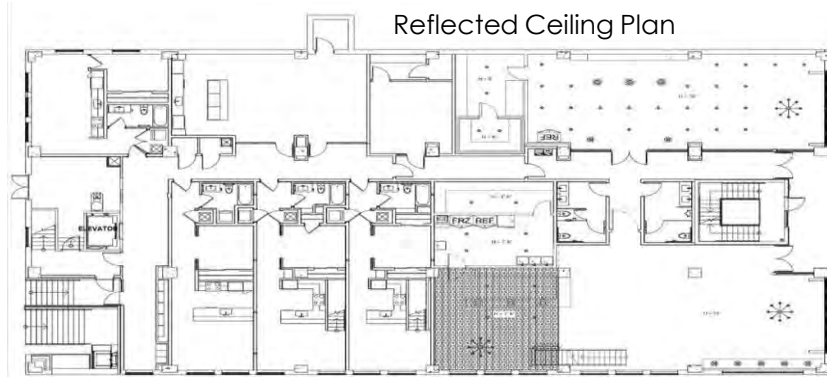


2nd Floor Plan

NTS 0 1 2 4 8

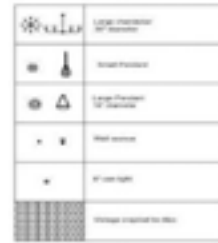
# Demitasse

Commercial Design: Coffee Shop Renovation

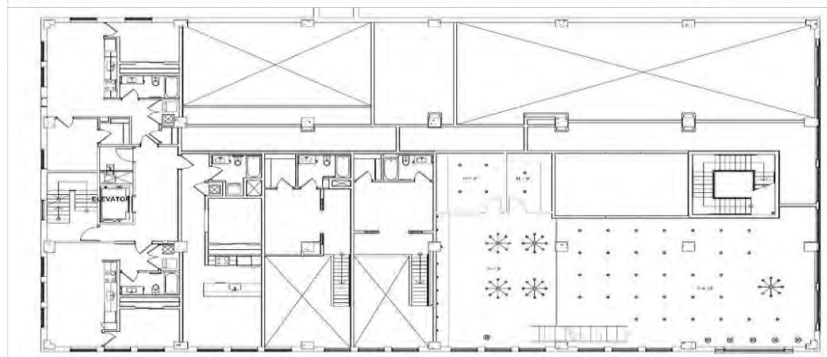


1st Floor Reflected Ceiling Plan

NTS 0 2 4 8



<b>Description</b>	Marble Fluted Chandelier
<b>Specification</b>	Marble, Brass
<b>Size</b>	Dia 18", 30.5" H
<b>Color</b>	Marble, Brass
<b>Supplier</b>	Circa Lighting



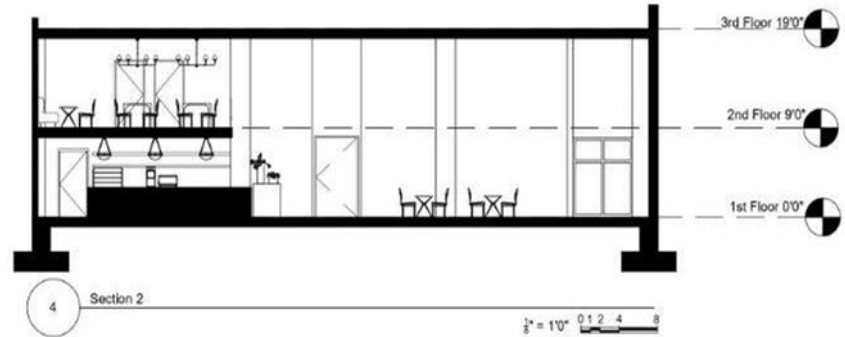
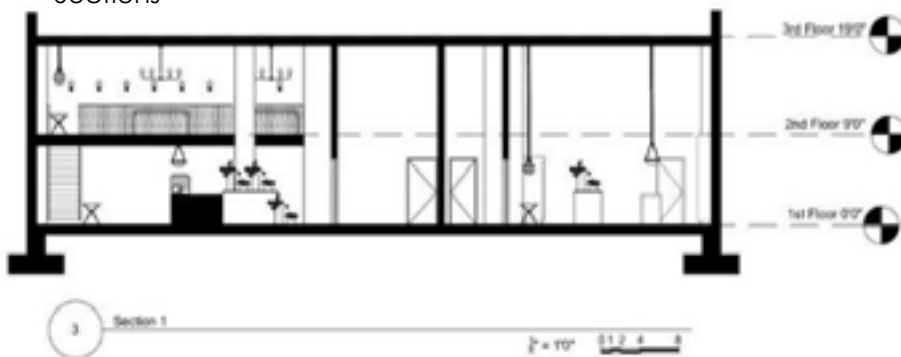
2nd Floor Reflected Ceiling Plan

NTS 0 2 4 8

<b>Description</b>	Piaf Grande Chandelier
<b>Specification</b>	Aged Iron, White Shades
<b>Size</b>	Dia 58"
<b>Color</b>	Iron, White
<b>Supplier</b>	Circa Lighting



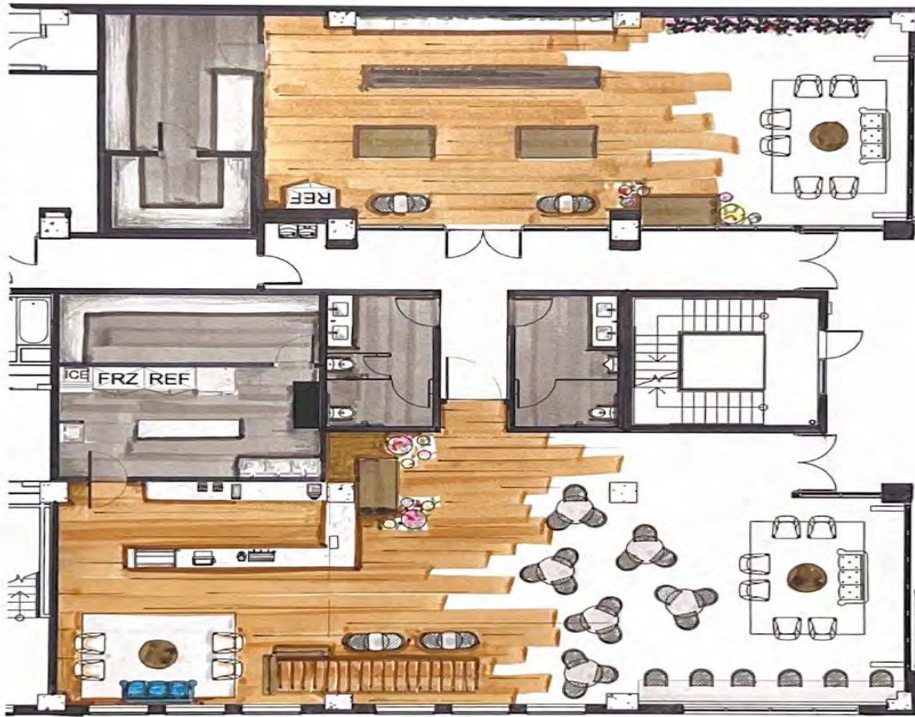
## Sections





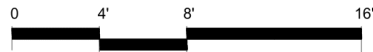
# Demitasse

Commercial Design: Coffee Shop Renovation



Demitasse Rendered First Floor

1/2" = 1'



Demitasse Rendered Second Floor

1/2" = 1'



Rendered Floor Plan (Medium: Marker)

# Demitasse

Commercial Design: Coffee Shop Renovation

SketchupPro Perspectives



Elevation 1 (Medium: Marker)



Elevation 2 (Medium: Marker)

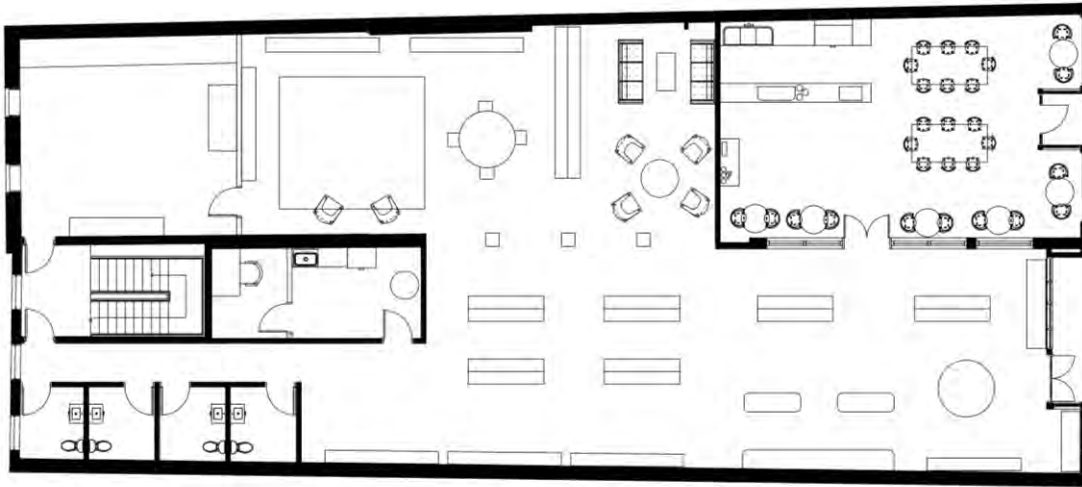


SketchupPro Perspectives



# Bookstore

Commercial Design: Historic Renovation



Bookstore Rendered Floor Plan

1/2" = 1'



<b>Item</b>	Hardwood Flooring
<b>Brand</b>	Natural Reflections
<b>Description</b>	Oak Walnut
<b>Dimensions</b>	5/16" thick



<b>Item</b>	Lounge Sofa
<b>Brand</b>	Coleman
<b>Description</b>	Emerald Green, Polyester
<b>Dimensions</b>	87"x37.5"x34"



Bookstore Rendered Floor Plan

1/2" = 1'

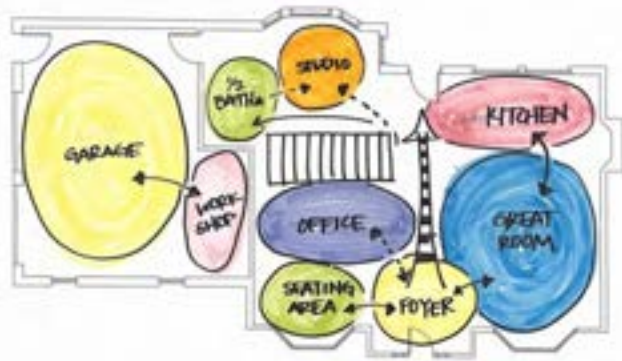




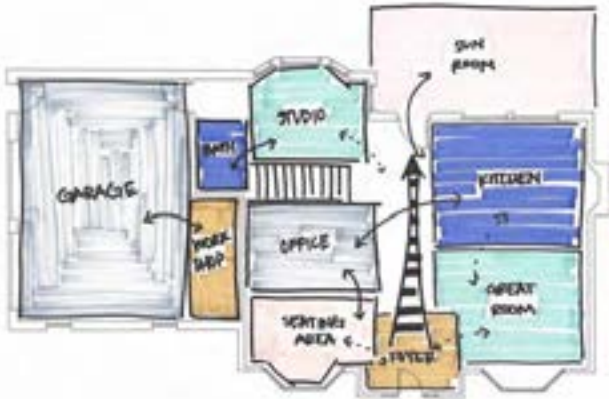
# Milhaven House

Residential Design – Revit

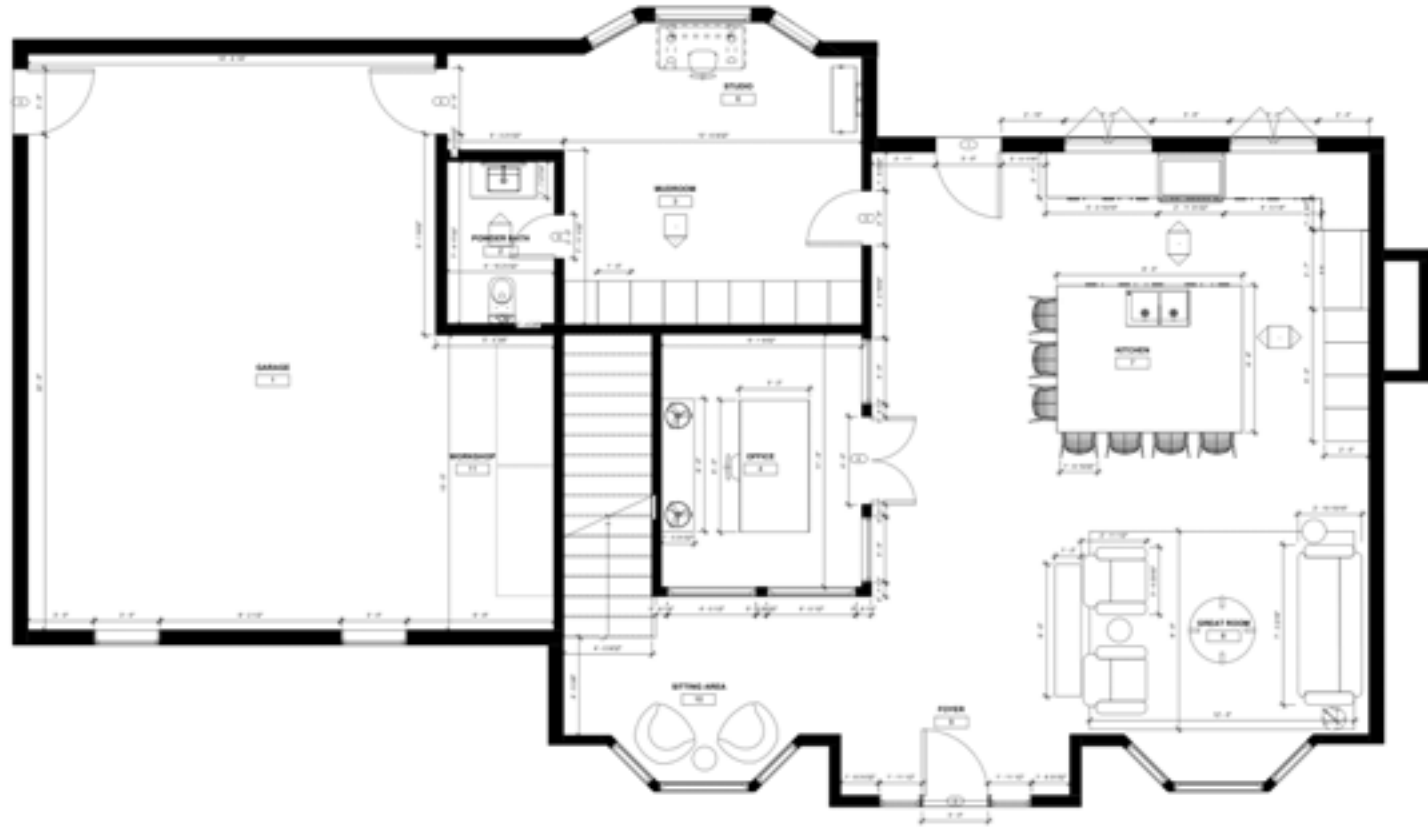
With a color palette of pinks, blues and greens, the Milhaven House will be cheerful and tasteful. I aim to reflect the personalities of the owners, who are patrons of the arts and have many grandchildren. The layout will foster a sense of community with an open floor plan and plenty of seating. By using durable materials, a playful color palette and a spacious layout, Milhaven House will be transformed into a multi-functional space that caters to many generations simultaneously.



Bubble Diagram



Blocking Diagram

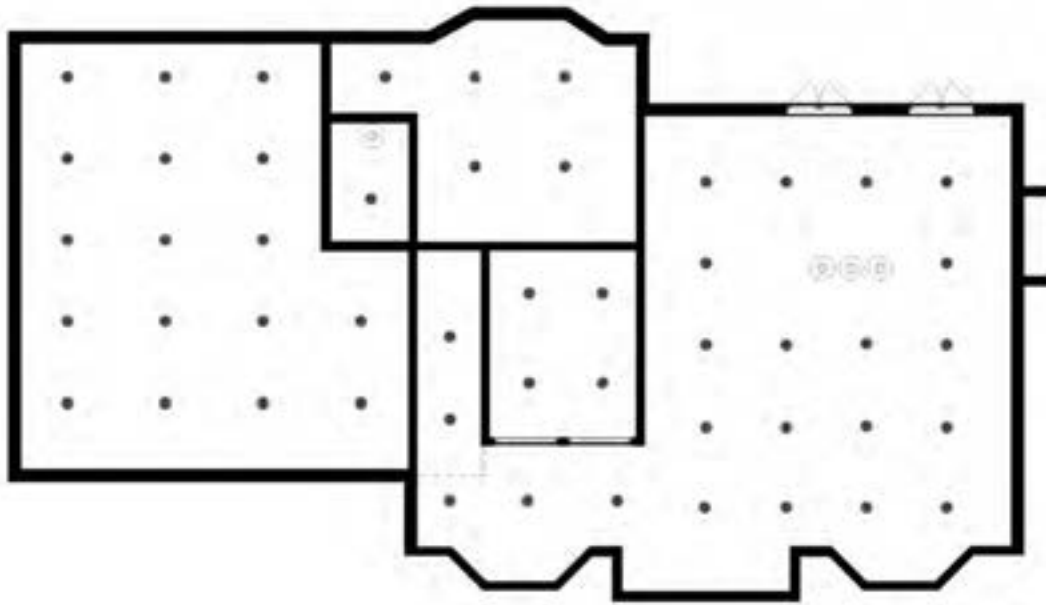


Milhaven House Floor Plan



# Milhaven House

Residential Design – Revit



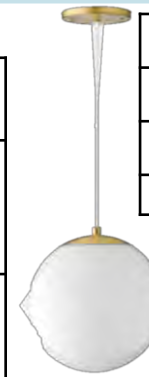
Milhaven House Reflected Ceiling Plan

1/2" = 1'



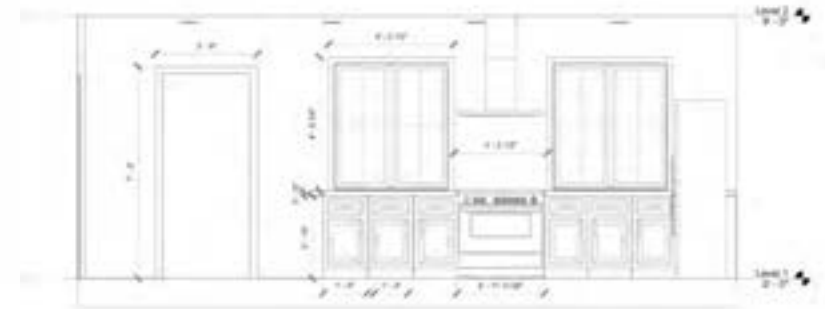
## LEGEND

SYMBOL	QTY	DESCRIPTION
●	50	6" standard recessed light
⊙	1	10" globe pendant, steel shade in PINK
⊙	3	10" pendant with milk glass globe shade



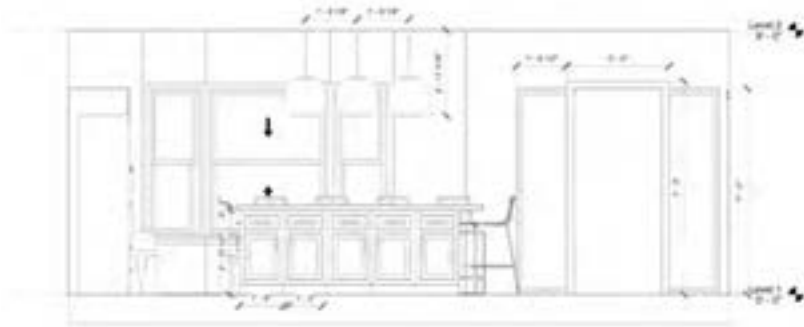
<b>Item</b>	Luna Cord Pendant
<b>Manufacturer</b>	Schoolhouse Electric
<b>Description</b>	Natural Brass, White
<b>Dimensions</b>	10"

<b>Item</b>	Schultz Pendant
<b>Manufacturer</b>	AllModern
<b>Description</b>	Pink shiny metal
<b>Dimensions</b>	10" diameter 72" length



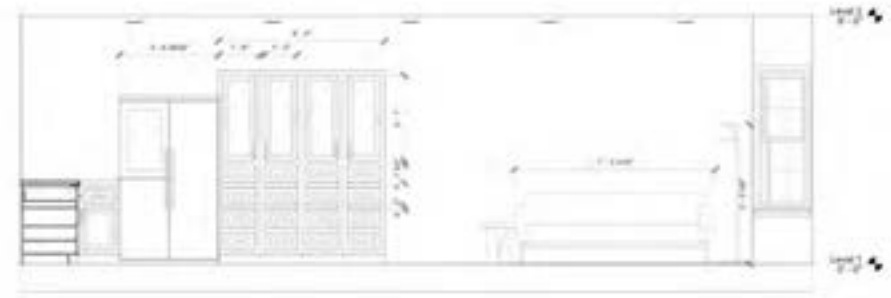
Kitchen Perimeter Elevation

1/2" = 1'



Kitchen Island Elevation

1/2" = 1'



Kitchen Perimeter Elevation

1/2" = 1'

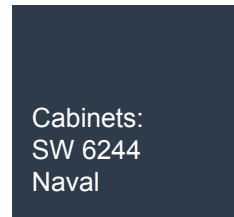


# Milhaven House

Residential Design – Revit



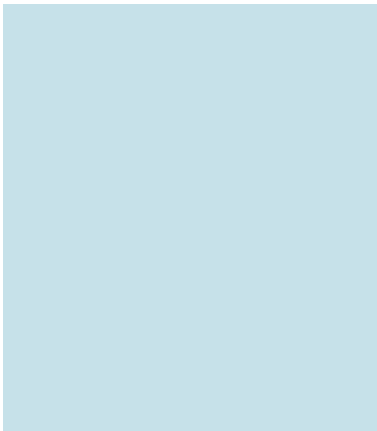
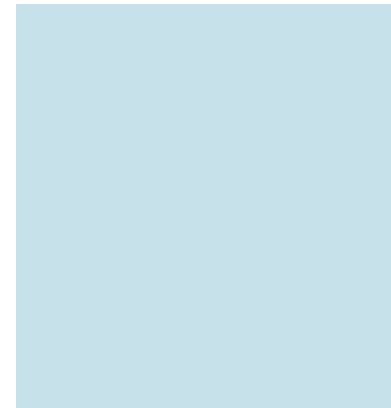
<b>Item</b>	Belfast Cabinet Pull
<b>Manufacturer</b>	Signature Hardware
<b>Description</b>	Satin Brass
<b>Dimensions</b>	6"





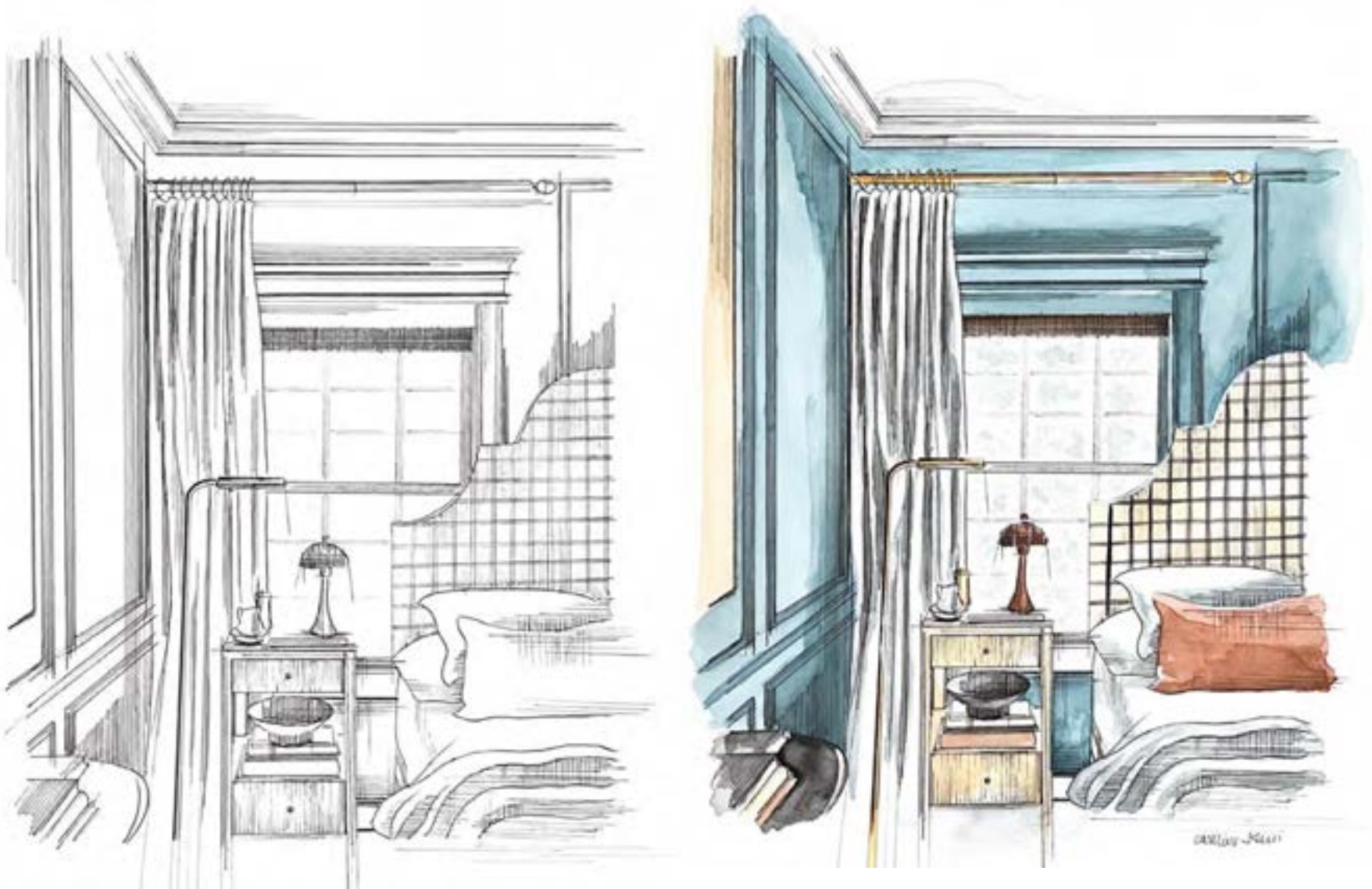
# Microhouse

Residential Design – SketchUp Pro



# Architectural Illustrations

Watercolor + Ink





# Architectural Illustrations

Watercolor + Ink



# Architectural Illustrations

Watercolor + Ink





# Architectural Illustrations

Watercolor + Ink

